



GEOPHYSICAL SERVICES, INC.  
ELECTRICAL LOG

62328-77-3

WELL: CEC OPERATIONAL  
 FIELD: CLAW LAKE NW 1/4  
 COUNTY: JAY STATE: CALIFORNIA  
 LOCATION: TL K Y C H 2

SEC: 6 TWP: 22S RGE: 39E

Formed Date: 9-25-77 Drilling Method: KB  
 Drilling Interval: 11 in Above Permanent Down Hole  
 Drilling Interval: 43.5 in Above Permanent Down Hole

Run No.: 1119  
 Operator: W. J. J.  
 Bit Size: 8 1/2  
 Bit Type: 2  
 Bit Material: 2  
 Bit Length: 11  
 Bit Weight: 11  
 Bit Grade: 2  
 Bit Type: 2  
 Bit Material: 2  
 Bit Length: 11  
 Bit Weight: 11  
 Bit Grade: 2  
 Bit Type: 2  
 Bit Material: 2  
 Bit Length: 11  
 Bit Weight: 11  
 Bit Grade: 2

Changes in Mud Type or Additional Samples

Date	Sample No.	Type Log	Depth	Scale Change	Scale Up Hole	Scale Down Hole

Depth: Driller \_\_\_\_\_  
 Type Fluid in Hole \_\_\_\_\_

Dens. \_\_\_\_\_  
 pH \_\_\_\_\_  
 Fluid Loss \_\_\_\_\_  
 Source of Sample \_\_\_\_\_

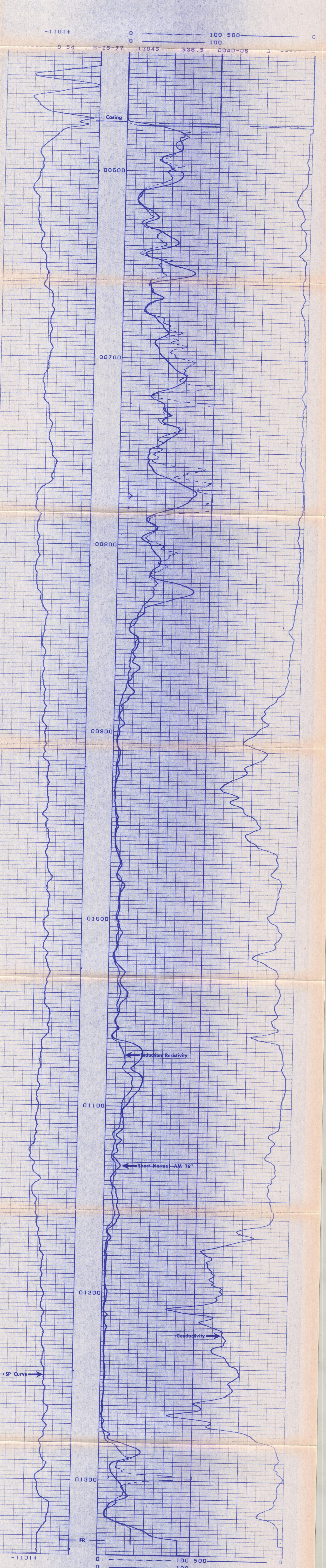
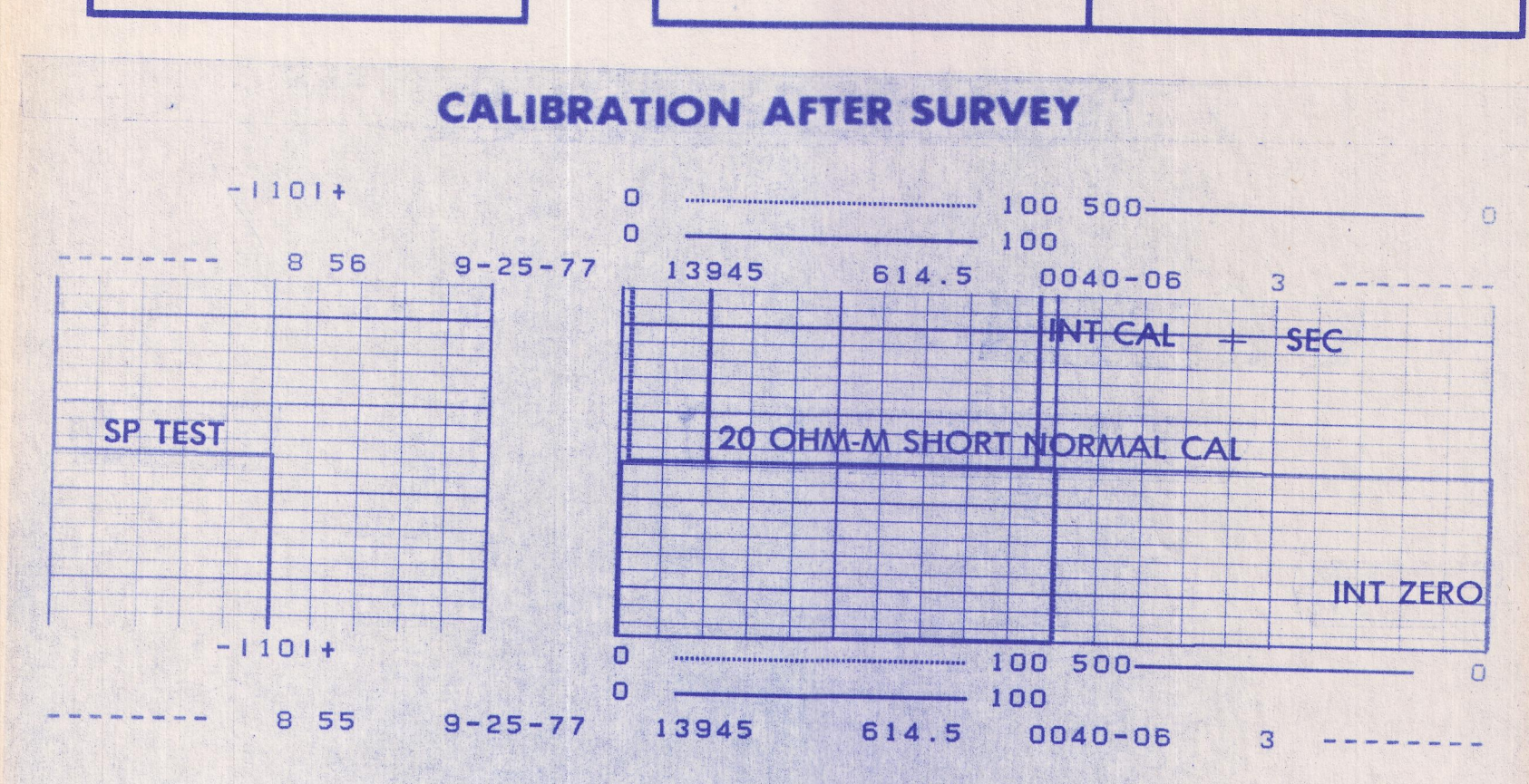
Run @	Mass. Temp.	Run @	Mass. Temp.	Run @	Mass. Temp.	Run @	Mass. Temp.	Run @	Mass. Temp.	Run @	Mass. Temp.	Run @	Mass. Temp.	Run @	Mass. Temp.	Run @	Mass. Temp.

SP Curve: M 25 119  
 Run @ BHT: 1119  
 Run @ BHT: 1119  
 Run @ BHT: 1119  
 Run @ BHT: 1119

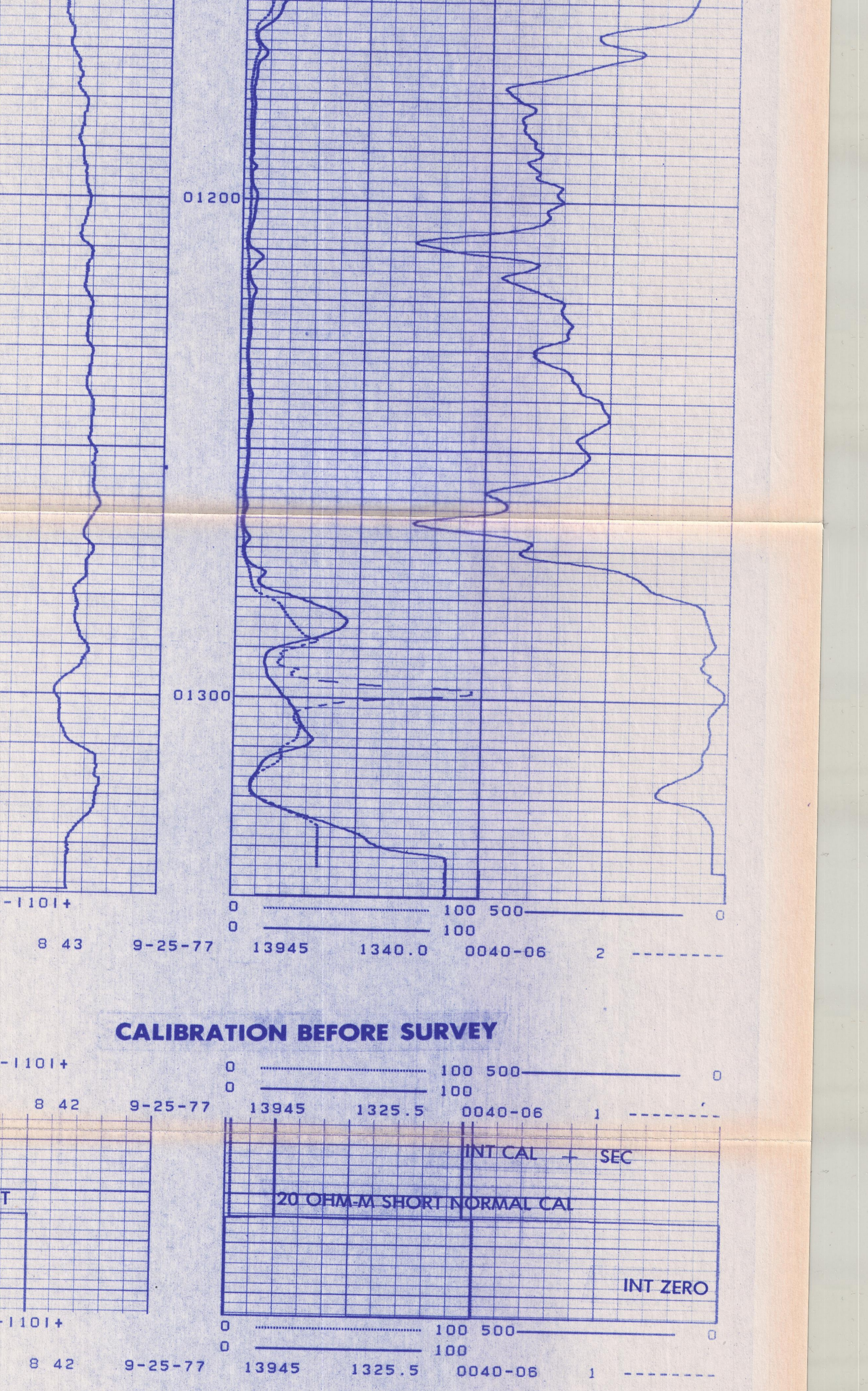
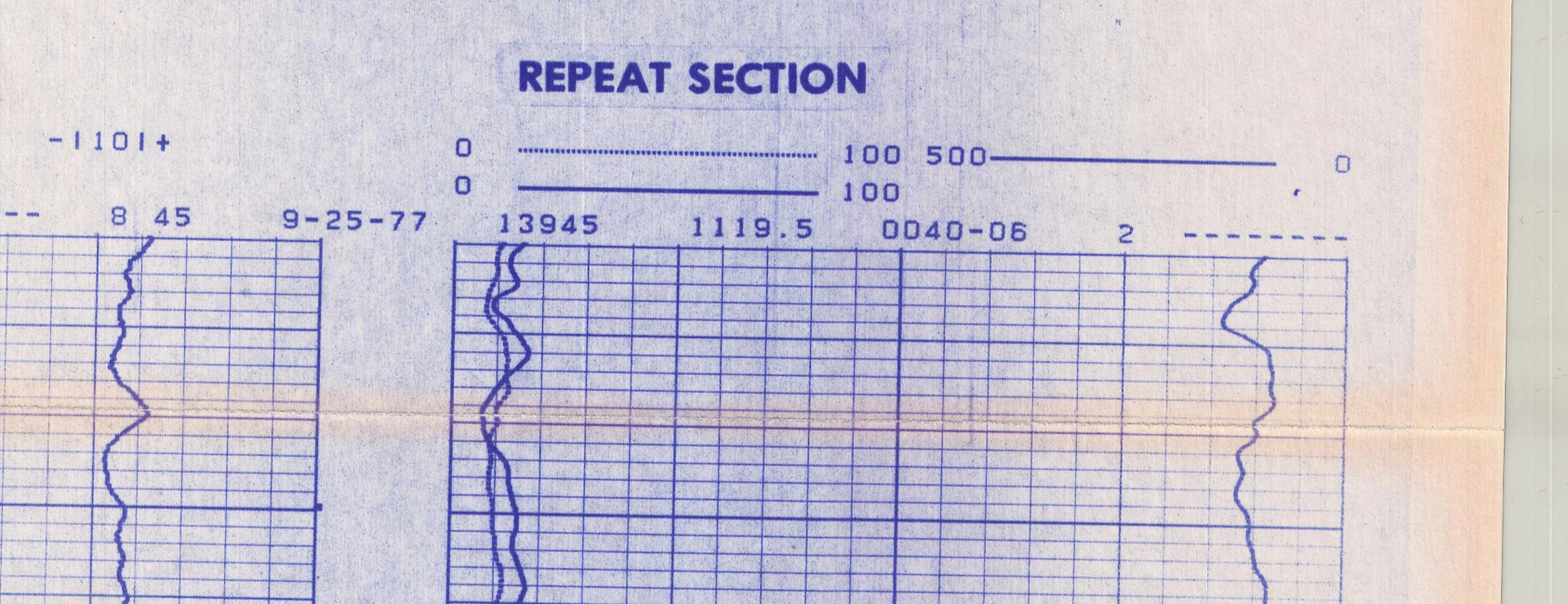
Remarks: \_\_\_\_\_

SPONTANEOUS POTENTIAL	DEPTH	RESISTIVITY	CONDUCTIVITY
millivolts		ohms · m <sup>2</sup> /m	1000 millimhos/m = ohms · m <sup>2</sup> /m
		10" NORMAL AMP. NORMAL	40" INDUCTION
		0	0
		0	0
		0	0
		0	0

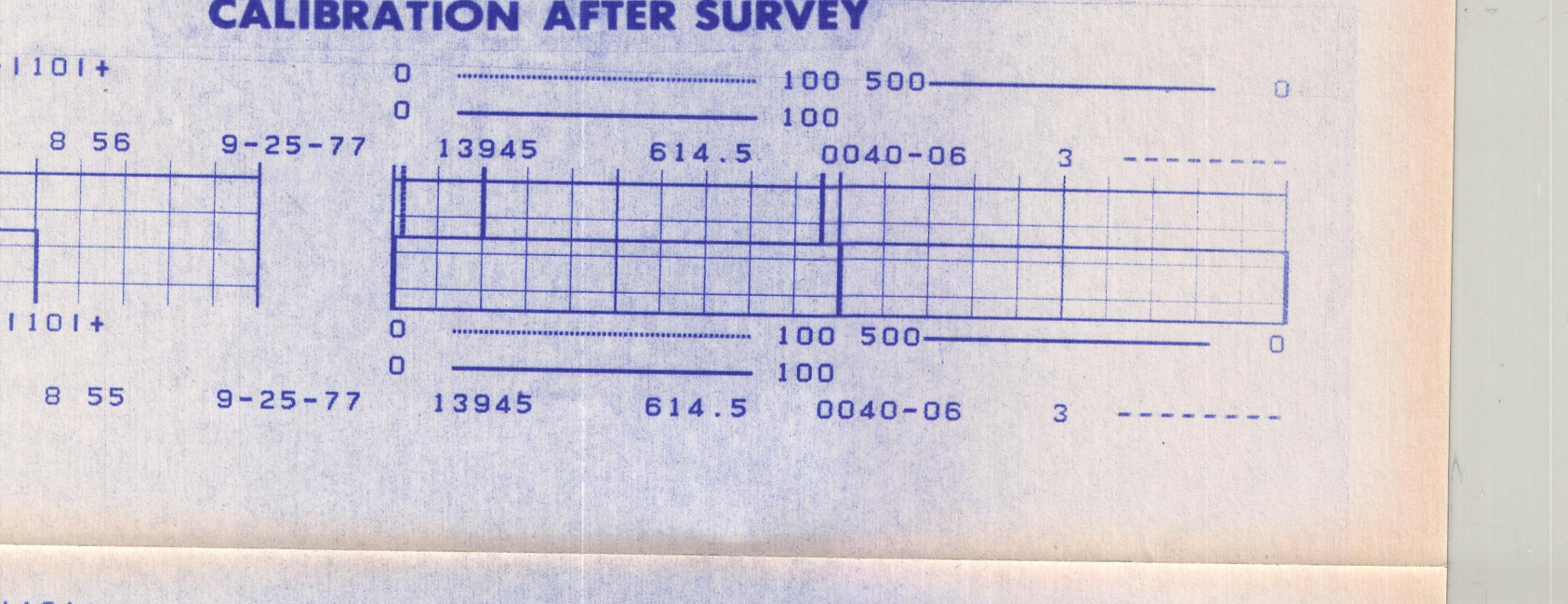
### CALIBRATION AFTER SURVEY



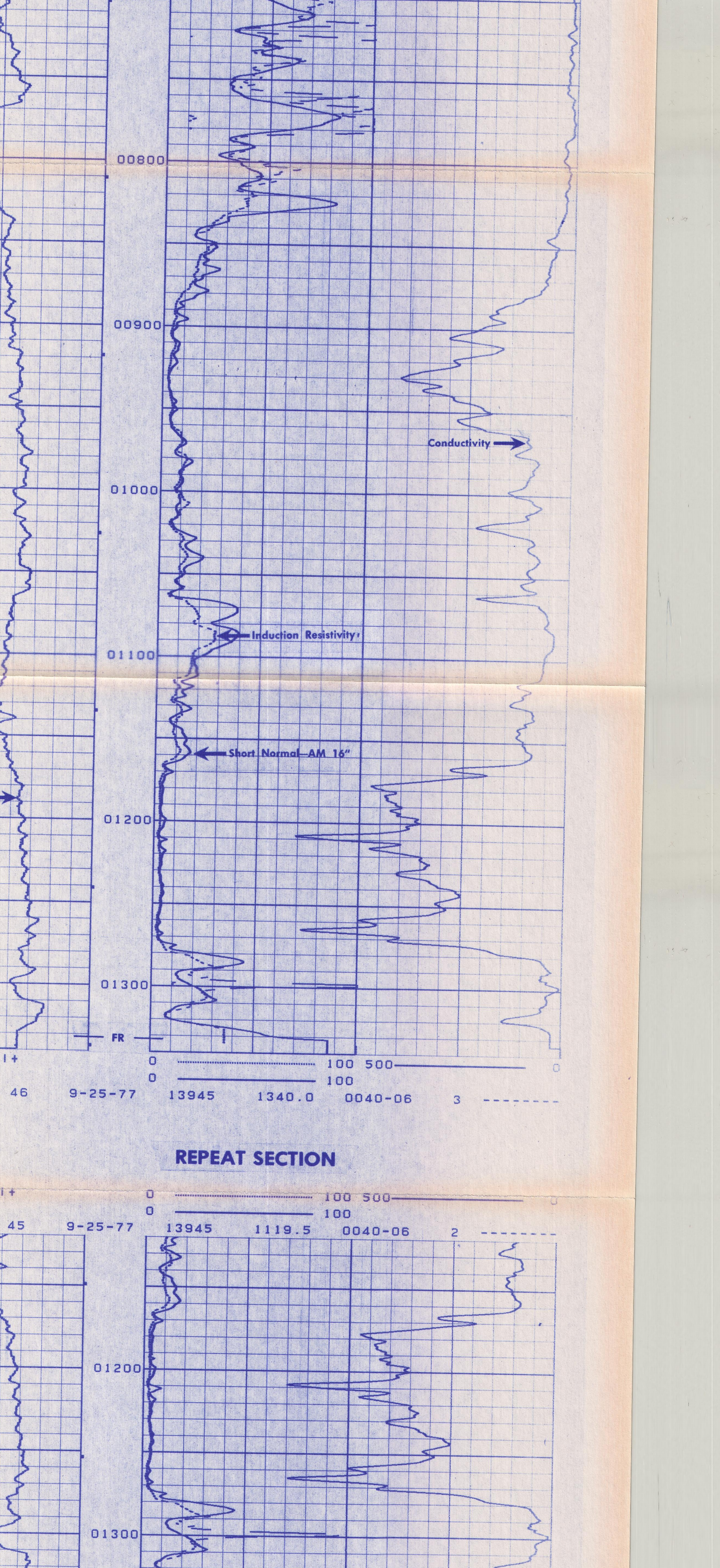
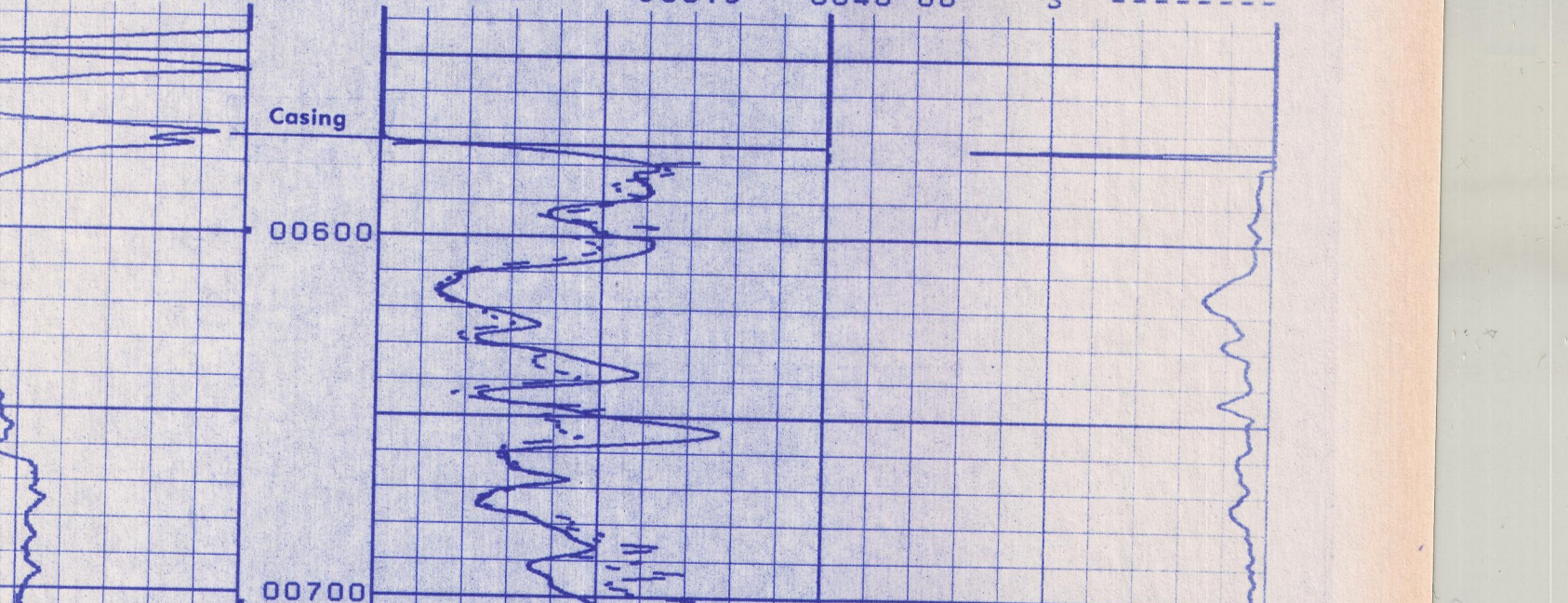
### REPEAT SECTION



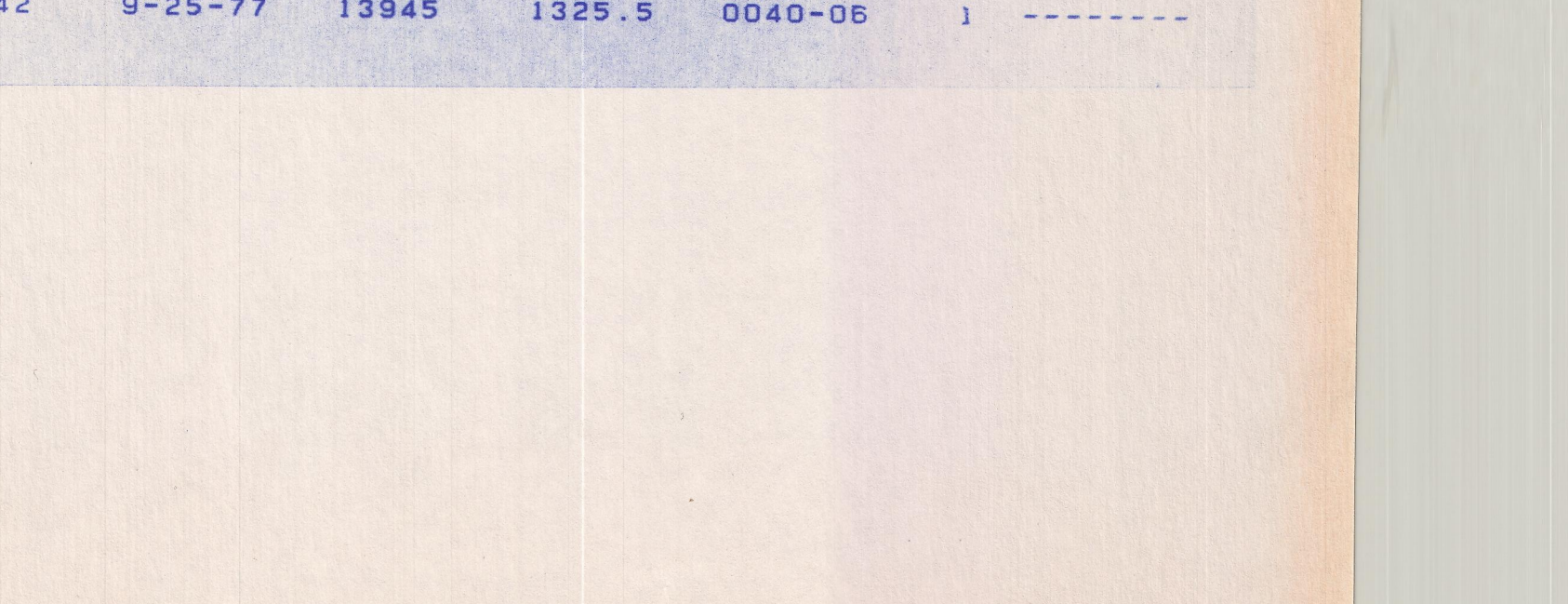
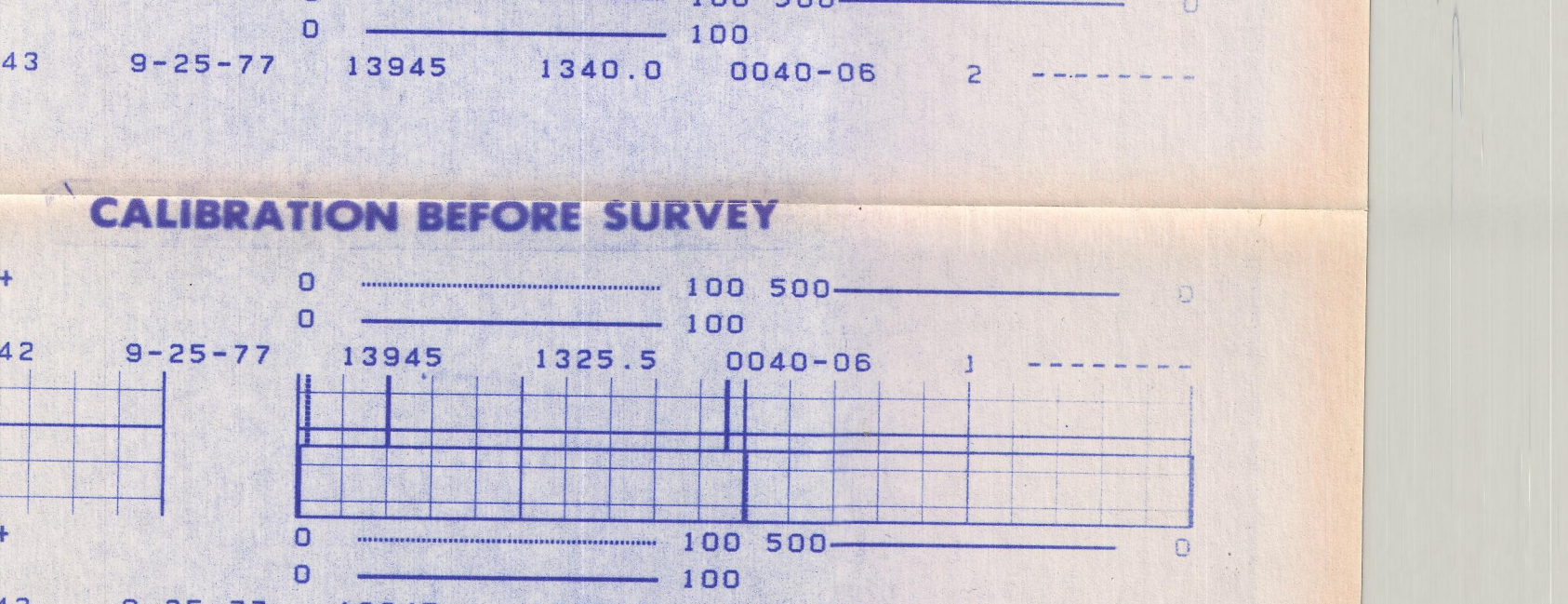
### CALIBRATION BEFORE SURVEY



### CALIBRATION AFTER SURVEY



### REPEAT SECTION



### CALIBRATION BEFORE SURVEY

