

FLUING NO. \_\_\_\_\_ COMPANY CER CORPORATION/ERDA

WELL CGEH #1 STATE CALIFORNIA

FIELD CHINA LAKE N.W.C.

COUNTY INYO

Location: \_\_\_\_\_

Sec. 6 Twp. 22S Rm. 39E

Permanent Datum: G.L. Elev. 4358.5 I.E.L. 0

Log Measured From: G.L. Elev. 4358.5 TEMP. LOG

Drilling Measured From: K.B. Elev. 4379 X-Y CALIPER

DATE 10-3-77 D.F. 4358.5 GAMMA-RAY

Run No. ONE

Depth - Driller 1678

Bottom Logged Interval 1678 - 1678

Type Fluid in Hole GEL-LIGNITE

Density 67 Visc. 45

Ph. 205 Fluid Loss 4

Max. rec. temp., deg. F. FLOMLINE

Source of Samples 2.5 @ 40'

Run @ Mass. Temp. 2.7 @ 90'

Print @ Mass. Temp. 4.5 @ 4'

Sp. Grav. 1.0

Sp. Grav. @ 1000 F. 1.0

Sp. Grav. at Bottom 0858

Recorded By WALKER/VILLA

Witnessed By M.R. FOEHR

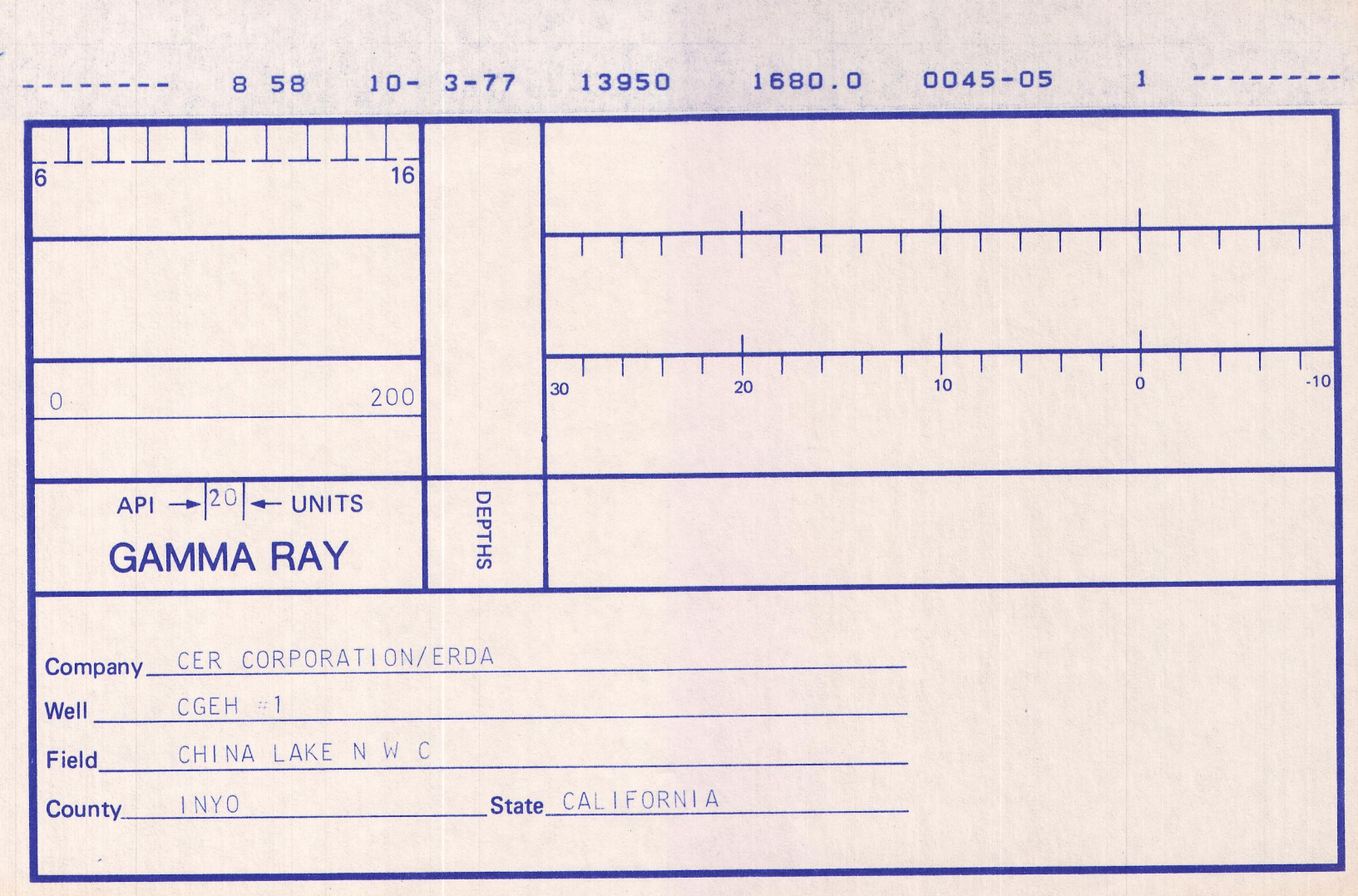
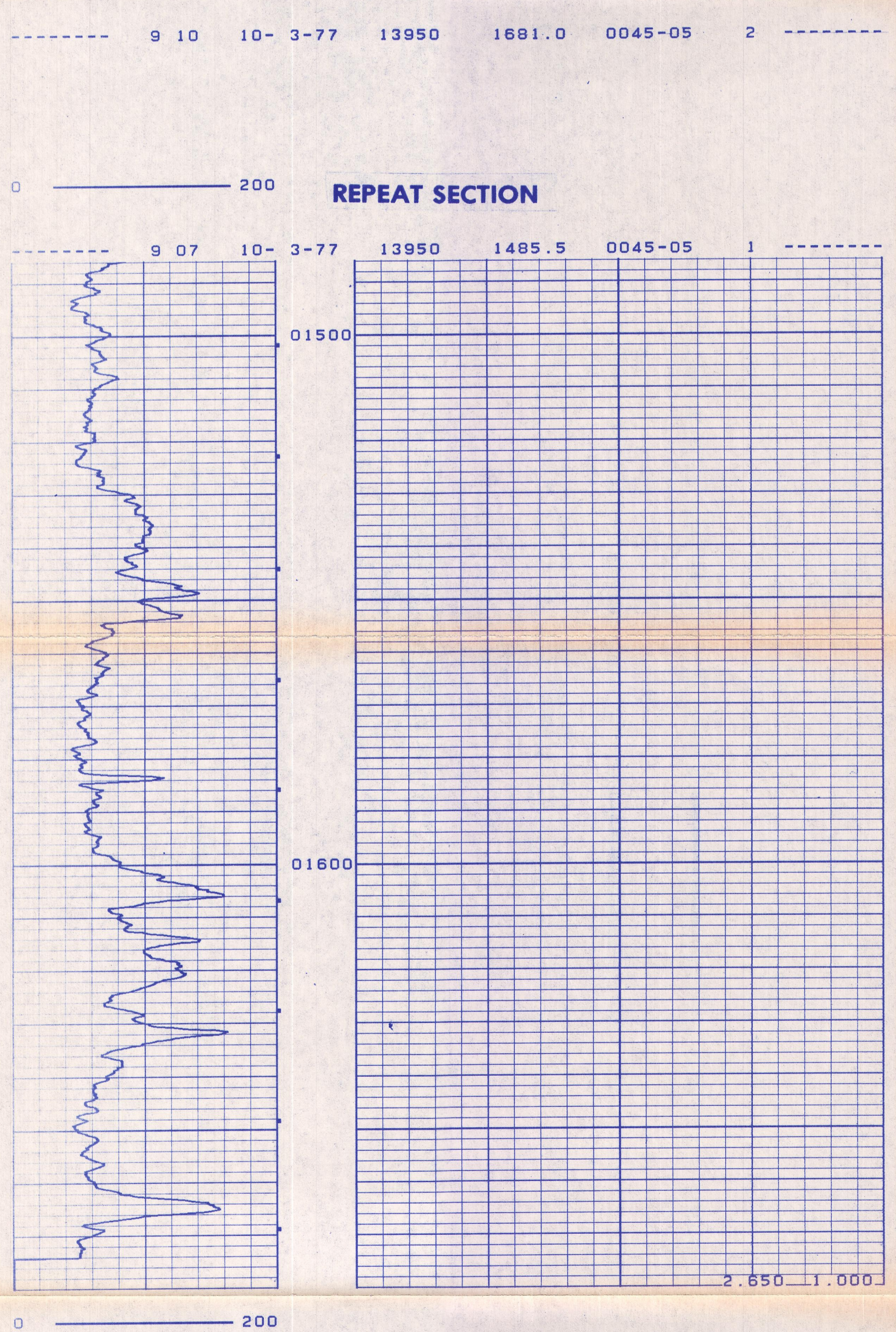
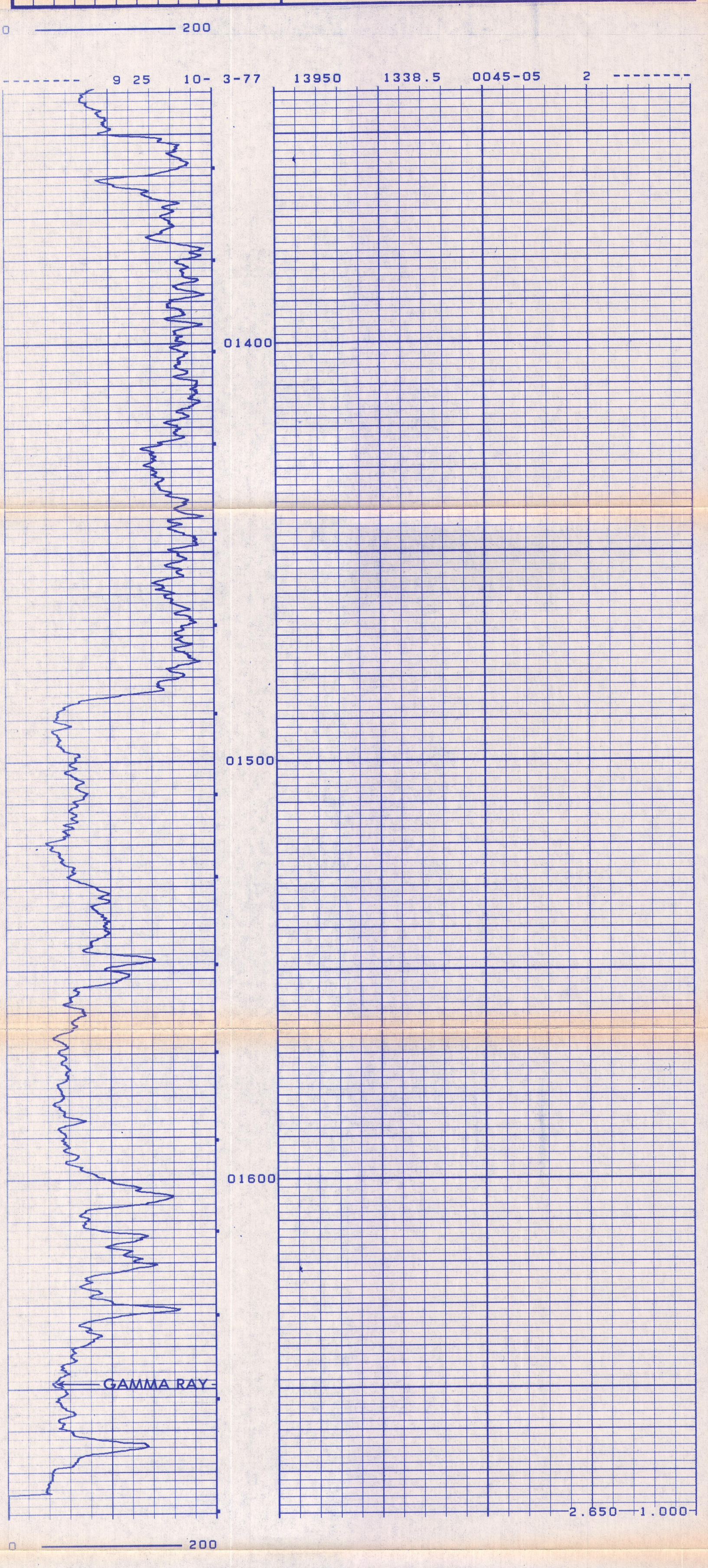
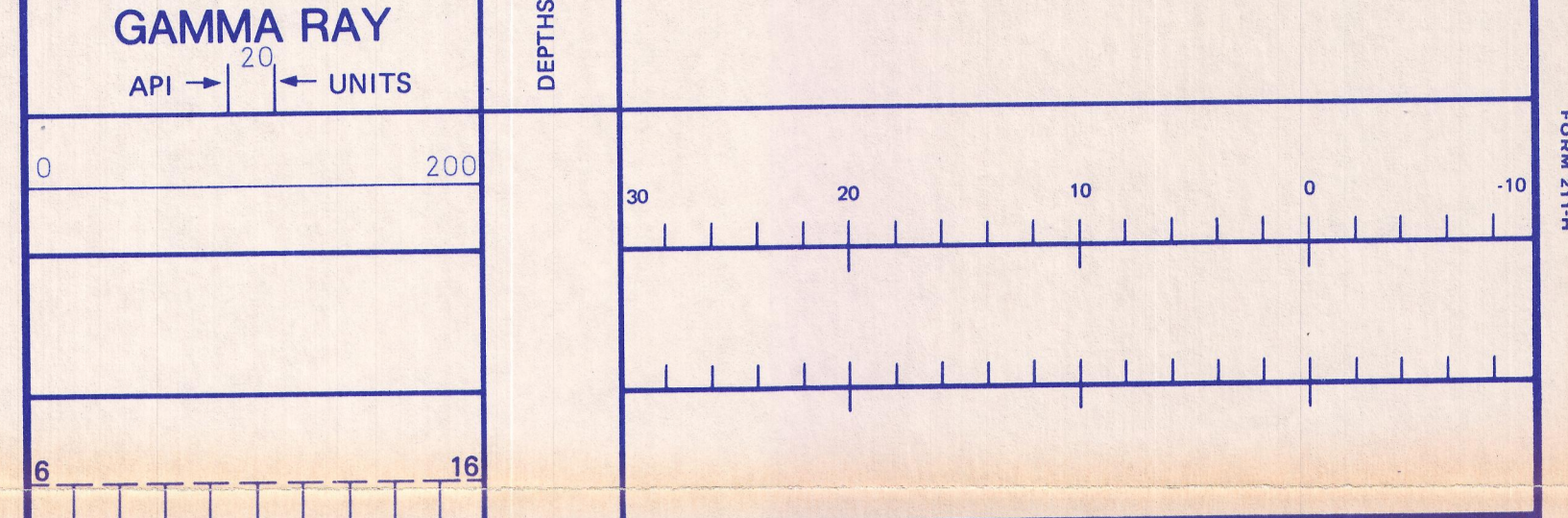
Run No. 8 BIT 3/1 Bore Hole Record From 600 To 1368 Size 9 5/8 WTL. From 600 To 1368

EQUIPMENT DATA				CALIBRATION DATA					
Run No.	Tool No.	Source No.	Logging Unit	GAMMA RAY			SIDEWALL NEUTRON		
				API Scale	BKG. CPS.	CAL. CPS.	CAL. Scale	BKG. CPS.	CAL. CPS.

LOGGING DATA														
RUN NO.	GENERAL		GAMMA-RAY				SIDEWALL NEUTRON SELECTORS							
	DEPTHS	Speed Ft/Min.	T.C.	Sens. Setting	Zero Div. L	API GR Units Per Log Div.	T.C.	Por. Scale	Matrix Type	Temp. Grad.	Salinity NACL PPM	Mud Wt. Lb/Gal	Surf Temp.	Hole Size
From	To													

REMARKS



Company CER CORPORATION/ERDA

Well CGEH #1

Field CHINA LAKE N.W.C.

County INYO State CALIFORNIA