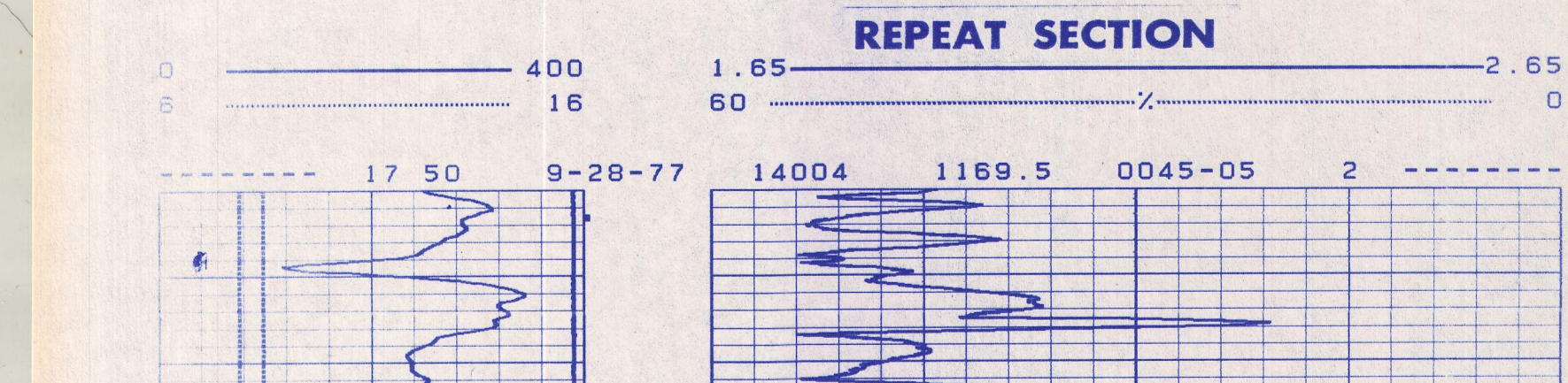
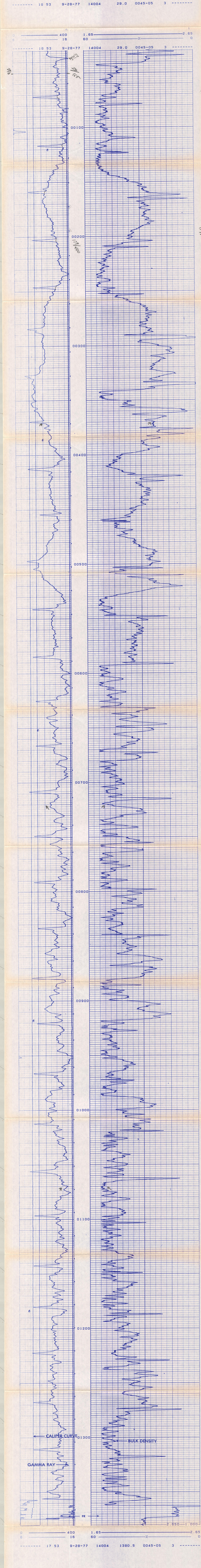
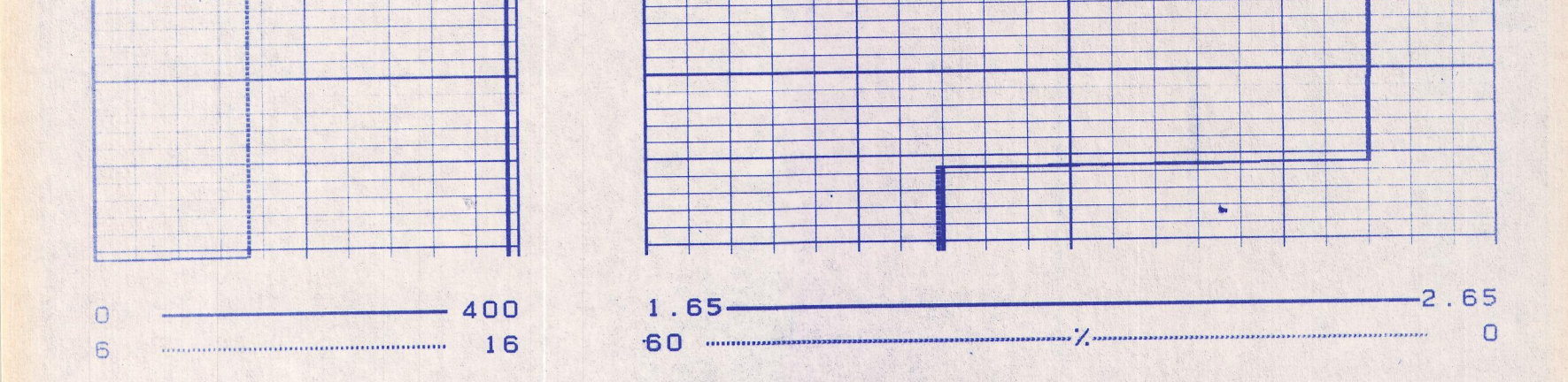


FINISH NO. _____ COMPANY CER CORPORATION/REDA	
WELL OGBH #1 FIELD CHINA LAKE WNG	
COUNTY INYO STATE CALIFORNIA	
Date 9-28-77 Time 2:25 P.M.	Run Log 1374 1375 1376 1377 1378 1379 1380 1381 1382 1383 1384 1385 1386 1387 1388 1389 1390 1391 1392 1393 1394 1395 1396 1397 1398 1399 1400 1401 1402 1403 1404 1405 1406 1407 1408 1409 1410 1411 1412 1413 1414 1415 1416 1417 1418 1419 1420 1421 1422 1423 1424 1425 1426 1427 1428 1429 1430 1431 1432 1433 1434 1435 1436 1437 1438 1439 1440 1441 1442 1443 1444 1445 1446 1447 1448 1449 1450 1451 1452 1453 1454 1455 1456 1457 1458 1459 1460 1461 1462 1463 1464 1465 1466 1467 1468 1469 1470 1471 1472 1473 1474 1475 1476 1477 1478 1479 1480 1481 1482 1483 1484 1485 1486 1487 1488 1489 1490 1491 1492 1493 1494 1495 1496 1497 1498 1499 1500
Location _____ Other Services _____ Instrumentation _____ Logging Method _____ Date _____ Time _____	

Run No. 0012 Tool No. 2135 Source No. A 3979 Panel No. 001		Equipment Data Logging Unit 7514 Location BAK REEF #140	
Run No. 0012 API Scale 120 Gamma Ray Background CPS 0		Calibration Data Std. CPS 400 D.C. CPS AT ALUMINUM 90 D.C. CPS AT MAGNESIUM 92	
Run No. 0012 From 90 To 1274 Speed #/Min 60		Logging Data GR 16 TC 5.0	

<table border="1" style="width: 100%;"> <tr> <td style="text-align: center;">GAMMA RAY API UNITS</td> <td style="text-align: center;">DEPTHS</td> </tr> <tr> <td style="text-align: center;">0</td> <td style="text-align: center;">400</td> </tr> </table>	GAMMA RAY API UNITS	DEPTHS	0	400	<table border="1" style="width: 100%;"> <tr> <td style="text-align: center;">BULK DENSITY GRAMS/CC</td> <td style="text-align: center;">POROSITY-%</td> </tr> <tr> <td style="text-align: center;">60</td> <td style="text-align: center;">15</td> </tr> </table>	BULK DENSITY GRAMS/CC	POROSITY-%	60	15
GAMMA RAY API UNITS	DEPTHS								
0	400								
BULK DENSITY GRAMS/CC	POROSITY-%								
60	15								
CALIPER	HOLE SIZE - INCHES								
6	16								



<table border="1" style="width: 100%;"> <tr> <td style="text-align: center;">HOLE SIZE - INCHES</td> <td style="text-align: center;">DEPTHS</td> </tr> <tr> <td style="text-align: center;">CALIPER</td> <td style="text-align: center;">BULK DENSITY GRAMS/CC</td> </tr> <tr> <td style="text-align: center;">6</td> <td style="text-align: center;">400</td> </tr> </table>	HOLE SIZE - INCHES	DEPTHS	CALIPER	BULK DENSITY GRAMS/CC	6	400	<table border="1" style="width: 100%;"> <tr> <td style="text-align: center;">GAMMA RAY API UNITS</td> <td style="text-align: center;">POROSITY-%</td> </tr> <tr> <td style="text-align: center;">0</td> <td style="text-align: center;">15</td> </tr> </table>	GAMMA RAY API UNITS	POROSITY-%	0	15
HOLE SIZE - INCHES	DEPTHS										
CALIPER	BULK DENSITY GRAMS/CC										
6	400										
GAMMA RAY API UNITS	POROSITY-%										
0	15										
Company CER CORPORATION Well OGBH #1 Field CHINA LAKE WNG County INYO State CALIFORNIA											
GO FR 1372 GO TO 1374 DRG TO 1382 Elev 4779 OF 4358.5 GL											