
 Project name: ALAMOSA AREA, COLORADO
 GRAVITY SURVEY
 Model: 3-D GRAVITY MODEL

Units in Feet

MAGNETIC PARAMETERS

Earth's field: 0. gammas.
 Inclination = 0. degrees Declination = 0. degrees.

| PRISM | X1 | X2 | Y1 | Y2 | D1 | D2 | DC | SC |
|-------|---------|---------|---------|---------|--------|--------|-------|-------------|
| ----- | --- | --- | --- | --- | --- | --- | --- | --- |
| 1 | -85000. | 100000. | -85000. | 265000. | 0. | 20000. | -0.83 | 1.9 0. |
| 2 | -21120. | -2640. | 10560. | 27984. | 5000. | 5200. | 0.83 | 2.73 0. |
| 3 | -12144. | -7392. | 20000. | 25000. | 4900. | 5200. | 0.83 | 0. |
| 4 | 15840. | 24816. | 10000. | 15840. | 4500. | 5200. | 0.83 | 0. |
| 5 | 8448. | 21120. | 29568. | 32736. | 4750. | 5200. | 0.83 | 0. |
| 6 | 21120. | 24816. | 15840. | 40000. | 5000. | 5200. | 0.83 | 0. |
| 7 | 18480. | 31680. | -18480. | -7392. | 5400. | 5600. | 0.83 | 0. |
| 8 | -13728. | -2640. | -18480. | -5280. | 5300. | 5600. | 0.83 | 0. |
| 9 | -26400. | 52800. | -85000. | -18480. | 5000. | 20000. | 0.83 | 0. |
| 10 | -2640. | 8448. | -10560. | 6500. | 5600. | 7000. | -0.45 | val 2.28 0. |
| 11 | 8448. | 18480. | -10560. | 2112. | 5600. | 6500. | -0.45 | val 2.28 0. |
| 12 | 31680. | 52800. | -18480. | 265000. | 7000. | 20000. | 0.83 | 0. |
| 13 | -26400. | 31680. | -18480. | 47520. | 5600. | 20000. | 0.83 | 0. |
| 14 | -85000. | -26400. | -85000. | 265000. | 5600. | 8000. | 0.63 | 2.53 0. |
| 15 | -26400. | 31680. | 47520. | 265000. | 5400. | 20000. | 0.83 | 0. |
| 16 | -2640. | 8448. | 6500. | 47520. | 5600. | 6200. | -0.45 | val 0. |
| 17 | -85000. | -26400. | -85000. | 265000. | 8000. | 10000. | 0.35 | 2.25 0. |
| 18 | 75000. | 100000. | -85000. | 265000. | 12500. | 20000. | 0.83 | 0. |
| 19 | 52800. | 75000. | -85000. | 265000. | 10000. | 20000. | 0.83 | 0. |
| 20 | -85000. | -26400. | -85000. | 265000. | 10000. | 20000. | 0.83 | 0. |
| 21 | -26400. | -2640. | 6500. | 40000. | 5200. | 5600. | 0.83 | 0. |

22 8448. 31680. 6500. 40000. 5200. 5600. 0.83 0.

GRID PARAMETERS

Gravity Model

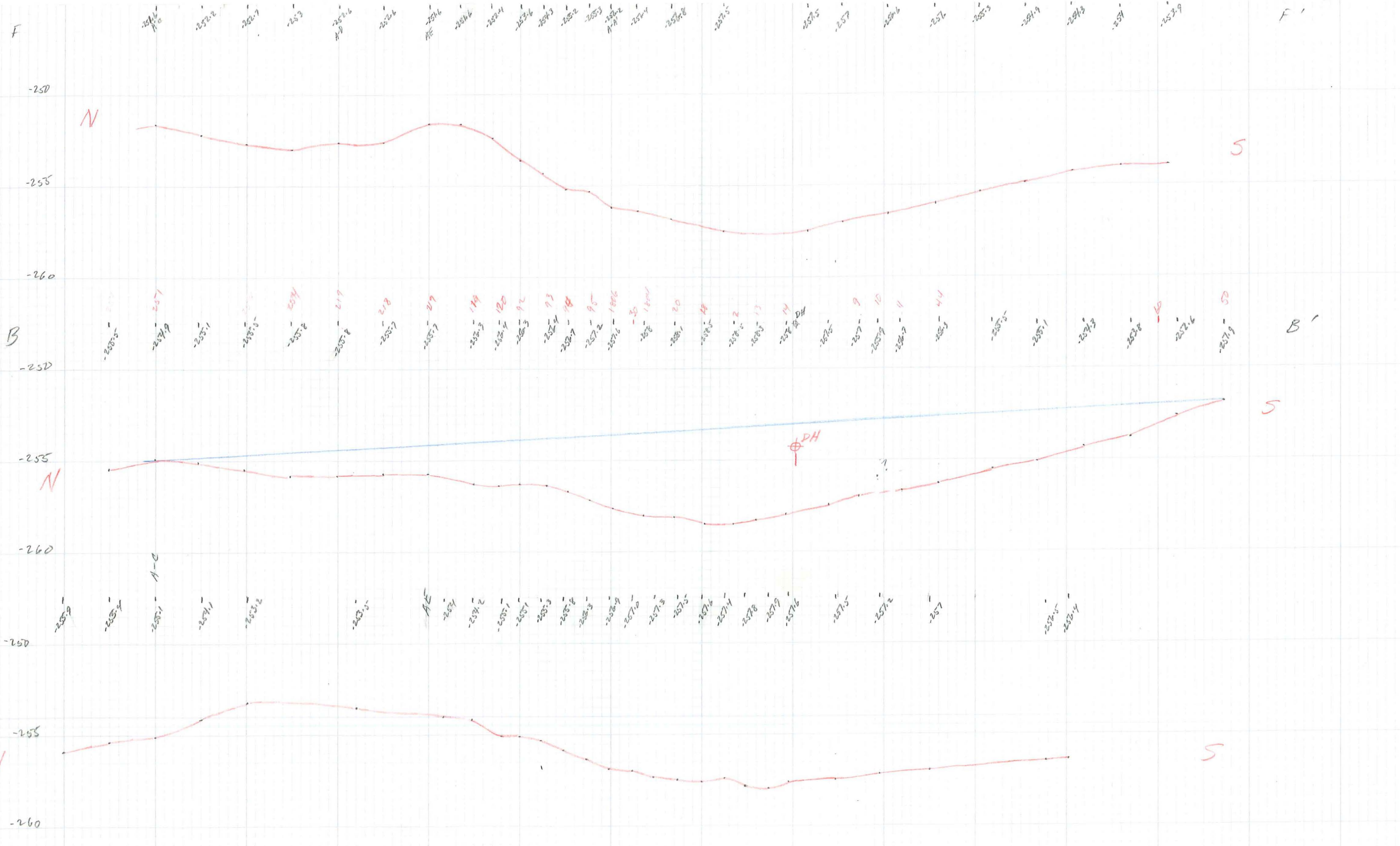
Number of Grid Points in X Direction: 19

Number of Grid Points in Y Direction: 19

Grid Spacing in Feet: 5280.00

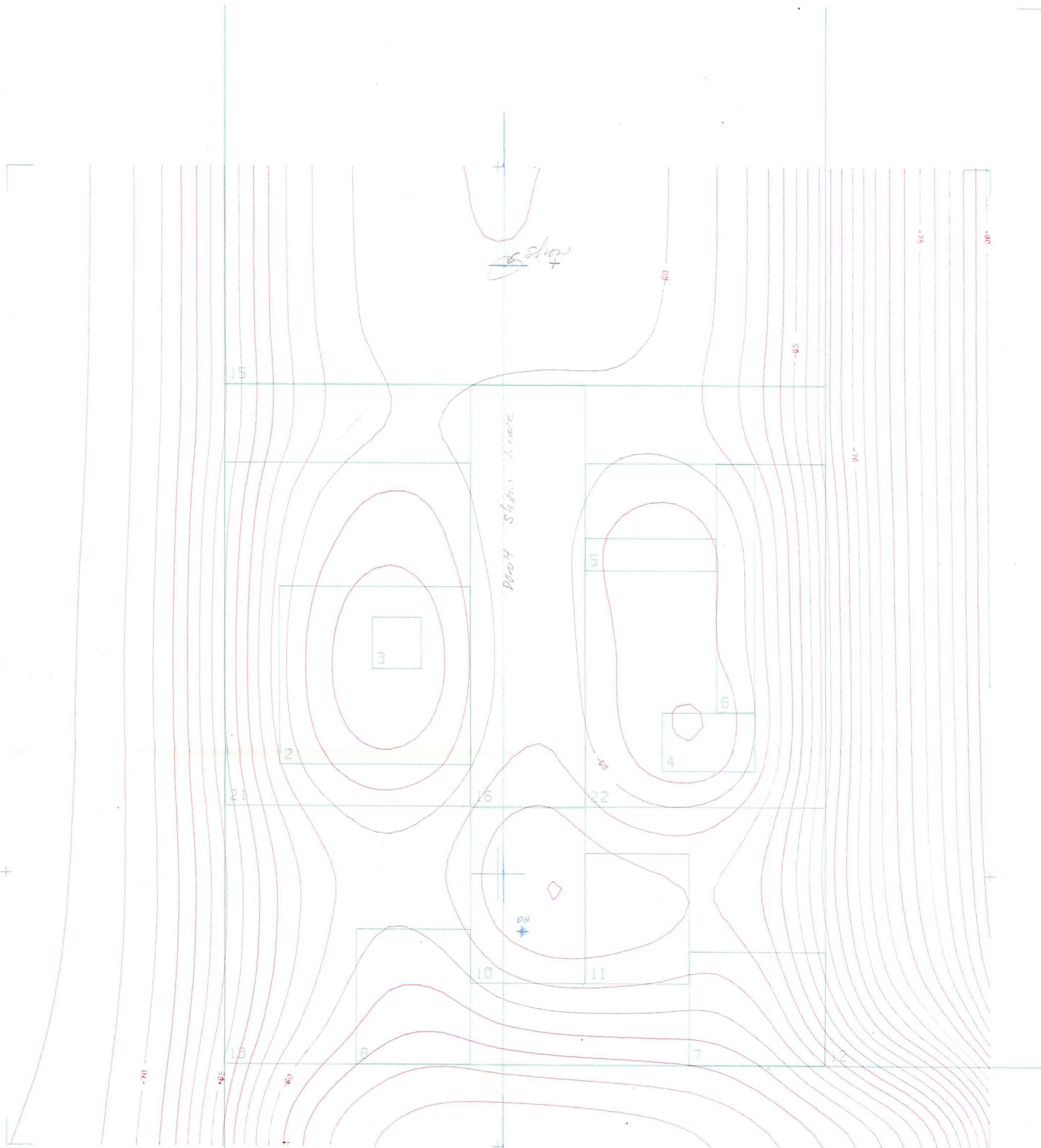
X Offset in Feet: 0.00

Y Offset in Feet: 21120.00



1" = 1 mi

Possibly
National Academies Press



| PROJECT NAME | GRID PARAMETERS |
|---------------------------|--|
| ALAMOSA AREA, COLORADO | GRID POINTS X 19. : Y 19. " |
| GRAVITY SURVEY | GRID SPACING : 5200. FEET |
| MODEL NAME | GRID DIMENSIONS X 95040. : Y 95040. FEET |
| 3-D GRAVITY MODEL | GRID OFFSET X: 0. Y: 21120. FEET |
| NUMBER OF PRISMS : 22. | SCALE 1: 125000. |
| GRAVITY MODEL (MILLIGALS) | DATA MAXIMUM: -55. |
| | DATA MINIMUM: -80. |
| | CONTOUR INTERVAL 5. |

