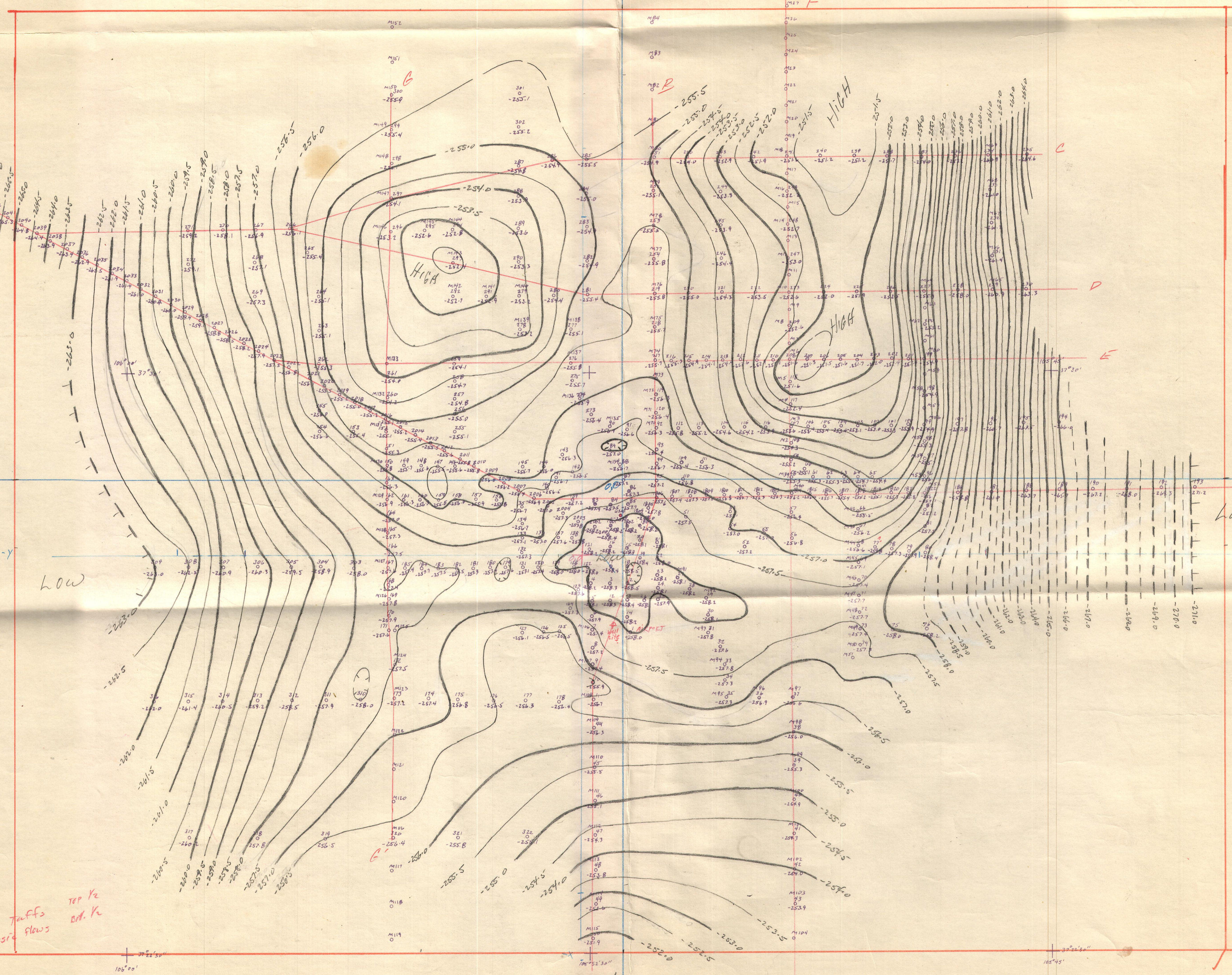
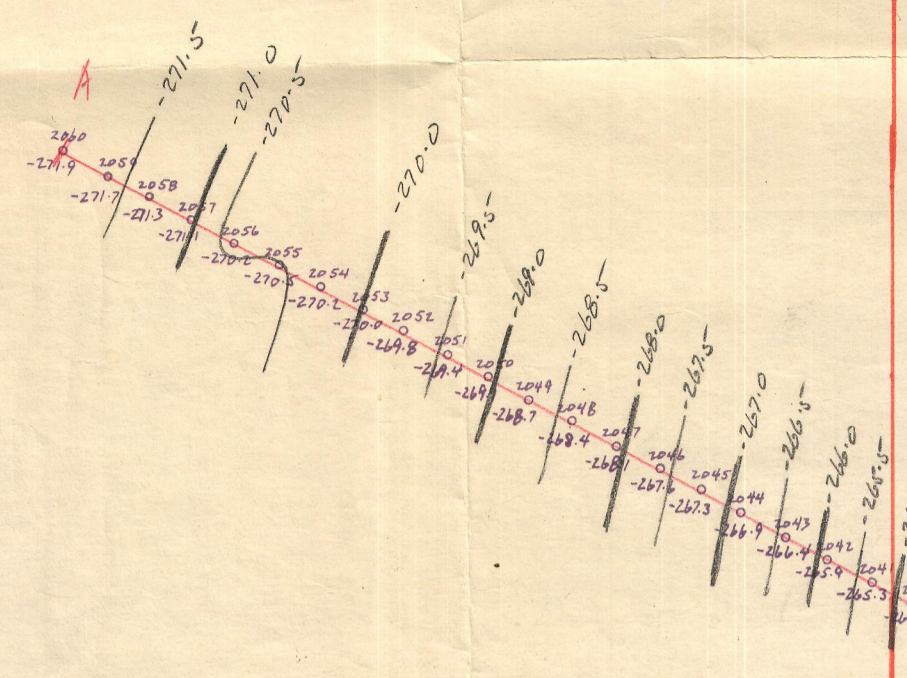
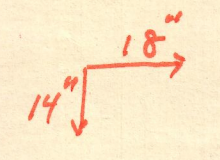


106°07'30"

106°00'

105°51'30"

105°45'



106°07'30"

37°30'

QAL 2400'  
VAP 6350'  
Re - ↓  
Rlyp Tuffs  
Basic flows  
TOP K2  
OF K2

HIGH X1  
B'

PLATE II

SIMPLE Bouguer Gravity Map  
of the  
ALAMOSA AREA, ALAMOSA COUNTY, COLORADO  
BOUGUER GRAVITY MAP