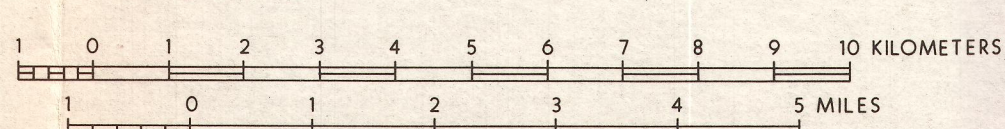


Well	Temp (°C)	Gradient at T. D.	Total Depth (m)
I	55		54
II	102	+ve	169
III	93	-ve	210
IV	43		88
I	22		
9-5	22		230
9-6	34	+ve	103
9-7	23		244
9-9	55	-ve	96
9-11	22		136
Allison	39	-ve	
KS-1	>200		2,222
KS-2	>200		2,440
HGP-A	~360	+ve	1,964
NSF-KS 137			

EXPLANATION

- Geologic Features from Holcomb (1980)
- Crater or caldera
 - Fault
 - Fissure
 - Approximate boundary of dike complex proposed by Furumoto (1978)
 - Well (cool)
 - Well (hot)
 - Coastal spring temp. °C
- Thermal data from Kauchikaua and Klein (1977), Epp and Halunen (1979)



**PLATE I
GENERALIZED GEOLOGY
and
THERMAL WELL MAP
EAST RIFT AREA, HAWAII**

compiled for
THERMAL POWER COMPANY
August 1983

HOWARD P. ROSS, PH.D.
Consulting Geophysicist

62033075089