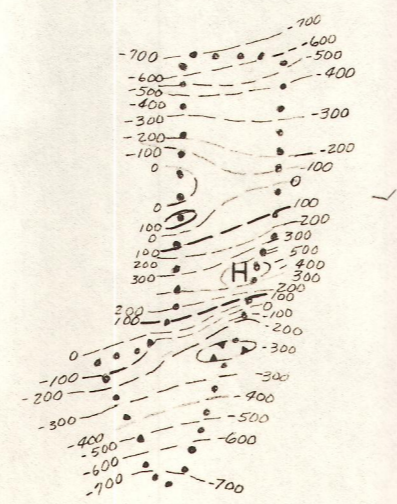
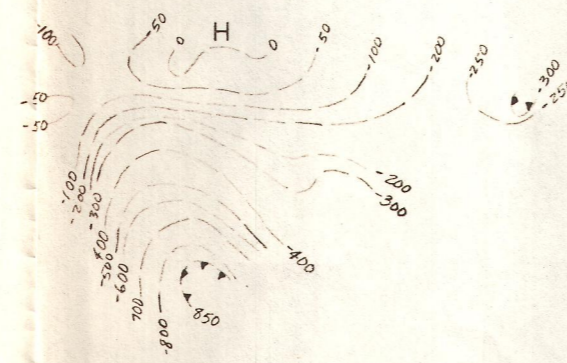
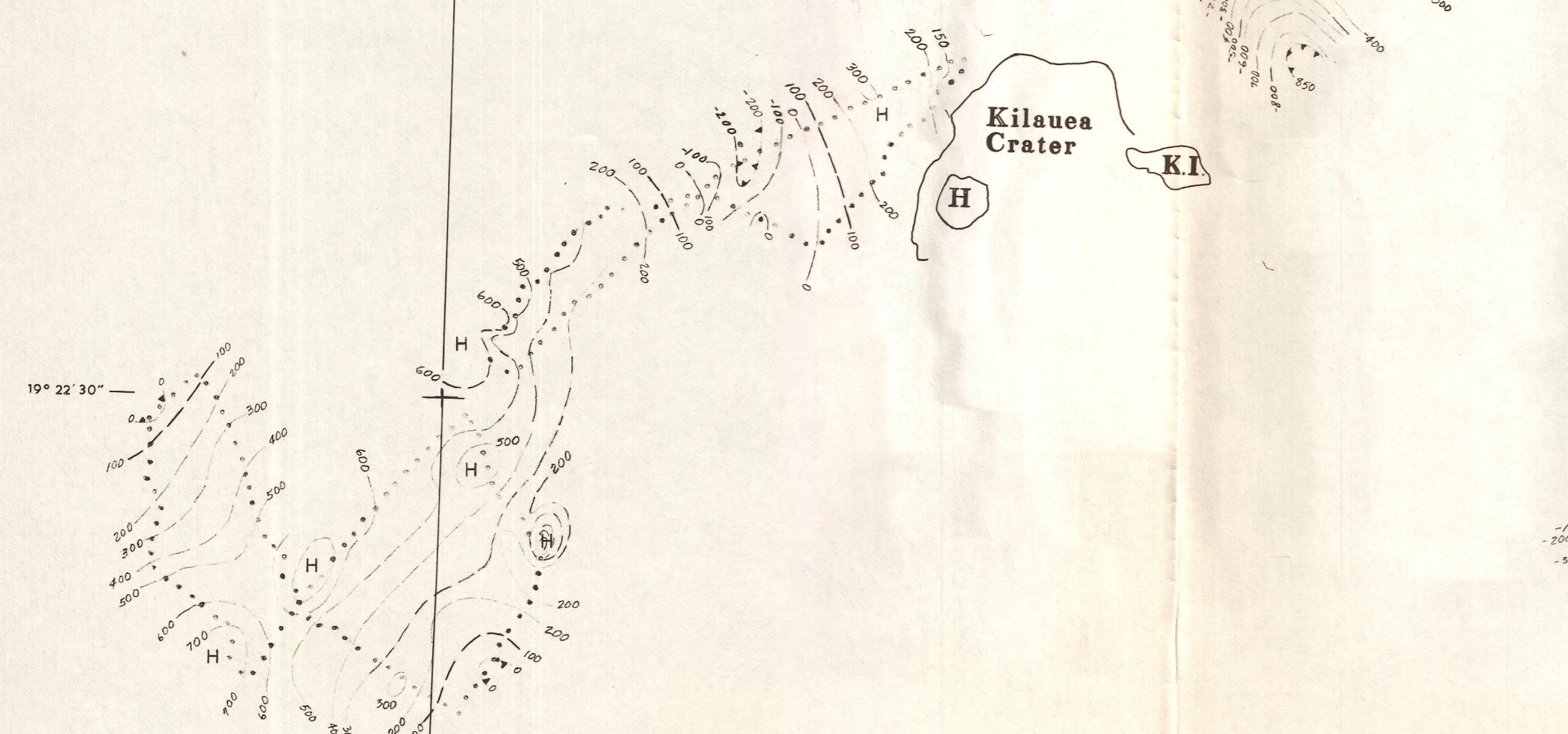


19° 30'

155° 22' 30"

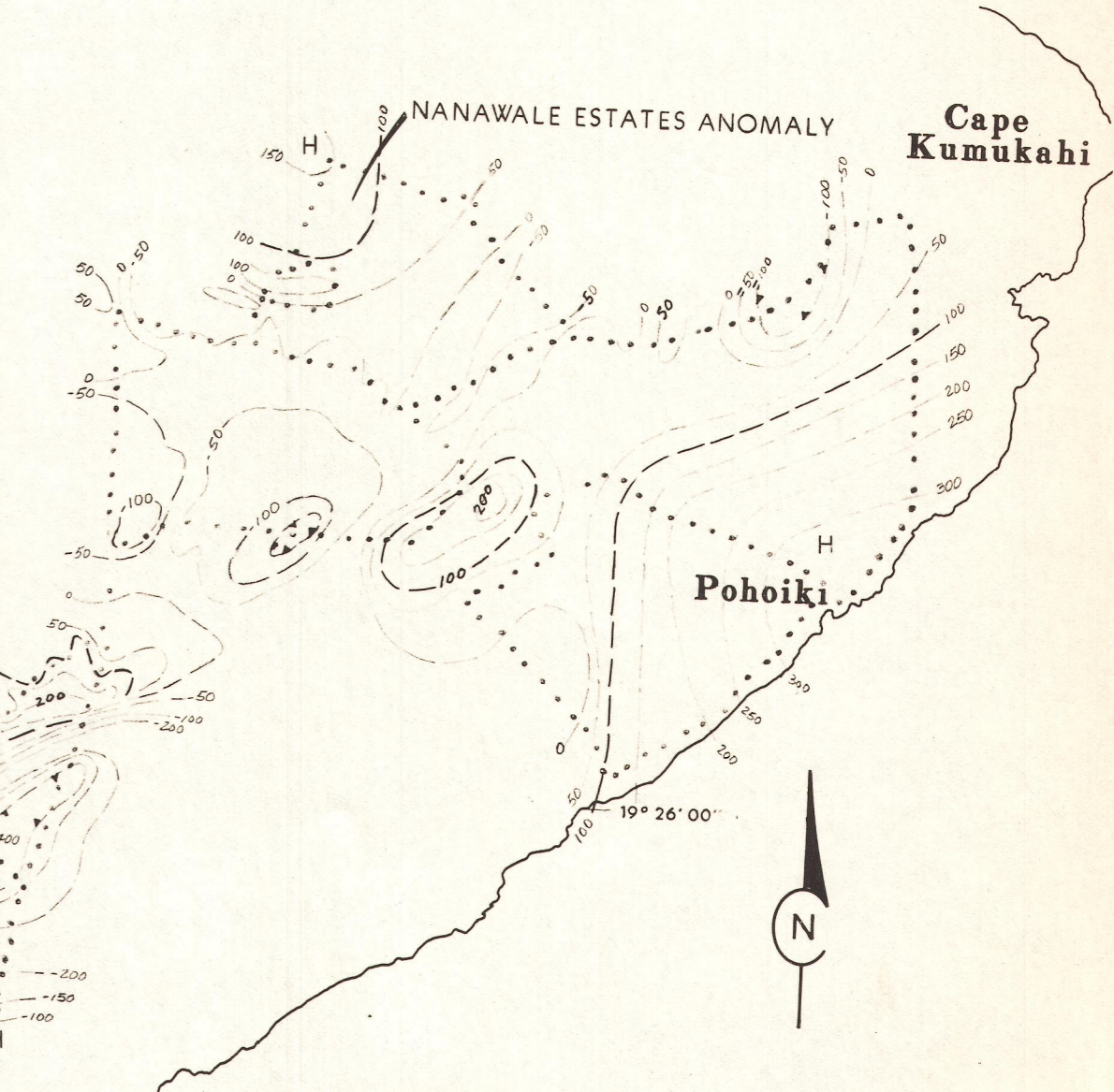
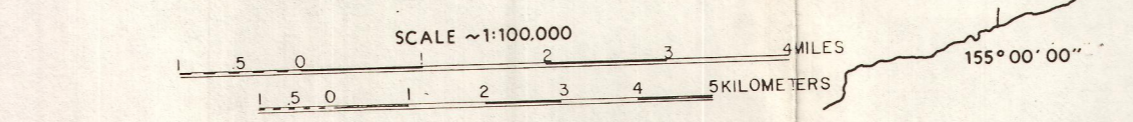


+

+

+

+



154° 54' 30" 19° 33' 30"

19° 26' 00"

155° 00' 00"

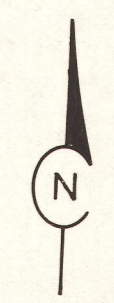
19° 22' 30"

PLATE IV
ARCO SELF POTENTIAL
SURVEY
EAST RIFT AREA, HAWAII

SELF POTENTIAL, HAWAII
 PUNA DISTRICT
 VALUES IN MILLIVOLTS
 CONTOUR INTERVAL 100 mv
 NOT CORRECTED FOR ELEVATION
 SCALE ~1:100,000 [DATE 7-6-78] BY EL [NO ARBO HAI 06] checked by B.P.

MICROGEOPHYSICS CORPORATION
 PLATE 4.1

6L0330766A9



Cape Kumukahi

NANAWALE ESTATES ANOMALY