


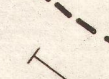
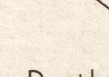


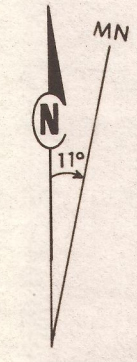
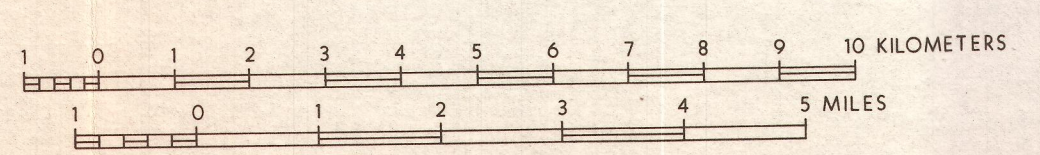
EXPLANATION

-  Magnetic Dike Complex (dashed where border uncertain) $6,000 \leq K \leq 16,000 \mu\text{gs}$
-  Secondary magnetic source (lava flows? $2000 \leq K \leq 8000 \mu\text{gs}$)
-  Low Magnetization Area (Magma; Hot rock; alteration?)
-  Possible transverse structure (linear magnetic features)
-  Profile for 2 1/2 D Magnetic Model

Depths: Most magnetic sources shown occur at shallow depths, typically 200 to 1000 feet.

PLATE III
AEROMAGNETIC INTERPRETATION
EAST RIFT AREA, HAWAII
 compiled for
THERMAL POWER COMPANY
 August 1983

HOWARD P. ROSS, PH.D.
 Consulting Geophysicist



6203307 9/89