



Bouguer Gravity Map of Puna District  
 (maximum value set to zero)  
 From Furumoto et al., 1976  
 (210 stations at an average grid  
 spacing of 0.5 km.)

**EXPLANATION**

- Regional Bouguer Gravity Surveys, Krivoy and Eaton (1961)
- Summit region of Kilauea Volcano
- East flank of Kilauea Volcano
- Interpretation of detailed Puna Survey
- Shaded area: Shallow higher density body (probable dike complex)
- Hatched area: Possible fault zone

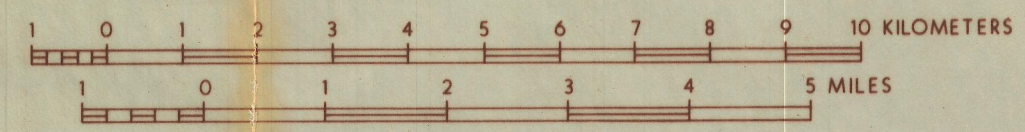


PLATE II  
**BOUGUER GRAVITY**  
**EAST RIFT AREA, HAWAII**  
 compiled for  
**THERMAL POWER COMPANY**  
 August 1982

660 3308 10 of 10 HOWARD P. ROSS, PH.D.  
 Consulting Geophysicist