



H I G H
R E S I S T I V I T Y

EXPLANATION

- Generalized resistivity section after Keller et al. (1977)
- T₁, T₂, T₃, T₄ TDEM transmitter
- AA', BB' Sounding section (Skokan, 1974; Keller et al., 1977)
- S₁ EM transient transmitter (Kauahikaua and Klein, 1977) (Kauahikaua, 1981)
- Receiver site with interpreted second layer resistivity (ohm-m) thickness (m)
- Low resistivity area (Second depth layer shaded on low)
- High resistivity area (Kauahikaua & Klein, 1978)
- KK1, KK2 Bipole source
- G5 Schlumberger soundings

* For depth interpretation see section representation

The top of layer 2 is assumed to be sea level for all EM transient interpretations

Note: EM induction soundings by Kauahikaua and Klein (1977) not included due to limited depth penetration (d < 200 m)

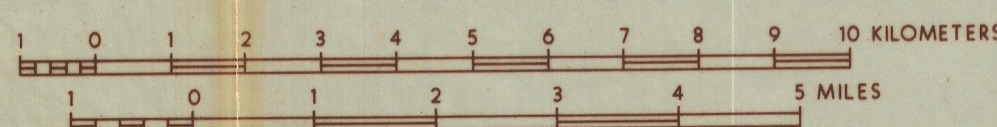


PLATE V
DETAILED ELECTRICAL SURVEYS
EAST RIFT AREA, HAWAII
 compiled for
THERMAL POWER COMPANY
 August 1982

HOWARD P. ROSS, PH.D.
 Consulting Geophysicist

GL 03308 30978