



Kilauea Crater

(Generalized from Zablocki, 1979)

**EXPLANATION**  
 Data acquisition mid 1974  
 SP Contour Interval: 0.1v  
 (dipole length = 100 m)  
 (Avg. closure error < 30 mV/km, linearly distributed)

- A, B, C, D** Significant SP anomalies
- A:** Surficial thermal feature - steaming fissure (1955)
- B:** 1790 eruptive fissure
- C:** Deep transform fault? Permeable fractures?
- ⊕ HIG well, d=1962 m; April 1976

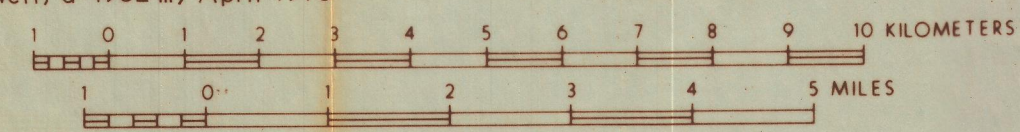


PLATE VI  
 SELF POTENTIAL DISTRIBUTION  
 (By Charles J. Zablocki, 1977)  
**EAST RIFT AREA, HAWAII**  
 compiled for  
 THERMAL POWER COMPANY  
 August 1982

HOWARD P. ROSS, PH.D.  
 Consulting Geophysicist

6603308 5 of 10