

HILO

KEAAU

CAPE KUMUKAHI

PAHOA

Kilauea Crater

KAIMU

SALT WATER ZONE

EXPLANATION

- Low resistivity (5-10 ohm-m) Second layer from reconnaissance resistivity data - not verified by detailed data.
- Moderate-strong magnetic source
- Weak magnetic source
- Possible fault inferred from magnetic data. Interpretation accuracy limited by 1.6 km. line spacing and terrain clearance variation.
- Low resistivity zone ($P < 5$ ohm-m)
- AR Low resistivity anomaly
- High resistivity area ($P > 300$ ohm-m)
- North-south fault zone interpreted from gravity, magnetic and micro-earthquake data (width uncertain)
- Moderate to high temperature well
- SP maxima

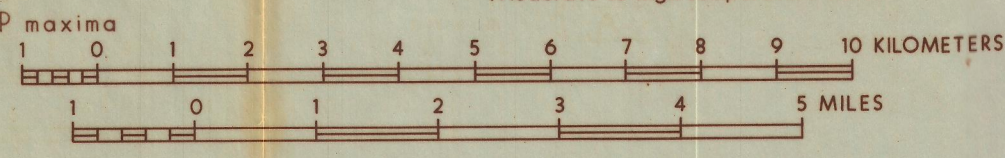


PLATE VIII
 INTEGRATED DATA SUMMARY
 EAST RIFT AREA, HAWAII
 compiled for
 THERMAL POWER COMPANY
 August 1982

GL 03308 80710 HOWARD P. ROSS, PH.D.
 Consulting Geophysicist