

RIO SABINA
SANDOVAL CO.
CO.

HATTA CLARA
INDIAN
RESERVATION

T20N - R. 2E.

T19N R2E

T18N R2E

T18N R3E

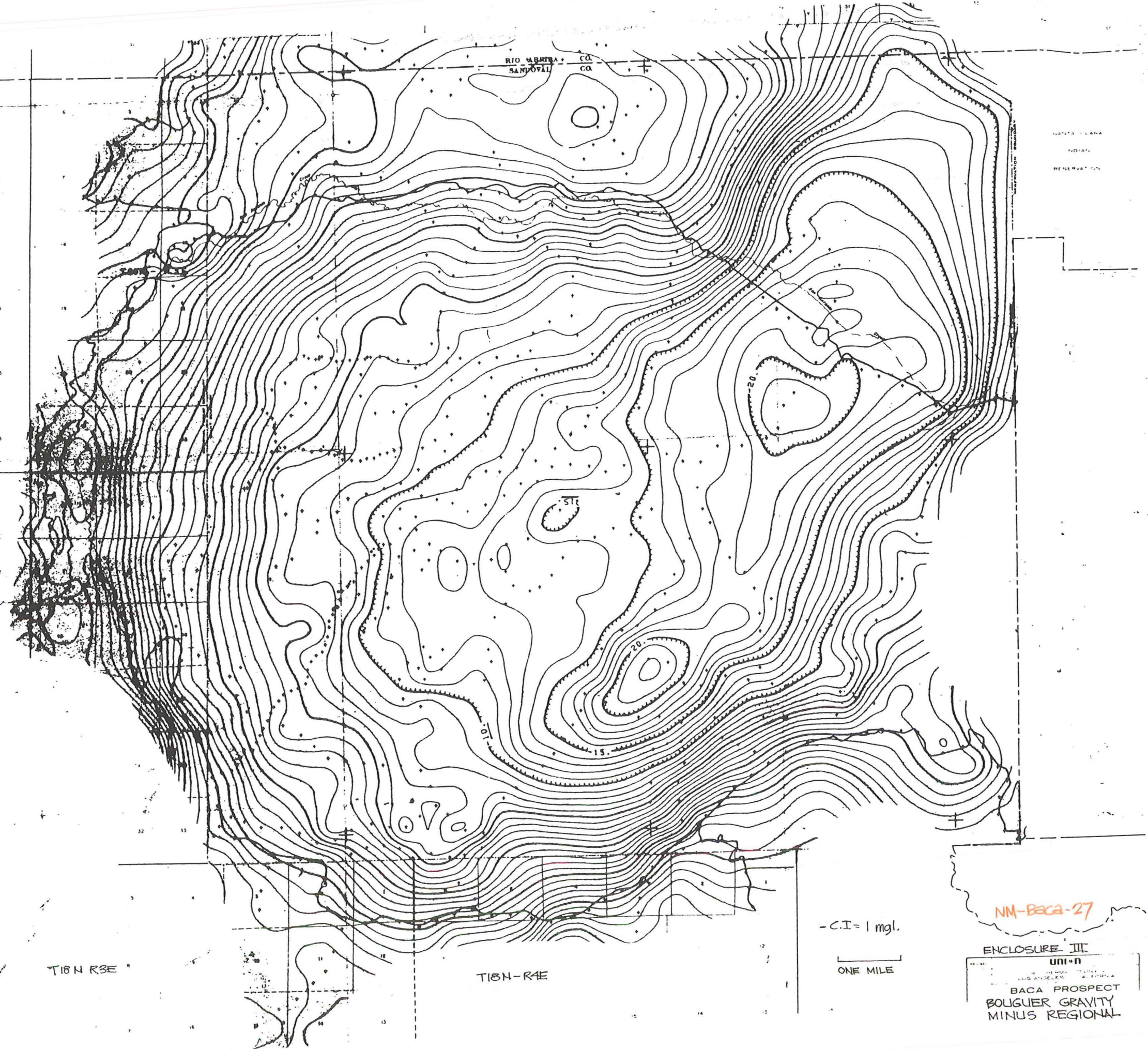
T18N-R4E

- C.I. = 1 mgl.

ONE MILE

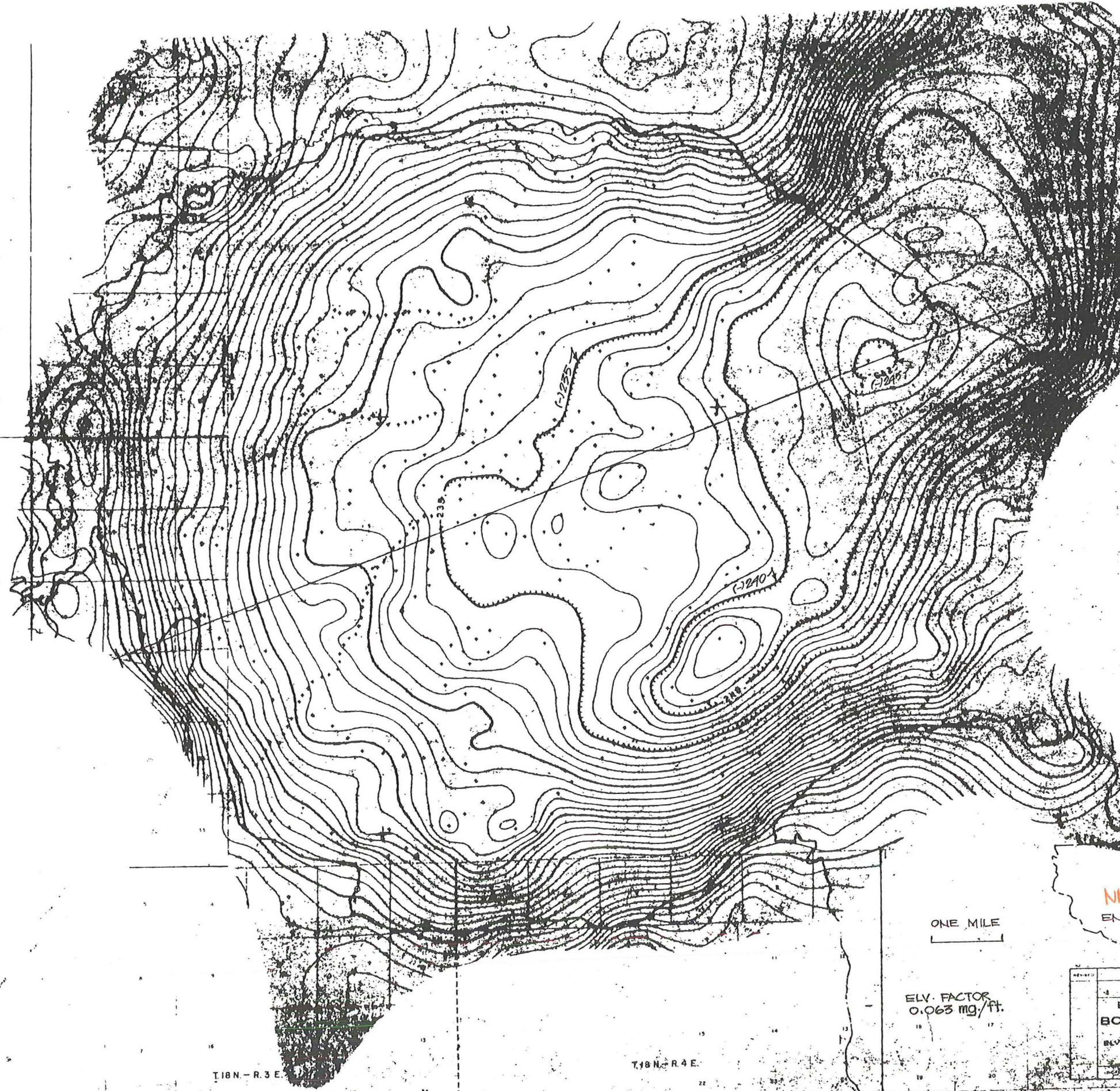
NM-BACA-27

ENCLOSURE III
UNIT 11
BACA PROSPECT
BOLIGUER GRAVITY
MINUS REGIONAL



T20N-R.2E

BAHITA LAMA
INDIAN
RESERVATION



ONE MILE

ELV. FACTOR
0.063 mg./ft.

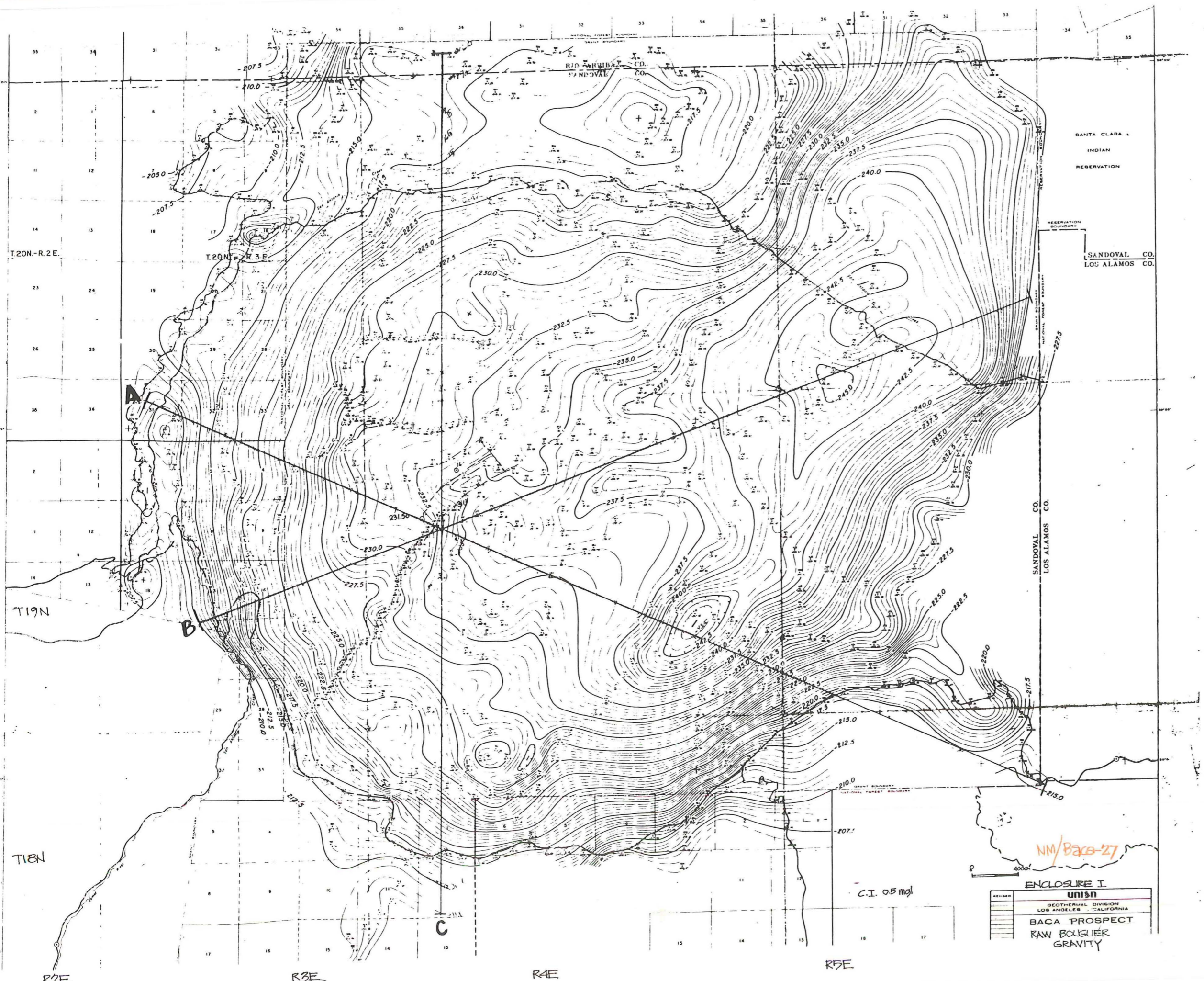
NM/BACA-27
ENCLOSURE II.

| |
|---------------------------|
| UNIVERSITY |
| GEOLOGICAL DIVISION |
| LOS ANGELES, CALIFORNIA |
| BACA PROSPECT |
| BOUQUER GRAVITY |
| ELV. FACTOR 0.063 mg./ft. |
| EDUCATIONAL & RESEARCH |
| COUNTIES, NEW MEXICO |

T18N-R.3E

T18N-R.4E

ENCLOSURE II



SANTA CLARA
INDIAN
RESERVATION

SANDOVAL CO.
LOS ALAMOS CO.

SANDOVAL CO.
LOS ALAMOS CO.

ENCLOSURE I
UN13N
GEO THERMAL DIVISION
LOS ANGELES CALIFORNIA
BACA PROSPECT
RAW BOULGIER
GRAVITY

NM/Bax-27

C.I. 0.5 mg/l

4000'

T20N-R2E

T19N

T18N

R2E

R3E

R4E

R5E