

COMPANY CONCRETE CONSTRUCTION CO.
 FIELD BACA
 WELL #15
 COUNTY SANDOVAL
 STATE NEW MEXICO
 LOCATION LAT. 35.8946
LONG. 106.5803 EL. 9117'

TOTAL DEPTH 4-29-75
 SPUD DATE 4-29-75
 COMPLETION DATE _____
 DRILLING CONTRACTOR LOFFLAND
 ENGINEER H. MOSS
 GEOLOGIST T.R. SLODOWSKI

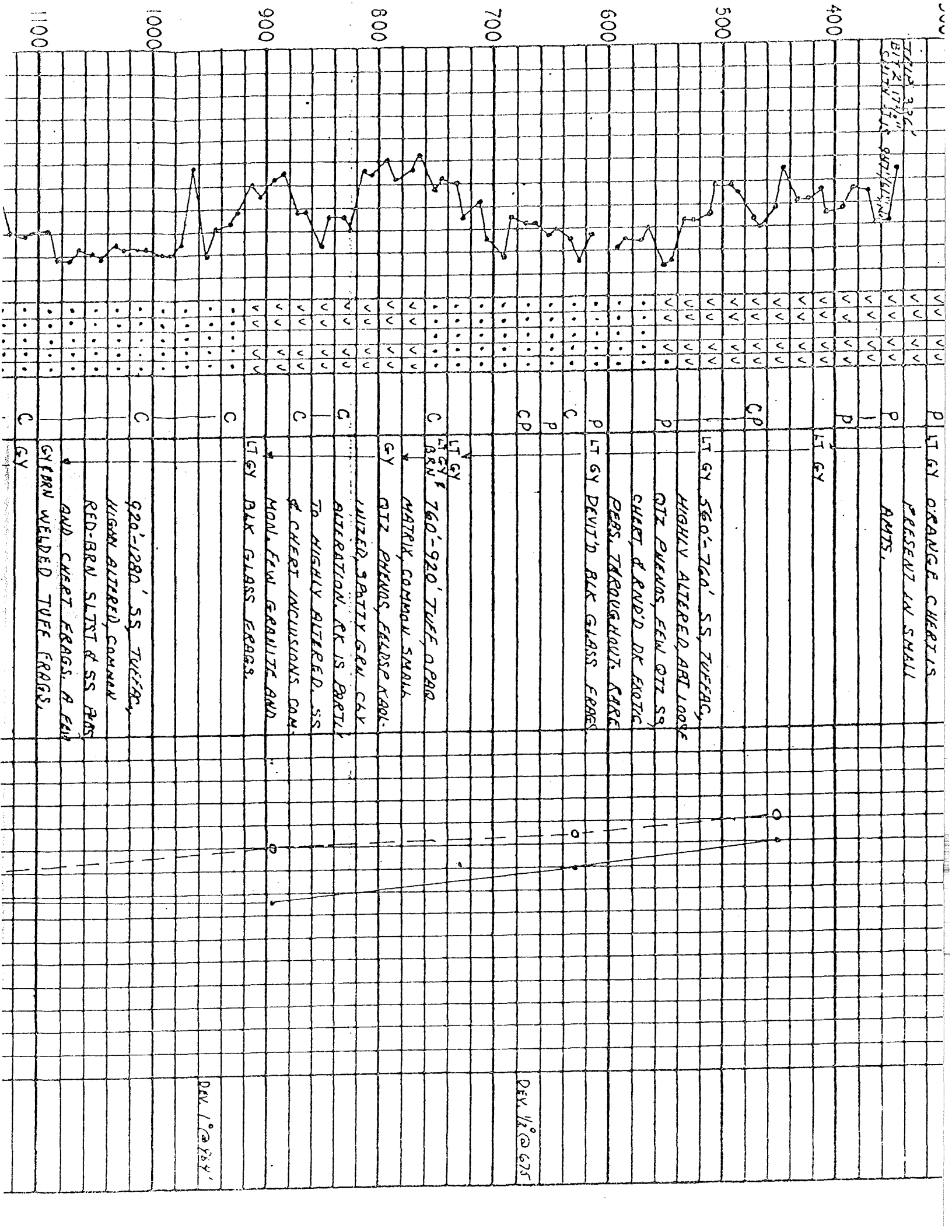
20": 210' TO SURFACE, CEMENTED
13 3/8": 1273' " " "
9 5/8": 2509' " " "

EXPLANATION

- | | | | |
|-----------------------|----------------|---------------|-------------------------------|
| DRILLING | ROCK | MINERALS | PHYSICAL - CHEMICAL |
| NB - NEW BIT | ☐ SHALE | ☐ CHERT | D.H. - DOWN HOLE |
| RRB - RERUN BIT | ☐ SILTSTONE | ☐ VOLCANICS | PPM - PARTS PER MILLION |
| CB - CORE BIT | ☐ SANDSTONE | ☐ INTRUSIVE | B.H. - BOTTOM HOLE |
| LC - LOST CIRCULATION | ☐ CONGLOMERATE | ☐ TUFF | F.L. - FLOW LINE |
| DEV - DEVIATION | ☐ LIMESTONE | ☐ METAMORPHIC | T. - TEMPERATURE |
| DST - DRILL STEM TEST | ☐ DOLOMITE | ☐ _____ | P. - PRESSURE |
| | ☐ GYP, ANHYD. | ☐ _____ | T.C. - TIME SINCE CIRCULATION |
| | | | W.H. - WELL HEAD |
- TUFF GROUNDMASS: (O) OPAQUE, (T) TRANSLUCENT

DEPTH	PENETRATION DATA		LITHOLOGY				PHYSICAL-CHEMICAL DATA				MISC.
	☐ FT./HR. 100 MIN.	☐ MIN/FT. 50	PRIMARY LITH 100 %	SECONDARY MINERALS 0	DESCRIPTION	MUD FLOWLINE TEMPERATURE					
						70° F	100°	150°	200°		
			•••••		BUFF LT GY & ANK						
			•••••		0-140' WX'D RHYOLITE &						
			•••••		ANDESITE PORPHY IN						Dev. 1/4" @ 120'
			•••••		RED-BRN GY VARICOLORED CLAYS						
100			•••••		GY SILTST & SS.						
			•••••		BUFF LT GY & PINK						
140'			•••••		CALDERA FILL						Dev. 1/4" @ 120'
			VV	VV	P LT BANDELIER TUFF						
			VV	VV	GY						
200			VV	VV	140'-560' TUFF, LGP'LY						
			VV	VV	HYDROTHERMALLY ALTER-						
			VV	VU	ED TO WHIT CLAY. A FEW						
			VV	VV	QTZ PHENOS; FELDSP						
			VV	VV	COMPLETELY ALTERED.						
300			VV	VV	BELOW 320' BRN &						
			VV	VV	P LT GY ORANGE CHERT IS						
			VV	VV	PRESENT IN SMALL						
			VV	VV	AMTS.						
			VV	VV							
400			VV	VV	P						
			VV	VV	LT GY						
			VV	VV							

TRIP 336
 BIT 2 1/2" DIA
 900/1100



P LT GY ORANGE CHERT IS
 PRESENT LN SMALL
 ARMS.

P
 LT GY

CP

P LT GY 560'-760' SS, TUFFAC,
 HIGHLY ALTERED, ART LOOSE
 RTZ PHENOS, FEW RTZ SS,
 CHERT, & RND'D DK EXOTIC
 PERS. THROUGHOUT. KARF

P

CP

C LT GY DEVID' BLK GLASS FRAGS

C

P

C

C

C

C

DEV 1/2 @ 675

DEV 1 @ 950

1100

1000

900

800

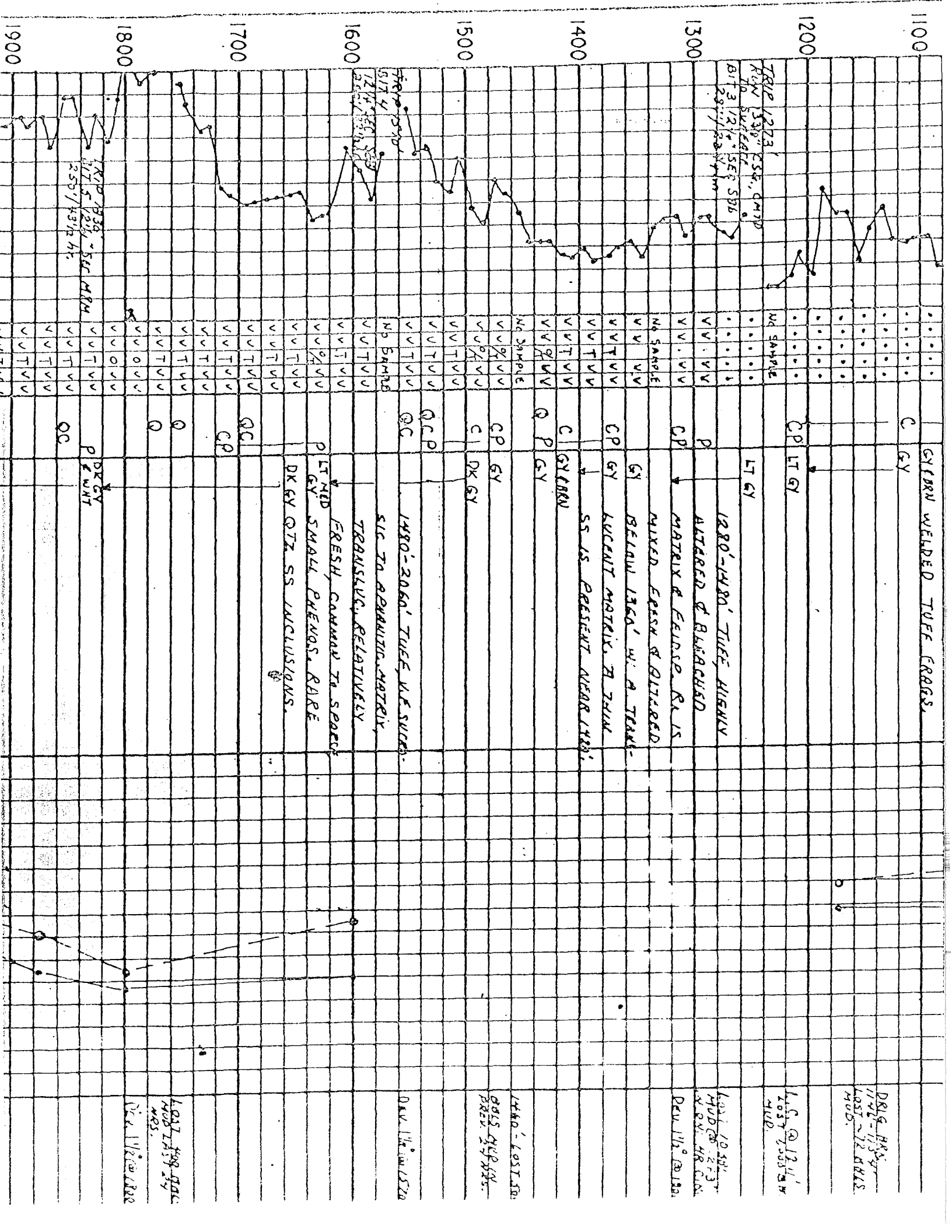
700

600

500

400

0



1100

GREEN WEARDED TUFF FRAGS

DRIF. H.S.
1142-1155
1057-112 DRIF.
MOD.

1200

CP LT GY

1.5 @ 1211'
1057-1058.5 H
MUD.

1300

1280'-1480' TUFF, HEAVILY ALTERED & BURNED

1051-1058
MUD @ 1273'
1057-1058.5 H
MUD.

1400

MATRIX & FEINSP. RA IS

DEV 112 @ 1300

1500

BELOW 1360' W. A TRAIL-
SS IS PRESENT NEAR 1480'

1480'-1051.5 H
GRS GY
DEV 24 H.S.

1600

1480'-2060' TUFF, W.F. SURF.

DK W. 112 @ 1520

1700

SIC TO APPARITION, MATRIX,
TRANSLOC. RELATIVELY

FRESH, COMMON TO SPARS

1800

LT MID GY SMALL PHENOS. RARE

DK GY QTZ SS INCLUSIONS

1900

TRIP 1273
ROW 1530' EST. QM7D
NO SAMPLE

TRIP 1338
1175-1211 SEC MRM
2557-1312 H

1100

CP GY

CP GY

1200

CP LT GY

CP LT GY

1300

CP

CP

1400

CP GY

CP GY

1500

CP

CP

1600

CP

CP

1700

CP

CP

1800

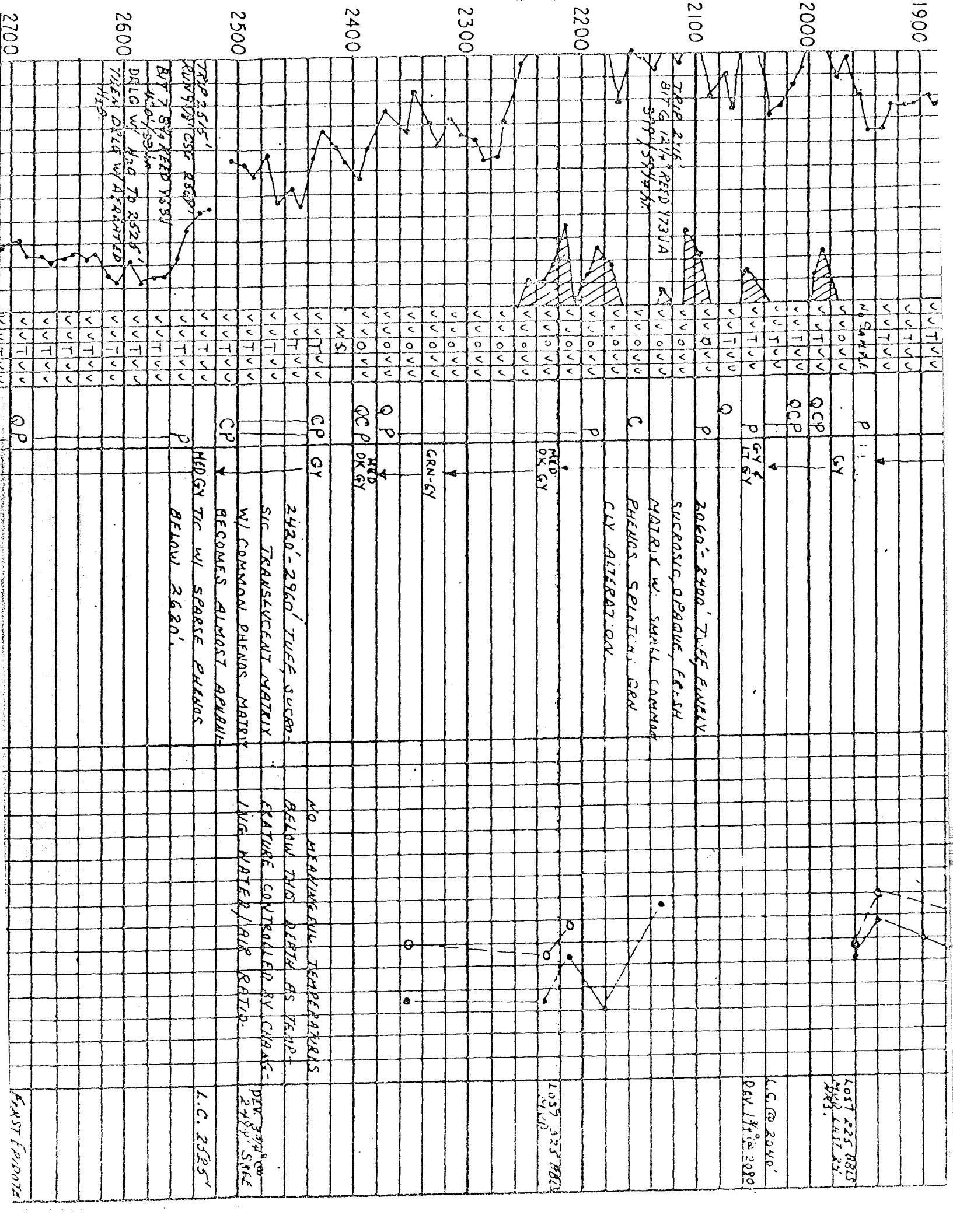
CP

CP

1900

CP

CP



2700

VT V V

P 11

NO MEASURABLE TEMPERATURES BELOW TWO DEPTHS AS TEMPERATURE CONTROLLED BY CHANGE IN W/ WATER, RISE RAINF.

1.0. 2525'

2600

VT V V

QCP

SIC TRANSLUCENT MATRIX W/ COMMON PHENOS. MATRIX BECOMES ALMOST APHANTAL

2500

VT V V

QCP

SUCROSIC, OPAQUE, FRESH MATRIX W/ SMALL CONCHOIDAL PHENOS. SPALLING GRN CLY. ALTERATION.

2400

VT V V

QCP

TRIP 214
BIT G 12 1/4" REED 773VA
3790/594450

2300

VT V V

QCP

TRIP 215
RUN 9787057 REED 773VA
BY 7 5/8" REED 773VA
440/551M

2200

VT V V

QCP

TRIP 216
BIT G 12 1/4" REED 773VA
3790/594450

2100

VT V V

QCP

TRIP 217
BIT G 12 1/4" REED 773VA
3790/594450

2000

VT V V

QCP

TRIP 218
BIT G 12 1/4" REED 773VA
3790/594450

1900

VT V V

QCP

TRIP 219
BIT G 12 1/4" REED 773VA
3790/594450

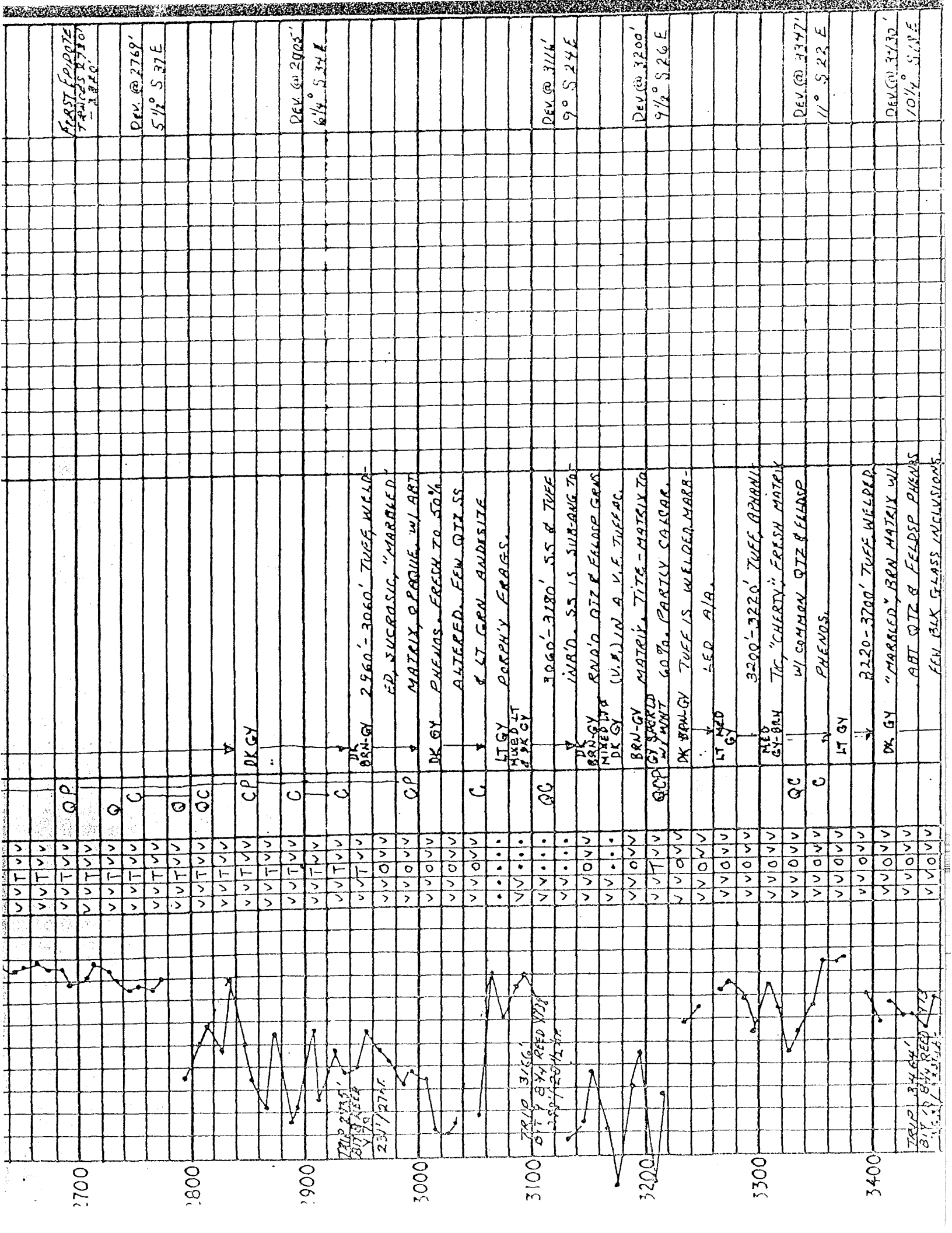
2700

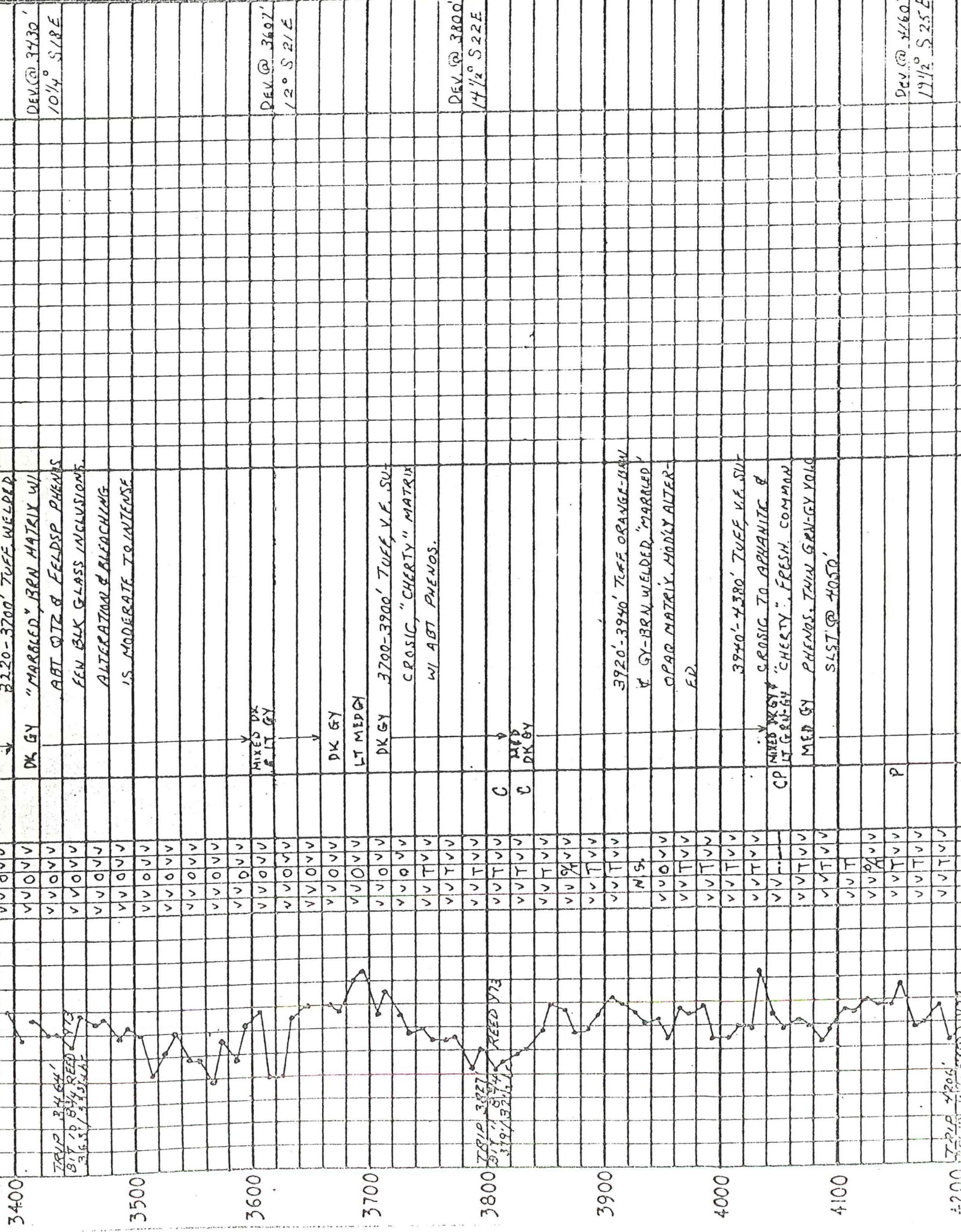
VT V V

QCP

TRIP 220
BIT G 12 1/4" REED 773VA
3790/594450

1.0. 2525'



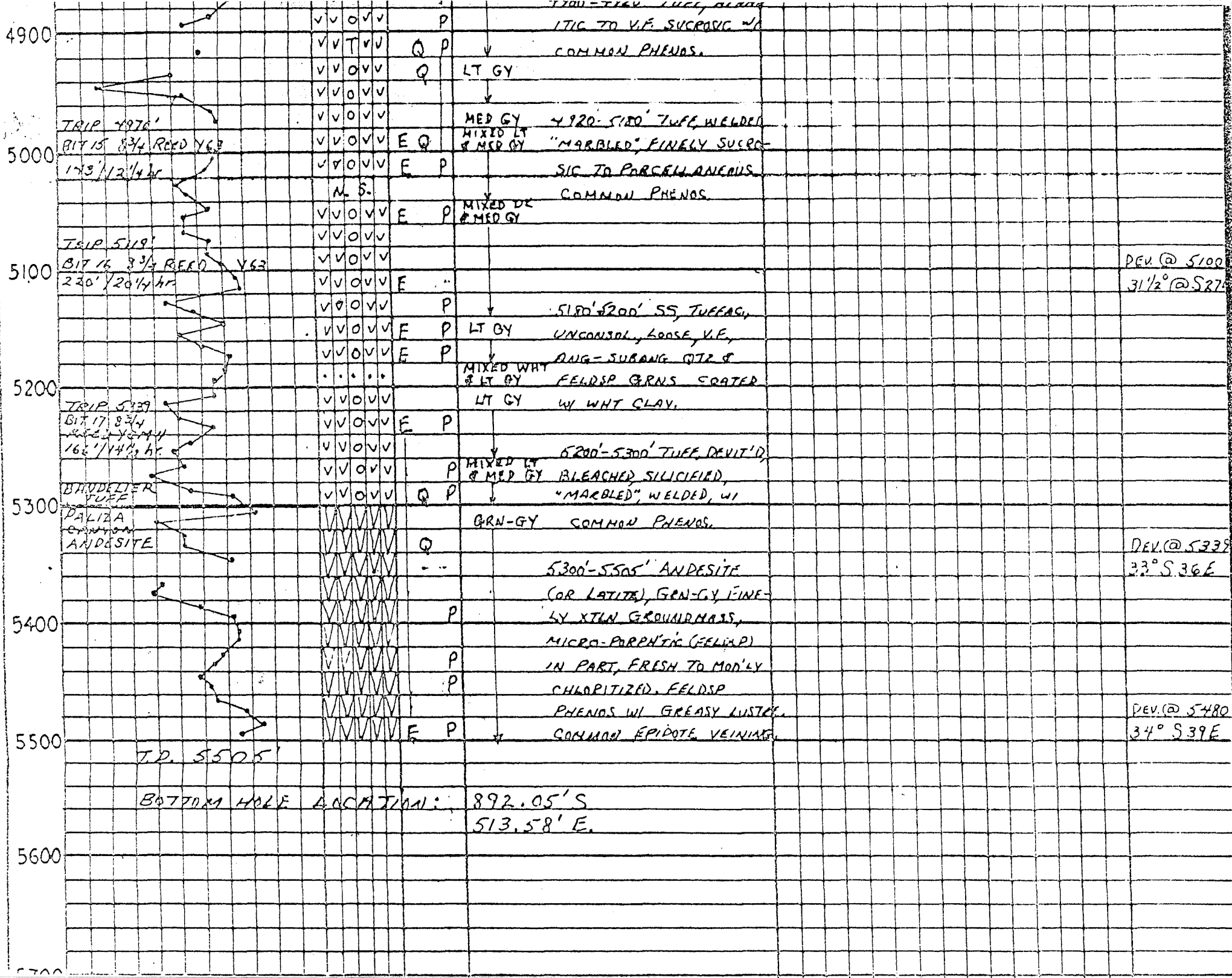


DEV @ 3430'
10 1/4° S 21 E

DEV @ 3607'
12° S 21 E

DEV @ 3800'
14 1/2° S 22 E

DEV @ 4160'
19 1/2° S 25 E



5600

5700

5800

5900

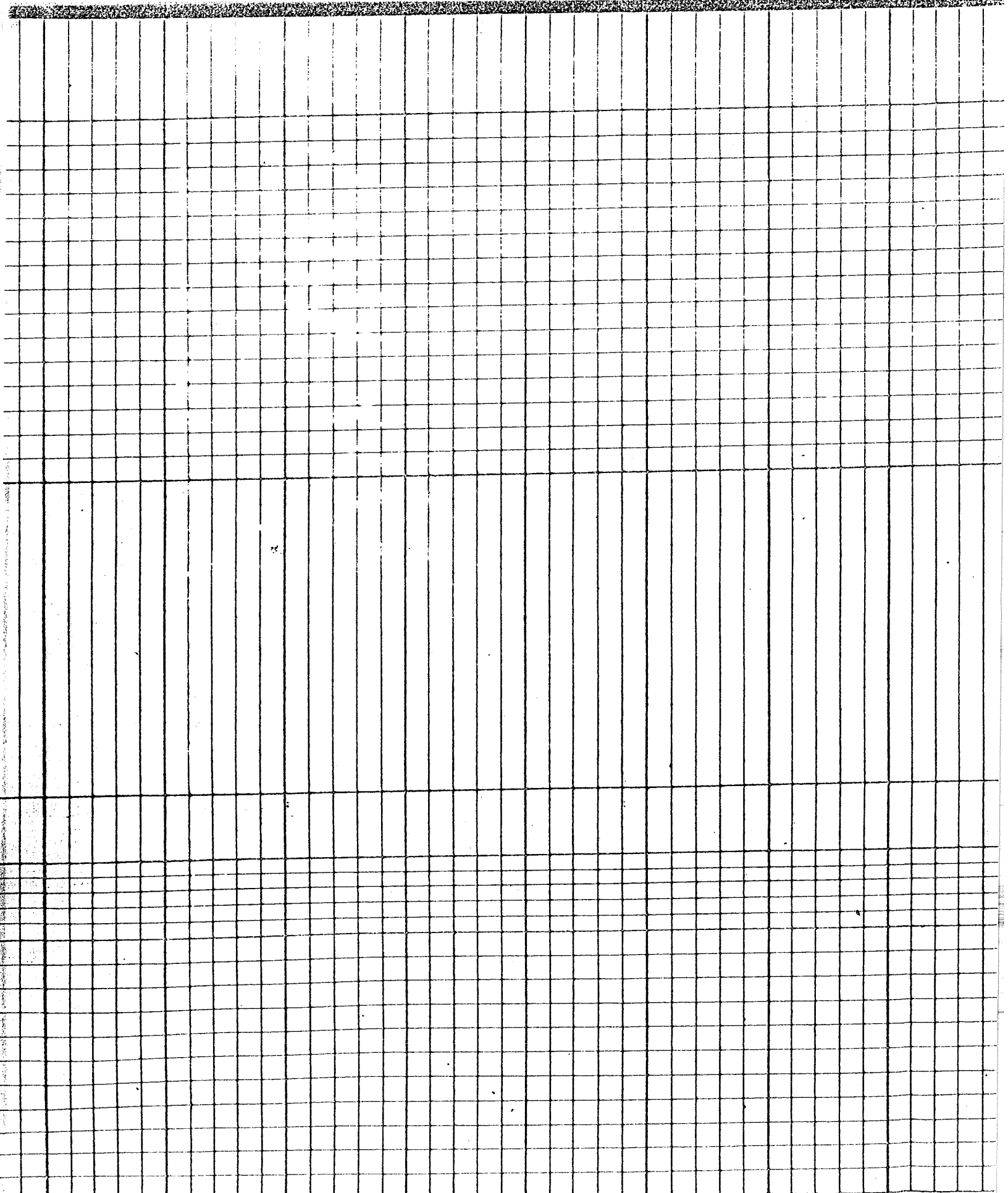
6000

6100

6200

6300

07.11.83 513.58'E.



6300

6400

6500

6600

6700

6800

6900

7000