

COMPANY UNION OIL CO. OF CALIF.  
 FIELD BACA  
 WELL #16  
 COUNTY SANDOVAL  
 STATE NEW MEXICO  
 LOCATION LAT. 35.9037  
LONG. 106.5688 EL. 9622'

TOTAL DEPTH 1002  
 SPUD DATE JUNE 19, 1975  
 COMPLETION DATE AUG. 21, 1975  
 DRILLING CONTRACTOR LOFFLAND  
 ENGINEER H. MOSS  
 GEOLOGIST T.R. SLODOWSKI

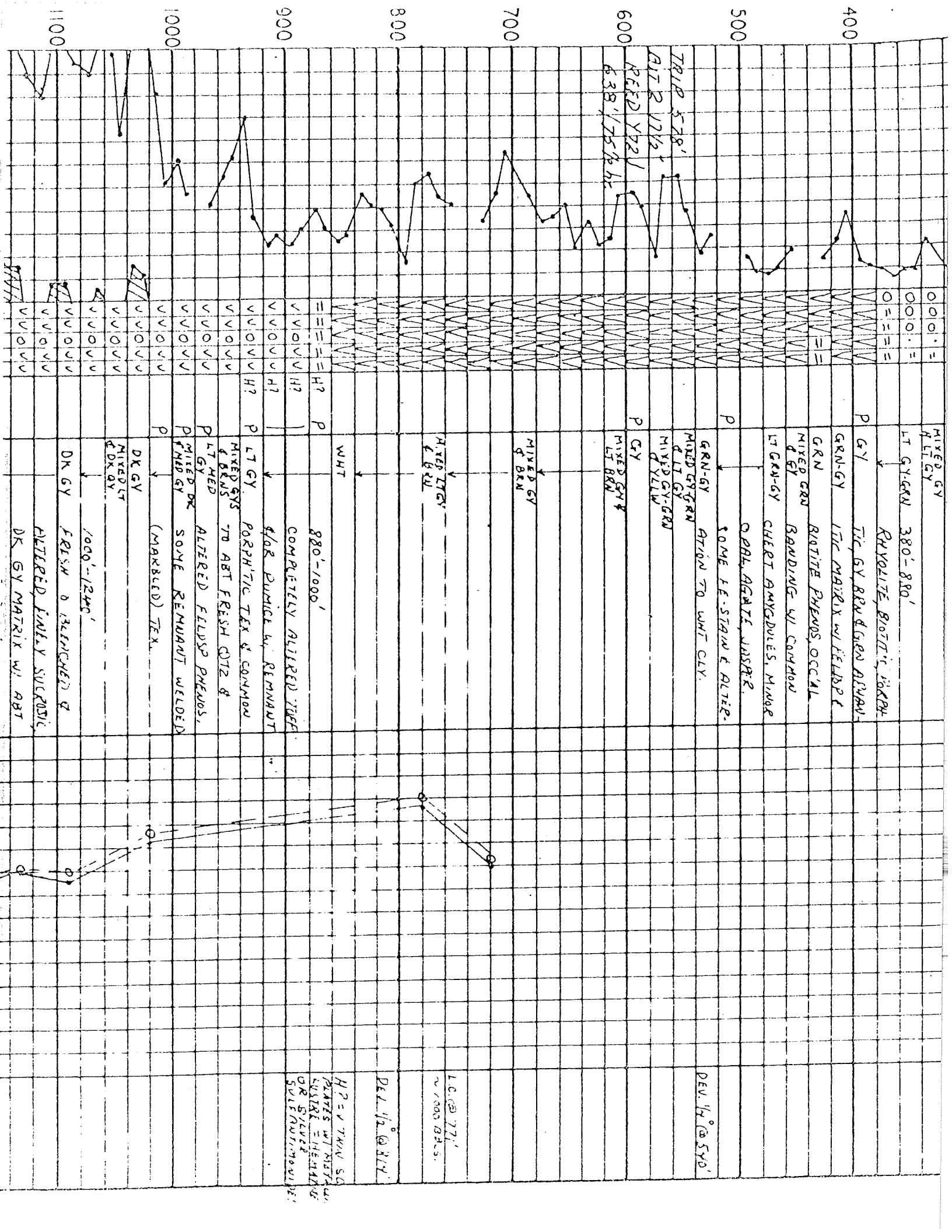
CASING RECORD  
20" : 193' TO SURF, CMTD  
13 7/8" : 1215' " " " "  
9 5/8" : 2905' TO 1100' " "

EXPLANATION

DRILLING	ROCK	MINERALS	PHYSICAL - CHEMICAL
NB - NEW BIT	☐ SHALE	☐ CHERT	↓ H. DOWN HOLE
RRB - RERUN BIT	☐ SILTSTONE	☐ VOLCANICS	M.H. - 80' OM HOLE
CB - CORE BIT	☐ SANDSTONE	☐ INTRUSIVE	FL - FLOW LINE
LC - LOST CIRCULATION	☐ CONGLOMERATE	☐ TUFF	T. TEMPERATURE
DEV - DEVIATION	☐ LIMESTONE	☐ METAMORPHIC	P. PRESSURE
DST - DRILL STEM TEST	☐ DOLOMITE	☐ _____	T.C. TIME SINCE CIRCULATION
	☐ GYP, ANHYD	☐ _____	W.H. WELL HEAD

TUFF MATRIX: (O) OPAQUE (T) TRANSLUCENT

DEPTH	PENETRATION DATA ☐ FT./HR. 100 MINS ☐ MIX./FT. 50 10 FT.	LITHOLOGY		DESCRIPTION	PHYSICAL-CHEMICAL DATA			MISC.
		PRIMARY LITH	SECONDARY MINERALS		•—•—• MUD FLOWLINE TEMP	○—○—○ SUCTION	100° 150° 200°	
		NO SAMPLE		MIXED BUFF & GY 0-380'				
	Dr. 17 1/2" hole w/ mud. Bit #1 17 1/2" Reed Yaw 228' / 10 3/4 hrs.	0 0 0 0		MIXED RED-BRN & GY CALDERA FILL-VARI-				
		0 0 0 0		MIXED RED & GY COLORED SS, SLTST & CLYST				
		0 0 0 0		LT GY SPKRD W/ RED W/ ART BIOTITIC PERLITIC				
100		0 0 0 0		MIXED LT GY & RED-BRN AMYGDALAR RHYOLITE				
		0 0 0 0		MIXED GY & RED-BRN CLASTS & SANDS, OCC'LY				
		0 0 0 0		LT TO MED GY ALTERED TO WHT CLY. MINOR				
		0 0 0 0		OPAL, AGATE & JASPER				
200		NO SAMPLE		COMMON RED & YELLOW F. STAIN				Dev. 1/2" @ 210'
	TRIP 228' H.O. 26" SMITH H.O. RUN 20" CSG BYT LRR REED YAW 350' / 14 hrs.	0 0 0 0						
		0 0 0 0	P					
		0 0 0 0		LT GY				
300		0 0 0 0	P					
		0 0 0 0		MIXED GY & LT GY				
		0 0 0 0		LT GY-GRN 380'-880'				
		0 0 0 0						
400		0 0 0 0	P	RHYOLITE, BIOTITIC PORPH TIC, GY, BRN & GRN ACHAN-				
		0 0 0 0		GRN-GY LTIC MATRIX W/ FELDSP				
		0 0 0 0		GRN RIOTITE-PHENOS. OCC'AL				



MIXED GY  
ALT GY

LT GY GRN 380'-880'

RYHOLITE, BIOTITE, HORNBL.

GY TIL. GY BRN & GRN DRYPAN.

GRN-GY LTIC MATRIX W/ FELDSP &

GRN BIOTITE PHENOS, OCCAS.

MIXED GRN BANDING W/ COMMON

LT GRN-GY CHERT AMYGDULES, MINOR

QZ, AGATE, JASPER.

SOME FE-STAIN & ALTER.

GRN-GY ATION TO WHT CLY.

MIXED GY GRN

LT GY

MIXED GY-GRN

GY

MIXED GY

LT BRN

MIXED GY

BRN

MIXED GY

BRN

MIXED GY

BRN

MIXED GY

BRN

MIXED GY

BRN

MIXED GY

BRN

MIXED GY

BRN

MIXED GY

BRN

MIXED GY

BRN

MIXED GY

BRN

MIXED GY

BRN

DEV. 1/4 @ 5YD'

LC @ 77'

~ 1000 B.S.S.

DEL. 1/2 @ 314'

H2 = V THIN SQ

PLATES W/ MISTY

OR SILVER

OR SILVER

SUBSTR. = HEMATITE

SUBSTR. = HEMATITE

SUBSTR. = HEMATITE

SUBSTR. = HEMATITE

SUBSTR. = HEMATITE

SUBSTR. = HEMATITE

SUBSTR. = HEMATITE

SUBSTR. = HEMATITE

SUBSTR. = HEMATITE

SUBSTR. = HEMATITE

SUBSTR. = HEMATITE

SUBSTR. = HEMATITE

SUBSTR. = HEMATITE

SUBSTR. = HEMATITE

SUBSTR. = HEMATITE

SUBSTR. = HEMATITE

SUBSTR. = HEMATITE

SUBSTR. = HEMATITE

SUBSTR. = HEMATITE

SUBSTR. = HEMATITE

SUBSTR. = HEMATITE

SUBSTR. = HEMATITE

SUBSTR. = HEMATITE

SUBSTR. = HEMATITE

SUBSTR. = HEMATITE

SUBSTR. = HEMATITE

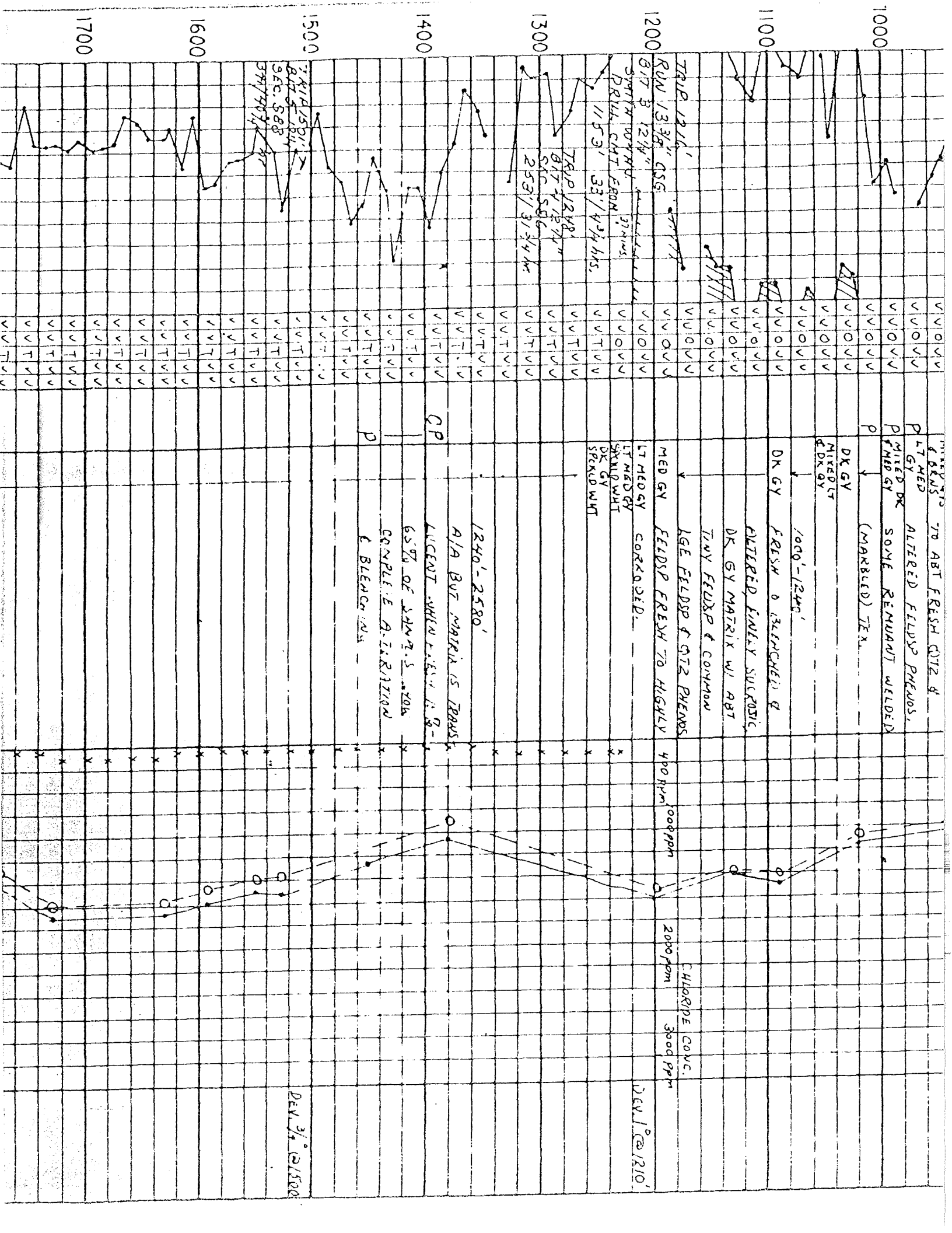
SUBSTR. = HEMATITE

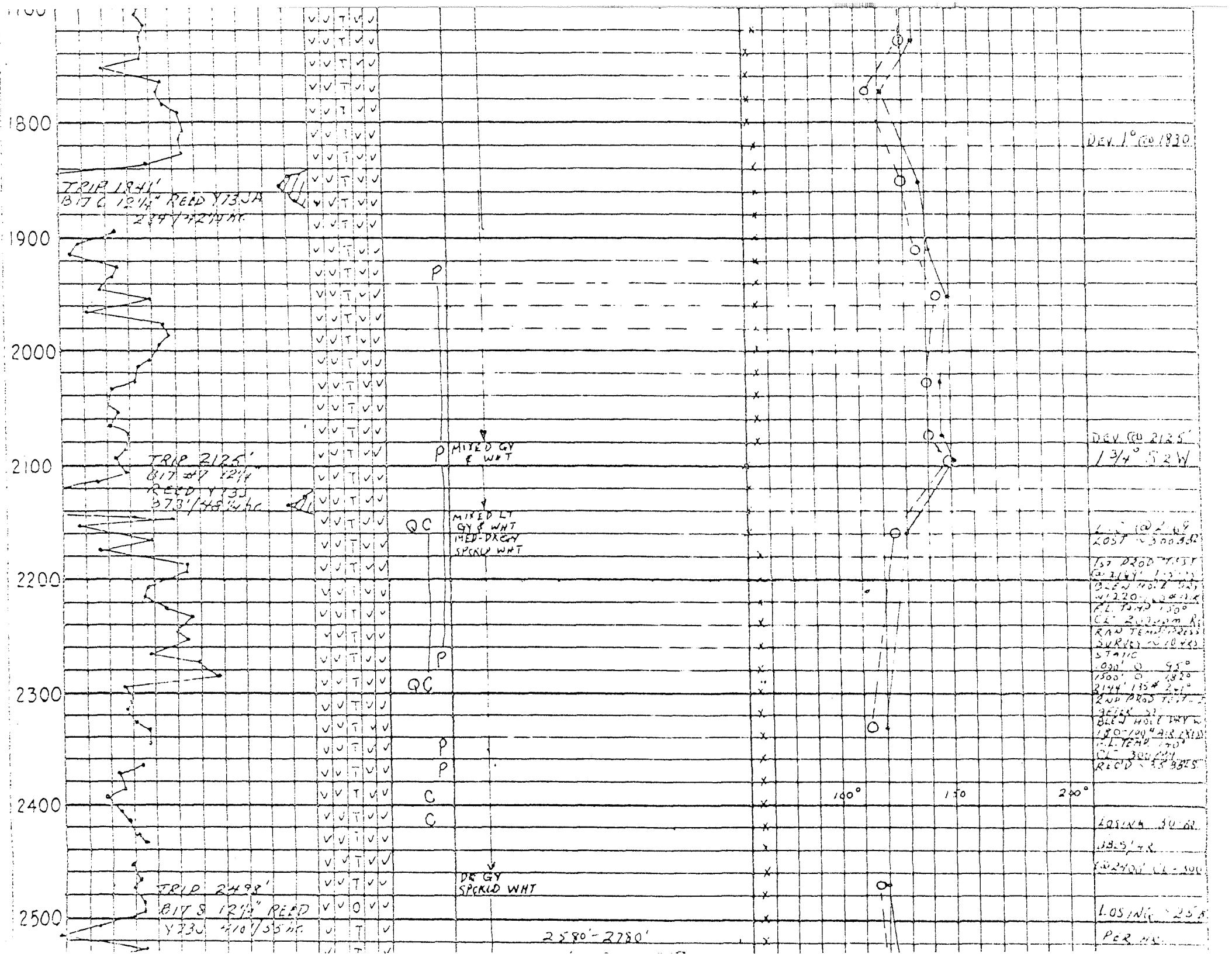
SUBSTR. = HEMATITE

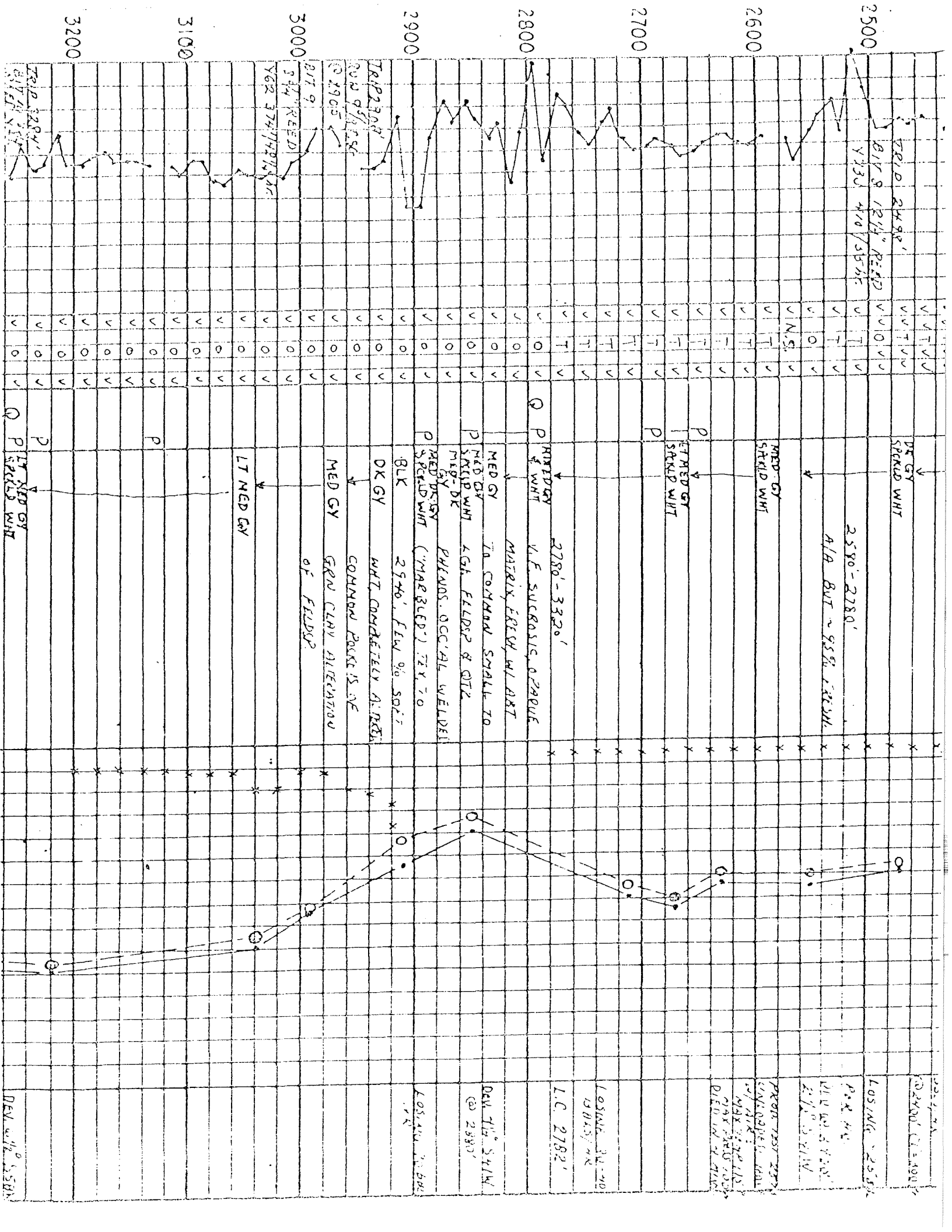
SUBSTR. = HEMATITE

SUBSTR. = HEMATITE

SUBSTR. = HEMATITE







2580' (2580)

2580' (2580)

2580' (2580)

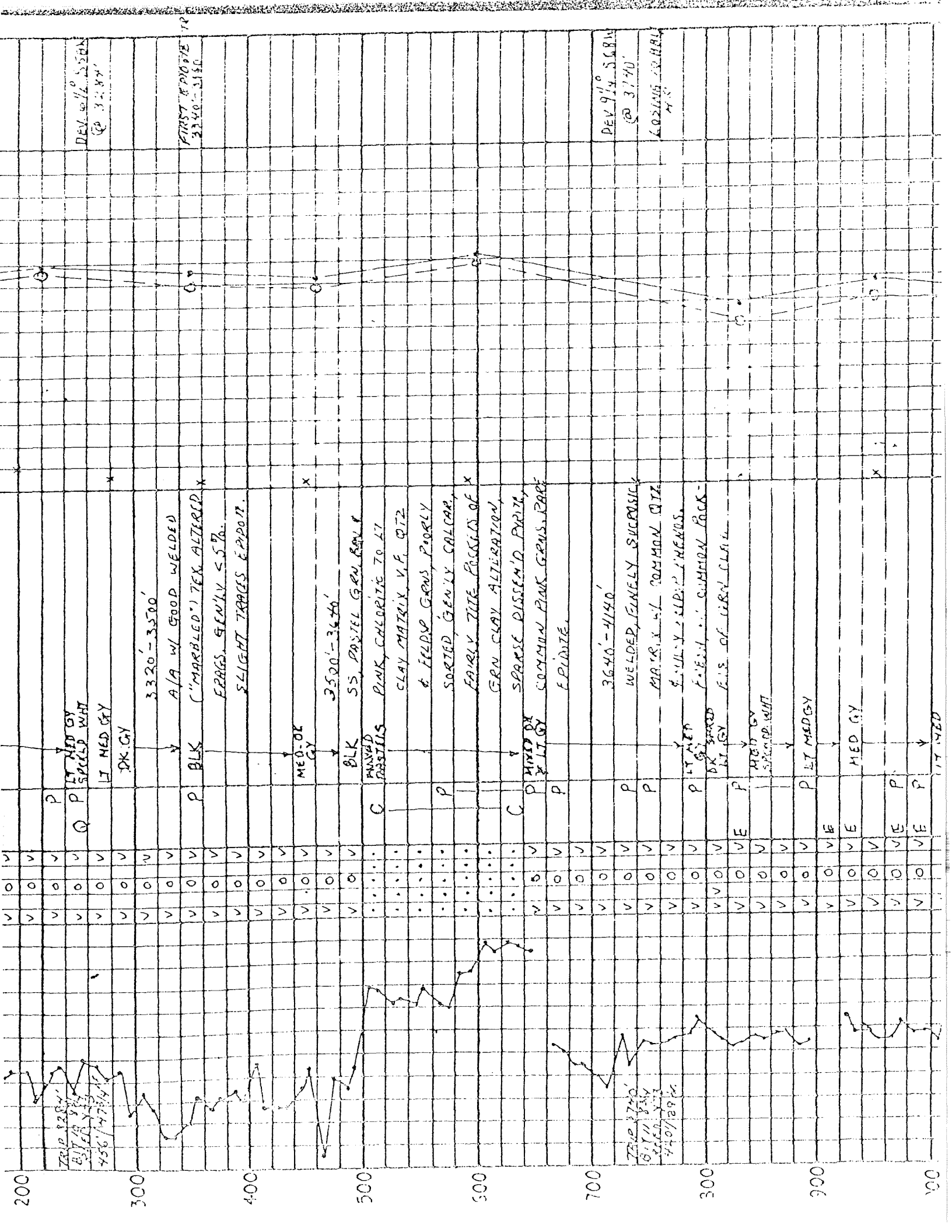
2580' (2580)

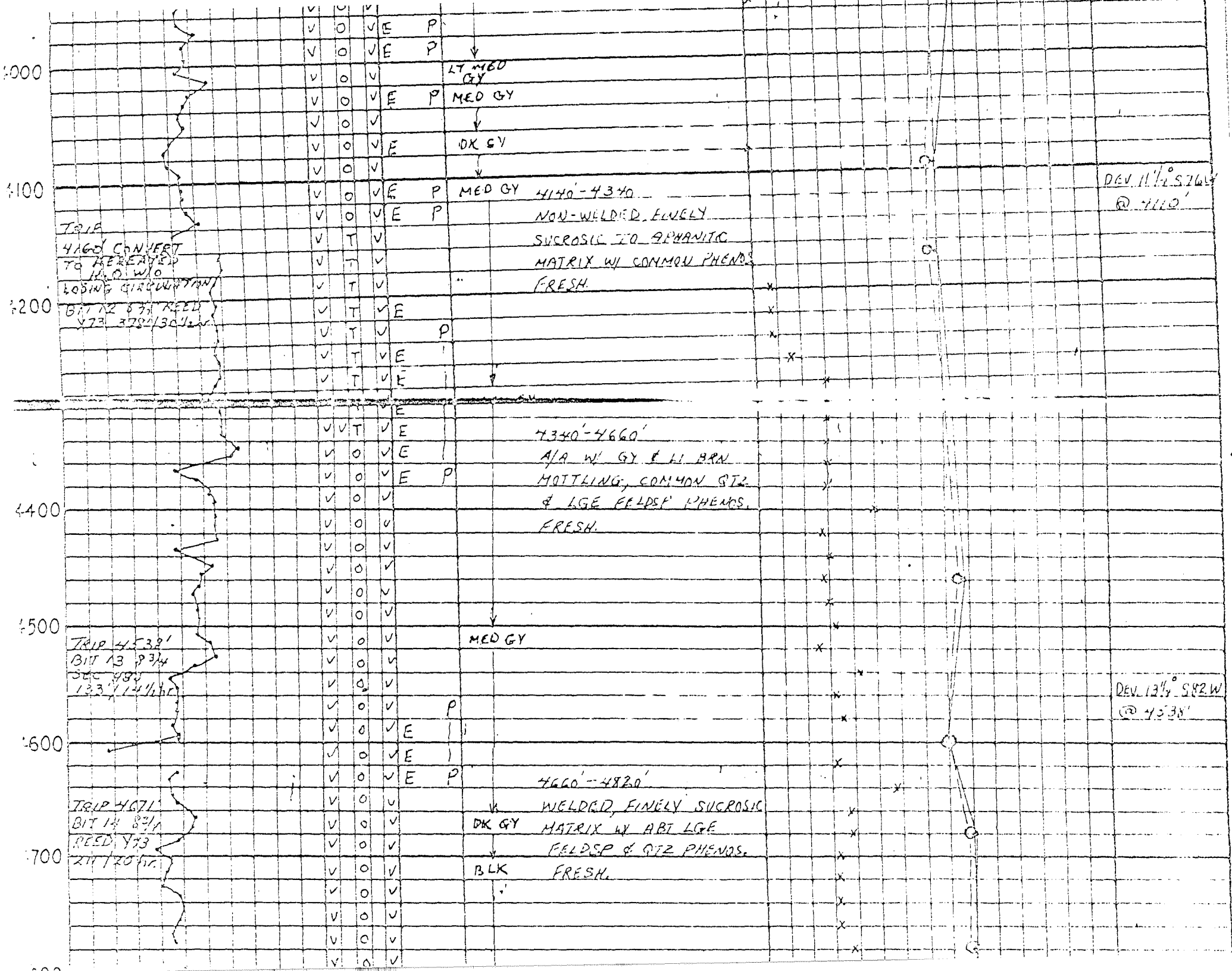
2580' (2580)

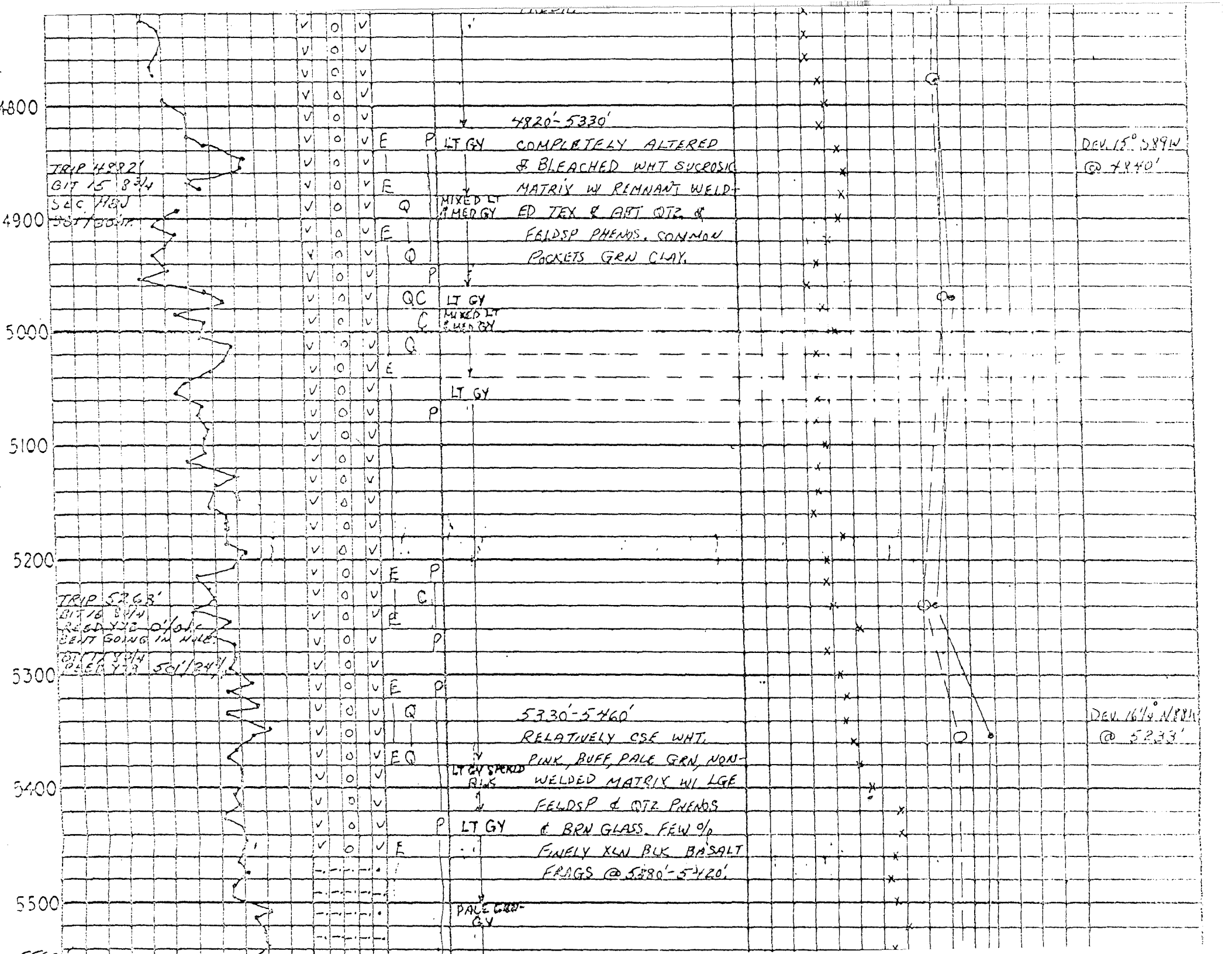
2580' (2580)

2580' (2580)

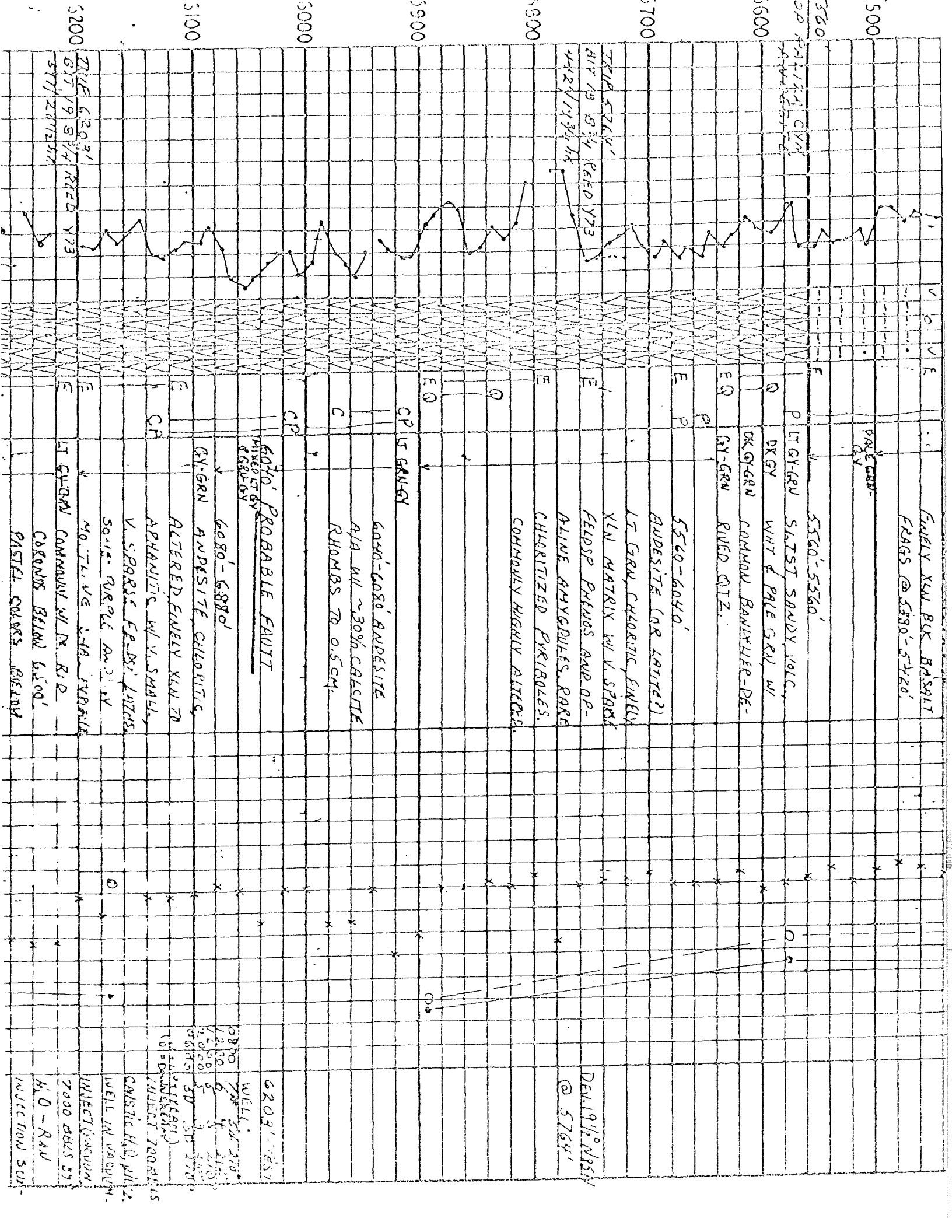
2580' (2580)











FAMILY XENITE BASALT  
FRAGS @ 5780-5720'

5560-5560'

LT GRN SLAGGY VOLC.  
DRGY WHT & PALE GRN W/  
DRGY-GRN COMMON BANQUER-DE-  
GRN RUED QTZ.

5560-6040'  
ANDESITE (OR LATER?)

LT GRN CHLORITIC FINELY  
XLN MATRIX W/ V. SPARSE  
FELDSP PHENOS AND OP-  
PHASE ANHYDRES. PARS  
CHLORITIZED PYRITOLES.  
COMMONLY HIGHLY ALTERED.

6040-6080' ANDESITE  
A/A W/ ~30% CALCITE  
RHOMBS TO 0.5CM.

6080-6880'  
GRN ANDESITE CHLORITIC  
ALTERED FINELY XLN TO  
APHANITIC W/ V. SMALL  
V. SPARSE FELDSP LATHS.  
SOILS: RUPRE. AN. D. V.  
MO. T. V. E. STR. VERDILE.

LI GRN CONNUV W/ R. RD.  
COBOLDS BELW 6100'  
PASTEL COLORS BELW

DEN. 1912-1985  
@ 5764'

WELL @ 5780

WELL @ 5785  
WELL @ 5790  
WELL @ 5795  
WELL @ 5800  
WELL @ 5805  
WELL @ 5810  
WELL @ 5815  
WELL @ 5820  
WELL @ 5825  
WELL @ 5830  
WELL @ 5835  
WELL @ 5840  
WELL @ 5845  
WELL @ 5850  
WELL @ 5855  
WELL @ 5860  
WELL @ 5865  
WELL @ 5870  
WELL @ 5875  
WELL @ 5880  
WELL @ 5885  
WELL @ 5890  
WELL @ 5895  
WELL @ 5900

WELL @ 5764  
INJECTION 500'

7000 FEELS BY  
H<sub>2</sub>O - RAN  
INJECTION SUM-  
VEY. WELL SHUT  
IN 10 HRS - RAN  
STATIC TIP SURVEY  
BLEW WELL FOR  
29 HRS. REC'D  
10,500 BBLs  
FLUID. WELL  
WOULD NOT  
STICK OFF.

LI ST-GRN  
COMMON W/ D. RID  
COARSE BLANK 6800'  
FINEST COARSEST  
6800'

MIXED BK  
LT GY

PK GY

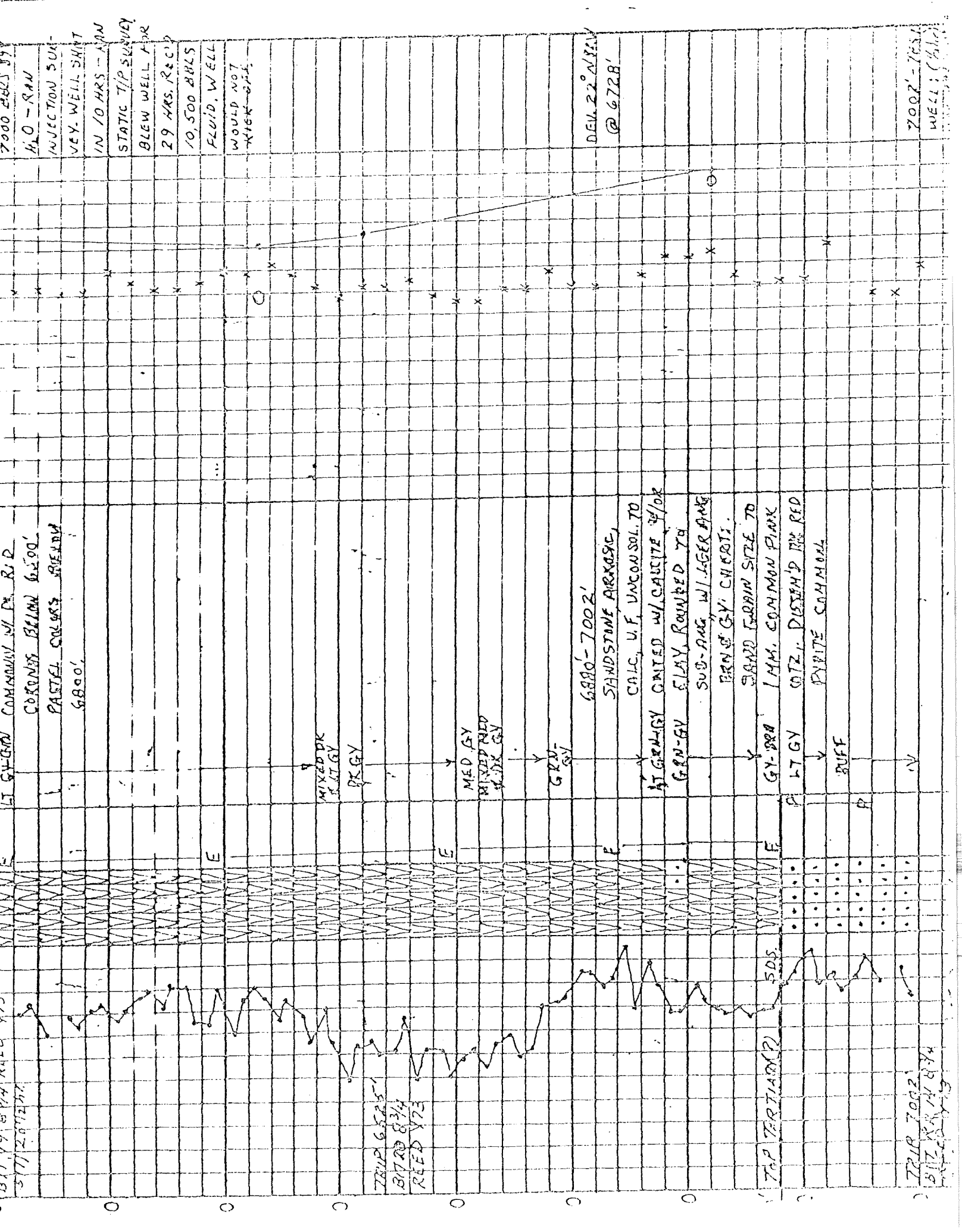
MED GY  
MIXED BK  
SLDK GY

GRD-  
GY

6880'-7002'  
SANDSTONE ARGASSIC,  
CALC. V.F. UNCONSOL. TO  
HT GRN-GY GATED W/ CALCITE 3/4 OR  
GRN-GY E.LAY. ROUNDED TO  
SUB-ANG. W/ LAGER ANG  
BRN GY. CHESTN.  
SAND FERRIN SIZE TO  
GY-BRO IMM. COMMON FINE  
LT GY COZ. P. DISSEM'D BR RED  
PYRITE COMMON

TRIP 7002'  
BLZ 8/14/84

2002'-7051'  
WELL (410)



7000

BIT R R N 874  
CLEAN HALL  
& BRIDGES

T.R. 7002  
V.D. 6827  
BOTTOM HOLE COORDS:  
46.62' S  
130.49' W

W

\*

7002-725  
WELL: (1/11)  
MAX. PRES. V  
UP 2.34 PPM  
TEMP. 91.5  
CIRCUIT 200  
# 50, PUNCH  
WELL & CUT  
W/ BIT TO  
WASH TO  
BOTTOM

FINAL TEST  
167-4530-2-21 24  
167-4530-2-21 24  
CALORIDES 3200 PP

7100

7200

7300

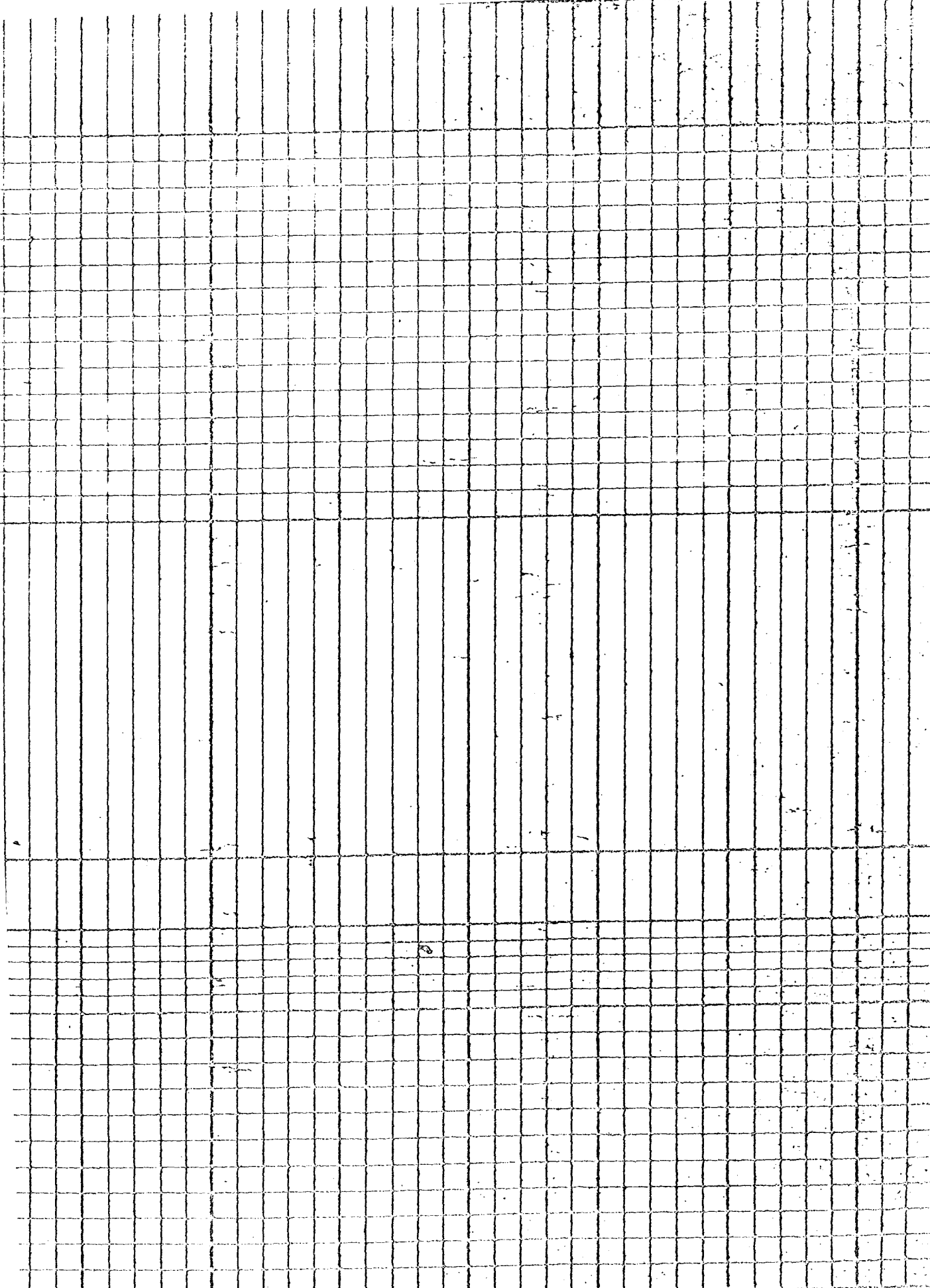
7400

7500

7600

7700

7800



7700

7800

7900

8000

8100

8200

8300