

COMPANY UNION OIL OF CALIF.
 FIELD BACA
 WELL #6
 COUNTY SANDOVAL
 STATE NEW MEXICO
 LOCATION REDONDO CREEK
 EL. ~ 8700'

TOTAL DEPTH 3715'
 SPUD DATE JULY 8 1972
 COMPLETION DATE JULY 23, 1972
 DRILLING CONTRACTOR Colman-Andes
 ENGINEER Harrell
 GEOLOGIST Dondanville

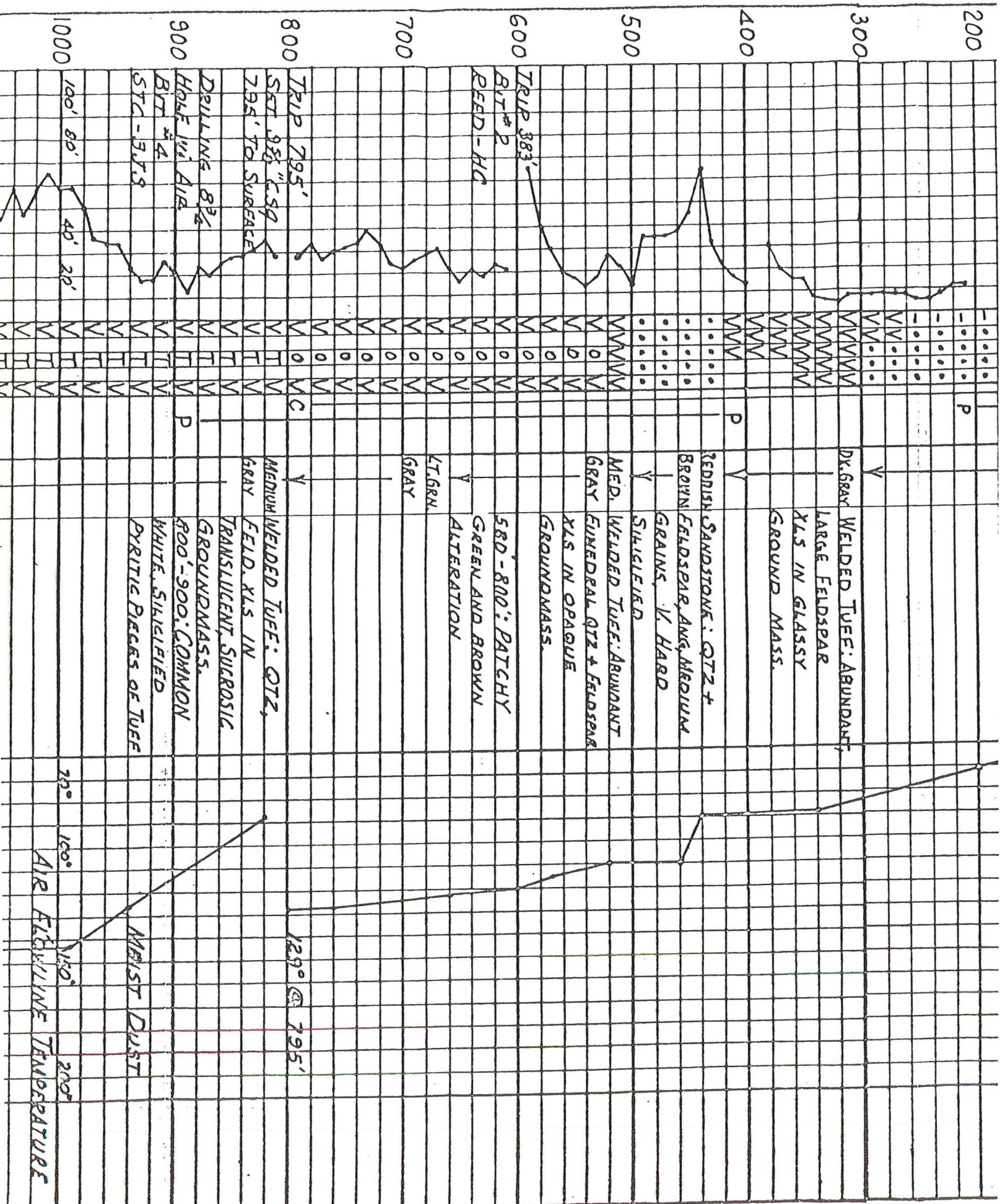
CASING RECORD
9 5/8" : 795' to SURFACE
7" LINER: HUNG 692' to
3700', SLOTTED: 2639'-2710'
2980'-3126'
3589'-3699'

EXPLANATION

DRILLING	ROCK	MINERALS	PHYSICAL - CHEMICAL
NB - NEW BIT	☐ SHALE	☒ CHERT	D.H.-DOWN HOLE
RRB - RERUN BIT	☐ SILTSTONE	☒ VOLCANICS	B.H.-BOTTOM HOLE
CB - CORE BIT	☐ SANDSTONE	☒ INTRUSIVE	F.L. FLOW LINE
LC - LOST CIRCULATION	☐ CONGLOMERATE	☒ TUFF	T. TEMPERATURE
DEV - DEVIATION	☐ LIMESTONE	☒ METAMORPHIC	P. PRESSURE
OST - DRILL STEM TEST	☐ DOLOMITE	☐ _____	T.C. TIME SINCE CIRCULATION
	☐ GYP, ANHYD.	☐ _____	W.H. WELL HEAD

TUFF GROUNDMASS: OPAQUE (O), TRANSLUCENT (T)

DEPTH	PENETRATION DATA					LITHOLOGY				PHYSICAL-CHEMICAL DATA				MISC.
	□ FT./HR.		□ MIN./FT. 10'			PRIMARY LITH	SECONDARY MINERALS	BULK COLOR	DESCRIPTION	MUD FLOWLINE TEMPERATURE				
	30	70	50	30	10					100%	0	70°F	100°	
	DRILLING 12 1/4" HOLE WITH MUD BIT #1 HTC-RR								BRICK MUDSTONE, MINOR RED + SANDSTONE, SOFT, VARIOUS ARGILLIZED GRAYS					
100									L.T. GRAY SANDSTONE, ANG. Volc. GRAINS, BIPYRAMIDAL QZ XLS, CLAYEY, ALTERED					
200							P							
300								Y	DK. GRAY WELDED TUFF: ABUNDANT, LARGE FELDSPAR XLS IN GLASSY GROUND MASS.					

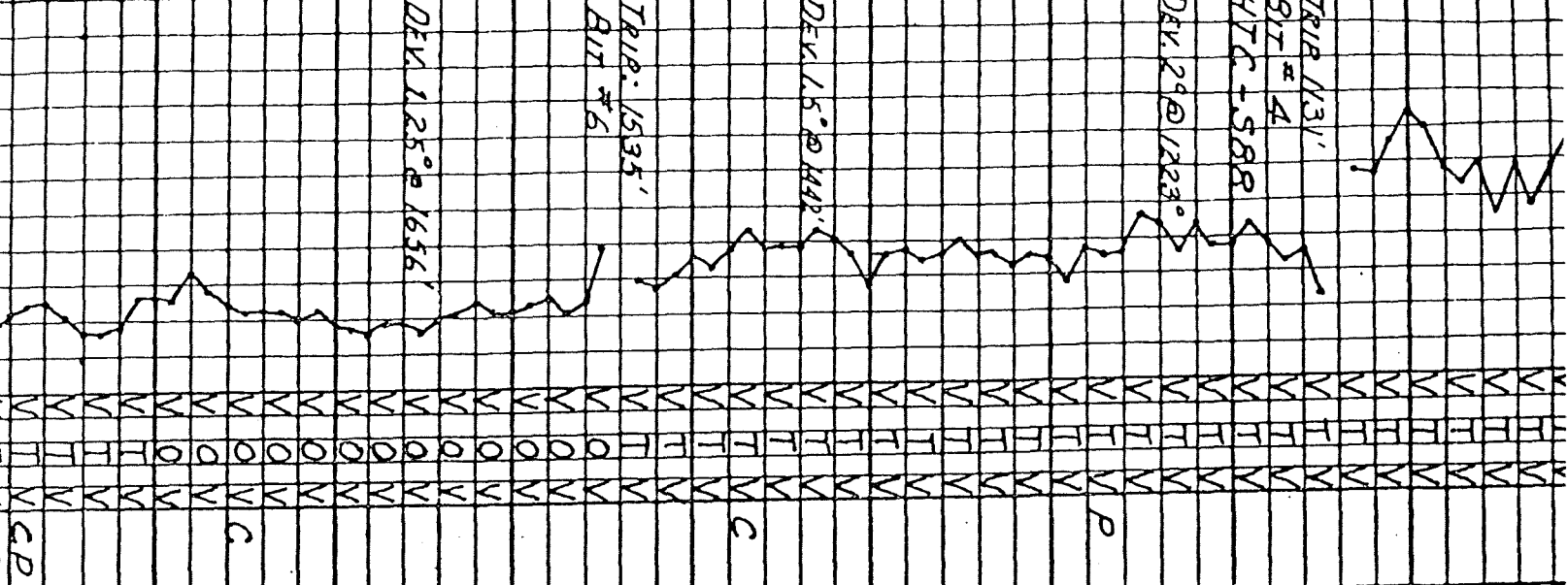


79.5

NEAREST DUST

AIR BOREHOLE TEMPERATURE

1100
1200
1300
1400
1500
1600
1700
1800



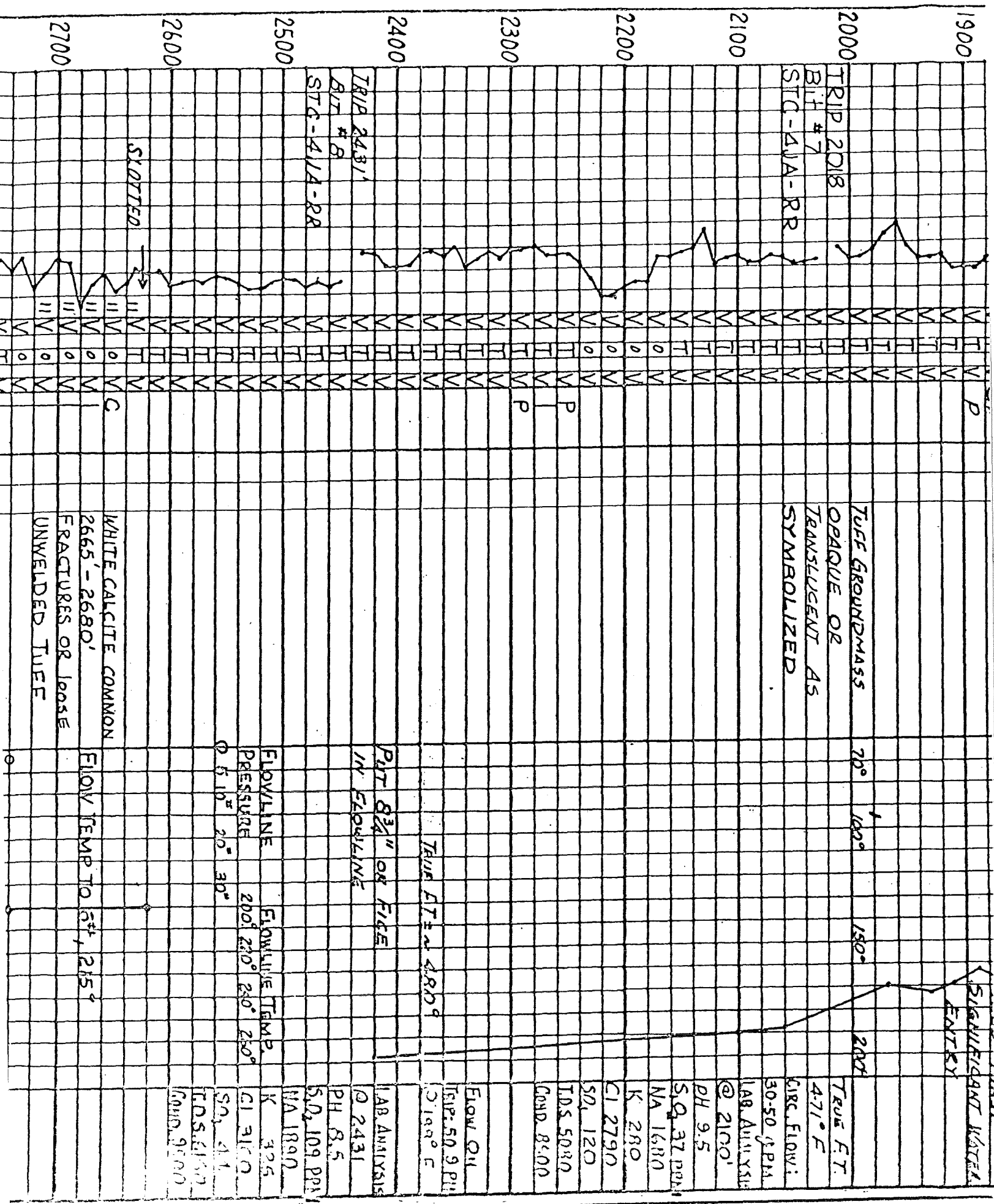
WELDED TUBE,
OPAQUE GROUNDMASS

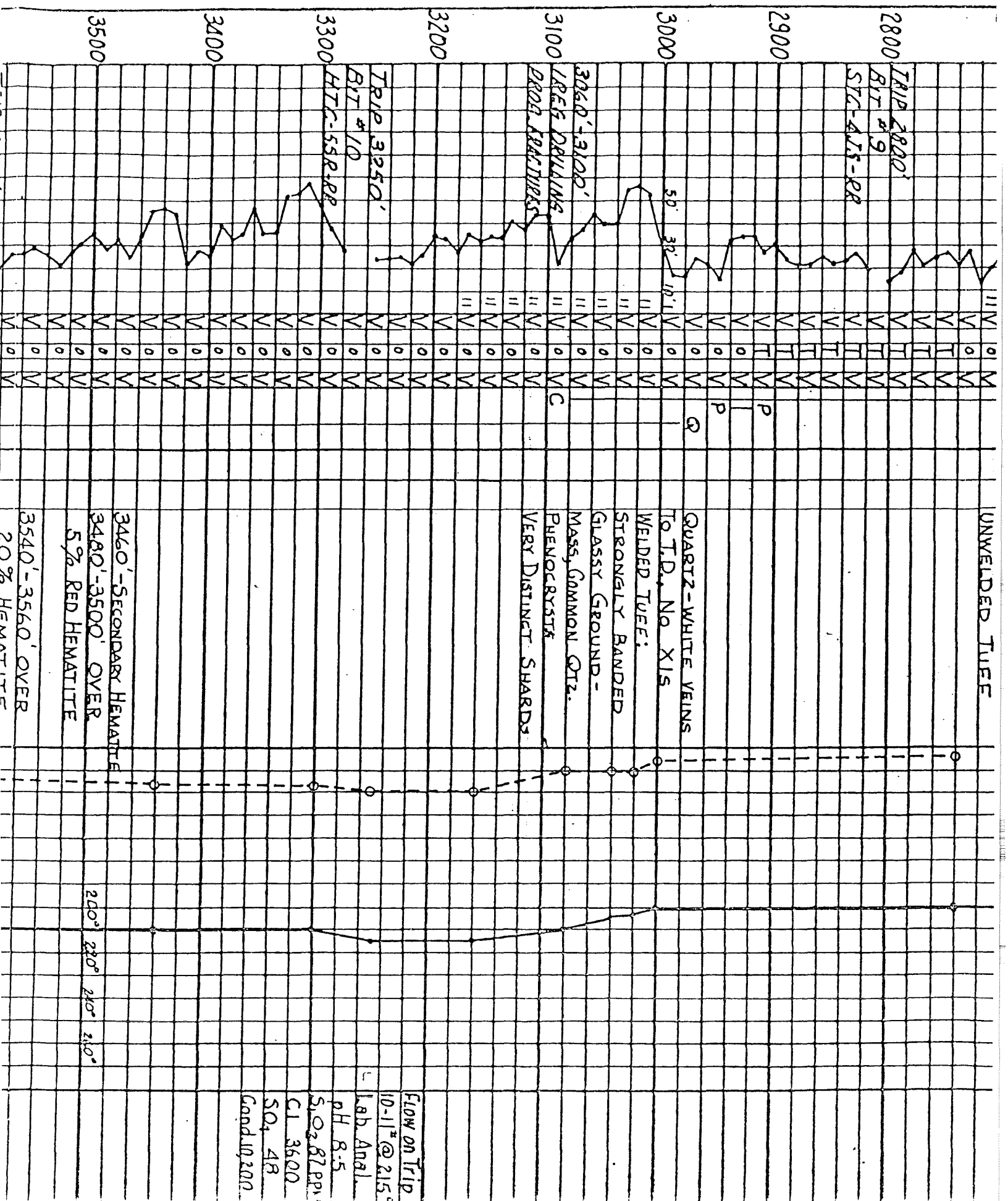
MOIST DUST

SLIGHT WATER
VAPOR

WATER VAPOR

IRAD. 15.00





2800 TRIP 2800'
 BIT #9
 STC-415-R8

2900

3000

3100

3200

3300

3400

3500

UNWELDED TUFF

QUARTZ-WHITE VEINS
 TO T.D., No X15

WELDED TUFF:

STRONGLY BANDED
 GLASSY GROUND-

MASS, COMMON QTZ.
 PHENOCRYSTS

VERY DISTINCT SHARDS

Flow on Trip
 10-11" @ 215°
 Lab. Anal.

PH 8.5
 SiO₂ 87 ppm
 Cl 3600
 SO₄ 48
 Cond. 10,200

3460' - SECONDARY HEMATITE

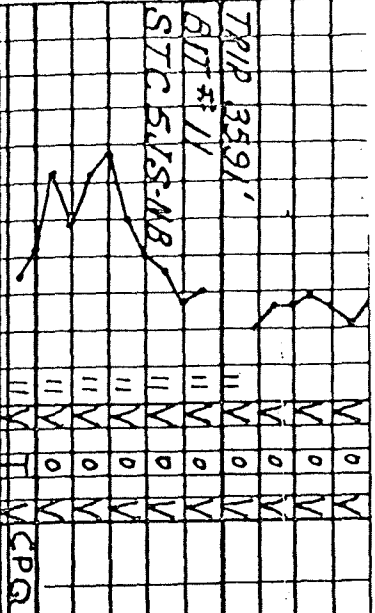
3480' - 3500' OVER
 5% RED HEMATITE

3540' - 3560' OVER
 20% HEMATITE

200° 230° 240° 210°

3600

TRIP 3591'
ADT #11
STC 515-NB



3540'-3560' OVER
20% HEMATITE
3560'-T.D. LITTLE
TO NO HEMATITE

Qtz-rich
2920 - T.D.

Y

275°

PARTIAL

LAR ANALYSIS

OF FLASHET

WATER:

SiO₂ 270 pp

Ca 2

Na 1640

K 370

Cl 2860

SO₄ 32

TDS 5800

COND. 7300

3700
3715
T.D.

NOTE: AETER RUNNING
SLOTTED 7" LINER.
FLOW DROPPED TO
16# @ 242°F
REPRESENTATIVE
TEMPERATURE SURVEY
10-5-72 STATIC 4 WEEKS
DEPTH TEMPERATURE

1000'	441°F
2000'	471°
2600'	487°
2700'	491°
2800'	495°
2900'	496°
3000'	502°
3100'	507°
3200'	512°
3300'	514°
3400'	517°
3500'	518°
3600'	523°
3690'	525°