

COMPANY UNION OIL CO. OF CAL.
 FIELD BACA
 WELL #9 AND #9-Redrill
 COUNTY SANDOVAL
 STATE NEW MEXICO
 LOCATION REDONDO CREEK
EL 8640' (Approx.)

TOTAL DEPTH #9: 3518' T.D.
#9-RD: 2440'-5303' T.D.
 SPUD DATE SEPT. 15, 1972
 COMPLETION DATE Nov. 21, 1972
 DRILLING CONTRACTOR COLEMAN & Aude's
 ENGINEER HARREL
 GEOLOGIST DONDANVILLE

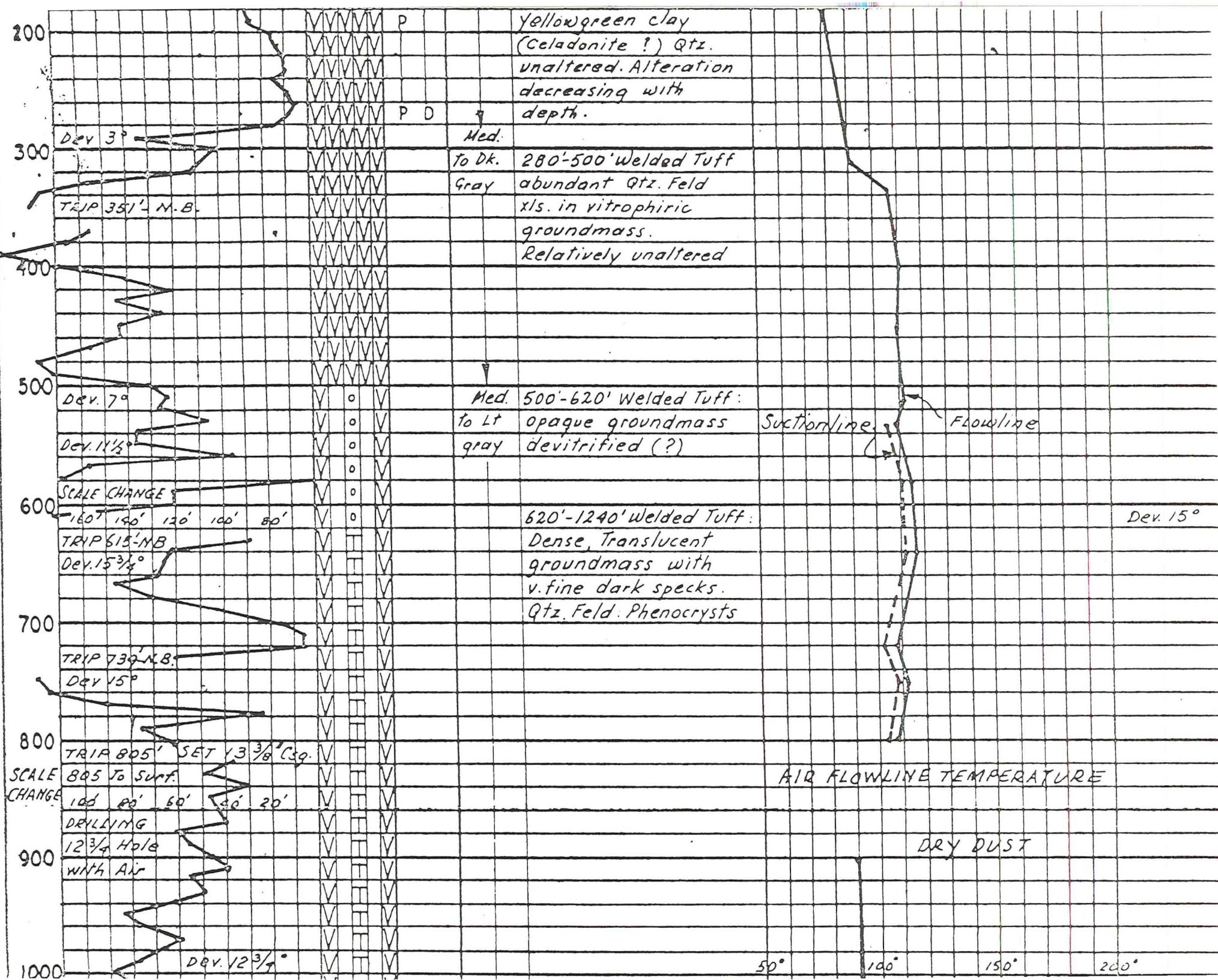
#9: CASING RECORD
13 3/8": 805' to Surface Cemented
#9-RD.:
9 5/8": 3600' to 385'
Abandoned with bridge plug
2795' cement to 2390'
Bridge plug 468', plus cement.

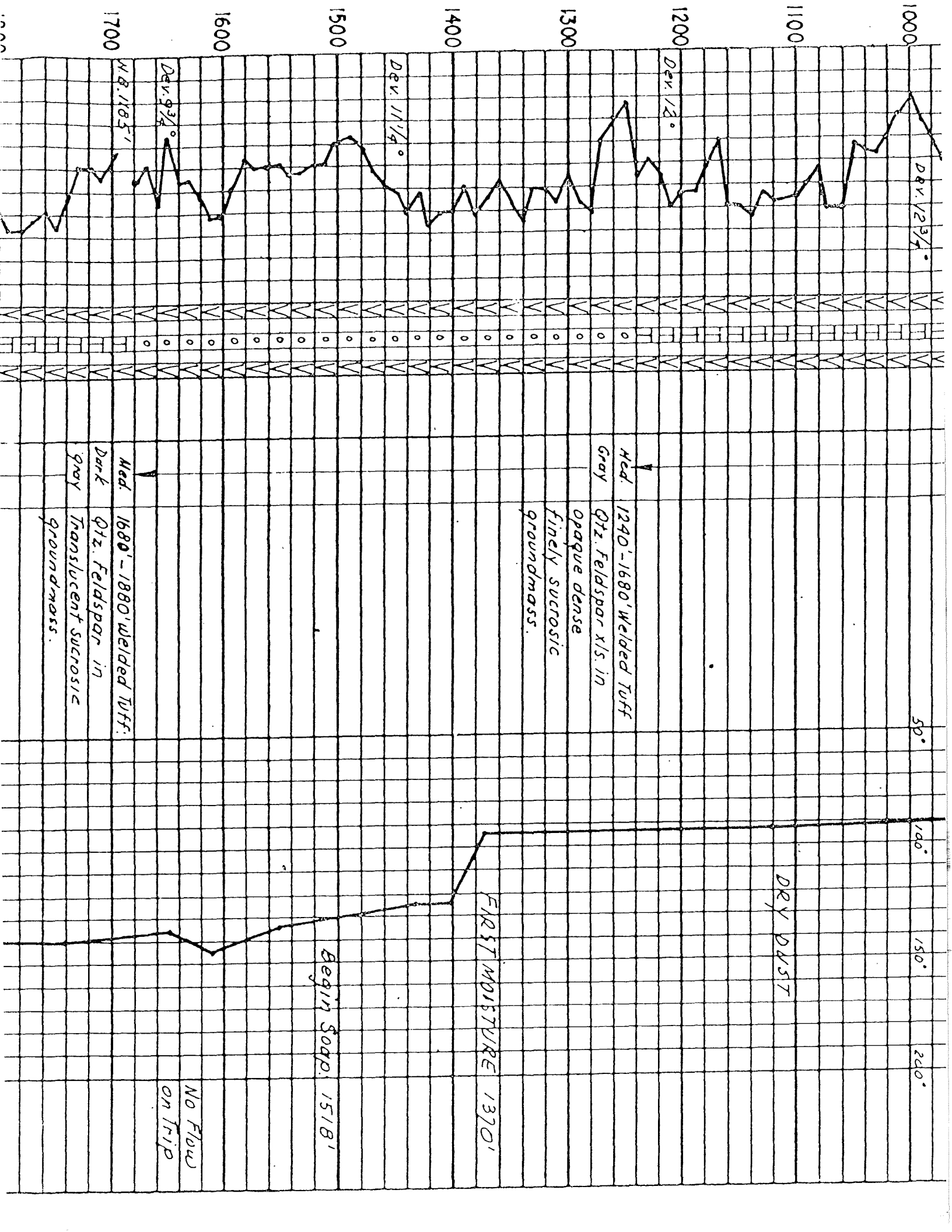
EXPLANATION

DRILLING	ROCK	MINERALS	PHYSICAL - CHEMICAL
NB - NEW BIT	☐ SHALE	☐ CHERT	D.H.-DOWN HOLE
RRB - RERUN BIT	☐ SILTSTONE	☑ VOLCANICS	PPM - PARTS PER MILLION
CB - CORE BIT	☐ SANDSTONE	☒ INTRUSIVE	B.H.-BOTTOM HOLE
LC - LOST CIRCULATION	☐ CONGLOMERATE	☑ TUFF	F.L FLOW LINE
DEV - DEVIATION	☐ LIMESTONE	☒ METAMORPHIC	T. TEMPERATURE
DST - DRILL STEM TEST	☒ DOLOMITE	☐ _____	P. PRESSURE
	☒ GYP, ANHYD.	☐ _____	T.C. TIME SINCE CIRCULATION
		F - FELDSPAR	W.H. WELL HEAD

Tuff Groundmass: Opaque (O) Translucent (T)

DEPTH	PENETRATION DATA					LITHOLOGY				PHYSICAL - CHEMICAL DATA				MISC.	
	MIN/10 FEET					PRIMARY LITH	SECONDARY MINERALS	BULK COLOR	DESCRIPTION	MUD	FLOWLINE		TEMPERATURE		
	FL/HR	100	80	60	40						20	50°	100°		150°
						•••••		Brown	0'-80': Sand & Gravel						
						•••••			mostly weathered						
						•••••			Tuff						
100						∩∩∩∩∩		LT. Gray							
						∩∩∩∩∩		with	80'-280' Welded Tuff						
						∩∩∩∩∩		yellow	Qtz, feldspar xls in						
						∩∩∩∩∩		specks	bleached groundmass.						
						∩∩∩∩∩	D		Feldspars altered to						
200						∩∩∩∩∩	P		yellow green clay						
						∩∩∩∩∩			(Celadonite?) Qtz.						
						∩∩∩∩∩			unaltered. Alteration						
						∩∩∩∩∩			decreasing with						
						∩∩∩∩∩	P D		depth.						
300						∩∩∩∩∩		Med.							
						∩∩∩∩∩		To DK.	280'-500' Welded Tuff						
						∩∩∩∩∩		Gray	abundant Qtz. Feld						





Dev. 1/2 3/4 °

Dev. 1/2 °

Dev. 11 1/4 °

Dev. 9 3/4 °

N.B. 1185'

50'

100'

150'

200'

DRY DUST

1370' FIRST MOISTURE

1518' Begin Soap.

No Flow on Trip

Med. 1240' - 1680' Welded Tuff

Gray Qtz. Feldspar xls in

opaque dense

finely sucrosic

groundmass.

Med. 1680' - 1880' Welded Tuff.

Dark Qtz. Feldspar in

gray Translucent sucrosic

groundmass.

1700

1600

1500

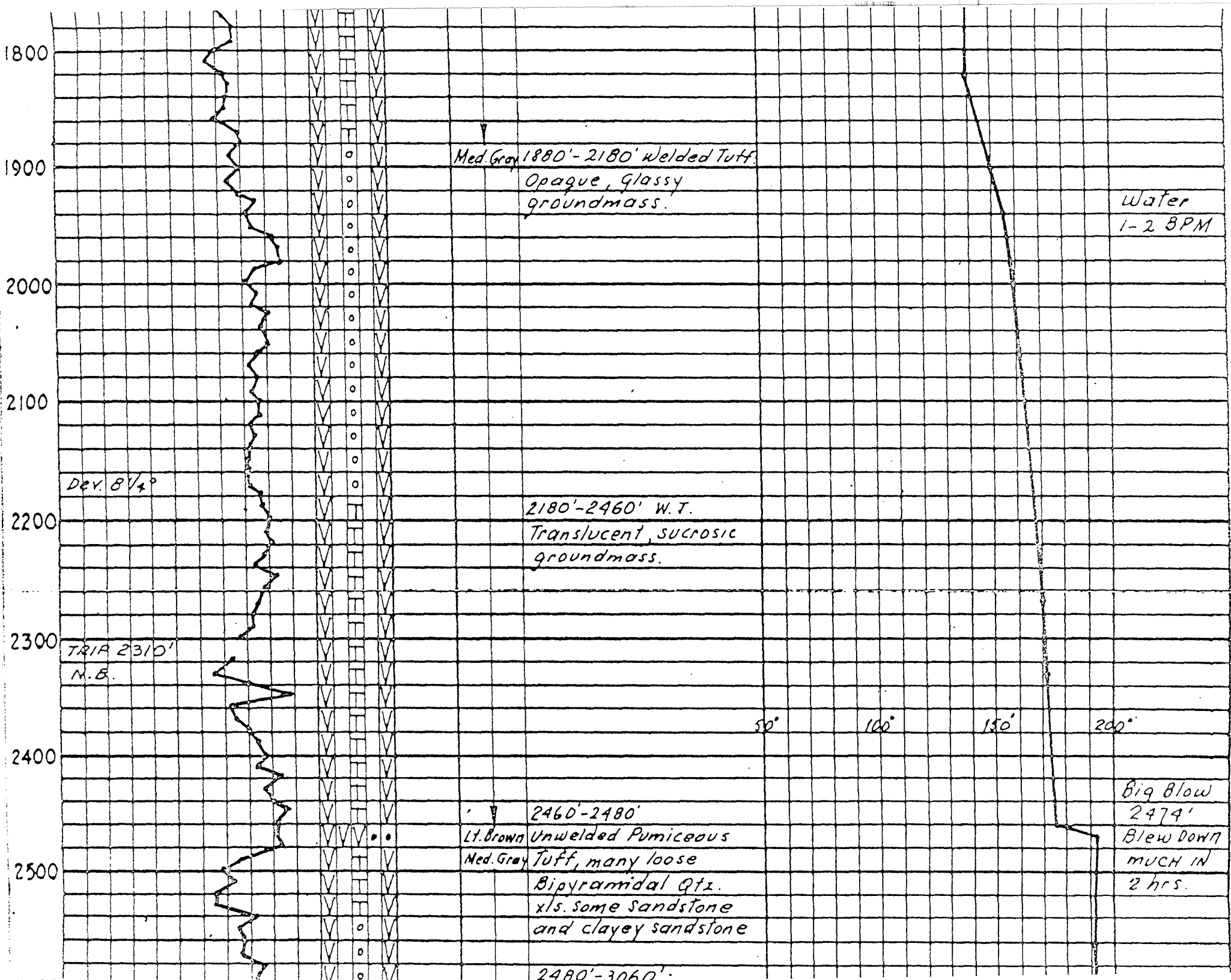
1400

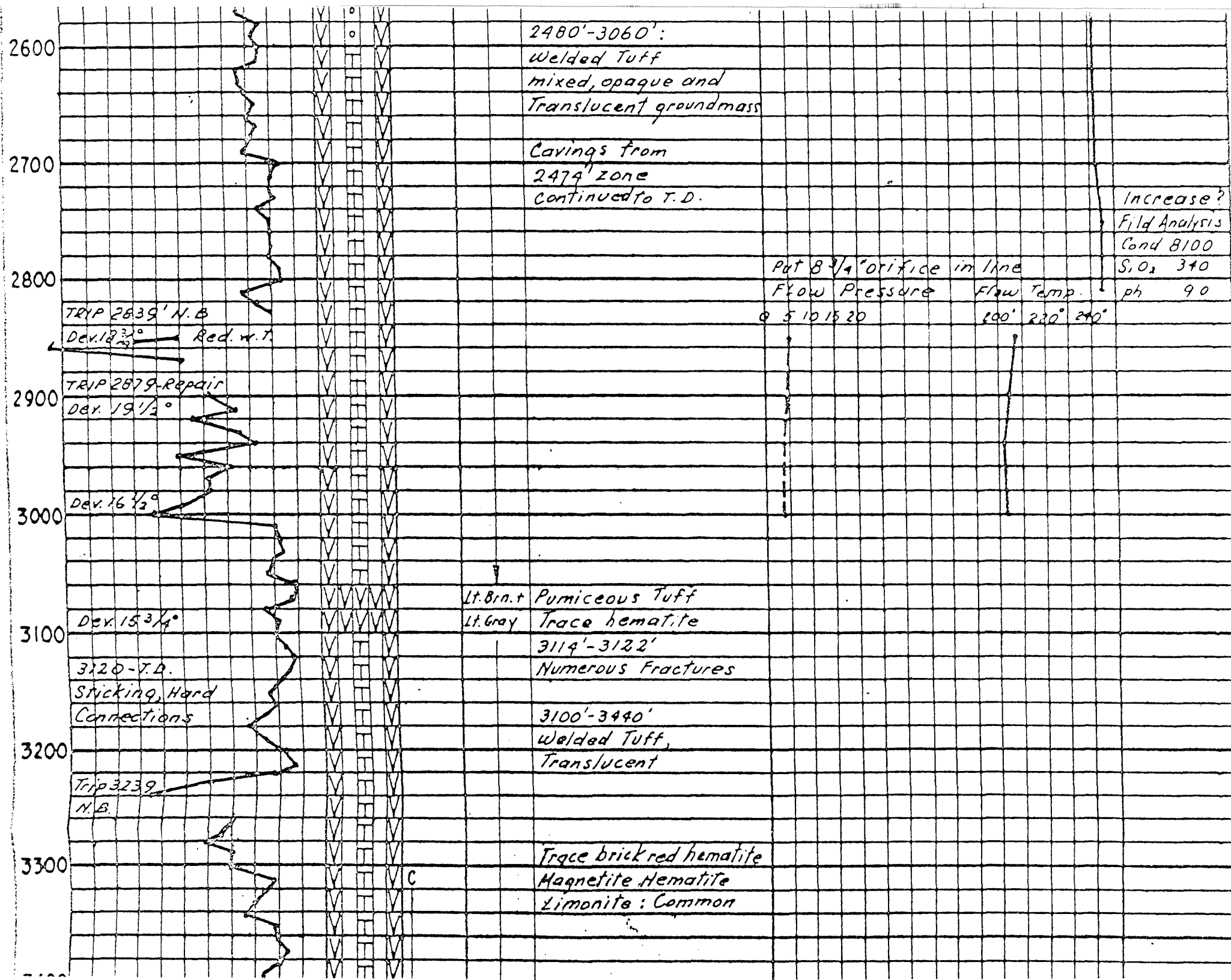
1300

1200

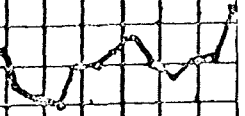
1100

1000





3400



3500

Med Gray 3440'-3519' Welded Turf
 + Creamy Abundant Qtz. x/s. and
 Tan Lesser Feldspar in
 opaque, glassy,
 banded groundmass

3519 Sticking Body
 dug-up for casing,
 stack

Redill at 2490'

NO L.C.M. NEEDED

BACA #9-REDRILL

2400

DRILLING LOG
 HOLE WITH AIR

Very slow to
 make new hole

2500

TRIP 2595'

lt gray shardy structure

2600

Dev. 9'

Med Gray Welded Turf Translucent

BULK SAMPLE DESCRIPTION

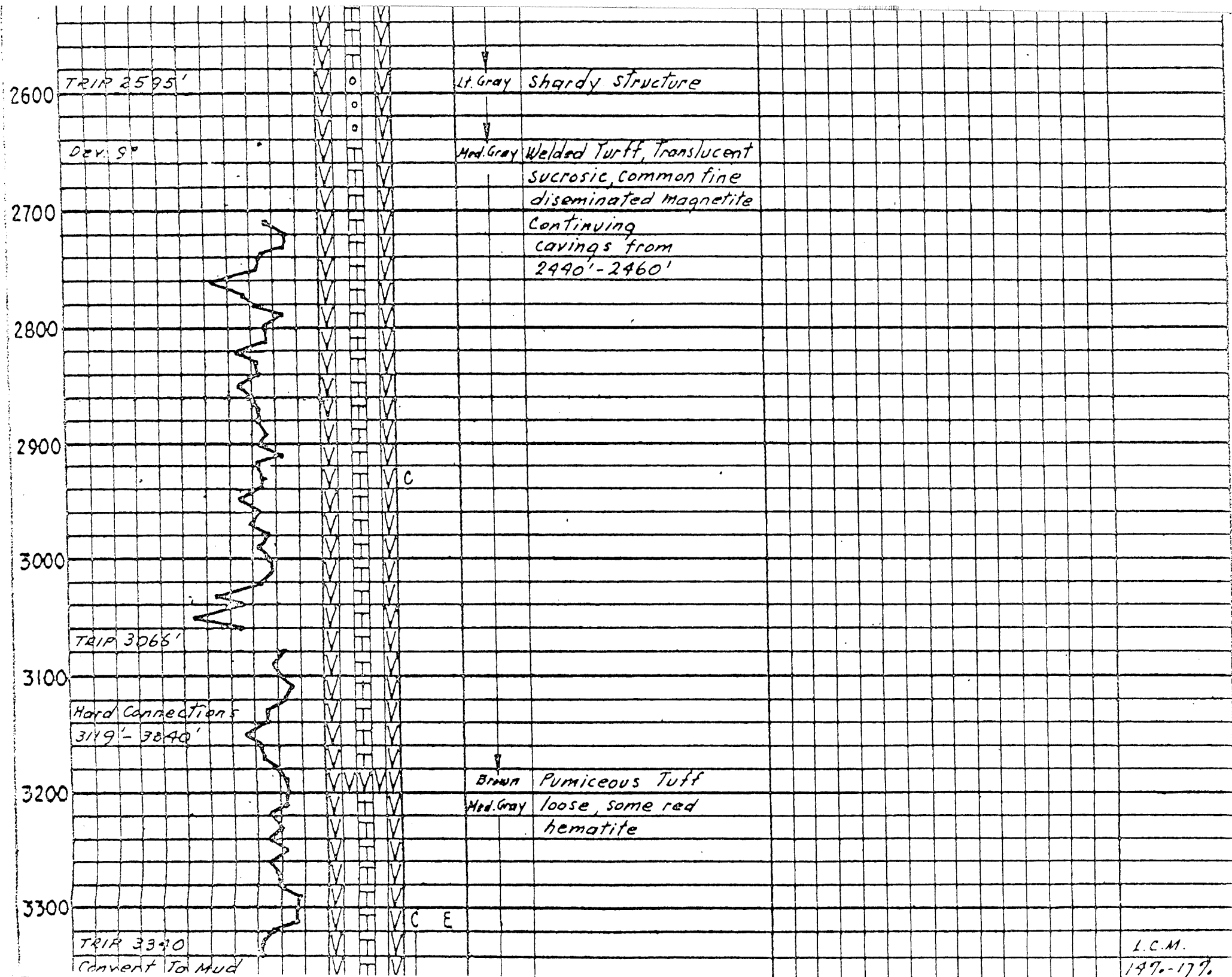
AIR FLOWING PRESSURE TEMPERATURE

5.10.15.30

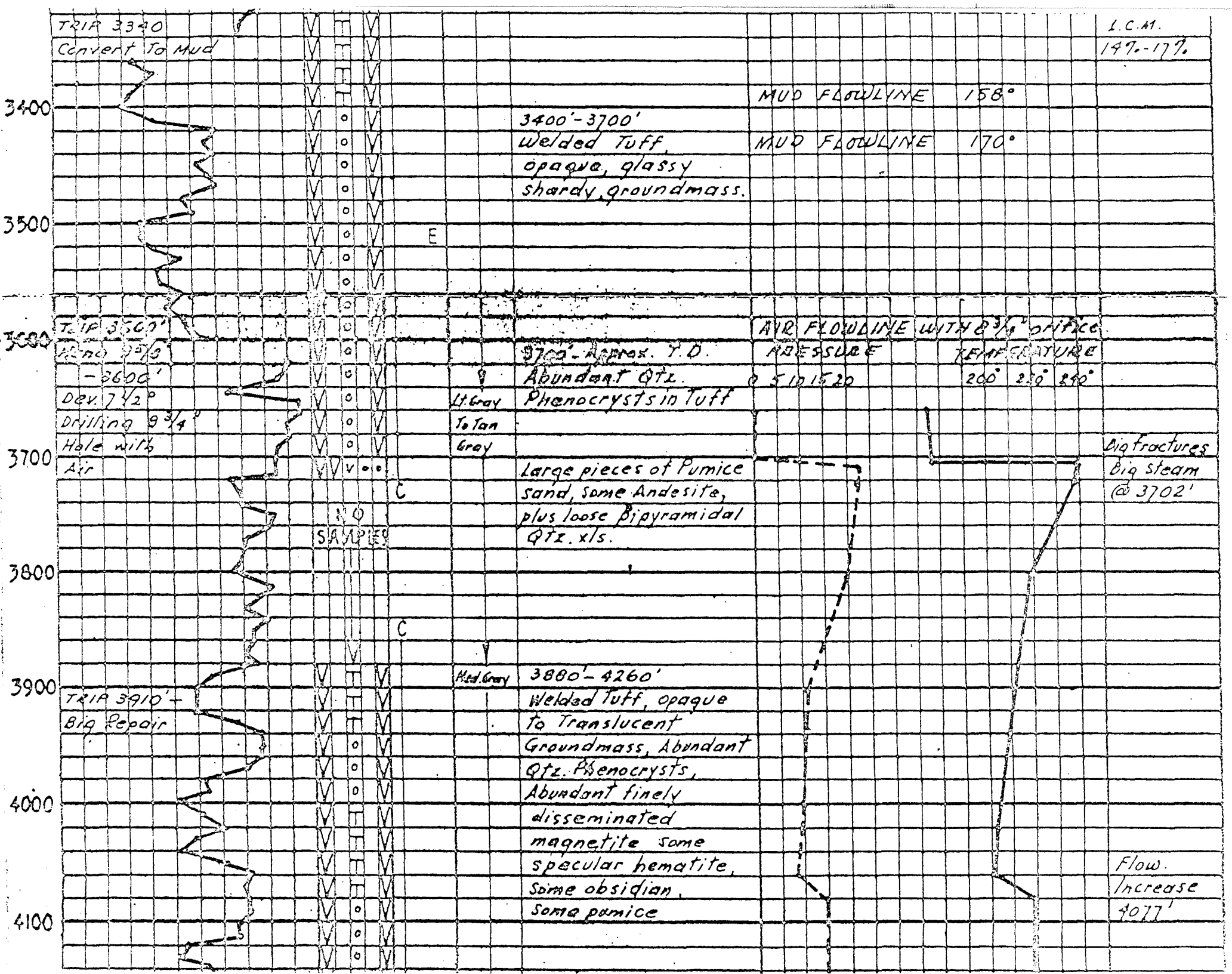
280° 130° 240°

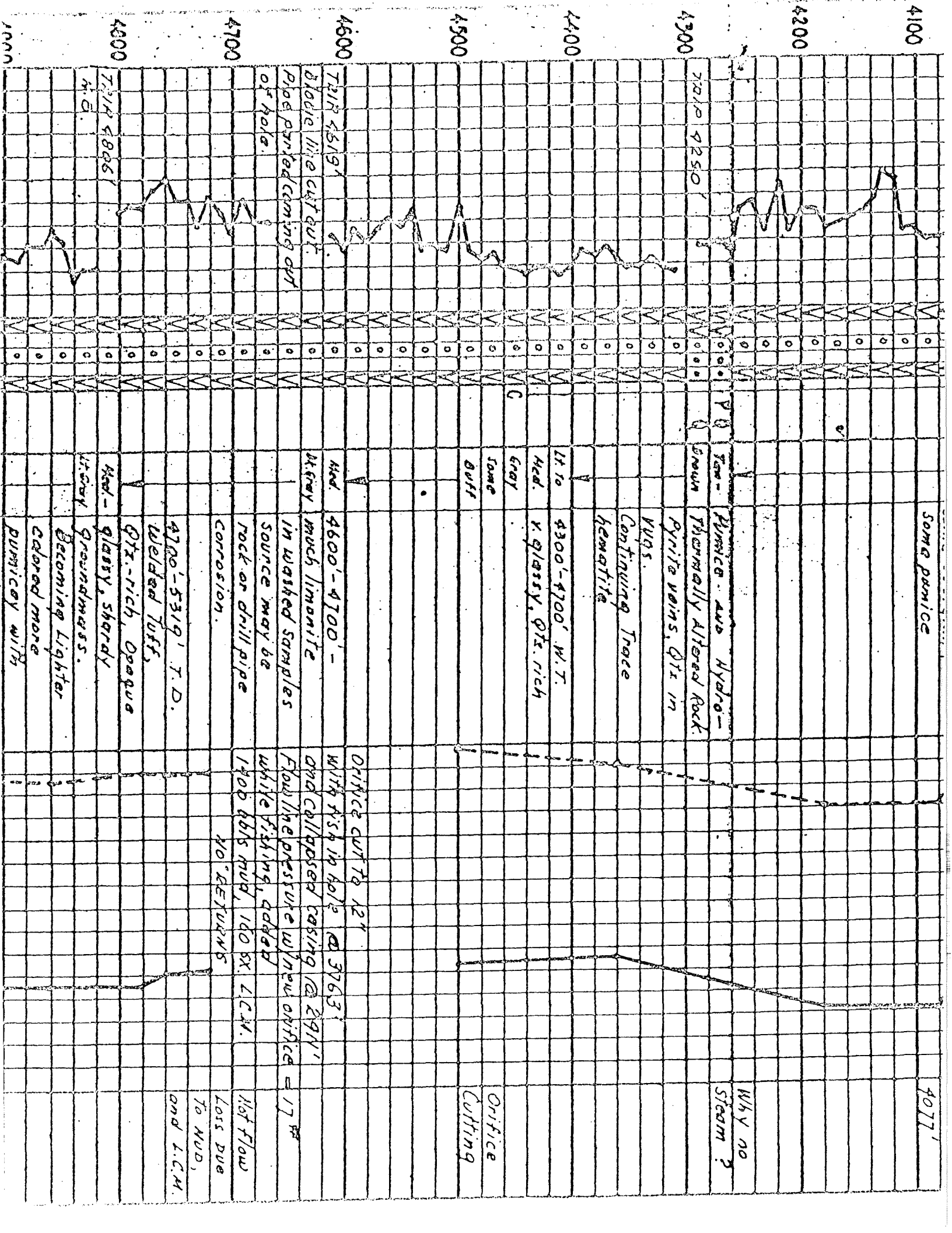
Amiceous Turf

Med Gray Loose, light gray
 to dirty brown



L.C.M.
199-179.





Some porphice

4077'

Why no
Steam?

Porphyritic and Hydro-
thermally altered rock.

Pyrite veins, Qtz in
vugs.

Continuing trace
hematite

lt to 4300'-4700' W.T.

Med. x glassy, Qtz. rich

gray

Some
buff

Orifice
cutting

Drill pipe cut to 121'

with 4 5/8" ID hole @ 3763'

and collapsed casing @ 291'

Flow line pressure w/ new orifice = 17 psf

white fishing, added

1400 lbs mud, 160 bx L.C.M.

NO RETURNS
Loss due
to mud,
and L.C.M.

4700'-5319' T.D.

welded lifts,

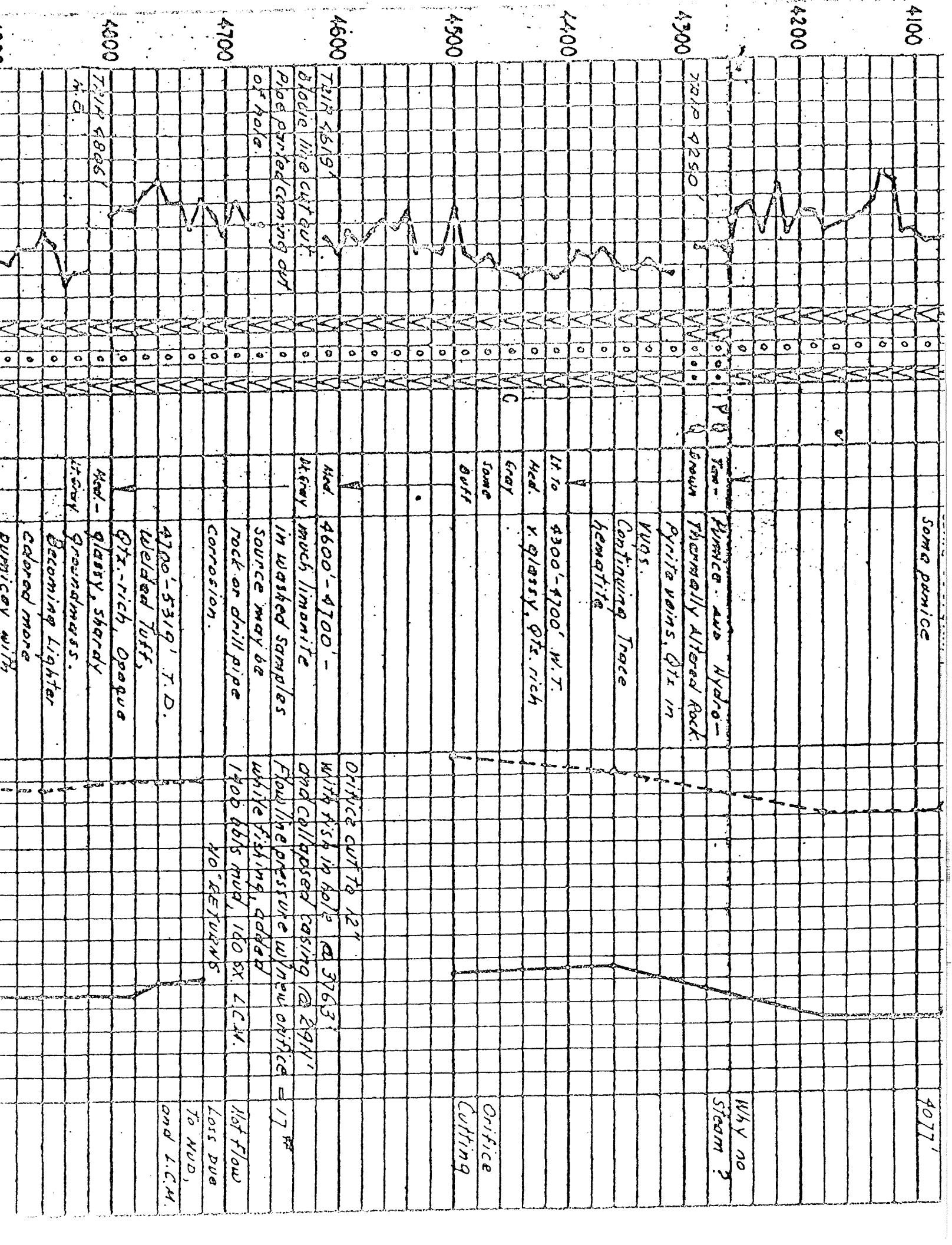
Qtz-rich, opaque

Med - glassy, shaly

gray groundmass.

Becoming lighter
colored more

porphyritic with



4.6

Grey

Groundmass.
Becoming lighter
colored more
pumicey with
depth

4900

5000

Flow line.
at 5000' p

5100

Light
Tuff
Trace
Pink

Groundmass has
porcellan
appearance.

5200

TRAIL 5221'
HYDRONS OFF

5300
T.D.

TRAIL 5303'
/ Cone off
Stack going in
hole @ 4800'
Hole in surface
casing
Well abandoned

