

COMPANY: CHEVRON U.S.A., INC.
WELL: BEOWAWA 85-18
FIELD: BEOWAWA GEYSERS
COUNTY: LANDER STATE: NEVADA

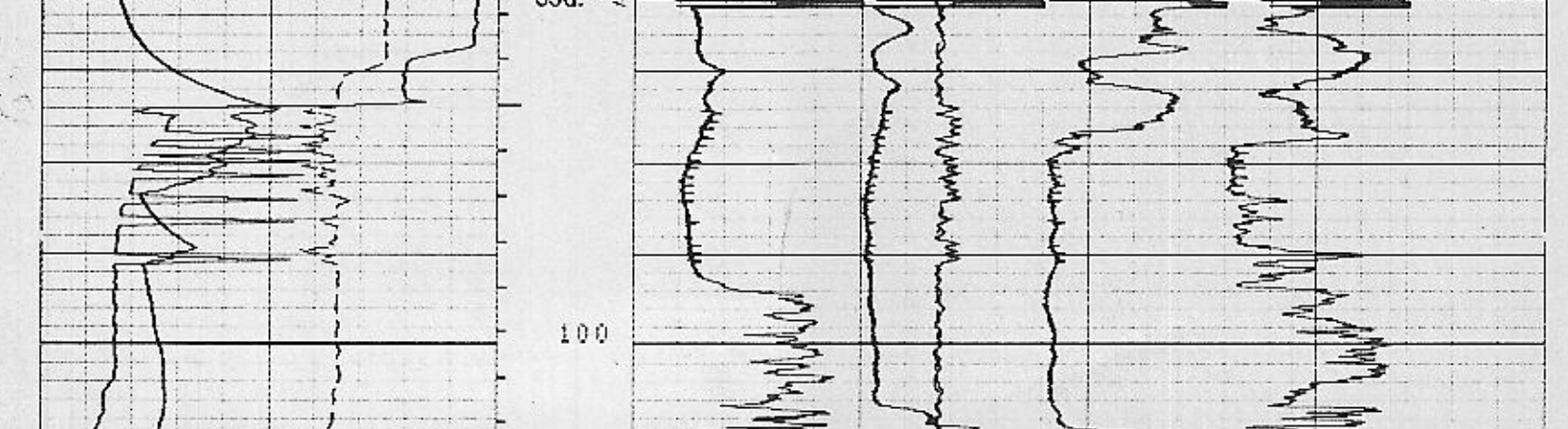
LOG MEASURED FROM: K.B.
DATE: 01-20-80
DIPMETER NO.: 18
CALIBRATION NO.: 18
DIPMETER NO.: 18
CALIBRATION NO.: 18

LOG MEASURED FROM: K.B.
DATE: 01-20-80
DIPMETER NO.: 18
CALIBRATION NO.: 18
DIPMETER NO.: 18
CALIBRATION NO.: 18

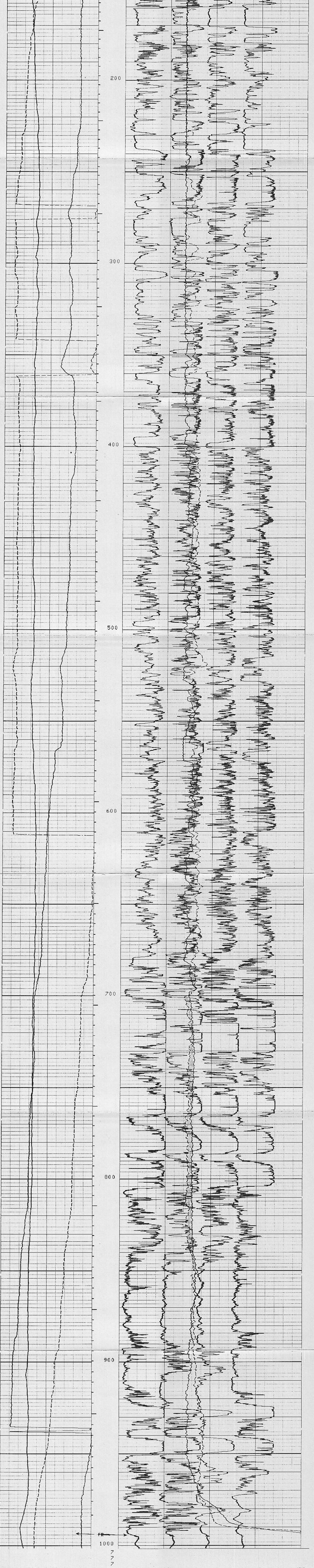
REMARKS: Service Order No: 123942
Magnetic Declination: 17°
TIME STARTING IN HOLE: 3:30
TIME OUT OF HOLE: 04:55
ROLL NO. INTERVAL

Tool Type	HDT-D	1	2	3	4	ROLL NO.	INTERVAL
DDP	TTR	-	-	-	-		
DDM	F	1726					
HDE	CB	1779					
HDS	D	1752					

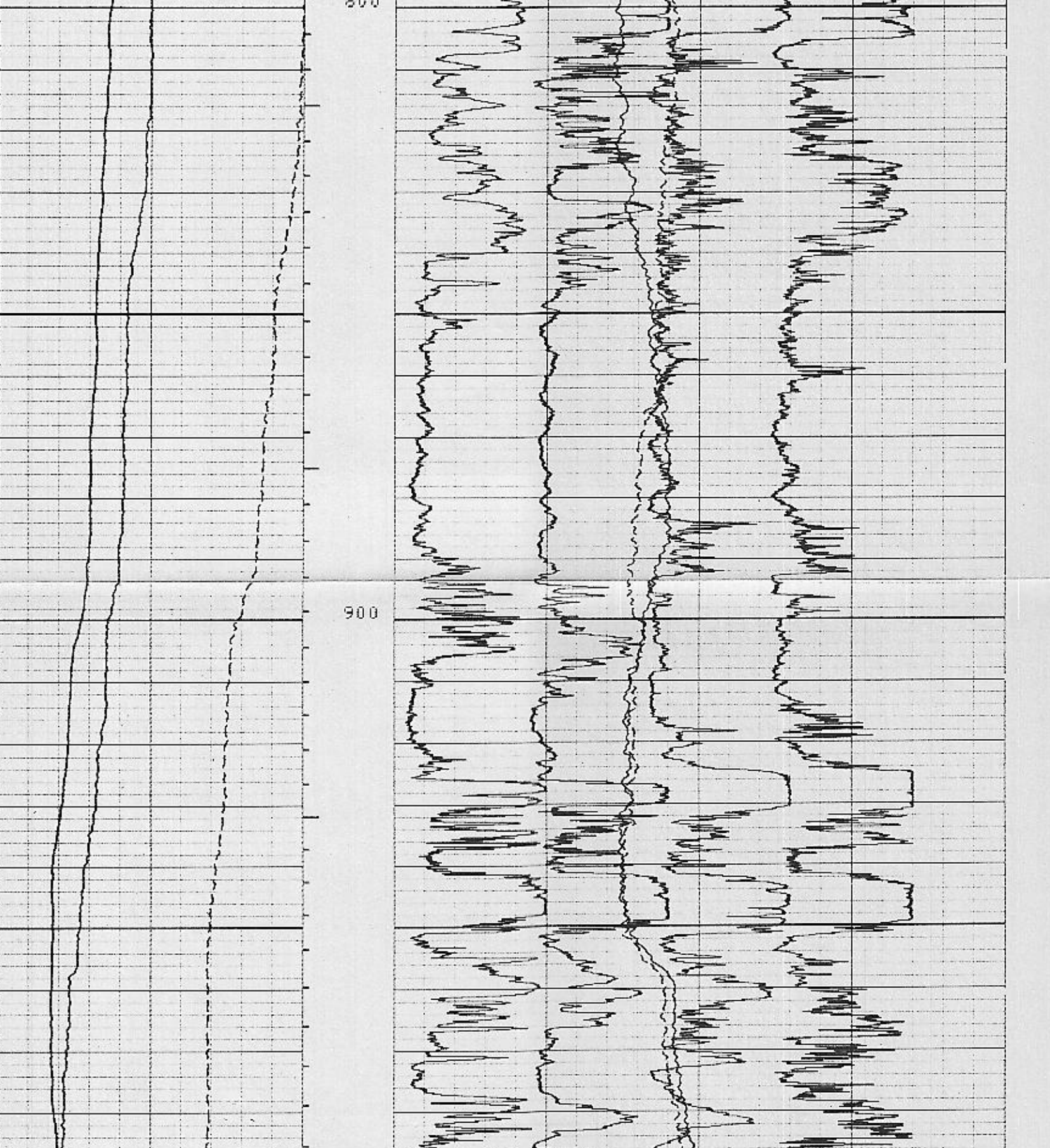
TOOL AZIMUTH AND HOLE DIRECTION CALCULATION
 (HDI) HIGH SIDE OF TOOL = Direction from center of tool to upper side of tool. (AZI) AZIMUTH OF REFERENCE ELECTRODE = Clockwise angle from N to REF.
 (RN) NORTH = Direction from center of tool to Magnetic North. (RBR) RELATIVE BEARING = Clockwise angle from HDI to REF.
 (REF) REFERENCE ELECTRODE = Direction from center of tool to #1 electrode. (AMD) AZIMUTH OF HOLE DEV. (TOOL AXIS) = Clockwise angle from N to HDI.



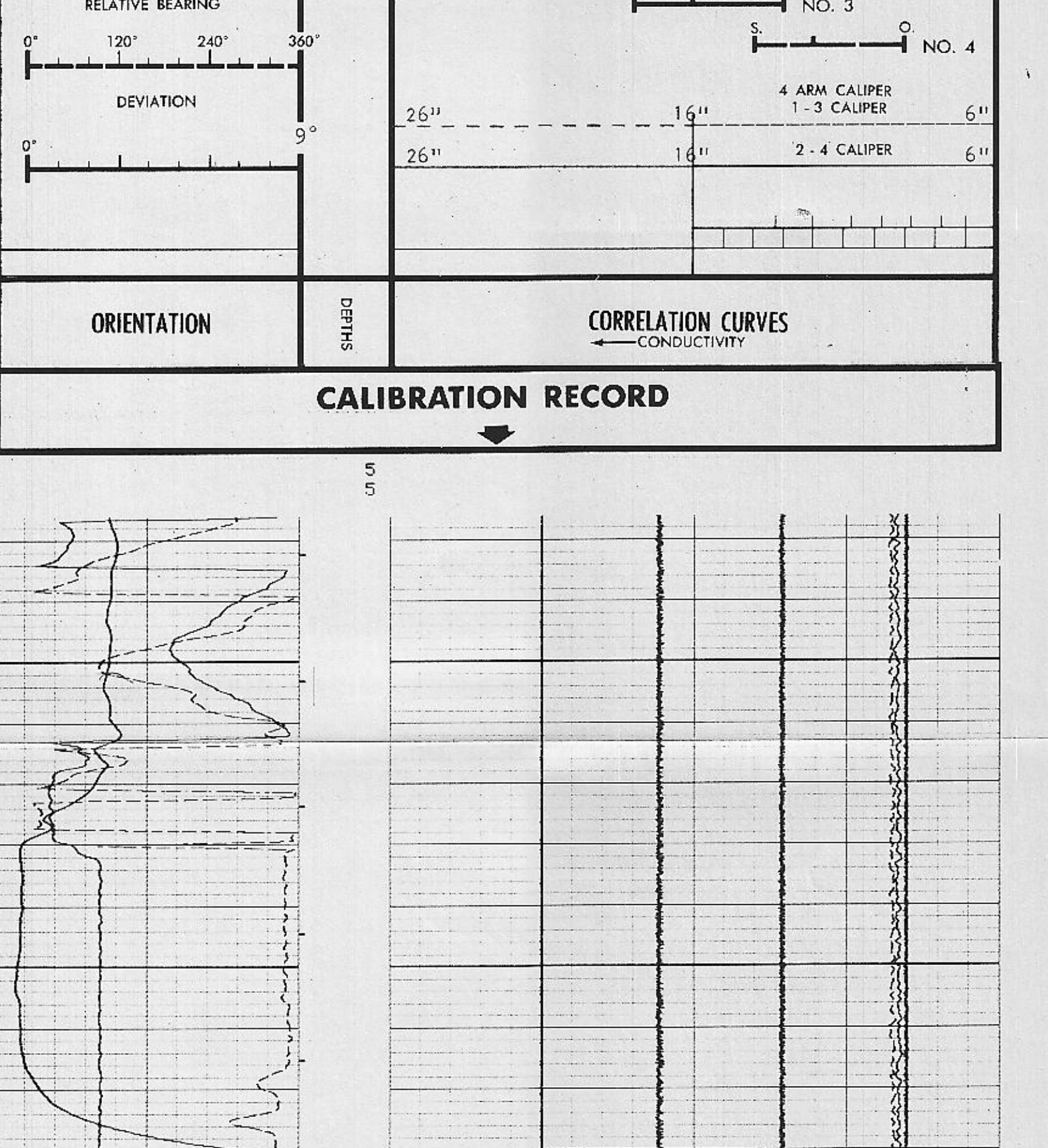
ORIENTATION: AZIMUTH, RELATIVE BEARING, DEVIATION
 CORRELATION CURVES: CONDUCTIVITY, NO. 1, NO. 2, NO. 3, NO. 4



REPEAT SECTION



CALIBRATION RECORD



DEVI (DEG)	-1.000	9.000			
RB (DEG)	-40.00	360.0			
AZIM (DEG)	-40.00	360.0			

NAME	UNIT	VALUE	NAME	UNIT	VALUE
DD	STYP	0.0	BMS	HCT	36
			DPEN	FPH1	17.50

BEFORE SURVEY CALIBRATION SUMMARY
 PERFORMED: 80/03/07
 PROGRAM FILE: HDT (VERSION 16.4 00/00/00)

HDT	MEASURED		CALIBRATED		UNITS
	SMALL	LARGE	SMALL	LARGE	
C1	8.0	13.4	8.0	12.0	IN
C2	9.0	13.4	8.0	12.0	IN

AFTER SURVEY TOOL CHECK SUMMARY
 PERFORMED: 80/03/07
 PROGRAM FILE: HDT (VERSION 16.4 00/00/00)

HDT	SMALL		LARGE		UNITS
	BEFORE	AFTER	BEFORE	AFTER	
C1	8.0	8.0	12.0	12.0	IN
C2	9.0	9.0	12.0	12.0	IN

COMPANY: CHEVRON U.S.A., INC.
 WELL: BEOWAWA 85-18
 FIELD: BEOWAWA GEYSERS
 COUNTY: LANDER STATE: NEVADA

- HIGH RESOLUTION DIPMETER CALIBRATION CODING
- MECHANICAL ZERO
 - ELECTRICAL ZERO
 - FULL SCALE ADJUST
 - CALIPER ADJUST AT 6" AND 16" CALIPER 1-3 IS CODED
 - CALIPER ADJUST AT 6" AND 16" CALIPER 2-4 IS SOLID
 - PAD #1 RESPONSE CHECK
 - PAD #2 RESPONSE CHECK
 - PAD #3 RESPONSE CHECK
 - PAD #4 RESPONSE CHECK
 - SONDE HANGING VERTICALLY
 - TOOL AND PAD #1 POINTED NORTH
 - HOOD ROTATING