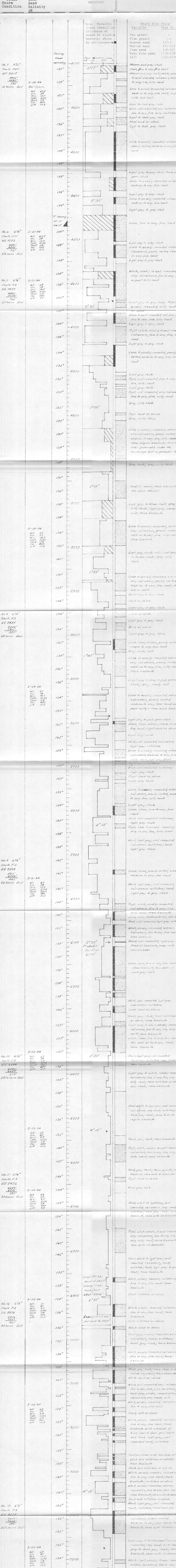


GEORGE P. ZEBAL AND ASSOCIATES
INDUSTRIAL UTILIZATION OF GEOLOGY

GRAPHIC WELL REPORT

Company: <u>Magma Power Company</u>	Well: <u>Magma-USA 61-7</u>
Area: <u>Bas. Mesa</u>	Location: <u>200 feet south and 1200 feet west of</u>
Contractor: <u>H & W Drilling Co. No. 3</u>	<u>LN corner of Sec. 7, T. 16 S, R 17 E.</u>
Commenced: <u>9:00 AM 3-17-84</u>	<u>Elevation:</u>
Completed: <u>3-17-84</u>	<u>Ground Level 26 feet</u>
Casing Record: <u>9 3/8-inch conductor set at 193 feet</u>	<u>Relly Bushing 46.5 feet</u>
<u>13 5/8-inch surface set at 2013 feet</u>	<u>Remarks:</u>
<u>7-inch intermediate set at 4170 feet</u>	
<u>4 1/2-inch slotted liner set at 7665 feet</u>	



No. 5 6 1/4" Smith F01 EE 5315 3885' 3841' 282' 16 hours Dull 2-24-84
 No. 6 6 1/8" Smith F02 EE 5315 4485' 4332' 153' 3 1/2 hours Dull 2-25-84
 No. 7 6 1/8" Smith F03 EE 7900 4591' 4330' 261' 27 hours Dull 2-27-84
 No. 8 6 1/8" Smith F3 EE 5455 5354' 5111' 243' 24 hours Dull 2-28-84
 No. 9 6 1/8" Smith F3 EE 5398 5911' 5656' 255' 26 hours Dull 3-01-84
 No. 10 6 1/8" Smith F3 EE 5398 6229' 5976' 253' 29 1/2 hours Dull 3-02-84
 No. 11 6 1/8" Smith F3 EE 5398 6227' 5976' 251' 30 hours Dull 3-04-84
 No. 12 6 1/8" Smith F3 CA 3976 EE 4225 7377' 7222' 155' 30 hours Dull 3-05-84
 No. 13 6 1/8" Smith F3 EE 4225 7377' 7222' 155' 26 1/2 hours Dull 3-07-84