

Schlumberger
DUAL INDUCTION-SFL
WITH LINEAR CORRELATION LOG

COUNTY: IMPERIAL	WELL: EAST MESA 83-7	COMPANY: MESA POWER COMPANY	STATE: CALIFORNIA
FIELD: EAST MESA	WELL: EAST MESA 83-7	OPERATOR: MESA POWER COMPANY	STATE: CALIFORNIA
LOCATION: 210517	DATE: 10-25-85	TIME: 11:00 AM	DEPTH: 1330
PERMITS: 12.0	DRILLING: 10-25-85	LOGGING: 10-25-85	LOGGING: 10-25-85
LOGGING: 10-25-85	LOGGING: 10-25-85	LOGGING: 10-25-85	LOGGING: 10-25-85

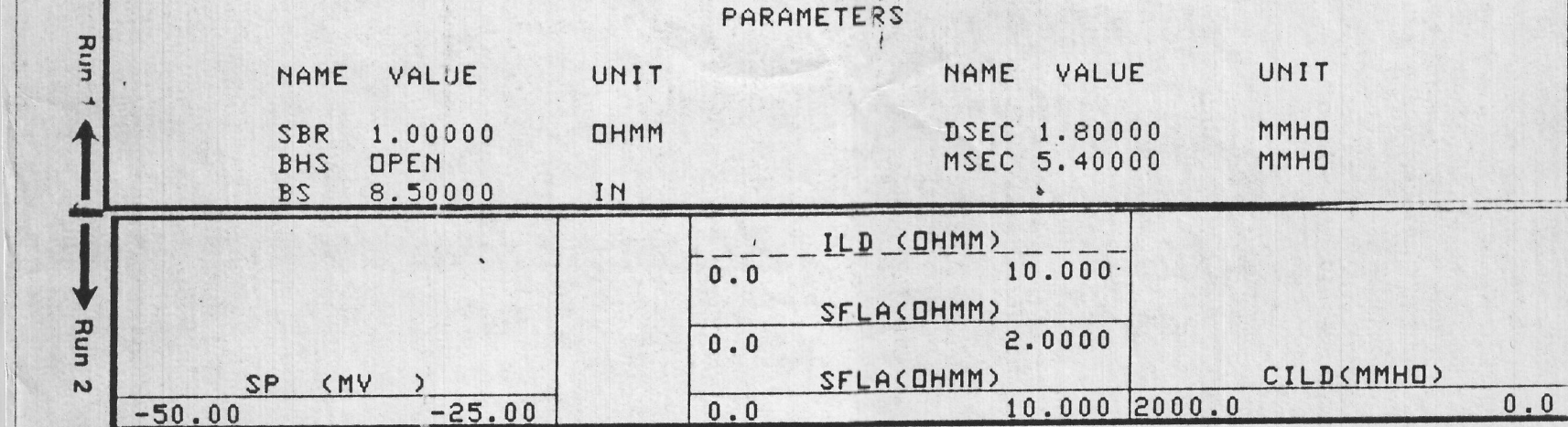
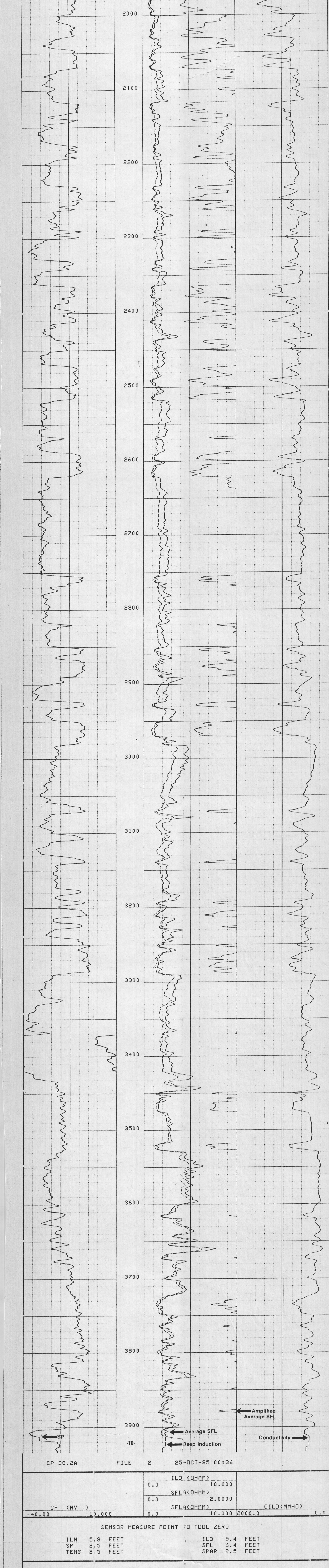
Part No.	Order No.	Fluid Level	Salinity ppm. cl	Speed FPM
112-1147	108647	1111	1.11	111

EQUIPMENT DATA	REMARKS
Panel No. 112-1147	SP (MV) 1111
Cartridge No. 112-1147	SP (MV) 1111
Mem. Panel No. 112-2003	SP (MV) 1111
G.R. Cont. No. 112-2003	SP (MV) 1111
Log Recorder (TR) M11-3980	SP (MV) 1111
Depth Encoder (DRE) ---	SP (MV) 1111
Pressure Wheel (CPM) ---	SP (MV) 1111
Type Controller ---	SP (MV) 1111
Stand Off - Inches ---	SP (MV) 1111

CALIBRATION DATA
SBR ---
Sonde Error - ILM ---
Sonde Error - ILD ---
G.R. BKG - CPS ---
G.R. Source - CPS ---
S.E. Set In Hole - Depth ---
S.E. Corr. - Hole Size ---

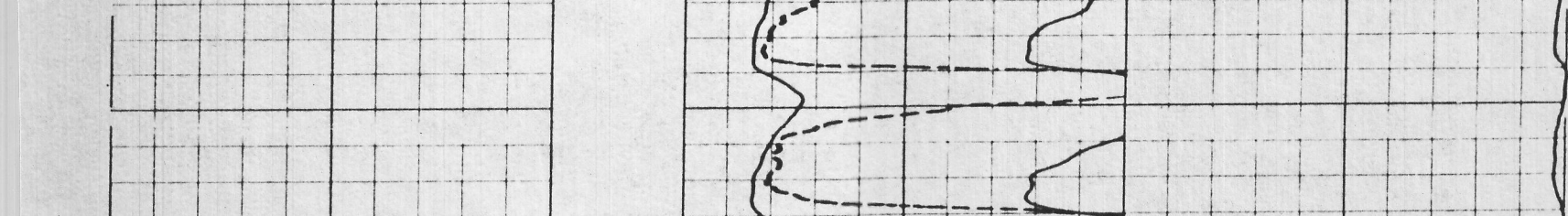
LOGGING DATA
Sonde Error Log - ILM ---
Sonde Error Log - ILD ---
G.R. Scale per 100 Div. ---
G.R. - T.C. Log ---

All interpretations and opinions based on information furnished by the customer. Schlumberger does not guarantee the accuracy or correctness of any data obtained by anyone receiving from any interpretation made by any of our officers, agents, or employees. These interpretations are also subject to our General Terms and Conditions as set forth in our contract with the customer.



SENSOR MEASURE POINT TO TOOL ZERO	
ILM 5.8 FEET	ILD 9.4 FEET
SP 2.5 FEET	SFL 6.4 FEET
TENS 2.5 FEET	SPAR 2.5 FEET

PARAMETERS	
NAME VALUE UNIT	NAME VALUE UNIT
SBR 1.00000 DHMM	DSEC 1.80000 MMHO
BHS OPEN	MSEC 5.40000
BS 8.50000 IN	



SENSOR MEASURE POINT TO TOOL ZERO	
NCNL 46.9 FEET	GR 55.4 FEET
FFDC 31.5 FEET	FCNL 46.9 FEET
CALI 31.5 FEET	MFC 31.5 FEET
SFL 6.4 FEET	ILD 9.4 FEET
SP 2.5 FEET	ILM 5.7 FEET
TENS 2.5 FEET	SPAR 2.5 FEET
NSFL 46.9 FEET	

PARAMETERS	
NAME VALUE UNIT	NAME VALUE UNIT
HC CALI 1.00000 G/C3	PSNR 2.22400
FDCC ALLD 1.80000	MATR SAND
DSEC 1.80000 MMHO	MDEN 2.65000 G/C3
MSEC 5.40000 MMHO	BHF WATE
BS 6.12500 IN	SBR 1.00000 DHMM
PP NDRM	BHS OPEN
	DD 0.0 F

TAPE NOT MADE

COMPANY: MESA POWER COMPANY	SCHL FR 5566
WELL: EAST MESA 83-7	SCHL TD 5562
FIELD: EAST MESA	DRLR TD 5700
COUNTY: IMPERIAL	STATE: CALIFORNIA
	Elev KB 52.0
	DF 50.5
	GL 40.0