

Schlumberger
DUAL INDUCTION LATEROLOG
 WITH LINEAR CORRELATION LOG

COMPANY: MAGMA POWER COMPANY
 GLODHELF-4
 WELL: 46-7B
 FIELD: EAST MESA
 COUNTY: IMPERIAL STATE: CALIFORNIA

LOCATION: 23001 E. EAST 6TH ST. 1750' NORTH OF
 SOUTHWEST CORNER
 COUNTY: IMPERIAL STATE: CALIFORNIA
 COMPANY: MAGMA POWER COMPANY
 WELL: 46-7B
 FIELD: EAST MESA
 COUNTY: IMPERIAL STATE: CALIFORNIA
 Other Services: NONE

Permanent Datum: KB
 Drilling Measured From: KB
 Log Measured From: KB
 Date: 10-14-78
 Run No.: D1E
 Depth-Driver: 2243
 From Log Interval: 2243
 To Log Interval: 2251
 Casing-Driver: 2201 @ 80-28/13.1 @ 2252
 Bit Size: 7.25
 Type Fluid in Hole: GEL - IONI FE
 Depth: 58.5
 Density: 1.0
 Viscosity: 1.0
 Source of Summation: 100%
 Rm @ Meas. Temp: 2.46 @ 85 F @ 81 F
 Rm @ Ref. Temp: 2.0 @ 85 F @ 73 F
 Spont. Pot. Ref. Kcs: 1.4 @ 95 F @ 84 @ 73 F
 Rm @ BH: 1.4 @ 95 F @ 84 @ 73 F
 ILM: 0.700 @ 10-22
 Casing on Bottom: 2130
 Equipment Location: 7807 L-3
 Recorded by: DACEY
 Witnessed by: BRASSFIELD

Run No.: ONE TWO
 Service Order No.: 21865 20654
 Fluid Level: SURFACE SURFACE
 Salinity - PPM CL: 400 500
 Speed - F.P.M.: 100 100

EQUIPMENT DATA
 Panel No.:
 Cart No.: D1P-DC-4157DC-409
 Sonde No.: D1C-B-387B-91
 Mem. Panel No.: L1P-CA-387CA-398
 G.R. Panel No.:
 G.R. Cart No.:
 Tape Recorder - (TR):
 Depth Encoder - (DRE):
 Pressure Wheel - (CPW):
 Type Centralizers:
 Stand Off - Inches:

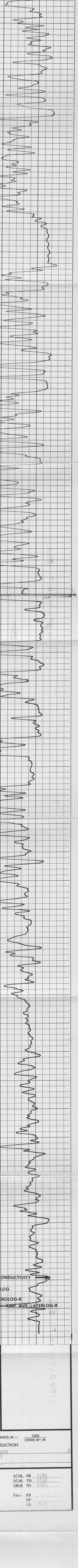
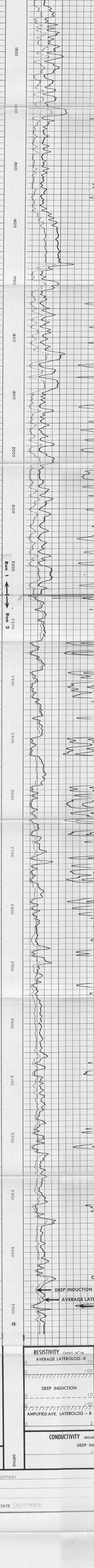
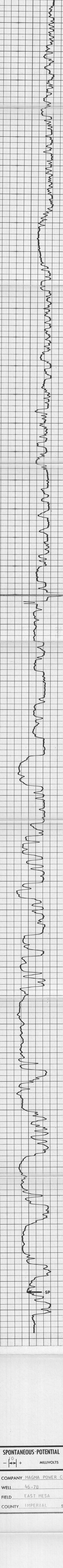
CALIBRATION DATA
 Sonde Error - ILM: 8.0
 Sonde Error - ID: 5.0
 G.R. Panel - CPS: 11.9
 G.R. Source - CPS: 5.8

LOGGING DATA
 S.E. Log - ILM: 8.0
 S.E. Log - ID: 5.0
 S.E. Cor. - Hole - Depth:
 S.E. Cor. - Hole Size:
 G.R. Scale per 100 Div.:
 G.R. - T.C.:
 G.R. Sens.:

SCALE CHANGES
 Type Log: DEEP INDUCTION
 Depth: 1000
 Scale Up Hole (Scale Down Hole):

REMARKS
 RUN ONE:
 T1 = 194 F
 T2 = 195 F
 T3 = 195 F
 SBR = 1.0
 RUN TWO:
 T1 = 218 F
 T2 = 218 F
 T3 = 216 F

All interpretations are opinions based on inferences from electrical or other measurements and we cannot and do not guarantee the accuracy or correctness of any interpretation and we shall not accept in the case of gross or willful negligence on our part, be liable or responsible for any loss, cost, damage or expense incurred or established by anyone resulting from any interpretation made by any of our officers, agents or employees. These interpretations are also subject to Clause 4 of our General Terms and Conditions as set out in our current Price Schedule.



COMPANY: MAGMA POWER COMPANY
 WELL: 46-7B
 FIELD: EAST MESA
 COUNTY: IMPERIAL STATE: CALIFORNIA

SPONTANEOUS-POTENTIAL
 MILLIVOLTS

RESISTIVITY OHMS M²/M
 AVERAGE LATEROLOG-8
 DEEP INDUCTION
 AMP. AVE. LATEROLOG-8
 CONDUCTIVITY MILLIMHOS/M = 1000 OHMS M²/M
 DEEP INDUCTION

SCHL. FR: 3225
 SCHL. TD: 3532
 DRIL. TD: 3525
 Elev.: KB
 DF: N/A
 Ct: N/A