

Schlumberger
WITH LINEAR CORRELATION LOG

COMPANY MAGMA POWER COMPANY
GALVANA 5

WELL U.S. 46-7A
FIELD EAST MESA
COUNTY IMPERIAL STATE CALIFORNIA

LOCATION 2500' EAST OF HOSPITAL NORTH
OF SOUTHWEST CORNER
2 FT. SERIAL NO. REC. 7 TWP. 16 S. RANGE 17 E.

Log Measured From: G18 12 ft. Above Perm. Down
Drilling Measured From: K8

Date 9-10-78
Run No. ONE
Depth-Driver 2196
Time Interval 2188

Run No. TWO
Service Order No. 20650
Fluid Level SURFACE
Salinity - PPM CL 600
Speed - F.P.M. 100

Panel No. DC-415
Cart No. B-354
Sonde No. DB-327
Mem. Panel No. CA-438

Loggers: GEL, L, IN, TE, GEL, L, IN, TE
Dim. Fluid Hole: 6.75, 4.25, 7.1, 5.0
Source of Mud: F, L, W, M, N, F, M

SCALE CHANGES

Type Log	Depth	Scale Up Hole	Scale Down Hole

REMARKS
RUN ONE:
NO CENTRALIZERS DUE TO BOREHOLE CONDITIONS.
600 PPM CHLORIDE.
RUN TWO: T₁ = 230 F
T₂ = 236 F

LOGGING DATA
S.E. Log - ILM 4.1
S.E. Log - LD 2.7
S.E. Set in Hole - Depth
S.E. Corr. - Hole Size
G.R. Scale per 100 Div.
G.R. - T.C.
G.R. Sens.

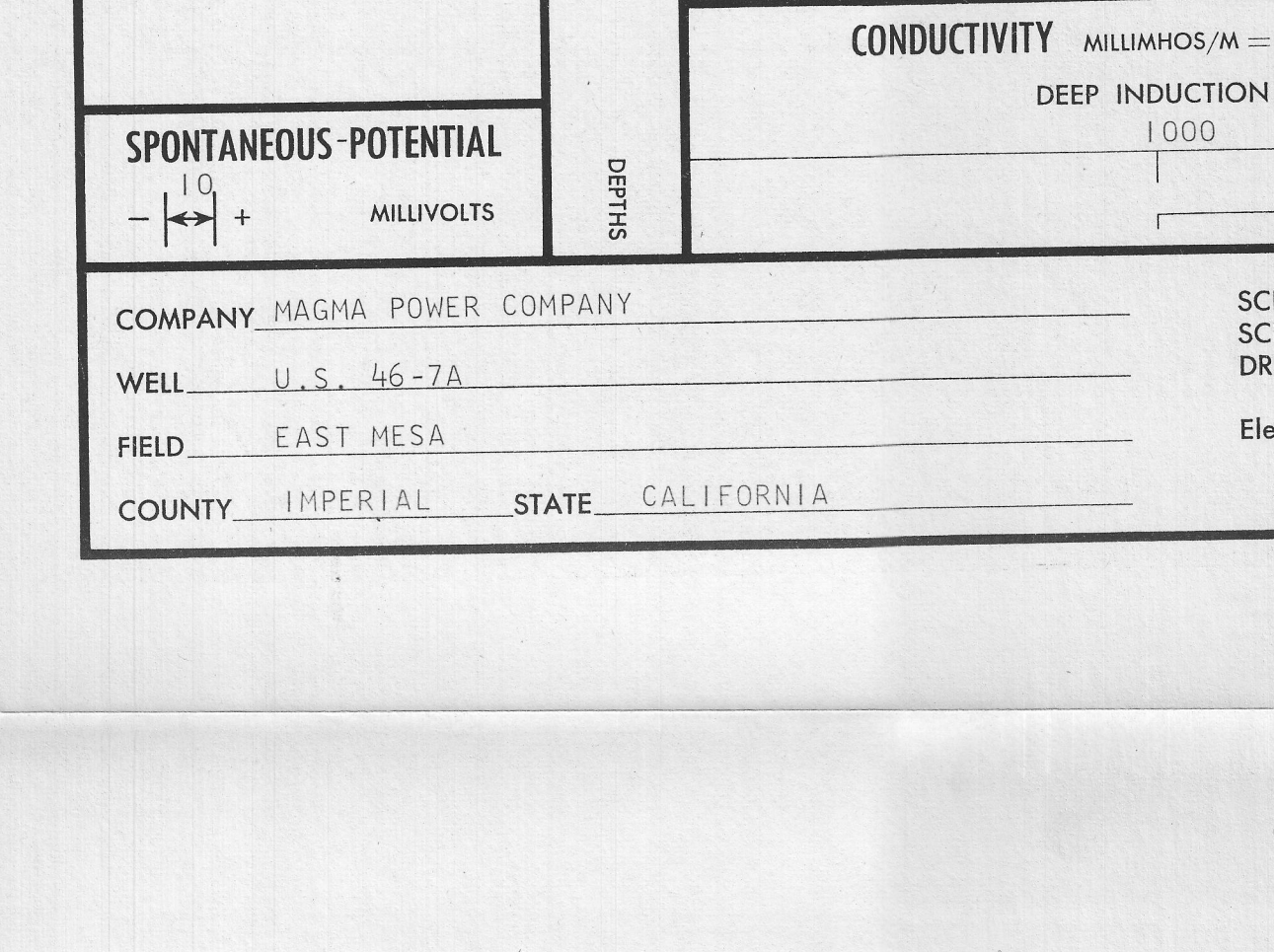
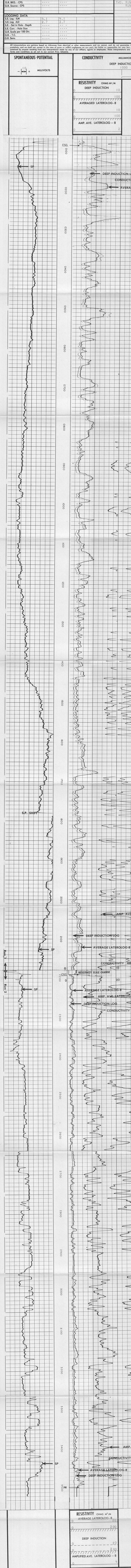
EQUIPMENT DATA
Tape Recorder - (TR)
Depth Encoder - (DRE)
Pressure Wheel (CPW)
Type Centralizers
Stand Off - Inches

CALIBRATION DATA
Sonde Error - ILM 4.1
Sonde Error - ILD 2.7
G.R. BKG. - CPS
G.R. Source - CPS

SPONTANEOUS-POTENTIAL
MILLIVOLTS

CONDUCTIVITY
MILLIMHOS/M = 1000 OHMS M²/M
DEEP INDUCTION 1000

RESISTIVITY
OHMS M²/M
DEEP INDUCTION 100
AVERAGED LATEROLOG-8 10
AMP. AVE. LATEROLOG-8 2



COMPANY MAGMA POWER COMPANY
WELL U.S. 46-7A
FIELD EAST MESA
COUNTY IMPERIAL STATE CALIFORNIA

SCHL. FR 3496
SCHL. TD 3502
DRLR. TD 3500
Elev. KB 42
DL 30

SPONTANEOUS-POTENTIAL MILLIVOLTS