

Schlumberger DUAL INDUCTION - LATERLOG 06 WITH LINEAR CORRELATION LOG	
COMPANY MAGMA POWER COMPANY MAGMA U.S. 46-7 EAST MESA COUNTY IMPERIAL STATE CALIFORNIA	
WELL EAST MESA COUNTY IMPERIAL STATE CALIFORNIA	
LOCATION MAGMA U.S. 46-7 COMPANY MAGMA POWER COMPANY LOCATION MAGMA U.S. 46-7 COUNTY IMPERIAL STATE CALIFORNIA	
Log Measured From: Elev. K8 30 Drilling Measured From: Elev. K8 30 Log Measured From: Elev. K8 30 Drilling Measured From: Elev. K8 30	
Date: 1-25-77 Run No.: 2-1-77	
Depth-Driller: 2156 Depth-Log: 2156 From Log Interval: 2145 From Log Interval: 2145	
Counting Drifter: 89 @ 93 @ 2153 @ 2152 Counting Drifter: 89 @ 93 @ 2153 @ 2152	
Type Fluid in Hole: GEL - GUINTEGM Density: 1.24 Viscosity: 1.7 Bit Size: 1.75 Bit Size: 1.75	
Run @ Mean Temp: 2.86 @ 70 F 3.18 @ 64 F Run @ Mean Temp: 2.86 @ 70 F 3.18 @ 64 F Run @ Mean Temp: 2.86 @ 70 F 3.18 @ 64 F	
Source of Sample: CIRCULAR ED P. 17 Source of Sample: CIRCULAR ED P. 17 Source of Sample: CIRCULAR ED P. 17	
Run @ BH: 1.15 @ 75 F 1.15 @ 77 F Run @ BH: 1.15 @ 75 F 1.15 @ 77 F Run @ BH: 1.15 @ 75 F 1.15 @ 77 F	
TIME: 2230 Log per Foot: 177 Log per Foot: 177 Log per Foot: 177	
Equipment Location: 7816 - LB 7807 - LB Equipment Location: 7816 - LB 7807 - LB Equipment Location: 7816 - LB 7807 - LB	
Recorded by: LIEPINCOTT JONSON Recorded by: LIEPINCOTT JONSON Recorded by: LIEPINCOTT JONSON	
Drawn by: BASSIN Drawn by: BASSIN Drawn by: BASSIN	

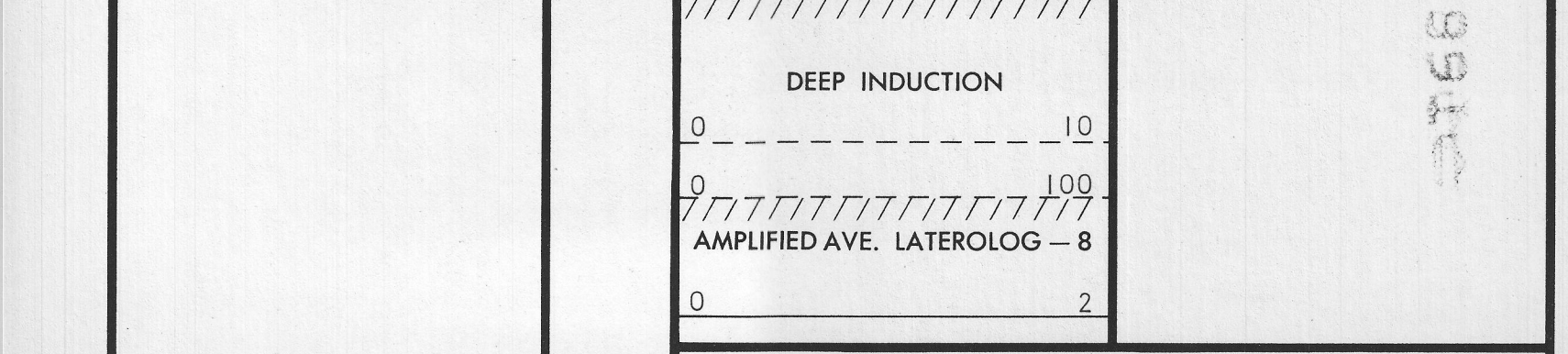
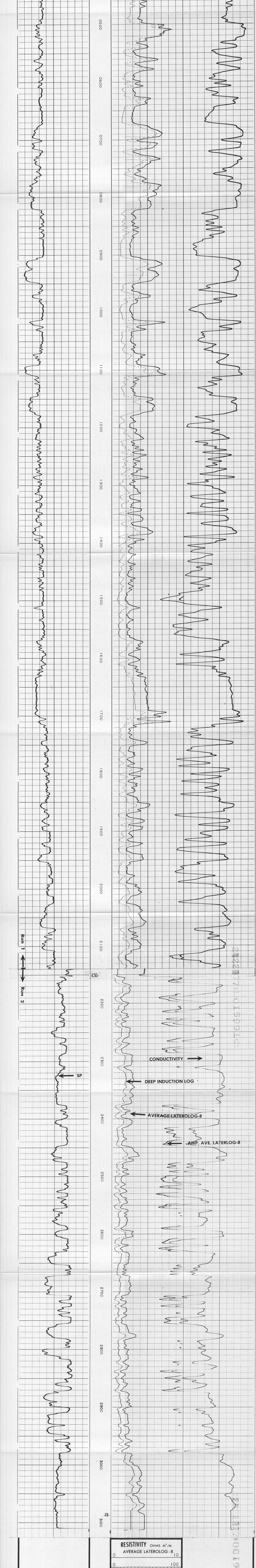
Run No.	ONE	TWO
Service Order No.	15991	30985
Fluid Level	SURFACE	SURFACE
Salinity - PPM CL	600	---
Speed - F.P.M.	100	100

EQUIPMENT DATA Panel No. DIP-DC-409 / DC-415 Cart No. DIC-B-354 / DB Sonde No. DIS-DB-227 / BA-398 Mem. Panel No. TLP-BA-43 / BA-398 G.R. Cart No. --- Tape Recorder - (TR) --- Depth Encoder - (DRE) --- Pressure Wheel (CPW) --- Type Controlizers FINS Stand Off - Inches 1.4		SCALE CHANGES Type Log Depth Scale Up Hole Scale Down Hole --- --- --- ---
---	--	---

CALIBRATION DATA Sonde Error - ILM +2.2 Sonde Error - HD +4.0 G.R. BKG. - CPS --- G.R. Source - CPS ---		REMARKS
--	--	--------------------------------

LOGGING DATA S.E. Log - ILM +2.2 S.E. Log - HD +4.0 S.E. Set in Hole - Depth --- S.E. Carr. - Hole Size --- G.R. Scale per 100 Div. --- G.R. - T.C. --- G.R. Sens. ---		LOGGING DATA S.E. Log - ILM +2.2 S.E. Log - HD +4.0 S.E. Set in Hole - Depth --- S.E. Carr. - Hole Size --- G.R. Scale per 100 Div. --- G.R. - T.C. --- G.R. Sens. ---
--	--	--

All interpretations are opinions based on inferences from electrical or other measurements and we cannot, and do not guarantee the accuracy or correctness of any interpretation, and we shall not, except in the case of gross or willful negligence on our part, be liable or responsible for any loss, cost, damage or expense incurred or sustained by anyone resulting from any interpretation made by any of our officers, agents or employees. These interpretations are also subject to Clause 4 of our General Terms and Conditions as set out in our current Price Schedule.



SPONTANEOUS-POTENTIAL MILLIVOLTS --- ---	
--	--

COMPANY	MAGMA POWER COMPANY	SCHL. FR.	3087
WELL	MAGMA U.S. 46-7	SCHL. TD.	3093
FIELD	EAST MESA	DLR. TD.	3095
COUNTY	IMPERIAL STATE CALIFORNIA	Elev.	KB 42
		DF	---
		GL	30