

GEOHERMAL EVALUATION
OF THE
SANDY, UTAH AREA

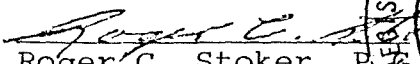
submitted to:

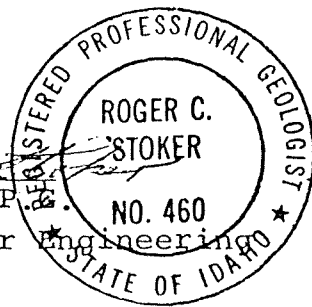
UTAH ROSES, INC.
567 W. 90th S. (Sandy)
SALT LAKE CITY, UT 84070

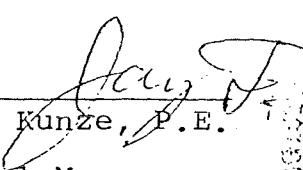
Prepared by

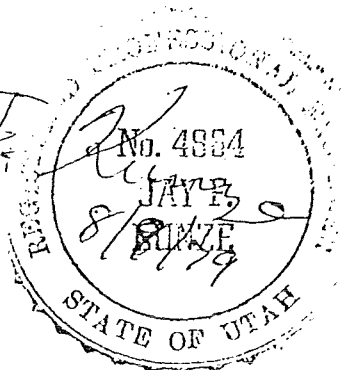
ENERGY SERVICES, INC.
1084 N. SKYLINE DR.
IDAHO FALLS, ID 83401

July, 1979


Roger C. Stoker, P.E.
Mgr., Geological & Reservoir Engineering




Jay F. Kunze, P.E.
General Manager



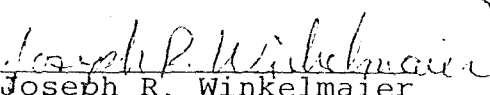

Joseph R. Winkelmaier
Student Geologist

TABLE OF CONTENTS

	<u>Page</u>
1. Title Page	i
2. Table of Contents	ii
3. Figures, Tables, and Acknowledgementsiii
A. Introduction.	1
B. Location	1
C. General Topography & Hydrology	3
D. General Ground Water	4
E. General Geology5
F. Geothermal Data Evaluation	10
1. Aeromagnetic Map	10
2. Valley Thermal Springs	12
3. USGS Circulars 726 and 790	15
4. State Foestry Well No. 1	16
5. Salt Lake County Conservancy	17
6. Other Area Warm Wells	23
G. Geothermal Resource Potential Summary	24
1. Geothermal Hydrology	24
2. Production Well	25
3. Injection Well	25
H. Drilling Prognosis	26
I. References	27

FIGURES

	<u>Page</u>
1. Location of Utah Roses	1
2. USGS Total Intensity Aeromagnetic Map	11
3. Thermal Springs & Major Fault Zones of Utah	13
4. Conservancy Well Log, June 4, 1979	18
5. Conservancy Well Log, June 25, 1979	21

TABLES

1. Salt Lake County Conservancy Well Water Chemistry	19
---	----

ACKNOWLEDGEMENTS

The Utah Geological and Mineral Survey (Peter J. Murphy and Ben L. Everitt) and the University of Utah Research Institute (Phillip M. Wright and Debra W. Struhsacker) were most helpful in reviewing the assessment of the resource and in the gathering of the data. The Salt Lake County Water Conservancy District cooperated in sharing costs of testing the conservancy well. Consultant Jack Barnett was most helpful in providing perspective in terms of the water rights and geological/hydrological assessment.

GEOHERMAL EVALUATION

OF THE

SANDY, UTAH AREA

A. INTRODUCTION

This study was conducted under contract to Utah Roses, Inc. in support of a Department of Energy (DOE) Program Opportunity Notice (PON) project. The PON is a cooperative project between Utah Roses, Inc. and DOE designed to demonstrate the useful space heating application of geothermal energy to the floral industry.

The primary objective of the study is to evaluate and select the most geologically favorable sites for the drilling of geothermal wells around Sandy, Utah, specifically the Utah Roses, Inc. property. All readily available data (reports, maps, surveys, and studies) were examined and the pertinent data evaluated in regard to the occurrence of the geothermal resource. This study presents the interpretation of the pertinent data, reconnaissance findings, and recommendations concerning geothermal drilling sites.

B. LOCATION

Utah Roses, Inc. is located in the southern part of the Jordan Valley which is situated in north-central Utah. The greenhouse complex is located approximately 13 miles south of Salt Lake City at 90th south, just west of I-15 in Sandy, Utah. See Figure 1.

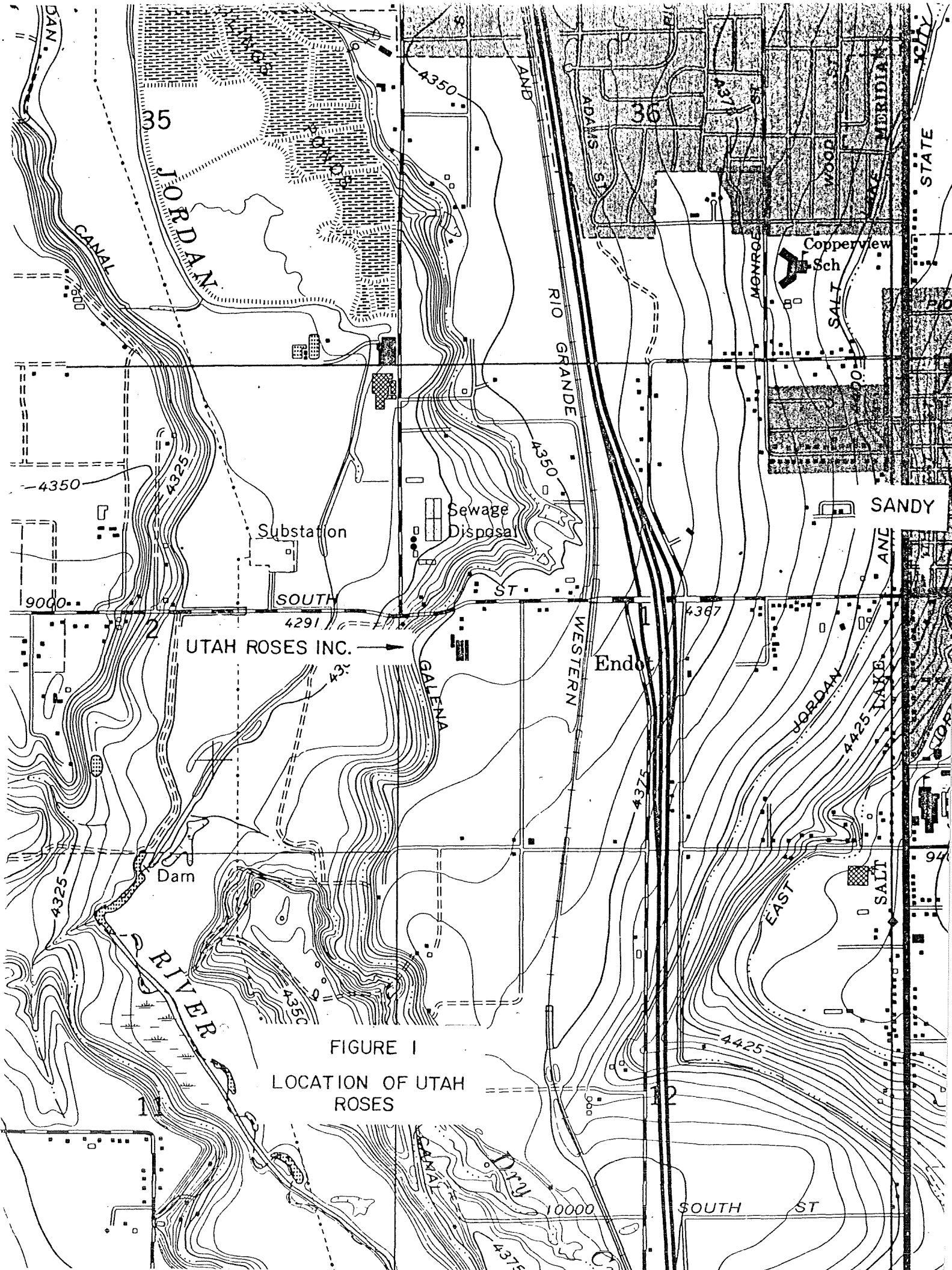


FIGURE I
LOCATION OF UTAH
ROSES

C. GENERAL TOPOGRAPHY AND HYDROLOGY

The Utah Roses, Inc. property is located in the Jordan Valley, a structural valley on the eastern edge of the Basin and Range physiographic province. The valley has an area of about 400 square miles with Salt Lake City located in the northeast portion. The town of Sandy is near the southern end of the valley, located about 6 miles west of the mouth of Big and Little Cottonwood Canyons.

The valley is bounded on the east by the Wasatch Range, with peaks higher than 11,000 feet above mean sea level and a local relief of about 6,000 ft. On the south the valley is bounded by the Traverse Mountains, whose relief is about 2,000 ft. On the west are the Oquirrh Mountains with a relief of 4,000 ft. The valley floor is relatively flat and slopes gently northward.

The principal source of surface water is the north-flowing Jordan River and six major creeks that drain the Wasatch Range. Most of these creeks drain from about ten miles back of the mountain front and flow westward through deep canyons. When the streams exit from the mountains, they flow westward across deposits of coarse unconsolidated material at the edges of the valley, losing part of their flow by influent seepage. This water recharges the vast ground-water basin that consists of unconsolidated deposits of gravel, sand, silt and clay. No perennial streams enter the valley from the Traverse or Oquirrh Mountains.

D. GENERAL GROUND WATER

The ground water in the Jordan Valley occurs in three general divisions: a shallow unconfined ground-water body, local perched water, and an artesian reservoir. Ground water is unconfined along the benches and forms a continuous body with the artesian reservoir in the central valley. Most of the recharge to the ground-water system is along the benches. The bulk of the ground-water resource is in the artesian reservoir in the lower portions of the valley.

The sediments that filled the Jordan Valley were deposited by several forces in several environments, and the complex pattern of deposition resulted in a ground-water aquifer that ranges widely from place to place in permeability and porosity. The lensey and discontinuous aquifers have been divided into six districts based on geology, water-bearing properties of the deposits, and the quality of the ground water.

The Sandy area can be described at depth, geohydrologically, as large thicknesses of well-sorted gravels interbedded with lake-bottom clays. There are also numerous channel gravels of ancient perennial streams. The ground-water moves generally northwest, responding irregularily to climatic changes. There exist many large diameter wells with hand dug wells common. Most wells are less than 150 feet in depth and under flowing artesian conditions. Specific capacities range from 6-200 gpm/ft with an average of 45 gpm/ft.

E. GENERAL GEOLOGY

The Jordan Valley lies at the eastern edge of the Basin and Range physiographic province, bounded on the east by the Wasatch Range and on the south and west by the Traverse and Oquirrh Mountains. The valley is a graben and the surrounding mountains have been uplifted relative to the valley. The boundaries between the valley and mountains are most often marked by faults. In addition to the boundary faults separating the Jordan Valley from the adjacent mountains, other faults, more or less in the middle of the valley, define an inner graben which contains a considerable thickness of sediment derived from the adjacent mountains.

The Wasatch fault zone separates the Wasatch Range from the valley and is the predominate feature in the area. The fault zone is a typical Basin and Range normal fault zone. It consists of a sevier of individual faults with a braided or branching pattern. Most of the faults in the valley and on the east side strike N-S and dip 55° to 75° to the west. Those on the west side of the valley strike N-S and dip to the east at approximately 60° .

The Wasatch Fault zone and associated faults are currently active and movement along them have resulted in 58 strong earthquakes from 1850 to 1949. Generally, however, the majority of the disturbances have been relatively minor in nature and undetectable to the general populace. It would appear that the movements began in late Tertiary and have continued intermittently to the present time. The latest movement on the Wasatch Fault is that of normal upthrusting with the mountain block being uplifted carrying sediments of the Lake Bonneville group and younger alluvial fans upward from 60 to 200 feet.

The total vertical displacement along the Wasatch Fault zone is difficult to estimate because of the amount of sedimentation that has accumulated in the valleys and the covering of many of the fault lines. Several faults have been inferred from gravity surveys, but their displacement can only be estimated. There are few deep wells in the area and generally wells do not exceed 800 ft. in depth. However, the vertical displacement would appear to be at least 750 ft. and probably 3,000 ft. or more.

The mountains that surround the area are composed of rocks that range in age from Precambrian to Recent. In the Wasatch Range to the east of the valley, the rocks include thick sequences of sedimentary rocks of Precambrian, Paleozoic, Mesozoic, and Cenozoic age intruded by granitic rocks of Late Cretaceous or early Tertiary age. The Traverse Mountains to the south consist principally of rocks of the Oquirrh Formation of Pennsylvanian and Permian age and of sedimentary and volcanic rocks of Tertiary age. The part of the Oquirrh Mountains that borders the Jordan Valley to the west is composed of Paleozoic rocks, principally of the Oquirrh Formation, but including Mississippian rocks, and sedimentary, intrusive, and extrusive rocks of Tertiary age.

Among the most impressive aspects of the landscape of the area are the deposits and erosional features of Lake Bonneville. Tremendous embankment deposits of gravel and sand are at the mouths of many canyons and at the Jordan Narrows. Sharp shorelines of Lake Bonneville are etched in bedrock and in pre-Lake Bonneville alluvial fans alike all around the valley. The most prominent shore lines are the Bonneville, ranging from about 5,135-5,180 feet, and the Provo at about 4,800 feet elevation.

The Wasatch Mountains are also characterized by folded sedimentary strata (intense folding locally) and intruded granite. Several steep-sided E-W canyons open out onto the Valley proper. These canyons are the direct result of glaciation, faulting or differential erosion depending on the individual canyon.

Alluvial deposits were laid down in the valley both before and after Lake Bonneville. On the west side of the valley the Tertiary deposits that have been pedimented by later erosion are principally stream or mudflow deposits. All over the valley minor stream activity since Lake Bonneville time has scarred or obscured older deposits.

The earth movements that originally formed the valley have continued into comparatively recent times and have formed scarps in the unconsolidated deposits of the valley. The most prominent of the faults showing late movement is the East Bench fault which is marked by a scarp that reaches a height of 80 feet in the unconsolidated deposits in the northeastern part of the Jordan Valley. The west-facing scarp of the East Bench fault, together with the east-facing scarps of the Jordan Valley fault zone delineate an inner graben within the Jordan Valley.

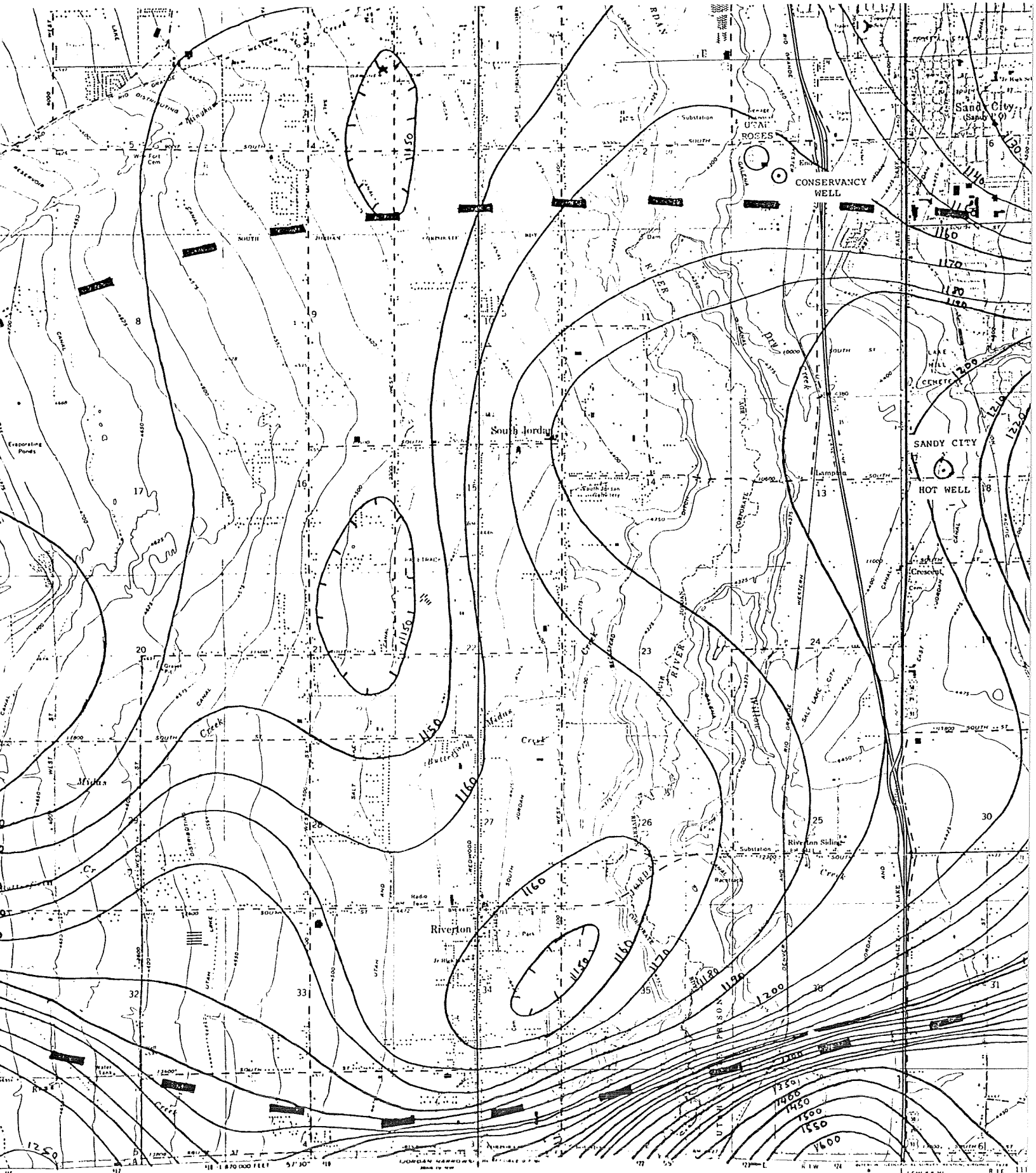
The late surface geology of the Jordan Valley consists principally of unconsolidated deposits laid down by the streams, lakes, and winds in Quaternary time. There are also extensive outcrops of pre-Quaternary rocks generally in areas where pediments formed at the base of the mountains. The history and sequence of deposition is complex and no stratigraphic sequence is applicable to the valley as a whole. The principal rock types in the valley fill are made up of interbedded clay, silt, sand, gravel, tuff, and lava. The thickness of the fill material is in the order of 3,000 feet in the vicinity of the Utah Roses property. The fill may be as much as 5,000 feet deep in the area approximately four miles west. The estimated thickness of the fill is based on well depth, aeromagnetic data, and gravity data compiled by the USGS.

F. GEOTHERMAL DATA EVALUATION

1. Aeromagnetic Map

An aeromagnetic survey was run in the southern Jordan Valley by Books of the USGS in 1954. The data was plotted and a map prepared by ASARCO in July, 1954. The map shows the magnetic gradient of the valley floor. Steep magnetic gradients on the north side of the Traverse Mountains in the south and the presence of Crystal Hot Springs in the same area would indicate the presence of an east-west trending fault zone. The map also shows a relatively steep magnetic gradient trending E-W that passes just south of Sandy and the Utah Roses property. See Figure 2.

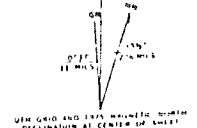
The Sandy magnetic gradient has been recorded as an E-W trending fault zone on several maps of the area. The source of this interpretation has been impossible to track down and verify. Some workers, in fact, see no definite indication of faulting based on the available geophysical data. However, the fact the valley fill material is in excess of 3,000 feet deep in the area immediately west of Sandy, may account for the magnetic gradient becoming less definitive in the area around Utah Roses. The steep gradient that shows up south and east of Sandy would indicate the definite possibility of a fault zone in that area. If the fault zone does indeed exist and carries geothermal water, horizontal movement of the water into the valley fill material can be expected. Since Utah Roses is less than 1/2 mile away from the projected fault trace, it can be considered a good geothermal exploration area.



published by the Geological Survey

405/HOAA
 Symmetric methods from aerial photographs
 available surveys 1924 and 1927. Revised from
 in 1962. Field checked 1963
 1927 North American datum
 on Utah coordinate system, central zone
 Transverse Mercator grid ticks.

in which only landmark buildings are shown
 indicate selected fence lines
 compiled from aerial photographs
 This information not field checked
 portion of urban areas

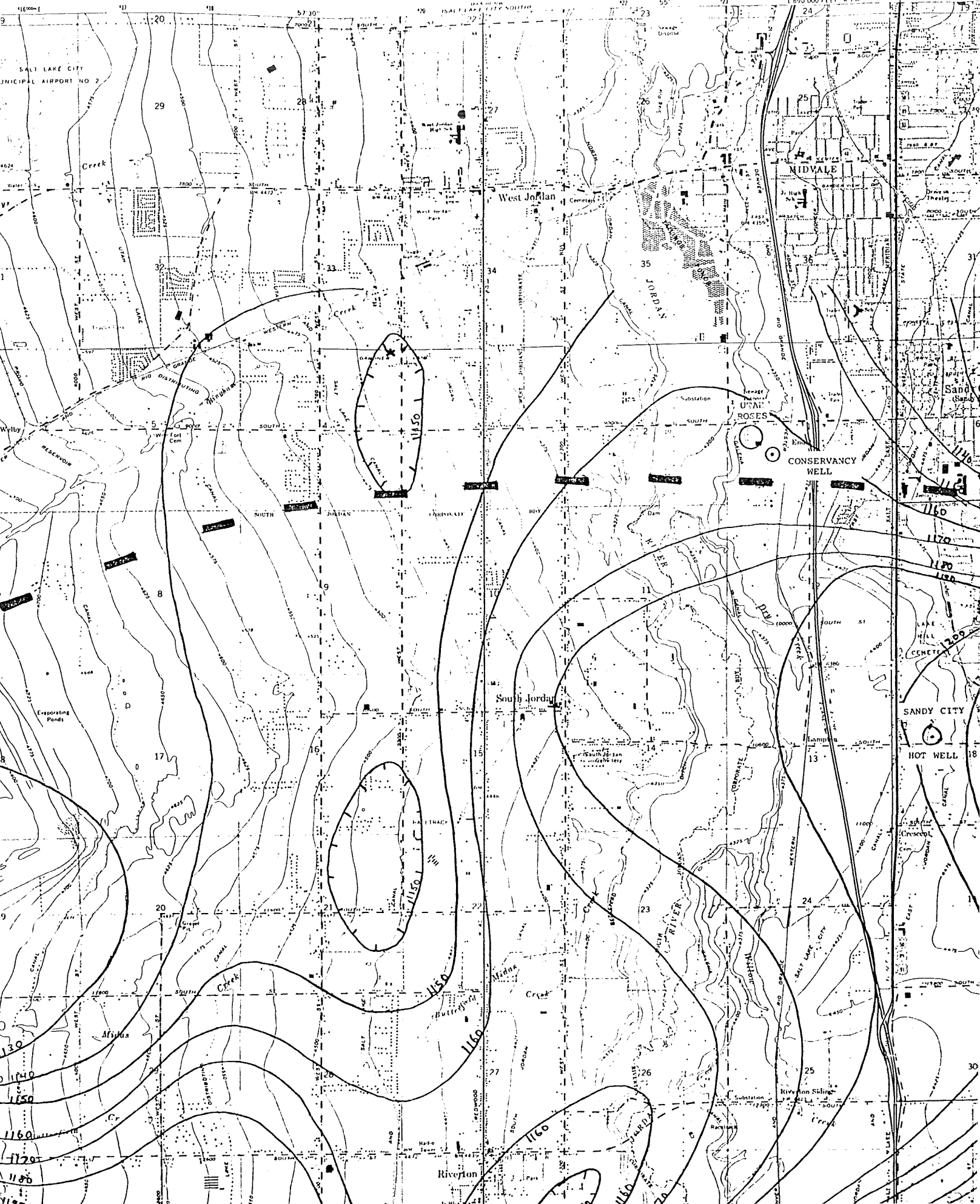


THIS MAP COPIED WITH NATIONAL MAP WITHOUT STAMPING
 FOR SALE BY U.S. GEOLOGICAL SURVEY (PHOTOGRAPHIC DIVISION, RESTON, VIRGINIA 22092)
 A FOLDER DESIGNING (TOPOGRAPHIC MAPS AND SYMBOLS) IS AVAILABLE ON REQUEST

FIGURE 2
 USGS TOTAL INTENSITY
 AEROMAGNETIC MAP
 DRAPER PROJECT
 CONTOUR INTERVAL
 10 and 50 GAMMAS

ROAD CLASSIFICATION
 Heavy-duty ——— Light duty - - -
 Medium-duty ——— Unimproved dirt - - -
 U.S. Route ○ State Route
 Interstate Route

MIDVALE, UTAH
 H4010—W11152 5/77
 1963
 PHOTOREVISED 1969 AND 1
 AMS 3685 III SW—SERIES V



2. Valley Thermal Springs

There are numerous hot springs that occur within the State of Utah. Reported temperatures of these springs range from 68°F to 189°F. Nearly all of them are near or in known fault zones. See Figure 3.

Two of these springs are in the general vicinity of the project site. Crystal Hot Springs is located approximately 6 miles south of the site at the Utah State Prison. The water temperature is reported at 137°F with a minimum projected temperature of 225°F at depth; based on the silica concentration (55 ppm). Saratoga Hot Springs is 16 miles south of the project site on the west bank of Utah Lake. It flows with a reported temperature of 111°F with a minimum projected temperature of 160°F at depth; again based on the silica concentration (25 ppm).

Both of these springs are located along separate fault zones and are undoubtedly a mixture of the geothermal resource and cold ground water. When cold water mixing is assumed, the possible reservoir temperature of Crystal Hot Springs water is 350°F and 250°F for Saratoga Hot Springs. The total dissolved solids of both springs are about 1500 ppm and the waters are of the calcium sodium chloride type. However, Saratoga Hot Springs is higher in sulfate (420 ppm) than Crystal Hot Springs (140 ppm). Otherwise the waters are very similar and indicate that the source water may be of similar origin.

WJ

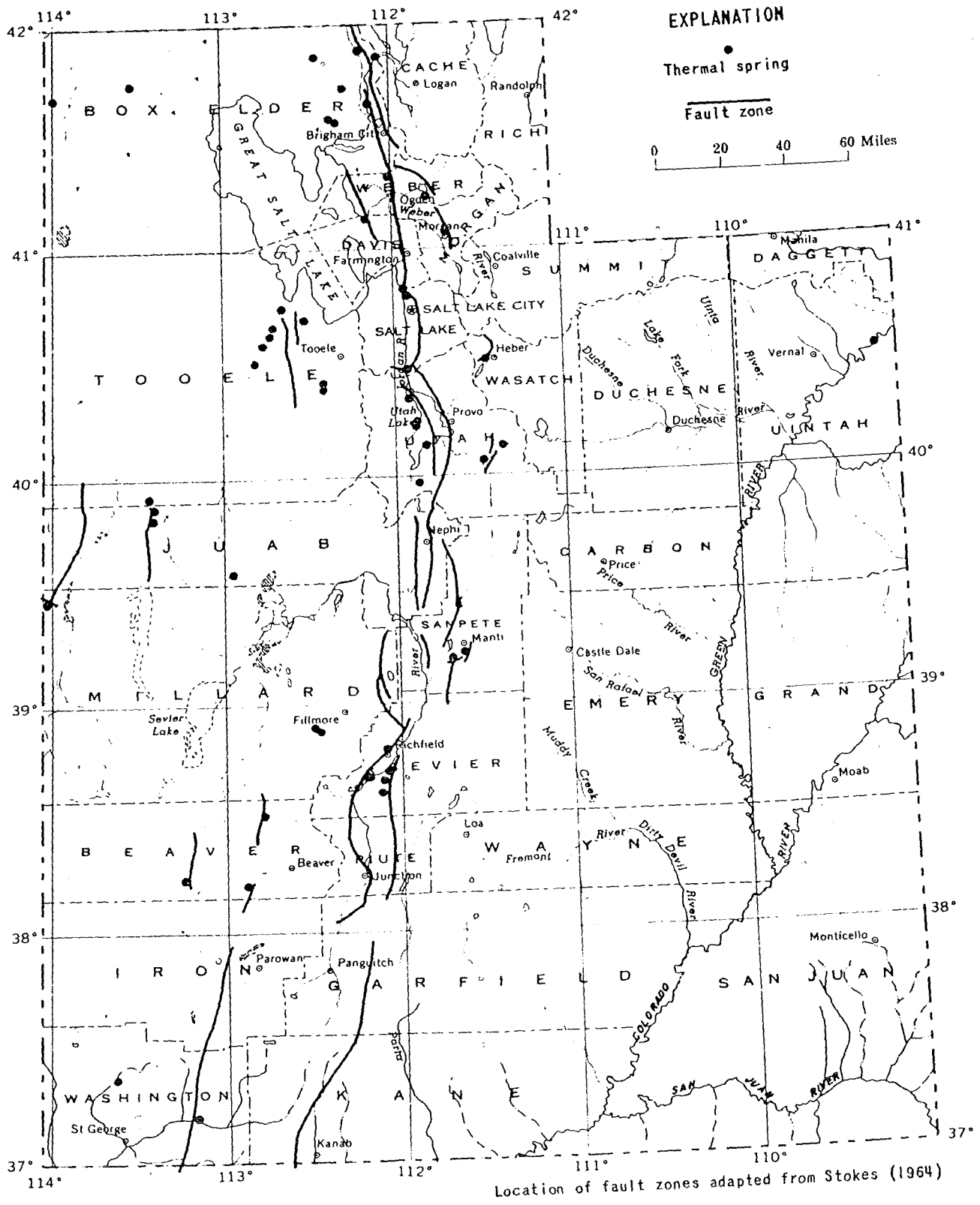


FIG. 3

THERMAL SPRINGS AND MAJOR FAULT ZONES OF UTAH

(Taken from Utah Geological and Mineralogical Survey Water Resources Bulletin 13, 1970)

The springs occur along the fault zones where the quartzite bedrock has been uplifted against the valley fill material. The presence of these springs indicate that the major faults in the area provide the channels and permeability for movement of the geothermal waters. It is reasonable to assume that the geothermal waters also move horizontally away from the fault zones into the valley fill material. /

3. U.S.G.S. Circulars 726 and 790

Crystal Hot Springs (6 miles south of Utah Roses) is listed as a possible 275°F subsurface reservoir based on geochemistry in Circular 726. The spring discharge is listed at 136°F, with a dissolved solids content of 1430 ppm. Crystal Hot Springs consists of four springs discharging approximately 60 gpm total from unconsolidated valley fill. Circular 726 does not cover Saratoga Hot Springs at all.

Circular 790 reports both hot springs as part of the Wasatch Front group with discharge temperatures between 95°F and 136°F. It states that all the springs result from deep circulation in fault zones and have high yields of moderately saline to briny water.

4. Utah State Forestry Well No. 1

This well was drilled on the Utah State Prison grounds right next to Crystal Hot Springs. Total depth of the well is 280 feet. Fractured quartzite bedrock was encountered at 265 feet in a fault zone. No water production occurred below the fault zone. An artesian flow rate of 12 gpm was recorded with a discharge temperature of 167°F. A maximum downhole temperature of 175°F was recorded on April 27, 1978. The well was ^{Preferated} cased from a depth of 170 to 280 feet. Originally the water surface was 2 feet below ground level and only developed flow (12 gpm) after it was cleaned out by jetting compressed air down the hole.

This well indicates the importance of fault zones as ✓
geothermal water sources and zones of permeability. It verifies
that 167°F geothermal water is present in the area at shallow
depths and can be recovered easily. The horizontal extent of the
reservoir can not be determined from the present well data.

However, it appears that the geothermal water is moving upward and laterally within the fault zone with leakage occurring horizontally into the permeable sands and gravels of the valley fill material. Apparently there is no significant production coming from the quartzite bedrock unless it is fractured.

only 30gpm on pumping

1/2 miles away

5. Salt Lake County Conservancy Well

This well was completed in January, 1966 to a total depth of 800 feet. The well is located approximately 1,000 feet southeast of the center of the Utah Roses property. See Figure 2. The well had a reported discharge temperature of 76⁰ during a 27 hour pump test (728 gpm) in 1966. The well has been static and not used since it was drilled.

The well was temperature logged and pump tested in June, 1979. Figure 4 shows the temperature log made on June 4th before anything was done to upset the well or the water within the wellbore. On June 6th the well was pumped for approximately 6 hours at a nominal 1,000 gpm. The well drawdown was only a total of 90 feet (55 to 145) during the pump test. The water level would have probably stabilized at approximately 165 feet (110 feet of drawdown) after the six hours of pumping if the pump had not gone off for 10 minutes about 4½ hours into the test.

FIG. 4

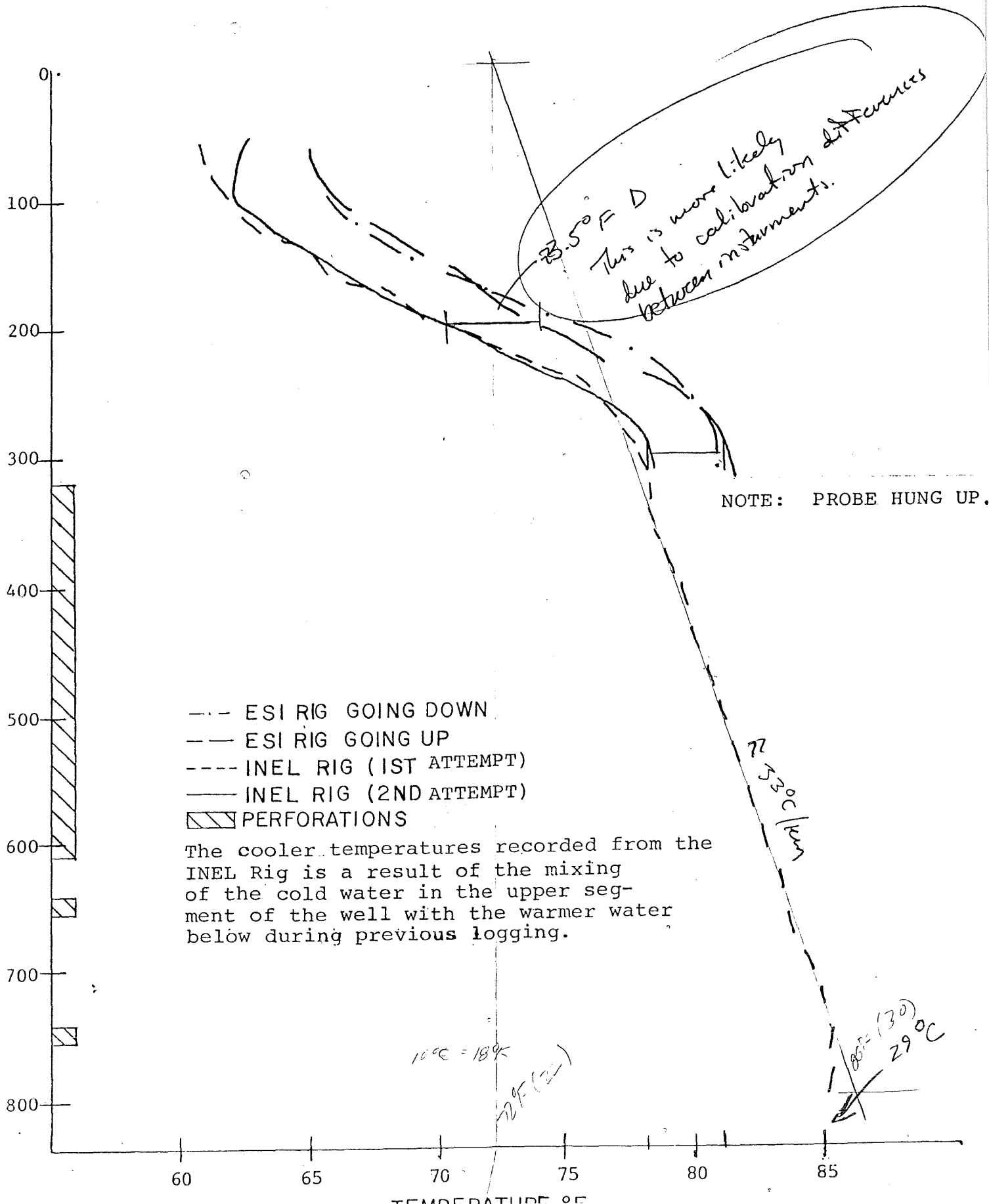


TABLE 1

Salt Lake County ConservancyWell Water Chemistry

(results in ppm unless otherwise indicated)

CaCO ₃ (Alkalinity)	112	As	.005
Ba	.11	HCO ₃	137
B	.160	Cd	<.001
Ca	16	CO ₃	<.01
Cl	20	Cr (Dis)	<.001
Cr (Hex.)	<.001	Conductivity (μ mhos/cm)	330
Cu	.001	F	.56
CaCO ₃ (Hardness)	42.0	Fe (Dissolved)	.150
Fe (Total)	.590	Pb	<.001
Mg	2.88	Mn	.030
Hg	<.0002	Ni	<.001
NO ₃ -N	<.01	K	1.76
Se	<.001	SiO ₂	13
Ag	<.001	Na	58
SO ₄	26.0	TDS	212
S	<.01	Turbidity NTU	460
pH Units	7.48	Zn	.002

@25°C?

Are these average values or for one sample?

Several geochemical samples were taken during the pump test and analyzed. Those results are shown in Table 1. After examining the data and performing geochemical analysis; there was a suspicion that the bottom of the well was producing hotter water than was recorded during the initial temperature log of June 4th.

Consequently, the well was temperature logged again on June 25th. Those results are shown in Figure 5. The bottom hole temperature was 93⁰F. Apparently, the strenuous pumping of the well brought in warmer geothermal water and this water was not completely cooled to the normal equilibrium conditions before the second log was made, 2½ weeks after the pumping of the well. If the well were designed as a geothermal well (case out the cold water above 520 feet), it is capable of producing water at approximately 90⁰ F.

56 °C/km

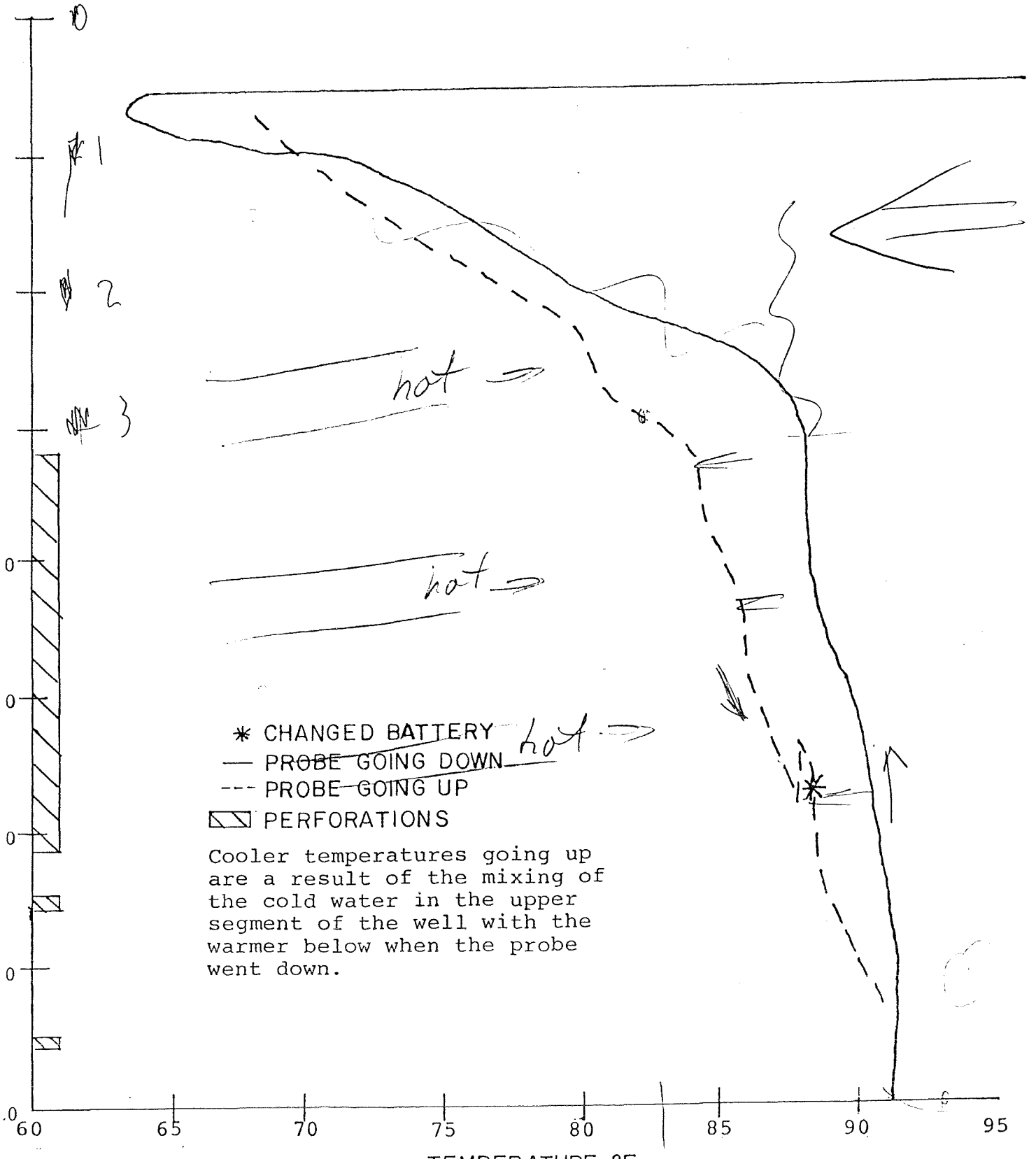
A temperature gradient of 3.1⁰F/100 ft is derived when using the 77.5⁰F at 300 feet and 93⁰ at 800 feet. A temperature gradient of 1.7⁰F/100 ft results when using the data from the June 4th temperature log. Using an average (2.5⁰F/100 ft) temperature gradient the following is the estimated temperature at the given depth.

Handwritten notes: 25.3°C, 33.8°C - this is not the gradient, 152.5m, 45°C/km - this is this

Depth	Temperature	
	Estimated	Range
800 feet	90 ⁰ F	
2,000 feet	120 ⁰ F	(110 - 127 ⁰ F)
3,000 feet	145 ⁰ F	(127 - 158 ⁰ F)
4,000 feet	170 ⁰ F	(144 - 189 ⁰ F)

FIG. 5

SALT LAKE COUNTY
CONSERVANCY WELL LOG
JUNE 25, 1979



For the purposes of geochemical analysis, it was conservatively assumed that the 93⁰F water was being mixed with 62⁰F cooler water nearer the surface, to give the well head flowing temperature of 78⁰F. It is more likely however, that the cooler near surface water is in the range of 50-55⁰F.

The net conservative result is nominally a 50/50 dilution, giving the following geochemical temperature indications:

Silica	158 ⁰ F
Na/K/Ca	135 ⁰ F

These results are in good agreement and support the previously selected production target zone below 2,000 feet. This well is the single most definitive evidence for a viable geothermal resource in the area. It indicates that the minimum temperature required (120⁰F) is present and can be recovered at a reasonable depth. The production rate (1,000 gpm) and drawdown (110 feet after 6 days) indicates that the geothermal well can be expected to produce a reasonable flow rate over a 6 month period. The valley fill material apparently extends down to approximately 3,500 feet in the vicinity of Utah Roses and the permeability should not result in production rates less than half of those in the Conservancy Well. If faulted and/or fracture zones are encountered, the estimated production rates and temperatures could be greatly increased.

Assumes permeability will not change with depth, or that permeability is predictable in the targeted zone. These are not good assumptions

6. Other Area Warm Wells

There are numerous other warm wells that occur around the Utah Roses area. These wells have not been discussed in detail due to the limited information concerning them and the fact that the Conservancy Well data is much more definitive and site specific. The fact the other wells exist indicates that geothermal waters are leaking away from the primary fault sources and can be located in selected permeable aquifers at depth.

However, there is data available from the driller's log of one other well that is important and should be noted. This well is located at approximately 150 East 10600 South (11,000 feet southeast of Utah Roses) and was drilled by Sandy City. See Figure 2. The well was drilled in late 1958 and early 1959 to a total depth of 1150 feet. It was pump tested at 1,000 gpm and the drawdown was 79 feet over an unknown time period. The static water level was 71 feet and the drawdown dropped the level to 150 feet.

During the 1,000 gpm pump test, the well flowed water at 90⁰F. The well was then plugged with rock and 300 lbs of lead wool between 722 and 740 feet. The reported temperature of the water produced above 722 feet was still 82⁰F. Another plug was placed between 385 and 415 feet (rock and 3,000 lbs of lead wool. The produced water temperature above this plug (385 feet) was still a reported 72⁰F. The well was then plugged with rock and cement from 315 to 355 feet and left undeveloped.

Again, this well demonstrates that [?]> 100⁰F geothermal waters are present in the area at depth. It is estimated that the maximum downhole temperature of this well would be in the 100 - 110⁰F range. The well casing was essentially perforated from 252 feet to total depth and the colder waters from above 385 feet were continually mixing with the geothermal water originating deeper.

*might be best assu
in entire report.*

G. GEOHERMAL RESOURCE POTENTIAL SUMMARY

1. Geothermal Hydrology

It appears that the geothermal waters are present within the major area fault zones and move laterally and upward in them to points of reduced pressure. There is apparent lateral leakage of the waters away from the fault sources into some permeable beds. The hottest and most productive wells (for a given depth) can be expected when they are drilled into the faulted and fractured zones. However, it appears that good production and temperatures can also be located away from the fault zones if permeable beds are encountered and/or the wells are drilled to the quartzite bedrock. The possibility that a fault zone may exist within 2,600 feet of the Utah Roses property and the downhole temperatures encountered in the Conservancy Well (93⁰F) and Sandy City well (> 100⁰F) to make the Utah Roses property an excellent geothermal prospect. The success of this project will have a great impact on the Jordan Valley in terms of alternate energy resources.

2. Production Well

The production well will be located close to the possible E-W trending fault passing through Sandy. The Utah Roses, Inc. greenhouse complex is in an ideal location and a convenient site has been selected on their property. The production of the well will be dependent upon the permeability of the production zone however. In order to maximize the production rates and temperatures the well should be drilled to a depth that ^{Assumes that these are present} (will encounter permeable beds.) The well location should result in the intersection of the wellbore and fractured zone to obtain the required temperature and permeability at a depth of no more than 3,000 feet. Reasonable well production rates and water temperature should then be encountered from that point and deeper to a maximum anticipated depth of 4,000 feet.

Why assume that the production zone is 1000' + thick

3. Injection Well

This well should be located within the influence of the geothermal resource so it can be used as a geothermal monitoring well during testing of the production well. This well will provide data that can then be used to estimate the geothermal reservoir characteristics and response during long term production conditions. Also, the well should be sited for later use as an injection well (in the zone directly above the geothermal production) or back up production well (by drilling deeper into the production zone).

H. DRILLING PROGNOSIS

The drilling of the production and injection wells will be primarily accomplished in the unconsolidated to semi-consolidated valley fill material. If it is necessary to drill the production well beyond 3,200 feet, the quartzite bedrock will be a limiting factor unless highly altered or fractured. The fill material just above the quartzite should be an excellent target zone. The rock types may present two problems for the well driller. The first will be the boulders and cobbles that might necessitate remedial measures (cementing) in order to drill through with a rotary rig. The second might be a tendency for the hole to cave. Light mud should control this problem although it may make the geothermal resource slightly more difficult to detect. Periodic temperature surveys will be taken in the borehole during drilling to minimize the difficulty of detecting the resource with mud in the hole.

A third problem must be anticipated concerning the resource itself. The production zone will probably be under a low confining pressure head (10-40 psig) and water above 120⁰F can cause severe burns. Again, the use of a light mud base drilling fluid as well as shut-off valve and flow line installation during drilling will control this problem.

All aspects of the drilling should be well within the normal operation of water well drillers and current techniques.

I. REFERENCES

1. R.E. Mattick (USGS), "Thickness of Unconsolidated to Semi-Consolidated Sediments In Jordan Valley, Utah," USGS Prof. Paper 700-C, (1970).
2. A. W. Mavine and D. Price (USGS), "Geology and Ground-Water Resources of the Jordan Valley, Utah, "Utah Geological and Mineralogical Survey, Water-Resources Bulletin 7 (December 1964).
3. J. C. Mundorff (USGS), "Major Thermal Springs of Utah", Utah Geological and Mineralogical Survey, Water-Resources Bulletin 13 (September 1970).
4. Guidebook to the Geology of Utah, Number 8 collection of papers, "Geology of the Central Wasatch Mountains, Utah, "Utah Geological and Mineralogical Survey (1952).
5. Guidebook to the Geology of Utah, Number 18, collection of papers "The Wasatch Fault Zone in North Central Utah, "Utah Geological and Mineralogical Survey (1964).

To: Sue
Franso Derybe
RE: 9RL

Please make the following reservations for
both Eve & me.

Thurs 11/5

LV 9/22
Western # 675
Lv. 6:40 → Arr. 6:50 (cont)

RI 9/28
Western # 3441
Lv. 4:10 → Arr. 6:13 (cont)

TRIB- 24 Oct 79

the present practice and ban smoking throughout district, or relax the present practice and allow school employees to smoke in designated areas.

On the action side of Tuesday's meeting, the board opted low bids for two construction jobs and set date for the sale of \$23 million in building bonds.

Thorup Brothers Construction was awarded the contract to build Riverside Elementary School at 8650 1250 West for \$2,357,200. They have 380 days to complete the job.

Dave Lloyd Construction will build an addition on 14th Valley Enterprises, an alternative school, for \$600.

The \$23 million bond sale, which will finance a new high school and at least one elementary school, will begin at 7 p.m. Nov. 13 at school district offices.

Rock Springs.....	54	27
Sheridan.....	64	31
Colorado		
Denver.....	66	35
Grand Junction.....	64	37
Pacific States		
Anchorage.....	37	34
Fairbanks.....	31	24
Honolulu.....	86	71
Juneau.....	50	46
Los Angeles.....	84	60
Portland.....	65	54
San Diego.....	73	58
San Francisco.....	72	60
Seattle.....	62	49
Spokane.....	55	45
Midwest		
Bismarck.....	50	16
Chicago.....	44	39
Detroit.....	46	42
Duluth.....	42	34
Kansas City.....	54	34
Minneapolis.....	48	37
Oklahoma City.....	72	39
Omaha.....	50	44

WITH OCCASIONAL HIGH CLOUDINESS through Wednesday. Increasing clouds and windy Thursday. Chance of showers developing northwest by afternoon. Lows in 30s to mid-40s. Highs in 60s and low 70s Wednesday and 65 to 75 Thursday.

Nevada — Fair with variable high

Friday. Partly cloudy on Saturday. Increasing cloudiness with chance for mountain snow again Sunday. Lows in the low and mid-30s except mid-20s northwest. Highs in the 60s, except mid-50s northwest and mountain areas.

TUESDAY

Air Pollution Index Chart

The following indices were calculated by the State Division of Health as of 3 p.m. Tuesday.

The health advisory code for the indices are: zero to 50, very good; 50 to 100, good; 100 to 200, marginal; 200 to 300, poor, and 300 to 500, hazardous.

	Total Suspended Particulates	Sulphur Dioxide	Carbon Monoxide	Ozone	Nitrogen Dioxide
Salt Lake City	53		66	26	
Ogden			66	36	
Bountiful			33	43	
Magna		59			
Provo				32	

Weeks Mill Levy Hike

Davis Plans Schools Vote

By Terri Ellefsen
Tribune Staff Writer

ARMINGTON — The Davis Board of Education will ask Davis County voters Nov. 27 if they will give the board authority to increase the present mill levy by 4 mills.

That decision came during a special meeting called by the board Tuesday night. The board voted 4-1 in favor of the proposal, with Dee Forbes' opposition. Mr. Forbes said he would have preferred to ask for a lower amount.

The proposal, stated on the ballot, will ask the public for a voted leeway to authorize the district to have a 4-mill increase. If passed, the district would increase the mill levy by at least 2 mills.

A 2-mill addition would result in a \$20 increase for a homeowner with a \$10,000 house. The district would be allowed to collect from this same homeowner, an additional \$10 for each mill levied, up to the 4-mill limit. The district would be able to generate \$1.8 million for a 2-mill levy.

The increased mill levy would bring in more money for the district's maintenance and operation.

Bernell Wrigley, district superintendent, said that an earlier vote by the

exist which would demand additional sources of income," said Mr. Wrigley. "We also recognize inflation."

He also said that demands by the federal government to provide certain programs for some of the students has increased the money crunch. He said the federal government demands that the districts provide for the handicapped, provide equally for boys and girls, and teach all students in the language they understand.

"These are some instances of federal regulations that place additional expense on schools," said Mr. Wrigley. "The federal government has never appropriated money yet to meet the needs. And, funds received from the federal government are decreasing."

Sheryl Allen, a member of the board, said the board had three choices to free the district from its money worries.

The district can ask for authorization to raise the mill levy, it can vote to raise the mill levy itself, or make drastic cuts.

If the district goes to the public for authorization to raise the levy, it can obtain an additional \$230,000 from the state for each mill levied. This would apply up to 2 mills.

Each mill would pick up \$330,000 for the district. With the state funds, this

Geothermal Power Due for Provo?

PROVO (AP) — City officials are studying a proposal to use geothermal energy for as much as 30 percent of Provo's future power needs.

Presently 90 percent of the city's power is hydro-generated from the Colorado River Storage Project.

"But we've outgrown the Colorado River power," said Bud Bonnett, city utilities director. "It's at capacity now, and we can't get more power from the source. It looks like geothermal may supply as much as 30 percent of Provo's power in the future."

He said a Kansas City consulting firm has recommended geothermal power to the city as a very good, economical source of power in the long run.

Bonnett said the slightly higher costs of producing geothermal power is due to the need to drill wells, build a power plant and transfer the power.

But while costs are higher, long-term benefits may be greater.

"There is no fuel involved like a gas or coal plant, and there is less manpower involved," said Bonnett. "Also, the pollution problems aren't there."

Elects New Leaders

Officers for the steering committee of Salt Lake County's Division of Community Development federally funded block grant program were chosen

Mr. and Mrs. Gary Howland, 810 E. Vine, daughter.

Mr. and Mrs. Robert M. Lowe, 713 Starcrest Dr., daughter.

Mr. and Mrs. Robert Homer, 4020 S. 6740 West, Hunter, son.

Mr. and Mrs. David Daniels, 182 S. 1000 East, Bountiful, son.

Mr. and Mrs. Matthew Scott, 5439 Collier Dr., Kearns, daughter.

Mr. and Mrs. Randall Nielson, 3709 S. 545 East, daughter.

Mr. and Mrs. Craig M. Jacobson, 1970 Redondo, daughter.

Mr. and Mrs. V. Robert Peterson, 2398 Granite Hills Dr., Sandy, daughter.

Mr. and Mrs. Michael Muir, 6901 S. 2700 West, West Jordan, son.

Mr. and Mrs. Timothy Peel, 7873 Greenwood Ave., Magna, daughter.

Holy Cross Hospital

Mr. and Mrs. Kenley Ray Taylor, 3100 Midwest Dr., son.

Mr. and Mrs. Ivo Shanks, 160 Clinton Ave., son.

Mr. and Mrs. Ed Richmond, 744 W. Porters Ln., son.

Mr. and Mrs. Sengoumouth Kosanouvong, 323 E. 700 South, son.

Mr. and Mrs. Tevita Havili, 439 E. 700 South, son.

Mr. and Mrs. David J. Carlton, 7550 Goldenrod St., Magna, son.

Mr. and Mrs. Dean Selack, 1401 Lexington Dr., Sandy, daughter.

Mr. and Mrs. Robert Hill, 4137 Holloway Dr., daughter.

Mr. and Mrs. Alan Gatrell, 743 Linden Ave., daughter.

Mr. and Mrs. Jon Collins, 35 S. 1040 West, daughter.

Mr. and Mrs. Jerry M. Campbell, 2940 W. 7380 South, West Jordan, daughter.

Cottonwood Hospital

Mr. and Mrs. Kim Burton, 10201 S. 1300 West, South Jordan, daughter.

Mr. and Mrs. Michael Caron, 504 E. Mount View Cl., Sandy, son.

Mr. and Mrs. Richard Christensen, 991 W. 1000 North, twin daughters.

Mr. and Mrs. Wallace Cook, 740 E. 900 South, daughter.

Mr. and Mrs. Thinh Dinh, 321 Starcrest Dr., son.

Mr. and Mrs. Paul Kanehara, 3343 S. Mockinbird Way, Granger, daughter.

Mr. and Mrs. Bruce LePrey, 488 Mount View Cl., Sandy, daughter.

Mr. and Mrs. M. Wayne Miller, 422 E. 10230 South, Sandy, son.

Mr. and Mrs. William Post, 10420 Silver Mountain Dr., Sandy, daughter.

Mr. and Mrs. Raymond Rose, Rock Springs, Wyo., daughter.

Mr. and Mrs. Steven Walters, 4338 Early Duke St., Hunter, son.

University Hospital

Mr. and Mrs. Vislor Goldberg, 754 University Village, son.

Mr. and Mrs. Gene Snow, 8735 S. 2700 West, No. 3, West Jordan, son.

Lakeview Hospital

Mr. and Mrs. Donald Peck, 714 N. Main, Centerville, son.

Mr. and Mrs. Jay Niederhauser, 5228 E. Eden Green, daughter.

Ellen Steele Greenwood

MAGNA — Ellen Alice Steele Greenwood, 87, died October 22, 1979, in a Salt Lake nursing home.

Born January 22, 1892, American Fork, to Richard Reese and Alice Mitchell Steele. Married Frank Wilford Greenwood, December 9, 1913, Salt Lake City. He died September 5, 1965. Member LDS Church.

Survived by daughter, Mrs. Earl (Helen) Fehr, Murray; nine grandchildren, nineteen great-grandchildren, three sons predeceased her in death.

Funeral services will be held Saturday at 12:30, at Peel Funeral Home, 8525 West 2700 South, Magna. Where friends may call Friday 7:00-8:00 p.m. and Saturday one hour prior to services.

Interment, American Fork Cemetery. Family suggest in lieu of flowers contributions be made to Blind Center.

John 'Jack' W. Jewett

MURRAY — John "Jack" W. Jewett, 62, died Oct. 23, 1979, in a Murray hospital.

Born June 9, 1917, Murray, to John and Edith Riley Jewett. Retired from Utah Power & Light, where he worked for 30 years. Served in World War II in the South Pacific.

Survivors: sister, Mrs. Margaret Woolsey, Midvale; George Jewett, Murray; nephews, nieces, Wayne, Dean Woolsey, Midvale; Colleen, Ellen Jewett, Murray; aunt, Mrs. Ellen Johnson, Salt Lake City.

Funeral services Friday, 1 p.m., Jenkins-Soffe Mortuary, 4760 So. State, where friends may call Thursday, 6-8 p.m., and Friday one hour prior to services. Interment, Murray City Cemetery.

Ervin 'Bud' Malliet

Ervin Frank "Bud" Malliet, 58, of Salt Lake City, died Oct. 22, 1979, at home.

Born Feb. 12, 1921, Green Bay, Wis., to Albert and Elizabeth Jacobs Malliet. Member, Catholic Church. Veteran, WW II. Part-owner and driver for H&M Trucking. Established Appaloosa horse breeder.

Survivors: brothers, sisters, Gordon Malliet, Edward Malliet, Mrs. Tony (Mabel) Steffens, Mrs. Ann Ritz, Mrs. Beatrice Steffens and Mrs.

