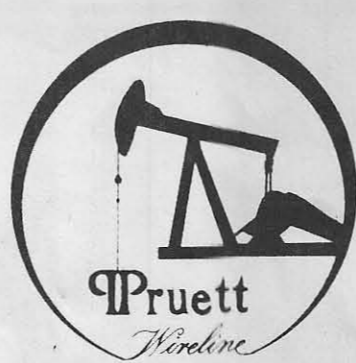


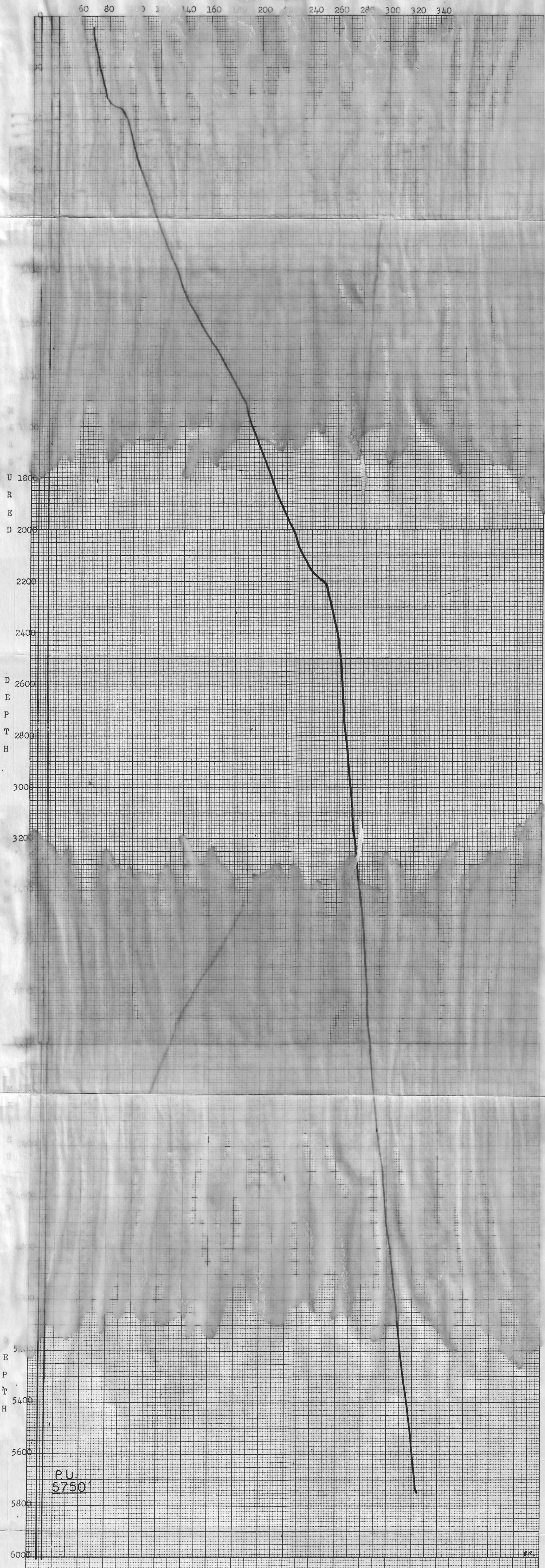
# PRUETT WIRELINE SERVICE

8915 ROSEDALE HWY., BAKERSFIELD, CA 93308  
(805) 589-2768



## SUB-SURFACE TEMPERATURE SURVEY

COMPANY Chevron Resources FIELD Heber WELL NAME GTW #5  
 TOTAL DEPTH 7088' WELL STATUS Static BOMB HUNG @ none DATE Nov 13, 1981  
 CASING 9 5/8" @ 1000' CASING PRESSURE -0- TIME ON BOTTOM 12:38 ELEMENT RANGE 50-485°  
 LINER --- TUBING PRESSURE --- TIME OFF BOTTOM 12:55 ZERO POINT 16'  
 PERFORATIONS --- ZONE --- SHUT IN --- ELEVATION ---  
 MPP --- MAX °F 324.40° ON PRODUCTION --- PICKUP 5750'  
 TUBING DEAIL 2 7/8" @ 3995', 2 3/8" @ 3995'-6522' PURPOSE Traverse Temperature @ 20' per minute



### SURVEY DATA

DEPTH	TEMP	DEPTH	TEMP	DEPTH	TEMP	DEPTH	TEMP	DEPTH	TEMP	DEPTH	TEMP
40	67.18	1000	134.22	1960	221.44	2920	269.24	3880	285.38	4840	303.77
60	67.59	1020	135.45	1980	222.87	2940	269.65	3900	285.58	4860	304.17
80	68.21	1040	136.27	2000	225.73	2960	270.06	3920	285.79	4880	304.58
100	68.82	1060	137.70	2020	226.75	2980	270.47	3940	285.99	4900	304.99
120	69.44	1080	139.75	2040	227.77	3000	270.88	3960	286.40	4920	305.40
140	70.25	1100	141.19	2060	228.79	3020	271.08	3980	286.81	4940	305.81
160	71.07	1120	143.44	2080	230.43	3040	271.28	4000	287.01	4960	306.42
180	71.69	1140	145.90	2100	232.67	3060	271.49	4020	287.22	4980	307.03
200	72.51	1160	147.75	2120	235.53	3080	272.10	4040	287.42	5000	307.65
220	73.33	1180	150.21	2140	237.78	3100	272.31	4060	287.63	5020	307.85
240	74.36	1200	152.05	2160	239.62	3120	272.51	4080	287.83	5040	308.26
260	75.59	1220	154.92	2180	245.14	3140	272.92	4100	288.04	5060	308.67
280	76.41	1240	157.84	2200	250.04	3160	273.33	4120	288.24	5080	309.08
300	77.64	1260	159.84	2220	252.08	3180	274.14	4140	288.65	5100	309.78
320	78.66	1280	162.30	2240	252.69	3200	274.76	4160	289.0	5120	309.89
340	79.53	1300	165.17	2260	253.72	3220	275.17	4180	289.4	5140	311.10
360	80.53	1320	167.02	2280	254.75	3240	275.37	4200	289.8	5160	311.51
380	81.50	1340	169.44	2300	255.78	3260	275.78	4220	290.2	5180	311.71
400	82.44	1360	171.25	2320	256.81	3280	276.19	4240	290.6	5200	311.92
420	83.37	1380	173.11	2340	257.84	3300	276.59	4260	291.0	5220	312.13
440	84.28	1400	175.01	2360	258.87	3320	277.0	4280	291.4	5240	312.34
460	85.17	1420	176.94	2380	259.9	3340	277.41	4300	291.8	5260	312.55
480	86.04	1440	178.91	2400	260.93	3360	277.82	4320	292.2	5280	312.76
500	86.89	1460	180.92	2420	261.96	3380	278.23	4340	292.6	5300	312.97
520	87.72	1480	182.97	2440	262.99	3400	278.64	4360	293.0	5320	313.18
540	88.53	1500	185.06	2460	264.02	3420	279.05	4380	293.4	5340	313.39
560	89.32	1520	187.19	2480	265.05	3440	279.46	4400	293.8	5360	313.60
580	90.09	1540	189.36	2500	266.08	3460	279.87	4420	294.2	5380	313.81
600	90.84	1560	191.57	2520	267.11	3480	280.28	4440	294.6	5400	314.02
620	91.57	1580	193.82	2540	268.14	3500	280.69	4460	295.0	5420	314.23
640	92.28	1600	196.11	2560	269.17	3520	281.1	4480	295.4	5440	314.44
660	92.97	1620	198.44	2580	270.2	3540	281.51	4500	295.8	5460	314.65
680	93.64	1640	200.81	2600	271.23	3560	281.92	4520	296.2	5480	314.86
700	94.29	1660	203.22	2620	272.26	3580	282.33	4540	296.6	5500	315.07
720	94.92	1680	205.67	2640	273.29	3600	282.74	4560	297.0	5520	315.28
740	95.53	1700	208.16	2660	274.32	3620	283.15	4580	297.4	5540	315.49
760	96.12	1720	210.69	2680	275.35	3640	283.56	4600	297.8	5560	315.70
780	96.69	1740	213.26	2700	276.38	3660	283.97	4620	298.2	5580	315.91
800	97.24	1760	215.87	2720	277.41	3680	284.38	4640	298.6	5600	316.12
820	97.77	1780	218.52	2740	278.44	3700	284.79	4660	299.0	5620	316.33
840	98.28	1800	221.21	2760	279.47	3720	285.2	4680	299.4	5640	316.54
860	98.77	1820	223.94	2780	280.5	3740	285.61	4700	299.8	5660	316.75
880	99.24	1840	226.71	2800	281.53	3760	286.02	4720	300.2	5680	316.96
900	99.69	1860	229.52	2820	282.56	3780	286.43	4740	300.6	5700	317.17
920	100.12	1880	232.37	2840	283.59	3800	286.84	4760	301.0	5720	317.38
940	100.53	1900	235.26	2860	284.62	3820	287.25	4780	301.4	5740	317.59
960	100.92	1920	238.19	2880	285.65	3840	287.66	4800	301.8	5760	317.80
980	101.29	1940	241.16	2900	286.68	3860	288.07	4820	302.2	5780	318.01
1000	101.64	1960	244.17	2920	287.71	3880	288.48	4840	302.6	5800	318.22
1020	101.97	1980	247.22	2940	288.74	3900	288.89	4860	303.0	5820	318.43
1040	102.28	2000	250.31	2960	289.77	3920	289.3	4880	303.4	5840	318.64
1060	102.57	2020	253.44	2980	290.8	3940	289.71	4900	303.8	5860	318.85
1080	102.84	2040	256.61	3000	291.83	3960	290.12	4920	304.2	5880	319.06
1100	103.09	2060	259.82	3020	292.86	3980	290.53	4940	304.6	5900	319.27
1120	103.32	2080	263.07	3040	293.89	4000	290.94	4960	305.0	5920	319.48
1140	103.53	2100	266.36	3060	294.92	4020	291.35	4980	305.4	5940	319.69
1160	103.72	2120	269.69	3080	295.95	4040	291.76	5000	305.8	5960	319.90
1180	103.89	2140	273.06	3100	296.98	4060	292.17	5020	306.2	5980	320.11
1200	104.04	2160	276.47	3120	298.01	4080	292.58	5040	306.6	6000	320.32
1220	104.17	2180	279.92	3140	299.04	4100	292.99	5060	307.0		
1240	104.28	2200	283.41	3160	300.07	4120	293.4	5080	307.4		
1260	104.37	2220	286.94	3180	301.1	4140	293.81	5100	307.8		
1280	104.44	2240	290.51	3200	302.13	4160	294.22	5120	308.2		
1300	104.49	2260	294.12	3220	303.16	4180	294.63	5140	308.6		
1320	104.52	2280	297.77	3240	304.19	4200	295.04	5160	309.0		
1340	104.54	2300	301.46	3260	305.22	4220	295.45	5180	309.4		
1360	104.54	2320	305.19	3280	306.25	4240	295.86	5200	309.8		
1380	104.52	2340	308.96	3300	307.28	4260	296.27	5220	310.2		
1400	104.48	2360	312.77	3320	308.31	4280	296.68	5240	310.6		
1420	104.42	2380	316.62	3340	309.34	4300	297.09	5260	311.0		
1440	104.34	2400	320.51	3360	310.37	4320	297.5	5280	311.4		
1460	104.24	2420	324.44	3380	311.4	4340	297.91	5300	311.8		
1480	104.12	2440	328.41	3400	312.43	4360	298.32	5320	312.2		
1500	103.98	2460	332.42	3420	313.46	4380	298.73	5340	312.6		
1520	103.82	2480	336.47	3440	314.49	4400	299.14	5360	313.0		
1540	103.64	2500	340.56	3460	315.52	4420	299.55	5380	313.4		
1560	103.44	2520	344.69	3480	316.55	4440	299.96	5400	313.8		
1580	103.22	2540	348.86	3500	317.58	4460	300.37	5420	314.2		
1600	102.98	2560	353.07	3520	318.61	4480	300.78	5440	314.6		
1620	102.72	2580	357.32	3540	319.64	4500	301.19	5460	315.0		
1640	102.44	2600	361.61	3560	320.67	4520	301.6	5480	315.4		
1660	102.14	2620	365.94	3580	321.7	4540	302.01	5500	315.8		
1680	101.82	2640	370.31	3600	322.73	4560	302.42	5520	316.2		
1700	101.48	2660	374.72	3620	323.76	4580	302.83	5540	316.6		
1720	101.12	2680	379.17	3640	324.79	4600	303.24	5560	317.0		
1740	100.74	2700	383.66	3660	325.82	4620	303.65	5580	317.4		
1760	100.34	2720	388.19	3680	326.85	4640	304.06	5600	317.8		
1780	99.92	2740	392.76	3700	327.88	4660	304.47	5620	318.2		
1800	99.48	2760	397.37	3720	328.91	4680	304.88	5640	318.6		
1820	99.02	2780	402.02	3740	330.0	4700	305.29	5660	319.0		
1840	98.54	2800	406.71	3760	331.09	4720	305.7	5680	319.4		
1860	98.04	2820	411.44	3780	332.18	4740	306.11	5700	319.8		
1880	97.52	2840	416.21	3800	333.27	4760	306.52	5720	320.2		
1900	96.98	2860	421.02	3820	334.36	4780	306.93	5740	320.6		
1920	96.42	2880	425.87	3840	335.45	4800	307.34	5760	321.0		
1940	95.84	2900	430.76	3860	336.54	4820	307.75	5780	321.4		
1960	95.24	2920	435.69	3880	337.63	4840	308.16				