

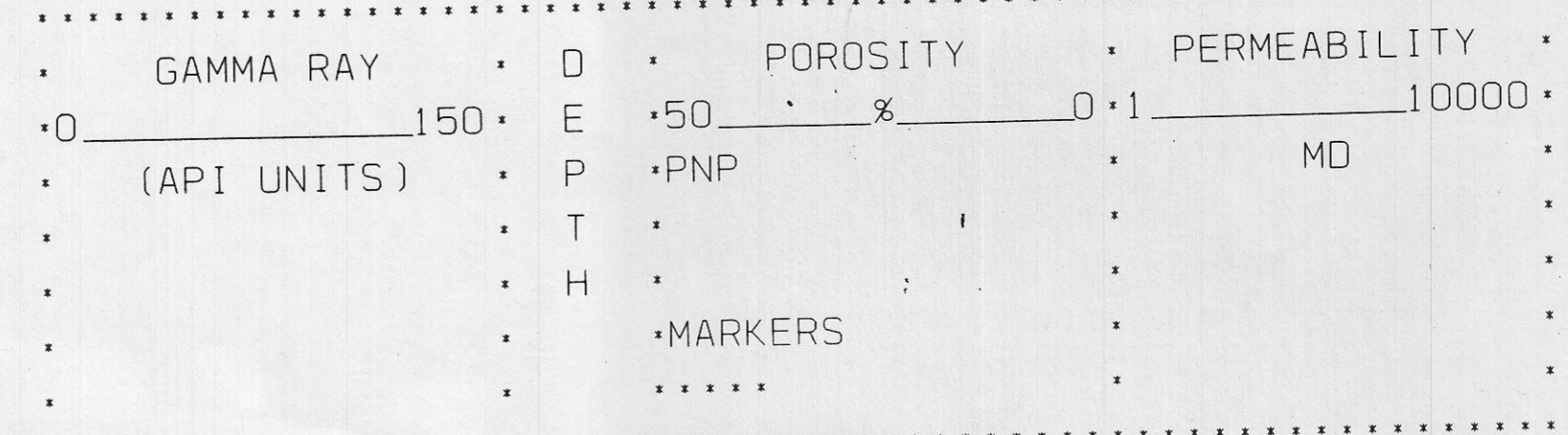
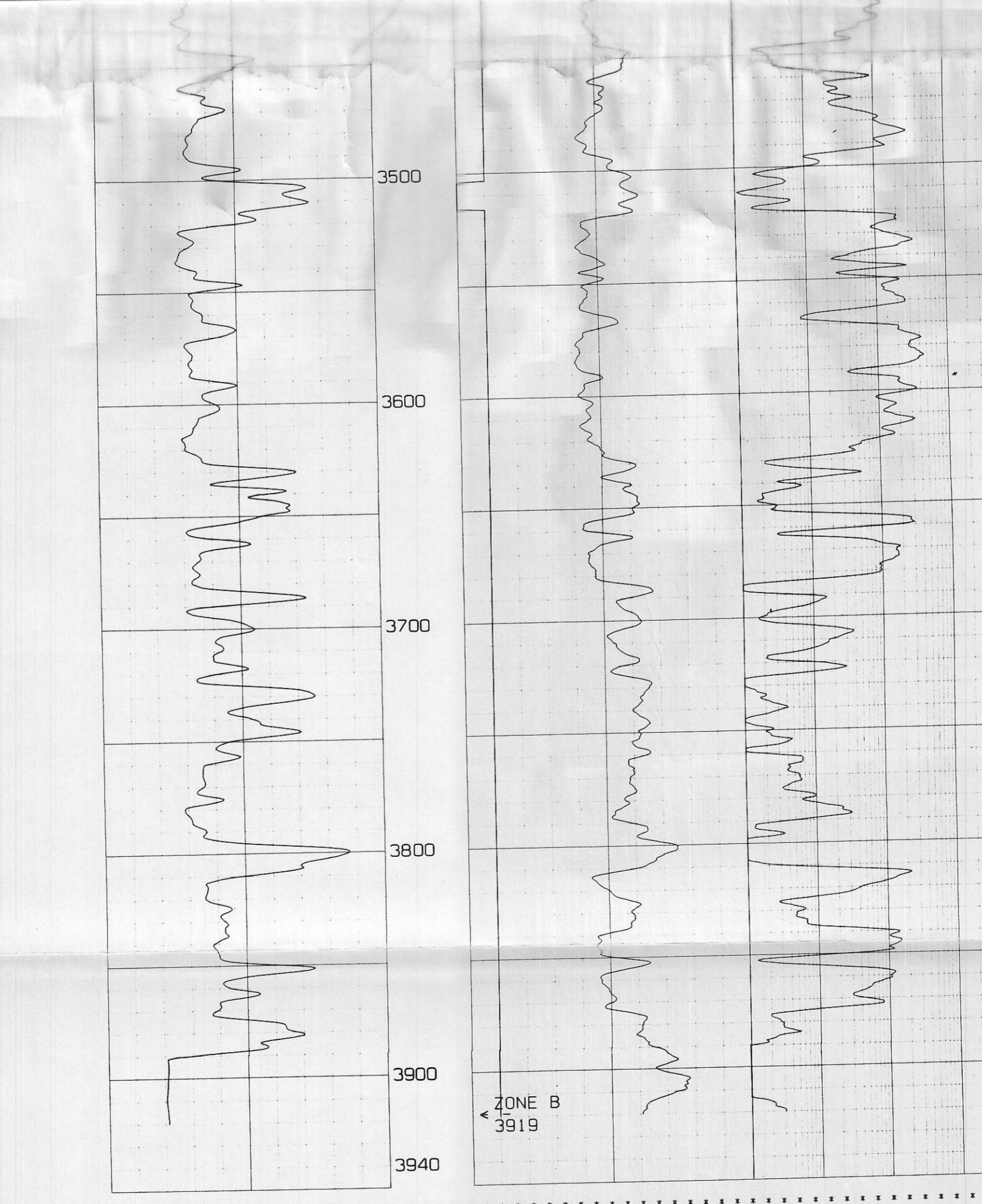
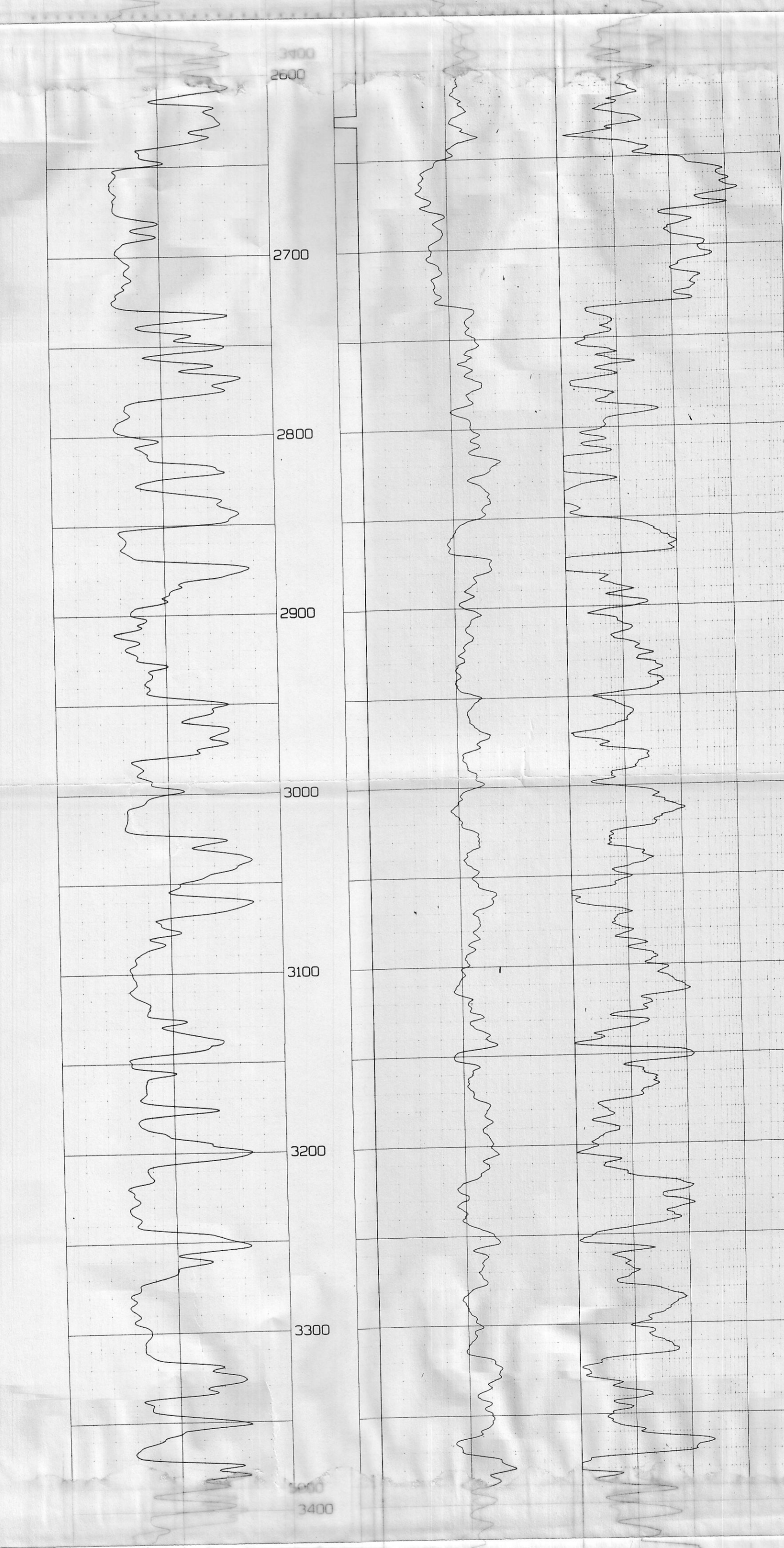
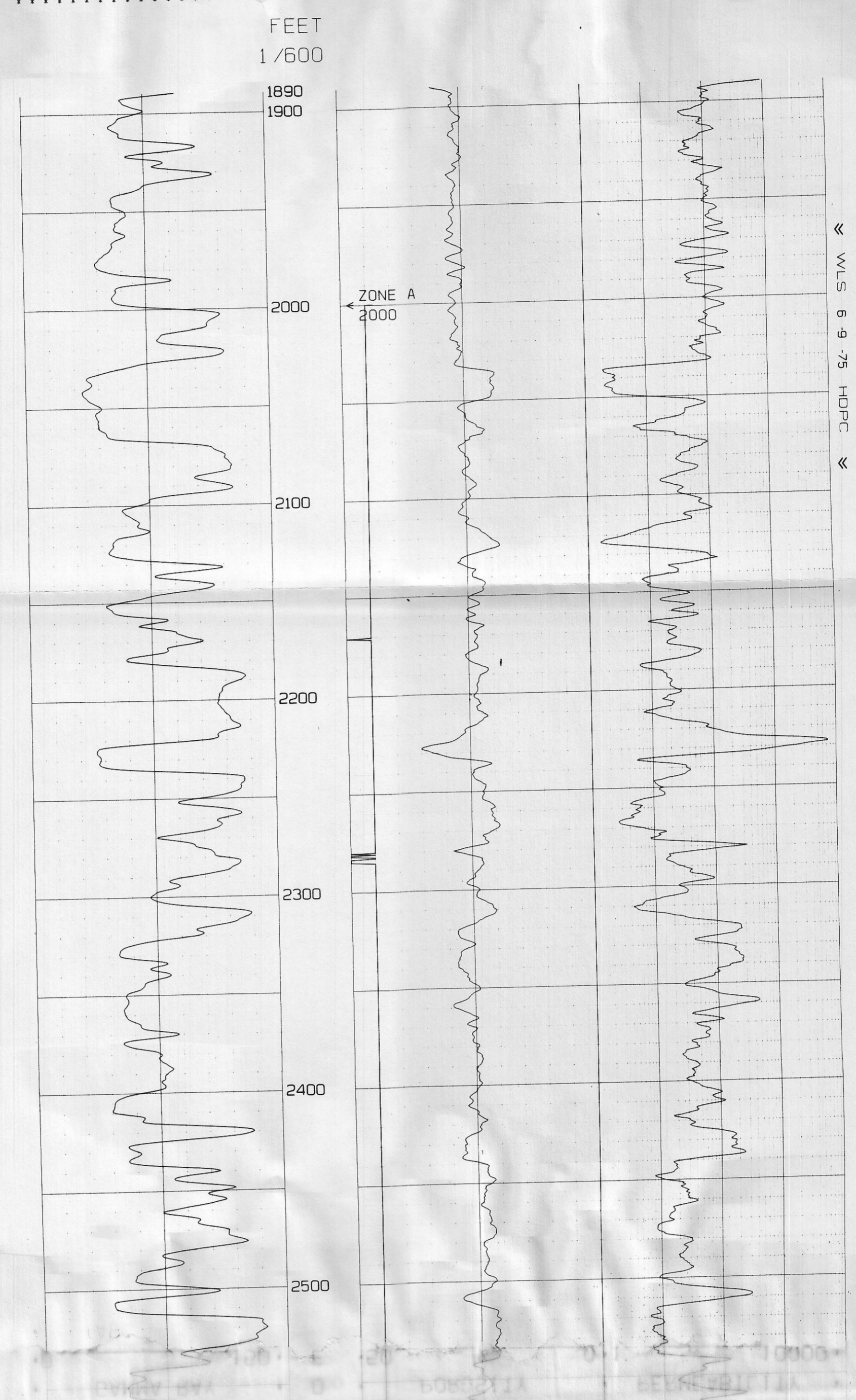
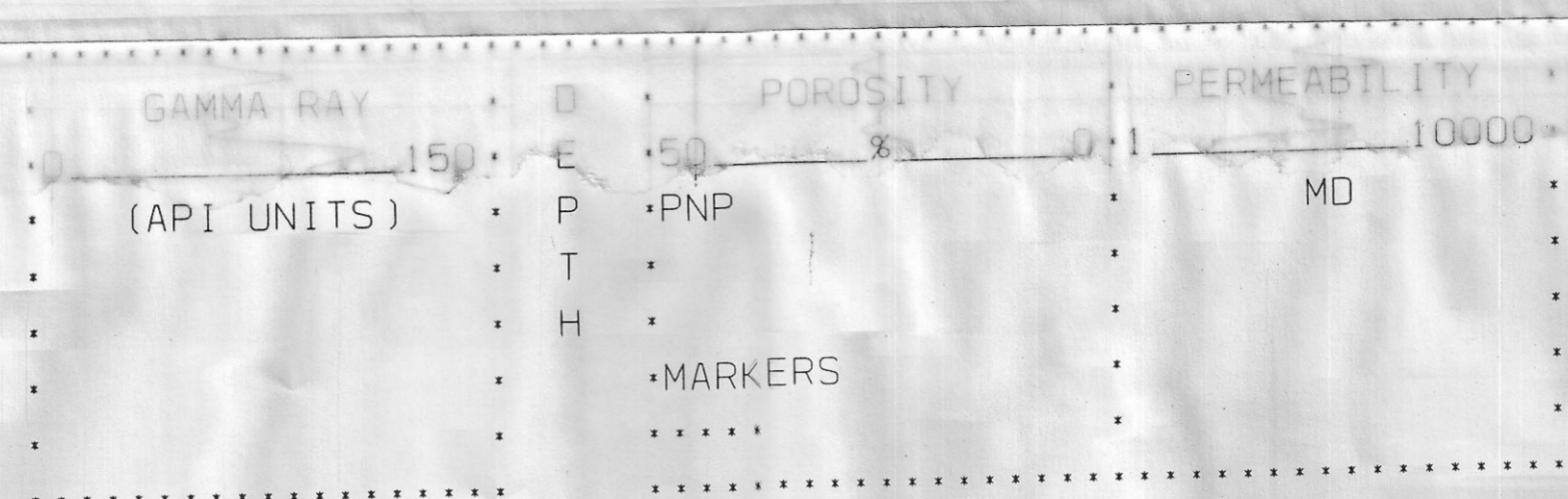
POROSITY PERMEABILITY  
DISPLAY PLOT

WELL HEBER  
COUNTY IMPERIAL  
STATE CALIFORNIA  
COUNTRY U.S.A.

WELL IDENTIFICATION  
 COMPANY CHEVRON OIL COMPANY  
 WELL CHEVRON GTW NO 3  
 FIELD HEBER  
 COUNTY IMPERIAL  
 STATE CALIFORNIA  
 COUNTRY U.S.A.

API NO  
 DATUM KB  
 ELEVTN 10 FT.  
 LOCATN S34 T16S R14E

PROJECT RECORD	INPUT DATA
COMPANY CHEVRON OIL CO	CURVES
PROJECT HEBER CONTACT	DRCTNL
DATA PROCESSING RECORD	DIPS
PROJECT HC0217	MARKERS
WELL HCW6731	CORE
DATE JUNE 1975	PARAMS
ANALYST JHM	
REMARKS	



INPUT PARAMETERS  
 SHALLOW POROSITY-POR X .8065 .0487  
 DEEP POROSITY-POR X 1.6747 -.1132  
 SHALLOW PERM-SPOR X 21.8933 -3.7962 (LOGK)  
 DEEP PERM-SPOR X 13.6099 -0.9135 (LOGK)