

AGNEW AND SWEET

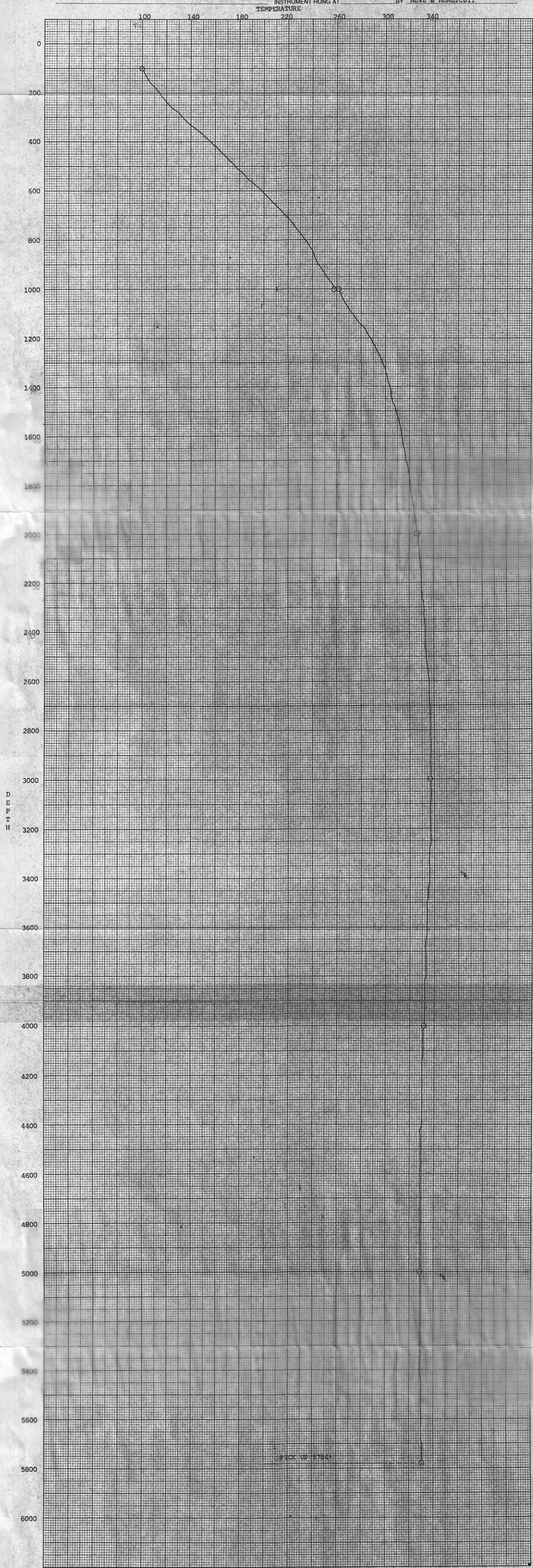
WIRELINE SERVICE

PHONE (805) 327-2267
3914 GILMORE AVENUE
BAKERSFIELD, CALIFORNIA 93308

SUBSURFACE TEMPERATURE SURVEY

OWNER CHEVRON OIL COMPANY FIELD HEBER WELL NAME C. B. JACKSON

WELL DATA		SURVEY CONDITIONS	
ZERO POINT	Ground + 16'	DATE	May 15, 1977
ELEVATION		PURPOSE	STATIC TEMPERATURE SURVEY
CASING	917'	REMARKS	STOPS EVERY 1000 FEET
			TRAVERSE 20' / MINUTE
			1 1/2 HOUR 15 TURN (Casing) TUBING <input type="checkbox"/> ANNULUS
LINE DESCRIPTION		INSTRUMENT	18" x 648" F. SERIAL NUMBER 10025
		MAX. TEMPERATURE	336.5 F. AT 3260'
TUBING DETAIL	none	SHUT IN	STABILIZATION PERIOD
		PICK UP	5784'
		STATUS	STATIC
		TIME ON BOTTOM	1:04 pm
		TIME OFF BOTTOM	1:14 pm
		INSTRUMENT HUNG AT	TEMPERATURE
			BY NEVE & HONEYCUTT



SUB-SURFACE TEMPERATURE DATA

DEPTH	TEMP. °F	DEPTH	TEMP. °F	DEPTH	TEMP. °F	DEPTH	TEMP. °F	DEPTH	TEMP. °F	DEPTH	TEMP. °F
100	100.2	1040	264.9	2000	326.0	2940	336.5	3900	332.1	4860	329.1
120	101.5	1060	267.1	2020	326.6	2960	336.5	3920	331.8	4880	329.1
140	104.1	1080	269.9	2040	326.9	2980	336.5	3940	331.8	4900	329.1
160	107.0	1100	272.9	2060	327.2	3000	336.5	3960	331.5	4920	329.1
180	111.2	1120	276.0	2080	327.9	3020	336.5	3980	331.5	4940	329.1
200	113.7	1140	279.1	2100	328.1	3040	336.5	4000	331.5	4960	329.1
220	117.0	1160	282.5	2120	328.5	3060	336.5	4020	331.2	4980	329.1
240	120.2	1180	285.3	2140	328.8	3080	336.5	4040	331.2	5000	329.1
260	123.7	1200	287.8	2160	329.4	3100	336.5	4060	330.9	5020	329.1
280	128.9	1220	289.9	2180	329.7	3120	336.5	4080	330.6	5040	329.1
300	132.7	1240	292.1	2200	330.0	3140	336.5	4100	330.6	5060	329.1
320	137.2	1260	293.9	2220	330.3	3160	336.5	4120	330.6	5080	329.1
340	142.4	1280	295.8	2240	330.3	3180	336.5	4140	330.3	5100	329.1
360	146.8	1300	297.3	2260	330.6	3200	336.5	4160	330.3	5120	329.1
380	150.9	1320	298.6	2280	331.2	3220	336.5	4180	330.3	5140	329.1
400	155.6	1340	300.1	2300	331.5	3240	336.5	4200	330.3	5160	329.1
420	160.0	1360	301.3	2320	331.8	3260	336.5	4220	330.3	5180	329.1
440	163.8	1380	302.3	2340	332.1	3280	336.2	4240	330.0	5200	329.1
460	168.2	1400	303.5	2360	332.4	3300	336.2	4260	330.0	5220	329.1
480	172.6	1420	304.4	2380	332.7	3320	335.9	4280	330.0	5240	329.1
500	176.1	1440	305.3	2400	332.7	3340	335.9	4300	329.7	5260	329.1
520	180.8	1460	306.3	2420	332.7	3360	335.9	4320	329.7	5280	329.4
540	184.9	1480	307.5	2440	333.0	3380	335.9	4340	329.7	5300	329.4
560	189.3	1500	308.7	2460	333.3	3400	335.6	4360	329.7	5320	329.4
580	193.7	1520	310.0	2480	333.3	3420	335.6	4380	329.7	5340	329.4
600	198.2	1540	310.6	2500	333.9	3440	335.0	4400	329.7	5360	329.4
620	201.6	1560	311.5	2520	334.2	3460	334.7	4420	329.4	5380	329.4
640	206.0	1580	312.7	2540	334.7	3480	334.7	4440	329.4	5400	329.4
660	210.1	1600	313.4	2560	335.0	3500	334.4	4460	329.4	5420	329.4
680	214.4	1620	314.3	2580	335.3	3520	334.4	4480	329.4	5440	329.7
700	217.5	1640	315.2	2590	335.6	3540	334.4	4500	329.4	5460	329.7
720	221.3	1660	315.8	2600	335.9	3560	334.2	4520	329.4	5480	329.7
740	224.7	1680	316.4	2620	335.9	3580	333.9	4540	329.1	5500	329.7
760	227.5	1700	317.1	2640	335.9	3600	333.9	4560	329.1	5520	329.7
780	230.6	1720	318.0	2660	336.2	3620	333.6	4580	329.1	5540	329.7
800	233.7	1740	318.6	2680	336.2	3640	333.6	4600	329.1	5560	330.0
820	236.6	1760	319.5	2700	336.5	3660	333.3	4620	329.1	5580	330.0
840	239.0	1780	320.1	2720	336.5	3680	333.3	4640	329.1	5600	330.0
860	240.9	1800	321.1	2740	336.5	3700	333.3	4660	329.1	5620	330.0
880	242.8	1820	321.4	2760	336.5	3720	333.3	4680	329.1	5640	330.0
900	244.3	1840	322.3	2780	336.5	3740	333.0	4700	329.1	5660	330.0
920	247.5	1860	322.6	2800	336.5	3760	332.7	4720	329.1	5680	330.0
940	250.3	1880	323.2	2820	336.5	3780	332.7	4740	329.1	5700	330.0
960	253.4	1900	323.8	2840	336.5	3800	332.7	4760	329.1	5720	330.0
980	255.9	1920	324.2	2860	336.5	3820	332.4	4780	329.1	5740	330.0
1000	258.0	1940	324.5	2880	336.5	3840	332.1	4800	329.1	5760	330.0
	262.1	1960	325.1	2900	336.5	3860	332.1	4820	329.1	5780	330.0
1020	263.0	1980	325.7	2920	336.5	3880	332.1	4840	329.1	5800	330.0
800	341.7	1980	325.7	5900	336.5	3880	332.1	4840	329.1	5800	330.0
800	341.7	1980	325.7	5900	336.5	3880	332.1	4840	329.1	5800	330.0
800	341.7	1980	325.7	5900	336.5	3880	332.1	4840	329.1	5800	330.0
800	341.7	1980	325.7	5900	336.5	3880	332.1	4840	329.1	5800	330.0

AGNEW AND SWEET