

Schlumberger COMPENSATED FORMATION DENSITY LOG

COMPANY: CHEVRON OIL CO.
 WELL: C. B. SASSOU #1
 FIELD: HEBER
 COUNTY: IMPERIAL STATE CALIFORNIA
 LOCATION: REMARKS
 DATE: 12/14/68
 TIME: 10:00 AM
 LOGGING UNIT: 11
 LOGGING NO.: 370
 LOGGING DATE: 12/14/68

CHANGES IN MUD TYPE OR ADDITIONAL SAMPLES & SCALE CHANGES

Depth (ft)	Scale (in)	Scale (in)
0	11	11
10	11	11
20	11	11
30	11	11
40	11	11
50	11	11
60	11	11
70	11	11
80	11	11
90	11	11
100	11	11
110	11	11
120	11	11
130	11	11
140	11	11
150	11	11
160	11	11
170	11	11
180	11	11
190	11	11
200	11	11
210	11	11
220	11	11
230	11	11
240	11	11
250	11	11
260	11	11
270	11	11
280	11	11
290	11	11
300	11	11
310	11	11
320	11	11
330	11	11
340	11	11
350	11	11
360	11	11
370	11	11

LOGGING DATA

Depth (ft)	Scale (in)	Scale (in)
0	11	11
10	11	11
20	11	11
30	11	11
40	11	11
50	11	11
60	11	11
70	11	11
80	11	11
90	11	11
100	11	11
110	11	11
120	11	11
130	11	11
140	11	11
150	11	11
160	11	11
170	11	11
180	11	11
190	11	11
200	11	11
210	11	11
220	11	11
230	11	11
240	11	11
250	11	11
260	11	11
270	11	11
280	11	11
290	11	11
300	11	11
310	11	11
320	11	11
330	11	11
340	11	11
350	11	11
360	11	11
370	11	11

REMARKS

370-375

BIT SIZE CASING DATA

Bit Size (in)	Casing (in)	From (ft)	To (ft)
11	TD	1335	Surf

CALIBRATION DATA

Run No.	API Scale	Gamma Ray Background CPS	Total CPS	RIC - Before Log - ACPS	RIC - After Log - ACPS
1	11	150	440	440	440
2	11	150	564	564	564

All interpretations or opinions based on inferences from electrical or other measurements, and we warrant, and do not guarantee the accuracy or correctness of any measurements, and we shall not be liable or responsible in the case of gross or willful negligence on our part, but liable or responsible for any loss, cost, damage or expense incurred or sustained by anyone resulting from any interpretation made by any of our officers, agents or employees. These interpretations are also subject to Clause 7 of our General Terms and Conditions as set out in our current Price Schedule.

CALIPER

HOLE DIA. IN INCHES

7 12 17

GAMMA RAY

API UNITS

50 150

CORRECTION

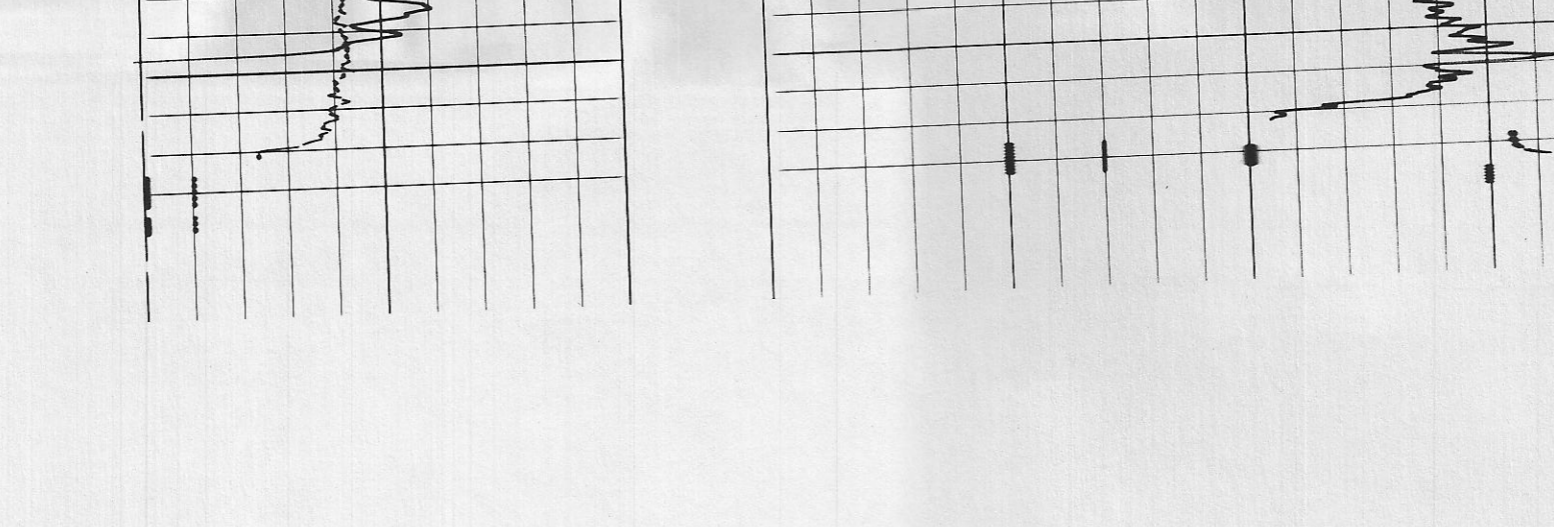
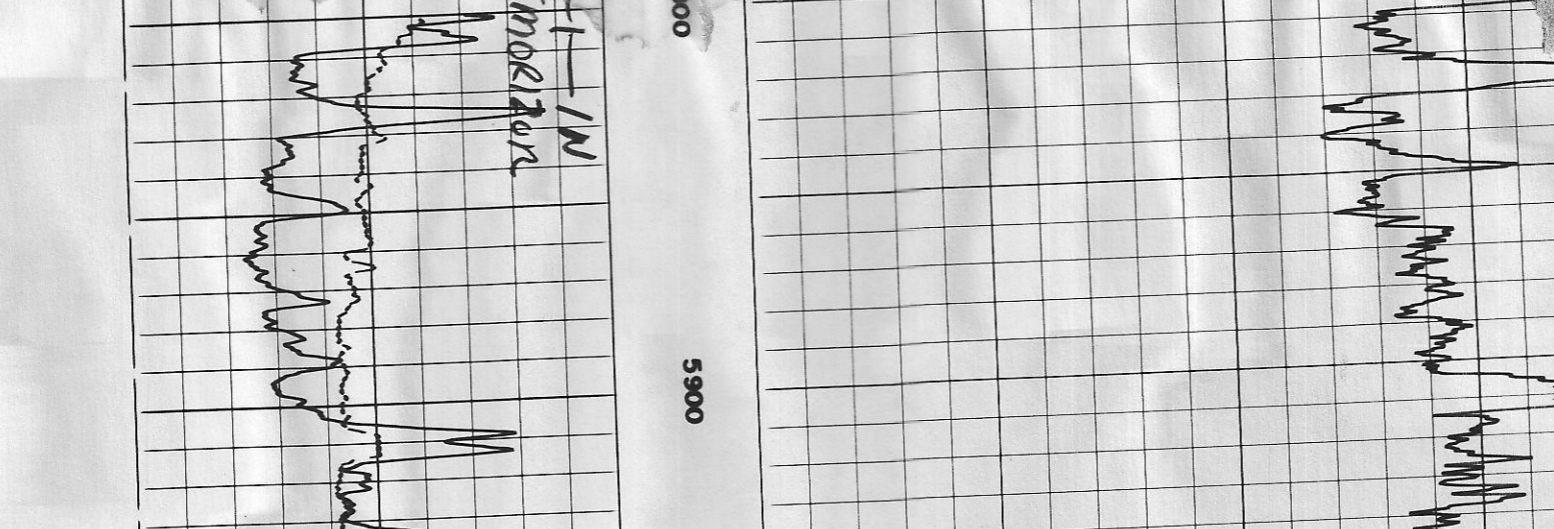
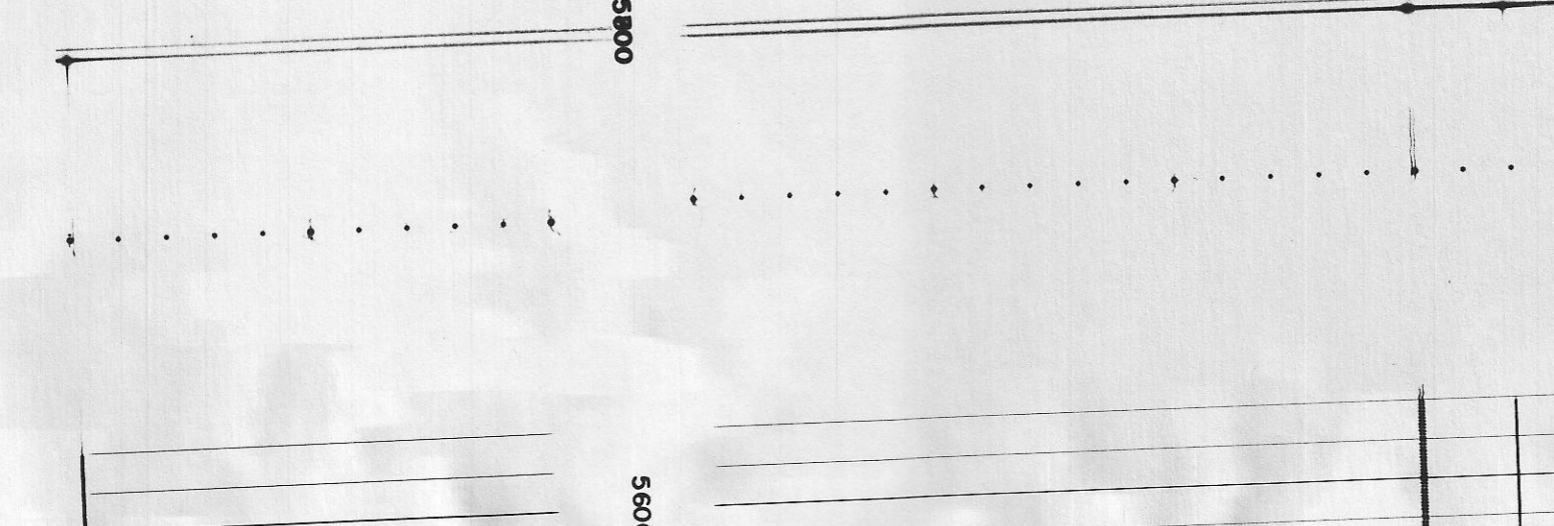
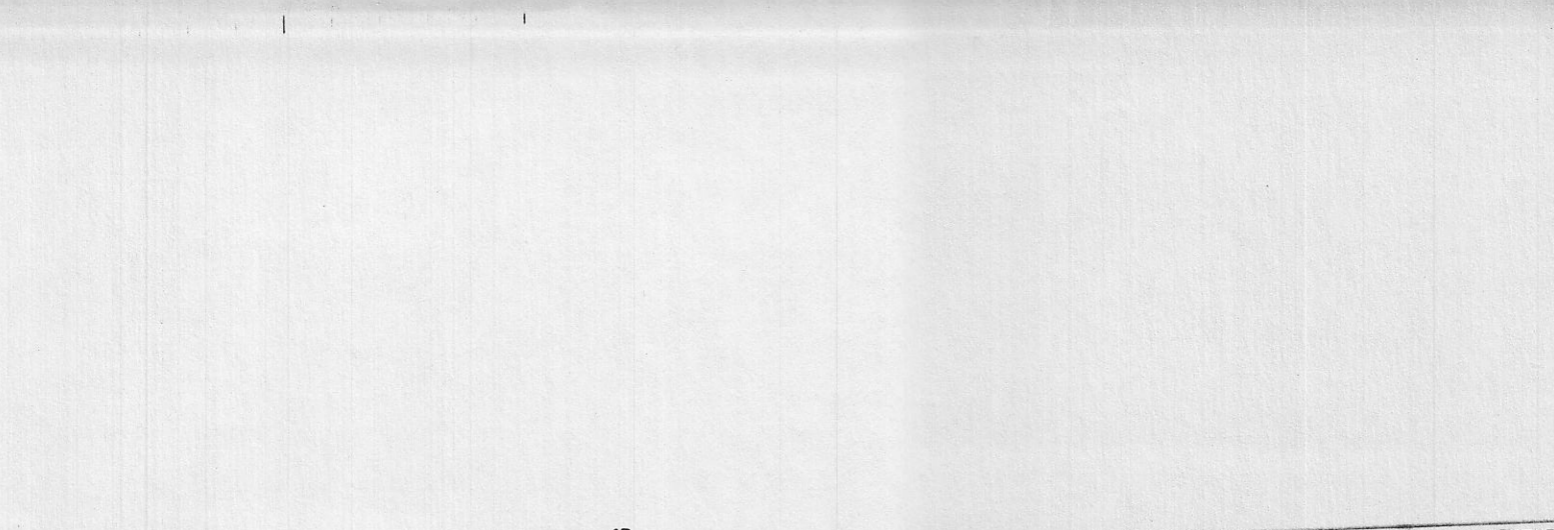
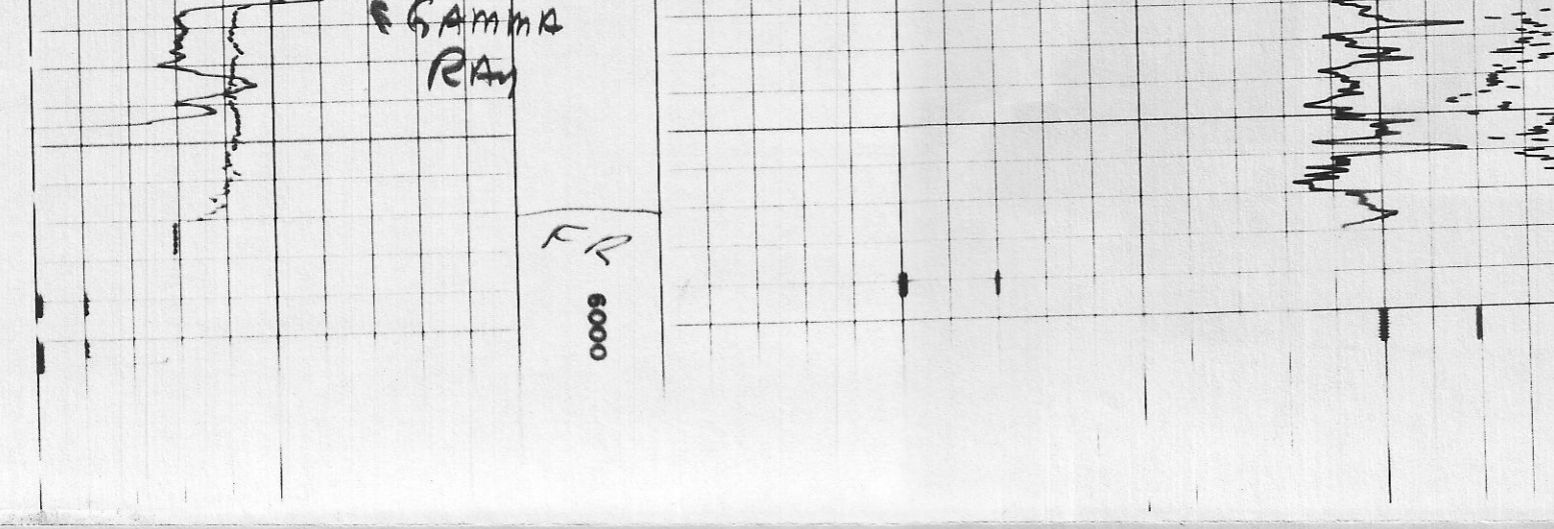
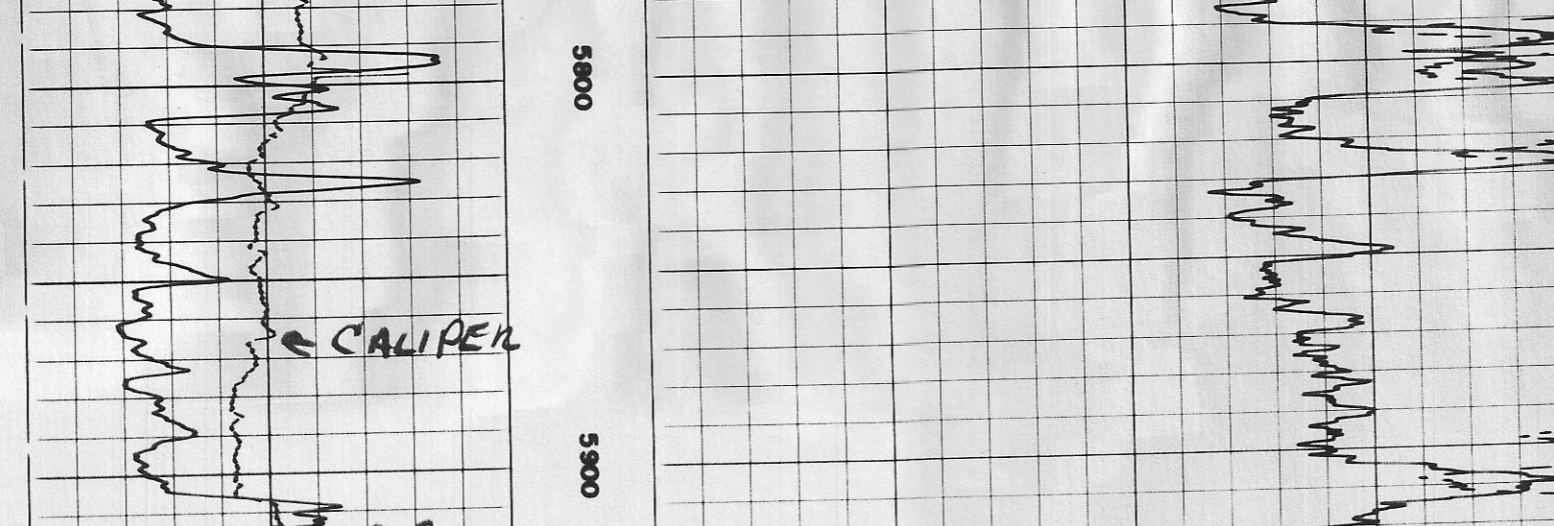
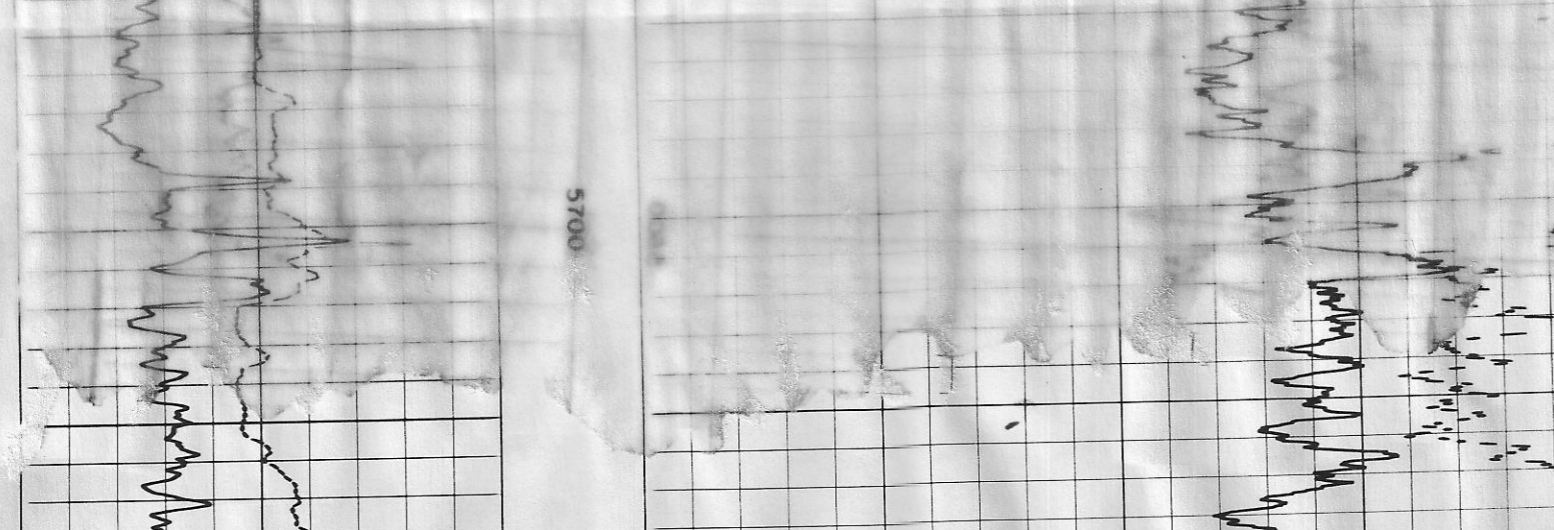
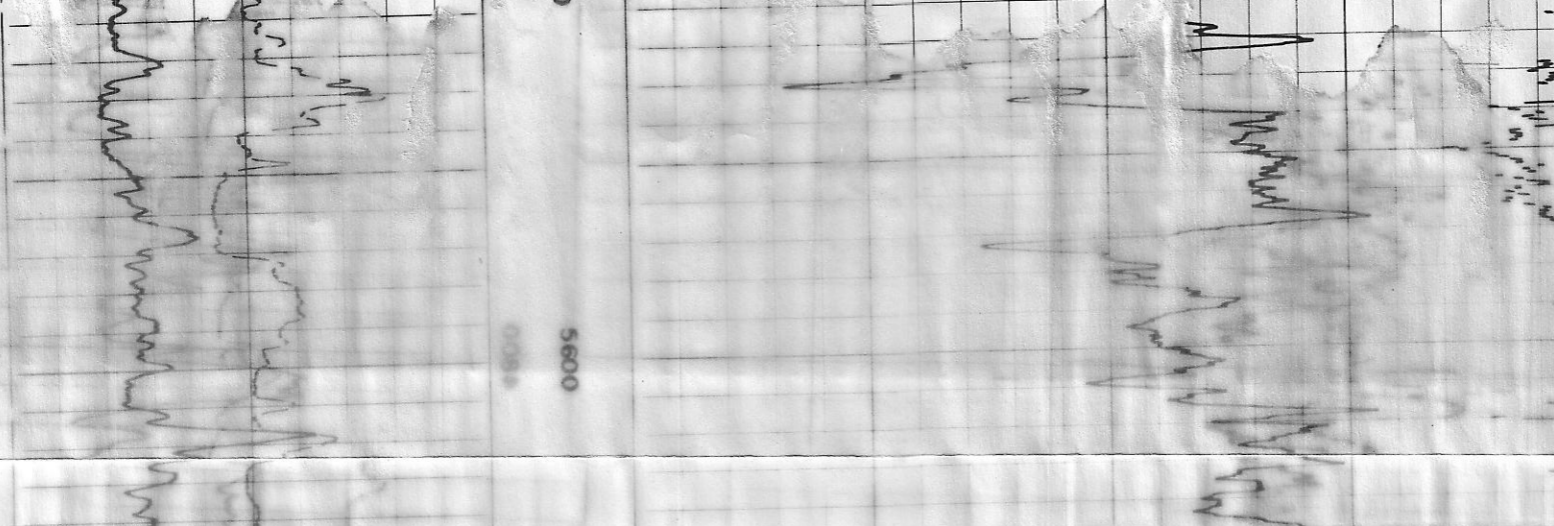
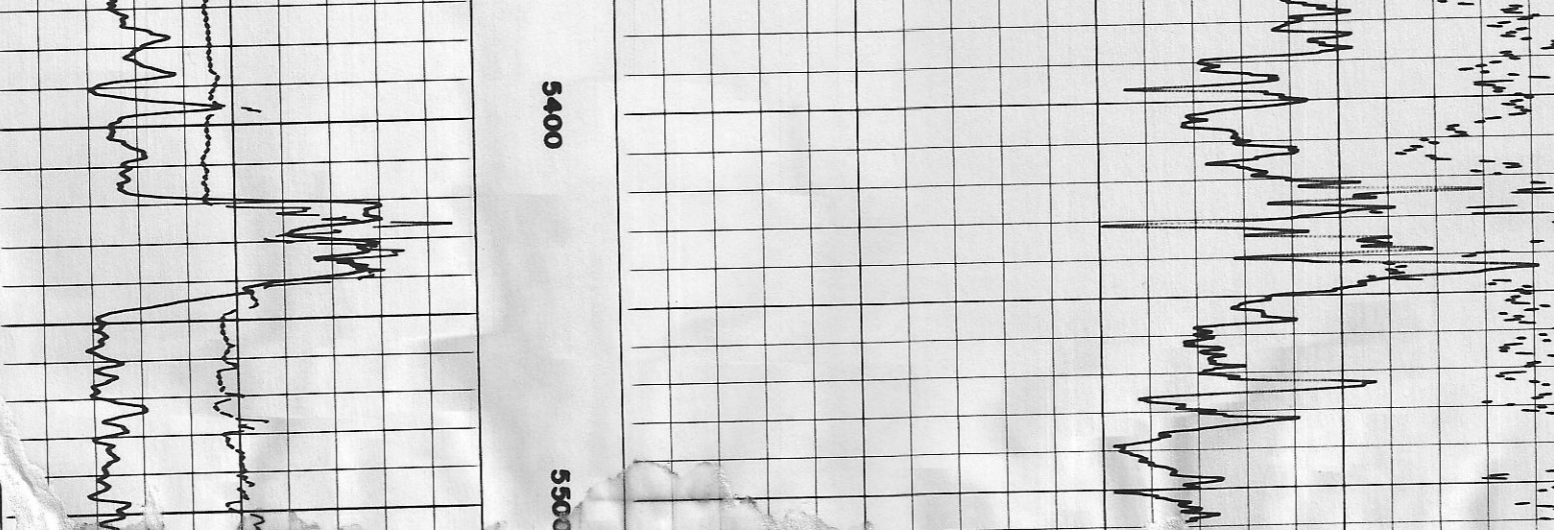
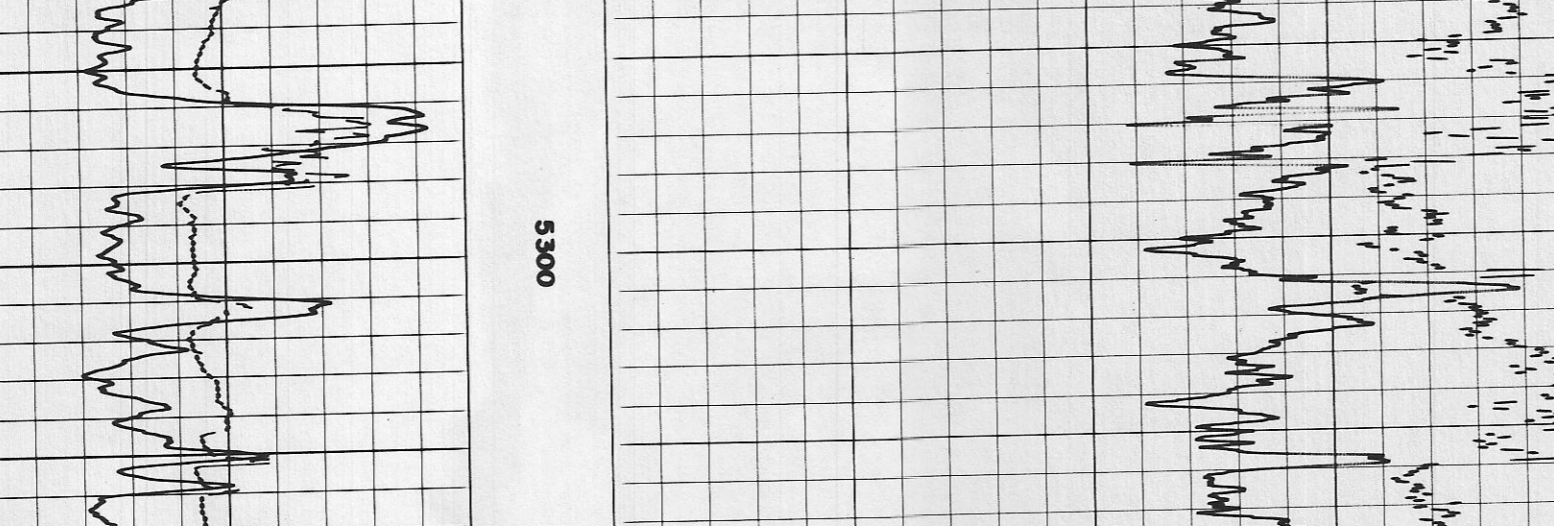
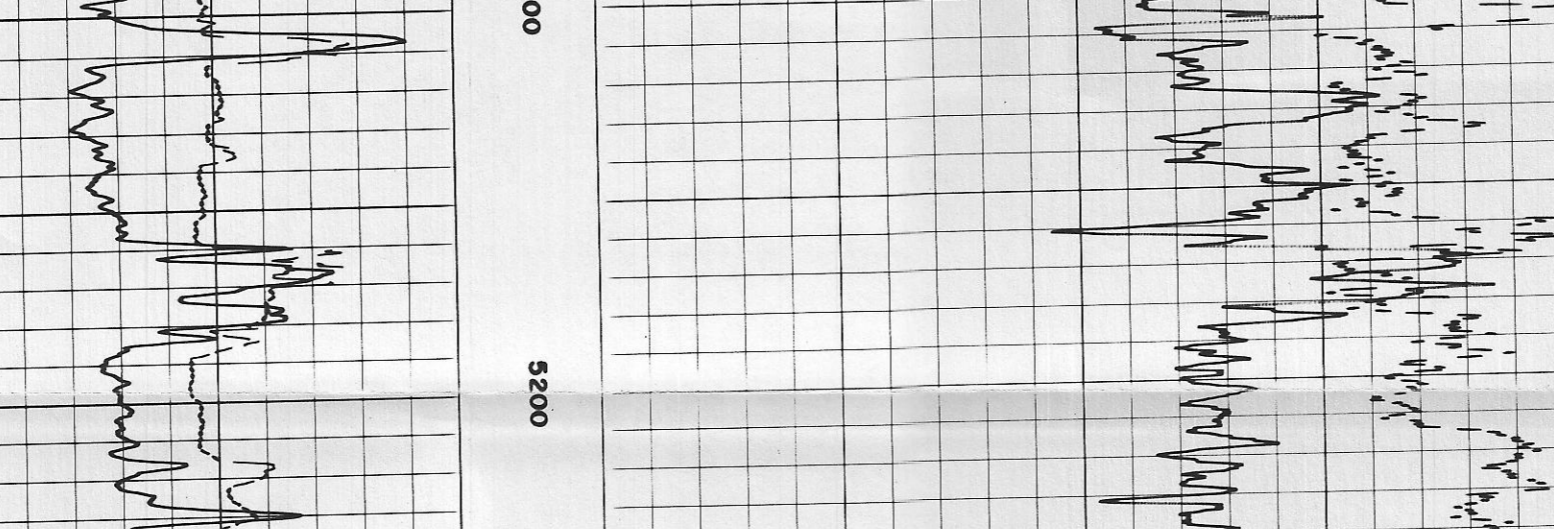
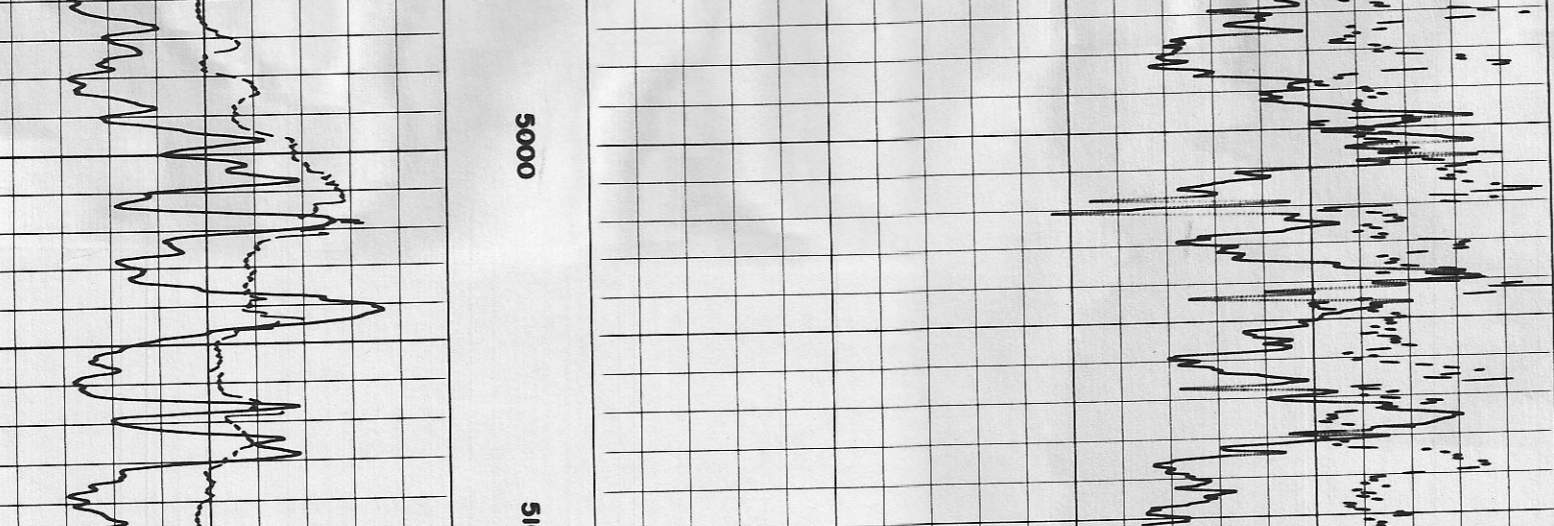
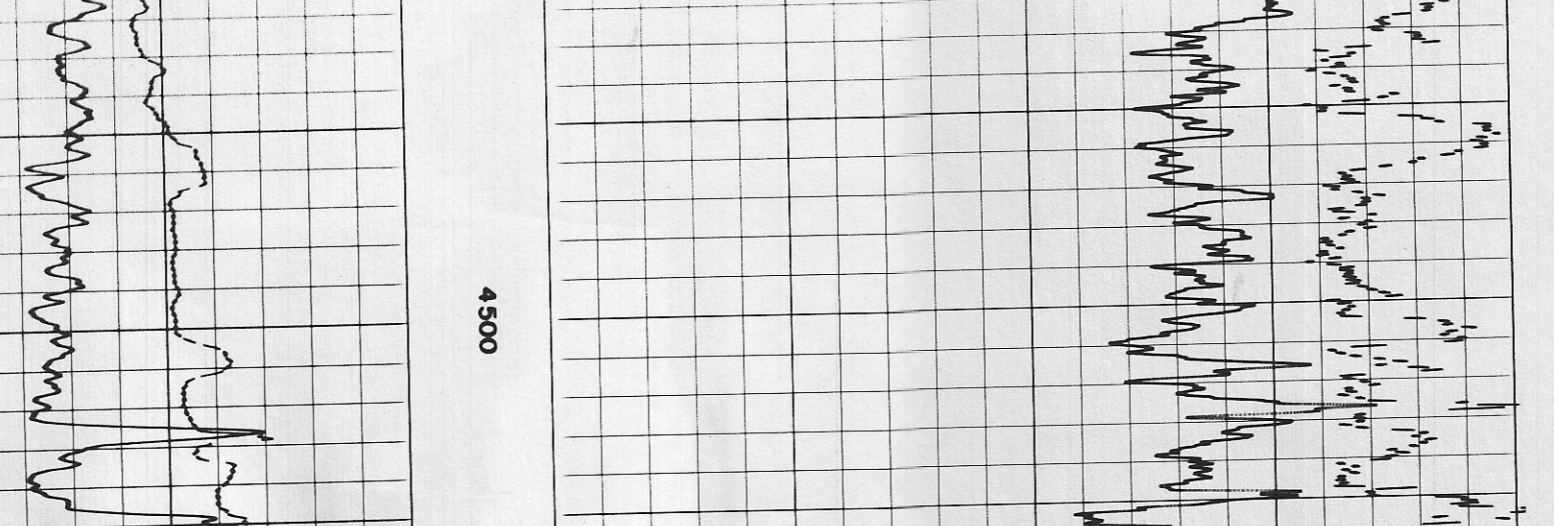
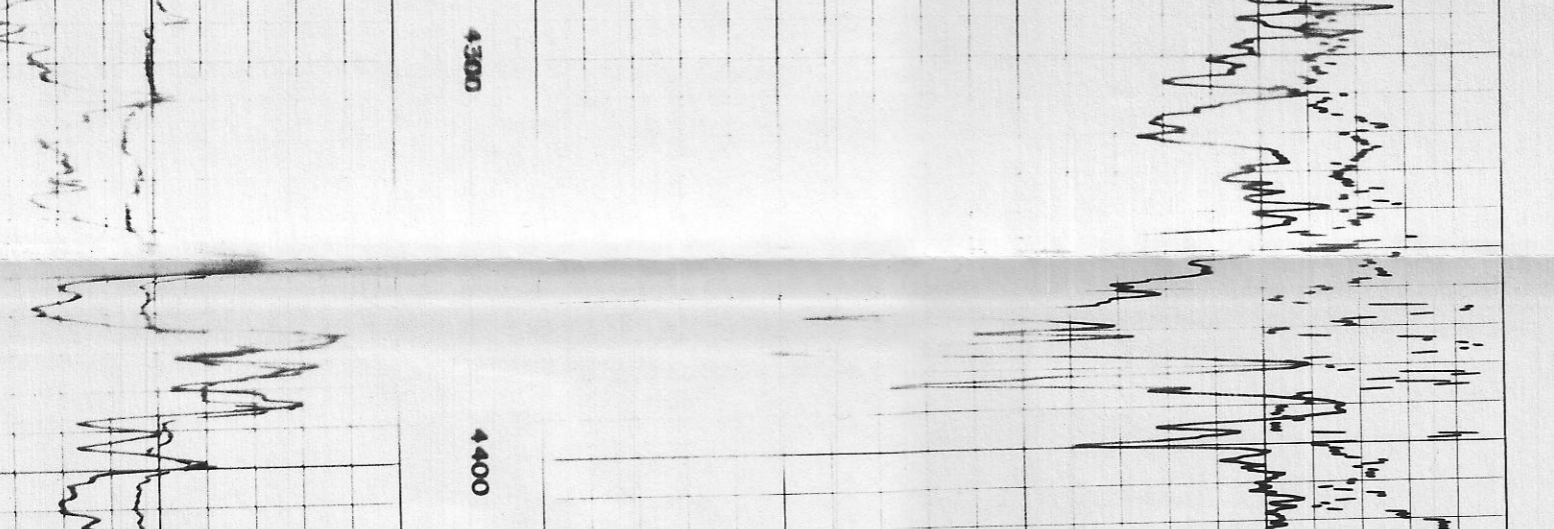
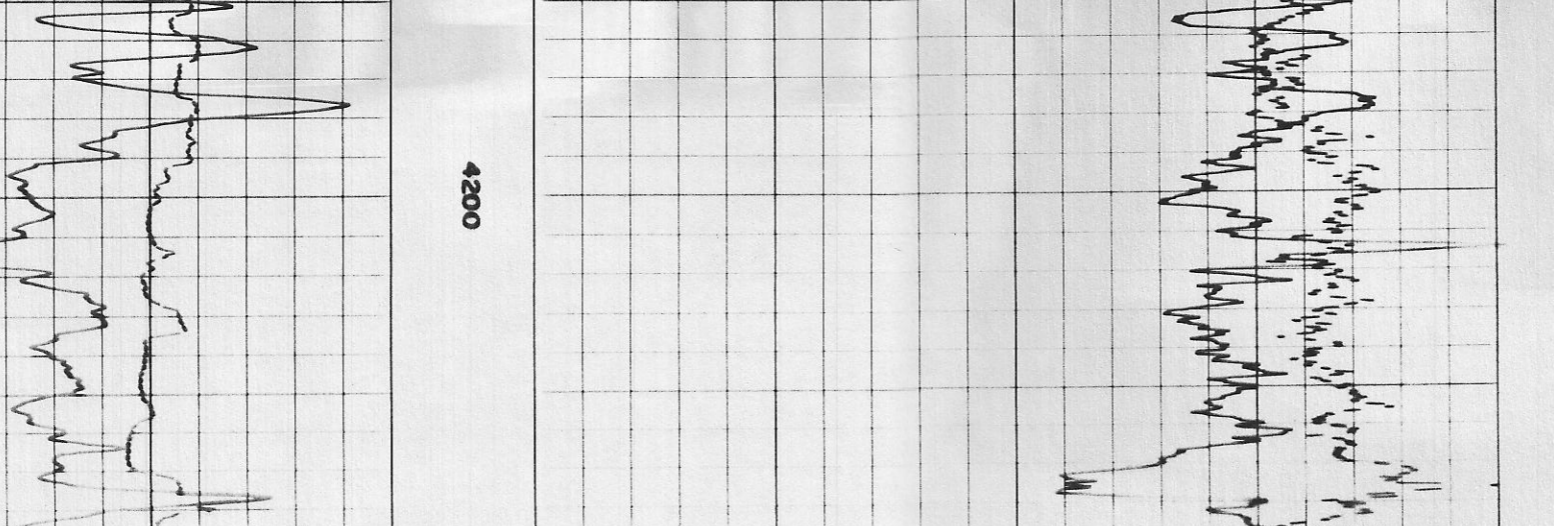
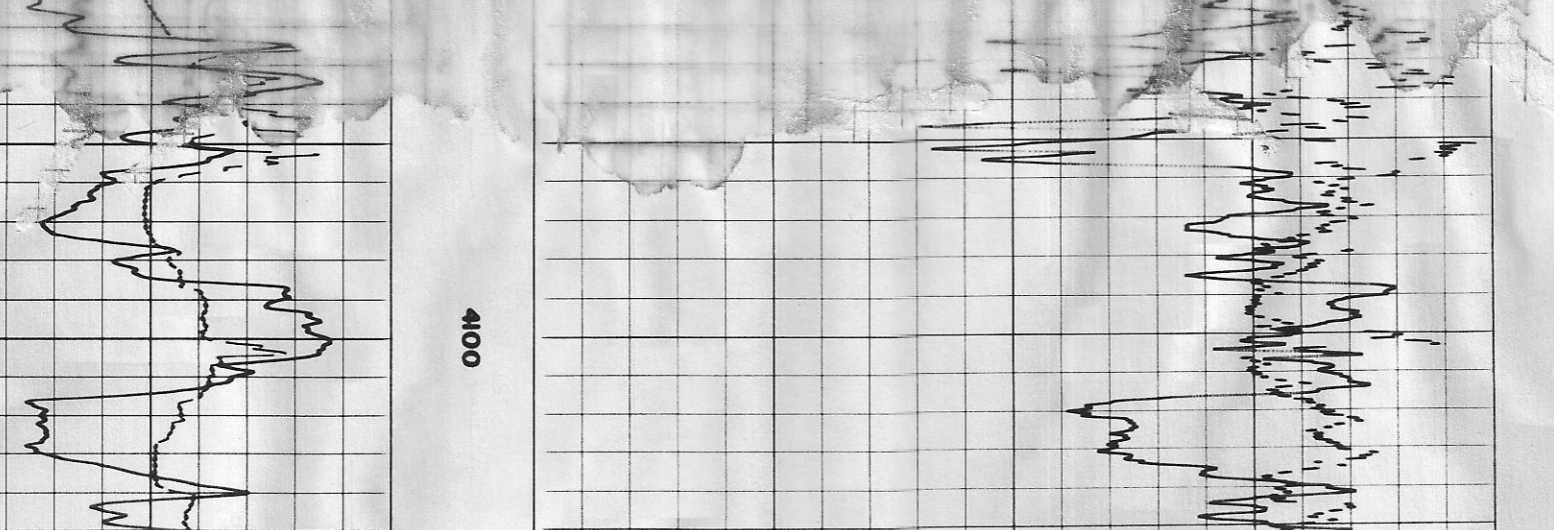
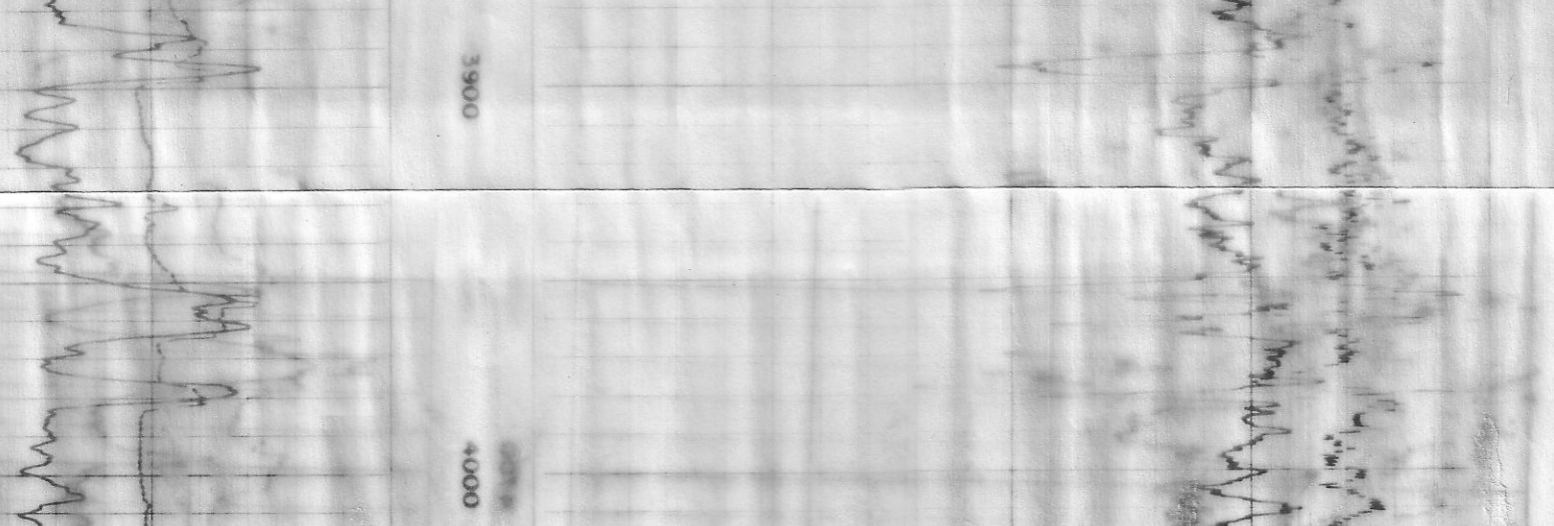
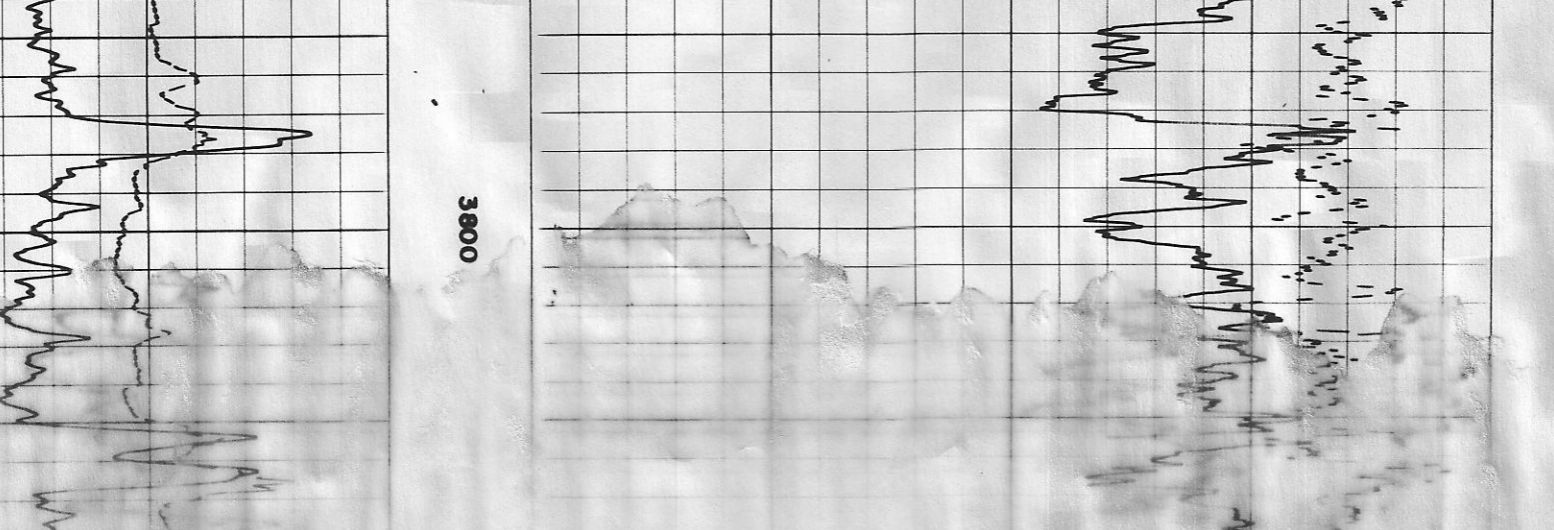
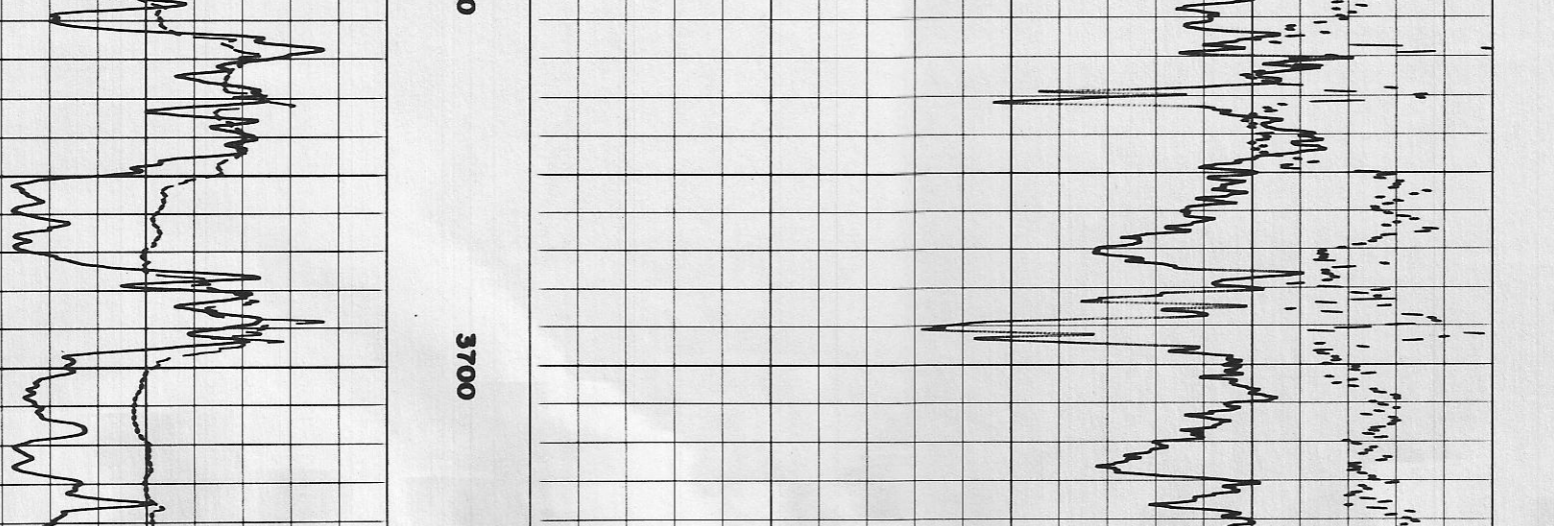
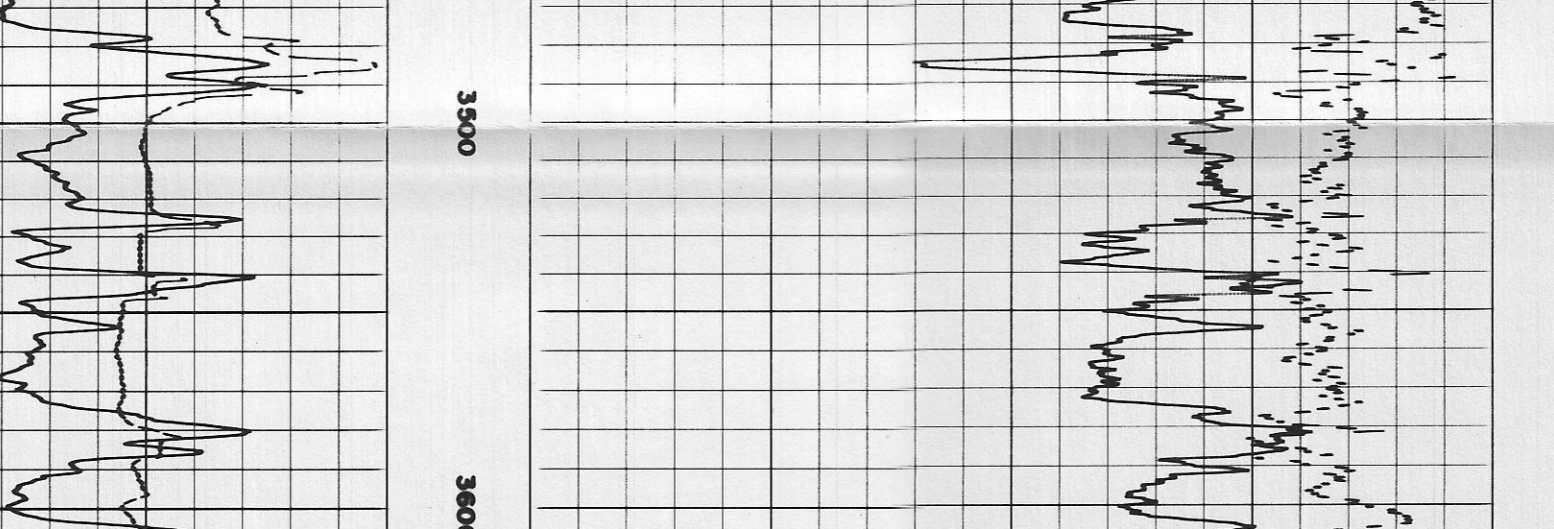
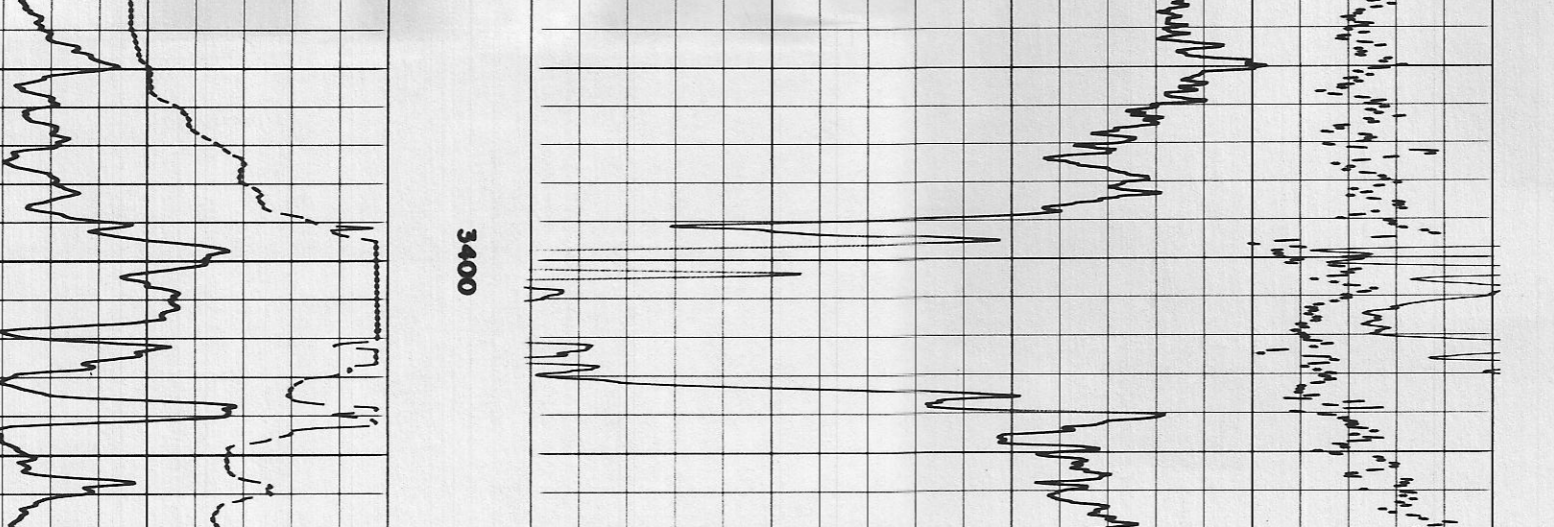
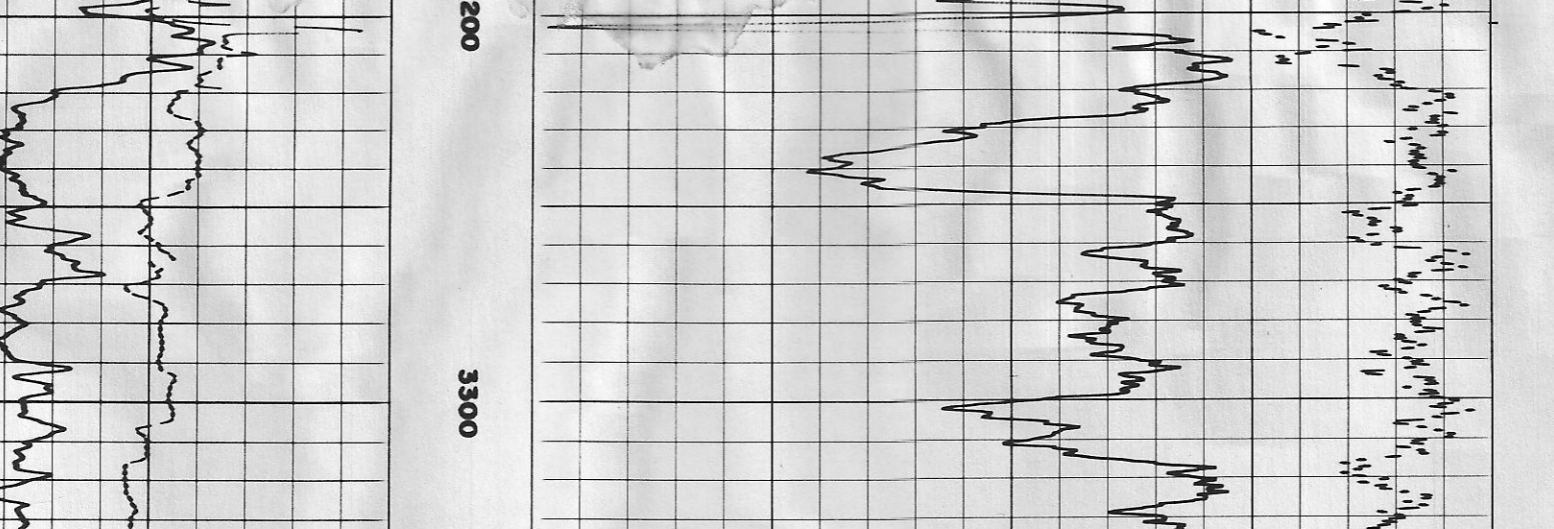
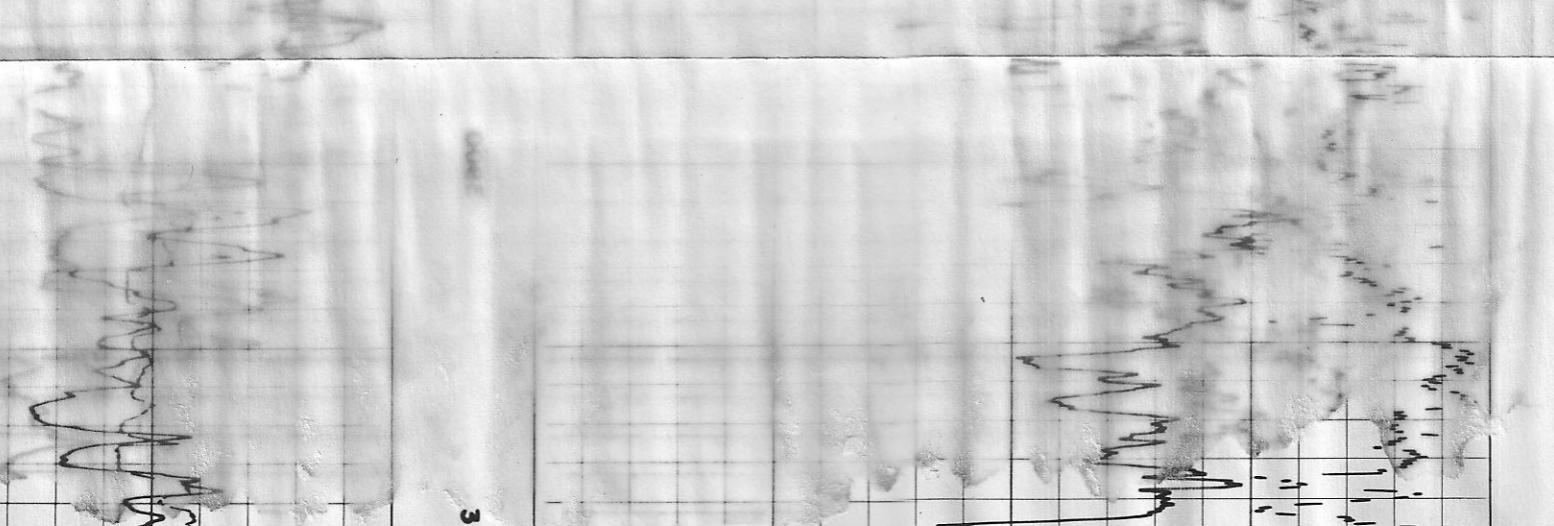
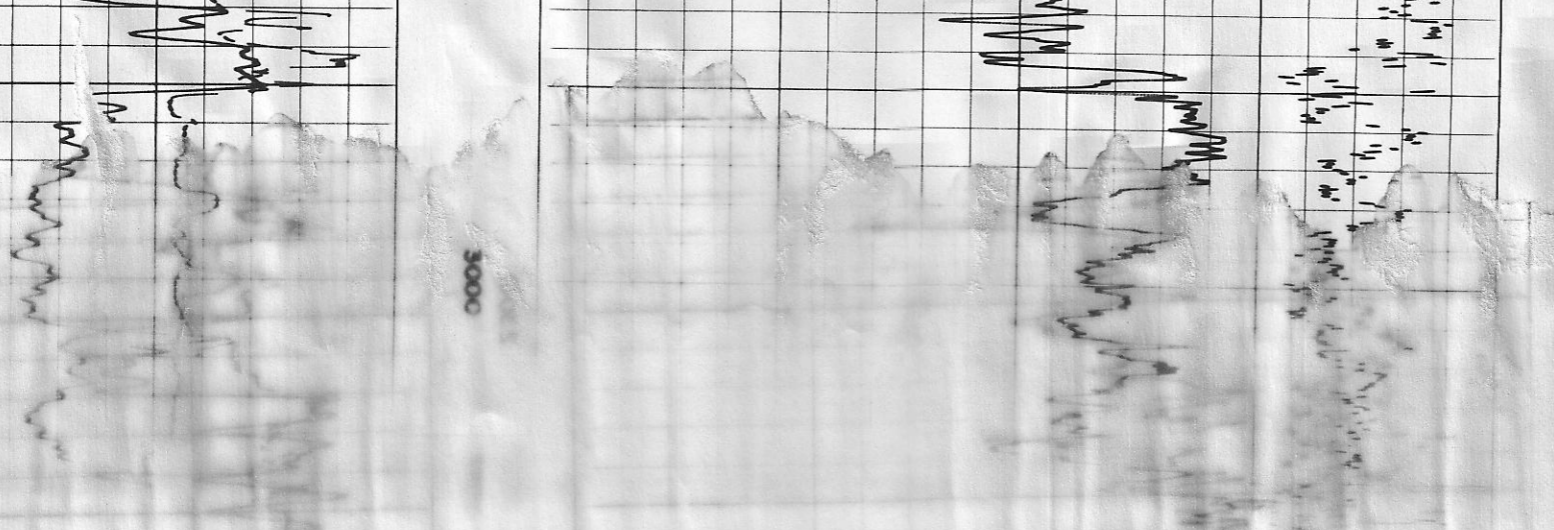
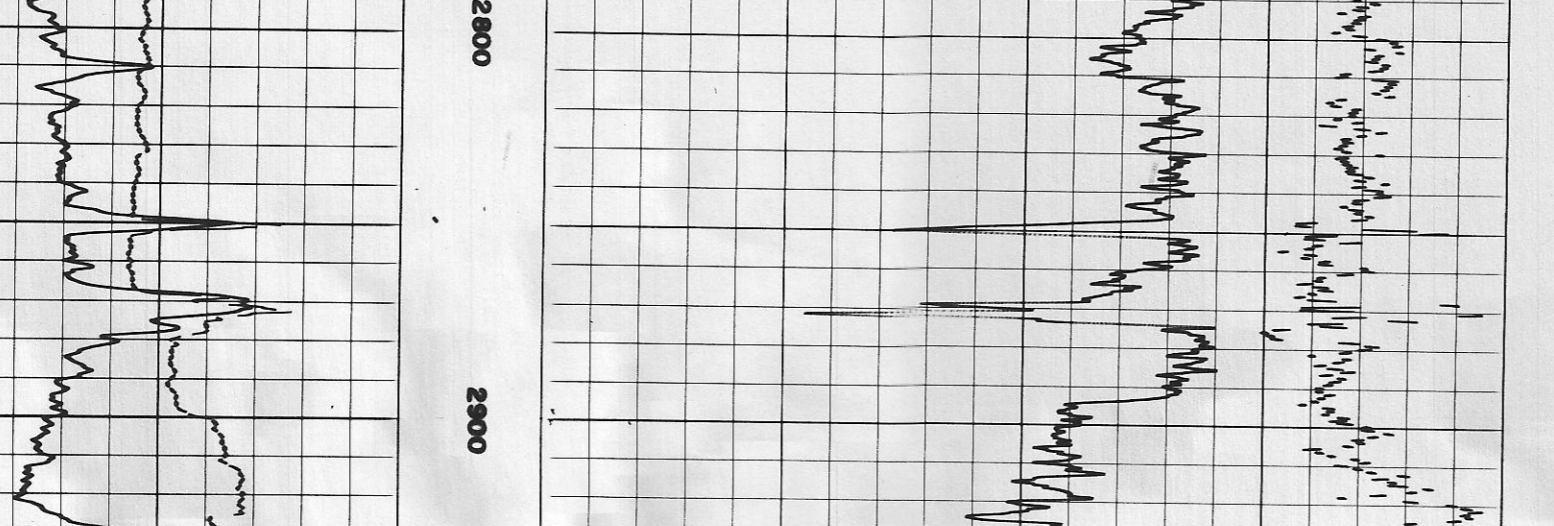
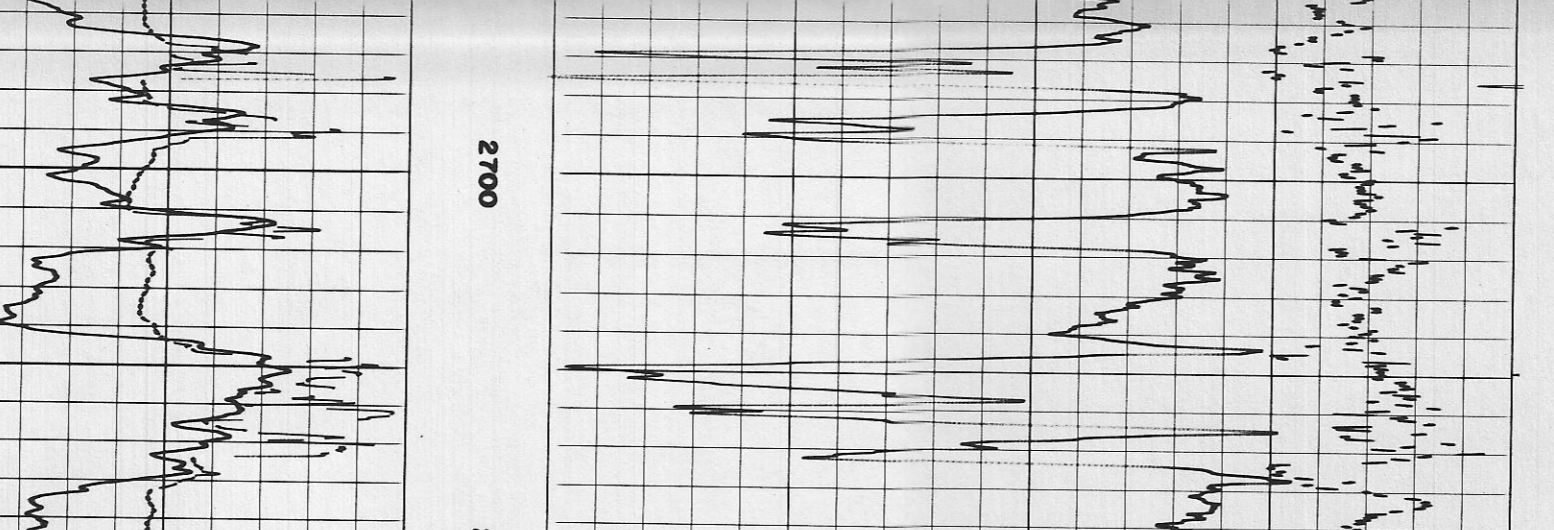
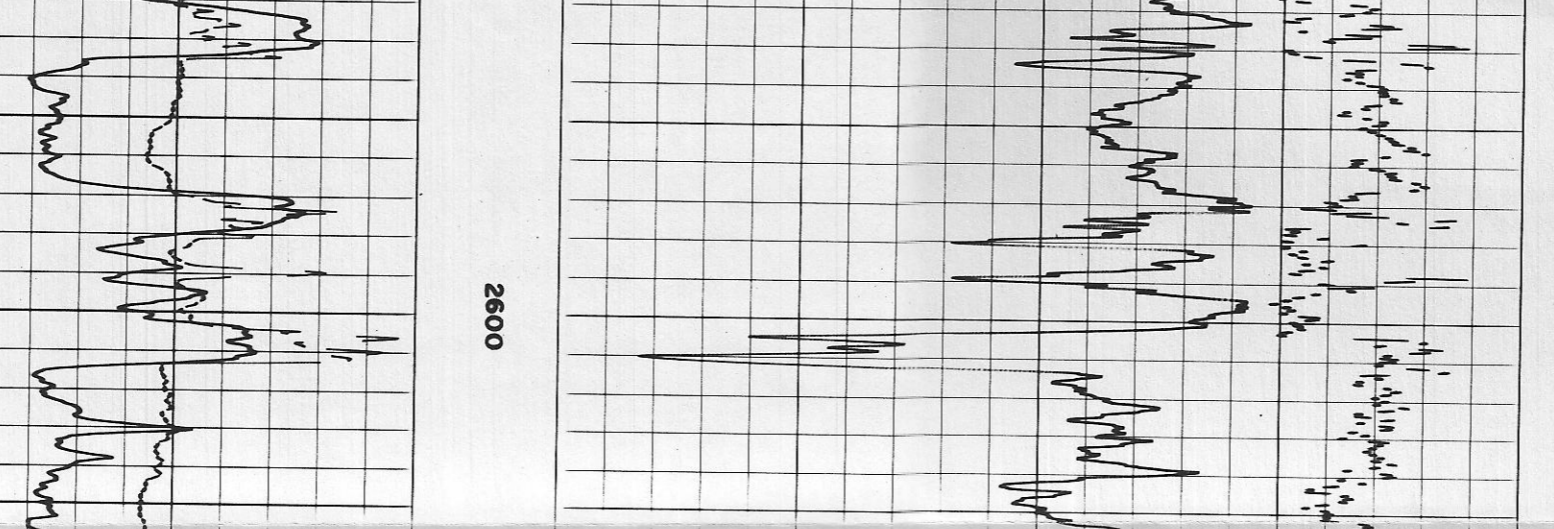
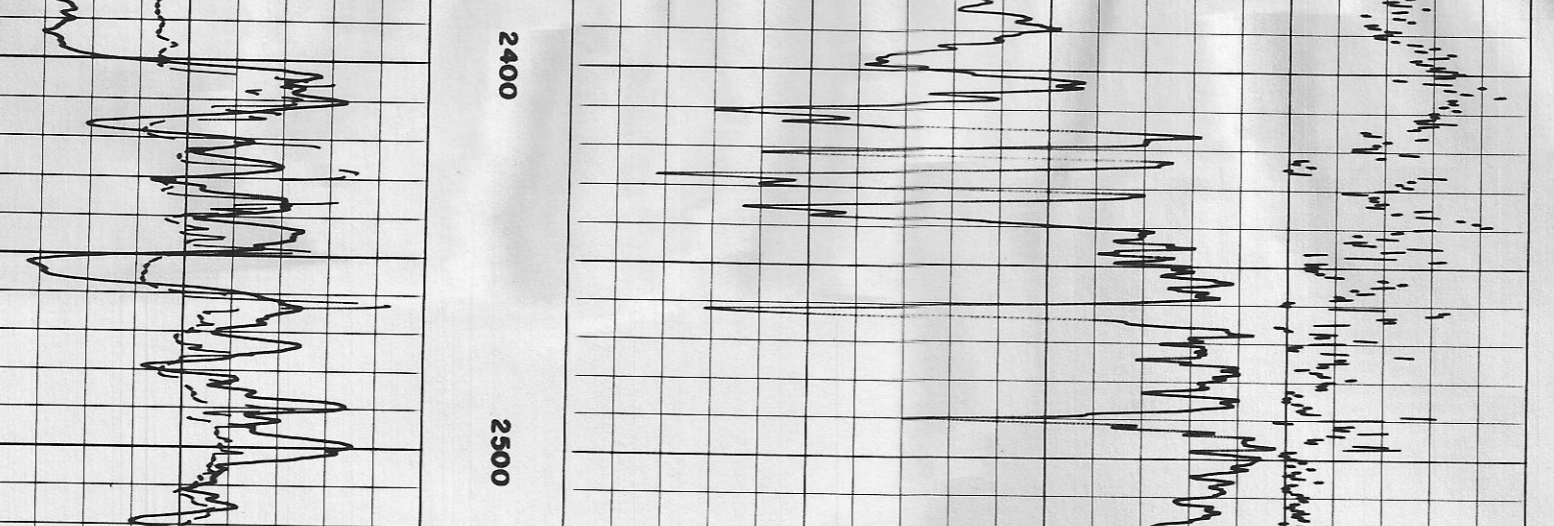
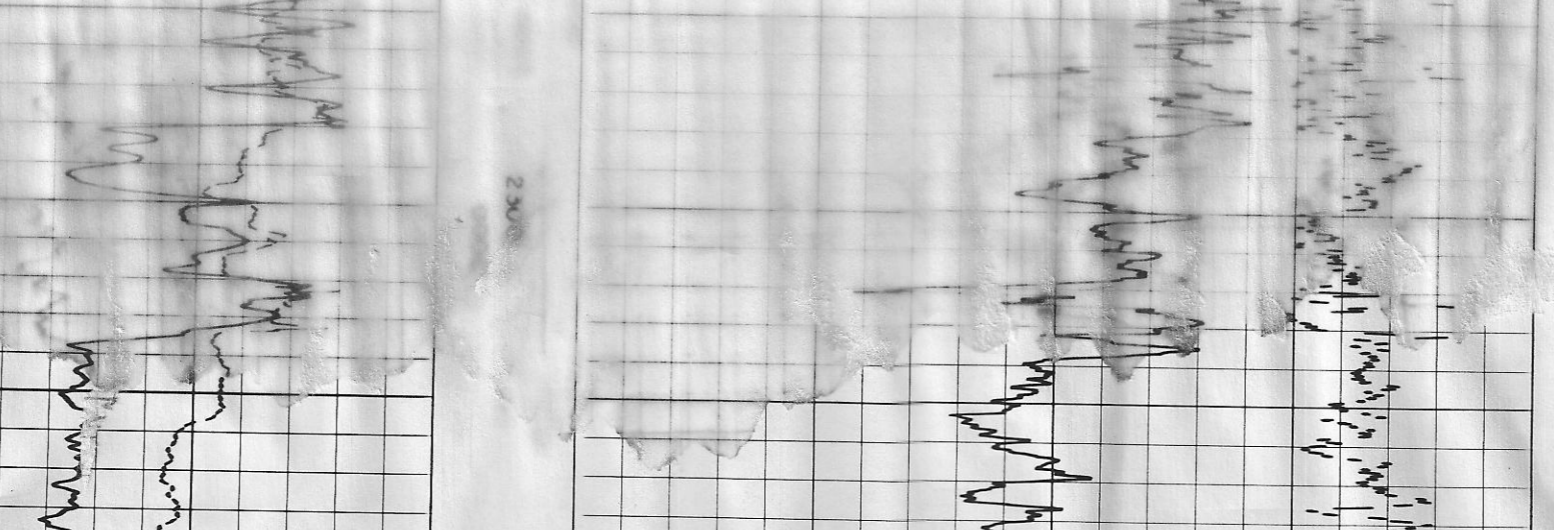
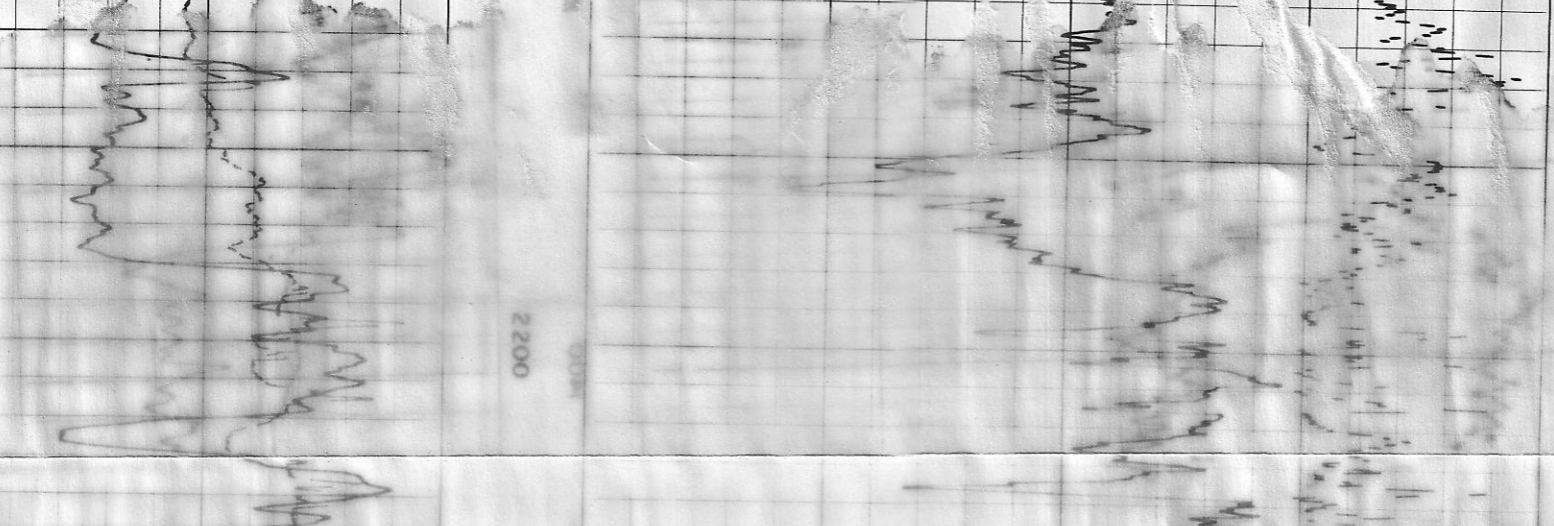
GRAMS/CC

1.65 2.15 2.65

BULK DENSITY

GRAMS/CC

1.15 1.65



REPEAT