

**Schlumberger** INDUCTION ELECTRICAL LOG

GLD-41312-3

COMPANY **CHEVRON Oil Co**  
 WELL **C. B. JACKSON No 1**  
 FIELD **HEBER**  
 COUNTY **IMPERIAL** STATE **CALIF.**

LOG Measured from **GL** Elev. **- 9**  
 Drilling Measured from **K. B.** Elev. **K B 5**  
 Date **8-14-74** Elev. **GL - 9**

Permanent Datum: **GL** Elev. **- 9**  
 Log Measured from **K. B.** Elev. **K B 5**  
 Drilling Measured from **K. B.** Elev. **GL - 9**

LOG Measured from **GL** Elev. **- 9**  
 Drilling Measured from **K. B.** Elev. **K B 5**  
 Date **8-14-74** Elev. **GL - 9**

LOG Measured from **GL** Elev. **- 9**  
 Drilling Measured from **K. B.** Elev. **K B 5**  
 Date **8-14-74** Elev. **GL - 9**

REMARKS

Changes in Mud Type or Additional Samples  
 Date Sample No.  
 Depth—Driller  
 Type Fluid in Hole

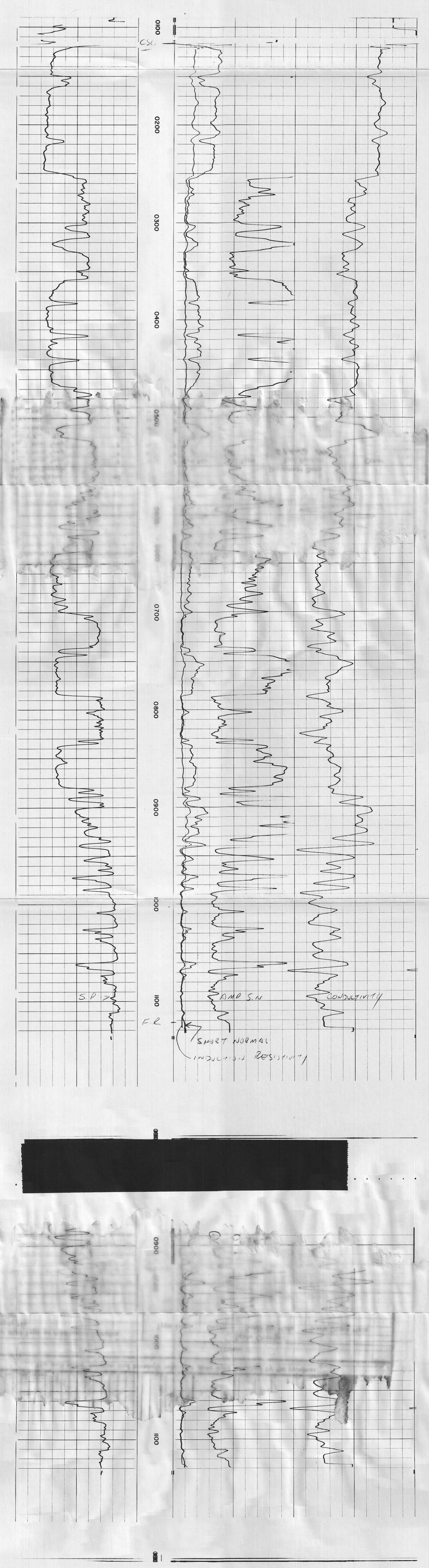
Scale Changes  
 Scale Up Hole  
 Scale Down Hole

Equipment Data  
 Tool Position  
 Other

Service Order # **5705**  
 OIL BOTTOMS E **1330**  
 CIRCUIT NUMBER **1245**

Check one, filling in blanks where applicable:  
 Surface determined sonde errors used for 6FF40.  
 6FF40 sonde error corrected for borehole signal at Rim  
 6FF40 zero set in hole at depth of \_\_\_\_\_ feet.

SPONTANEOUS-POTENTIAL MILLIVOLTS	RESISTIVITY OHMS M <sup>2</sup> M	CONDUCTIVITY MILLIMHOS M <small>1000 OHMS M<sup>2</sup> M</small>
$\frac{10}{-} +$	A - 16" - M SHORT NORMAL 10	6FF40 INDUCTION 0
	INDUCTION 10	4000 2000
	INDUCTION 10	
	AMP. SHORT NORMAL 2	



1100