

POROSITY PERMEABILITY
DISPLAY PLOT

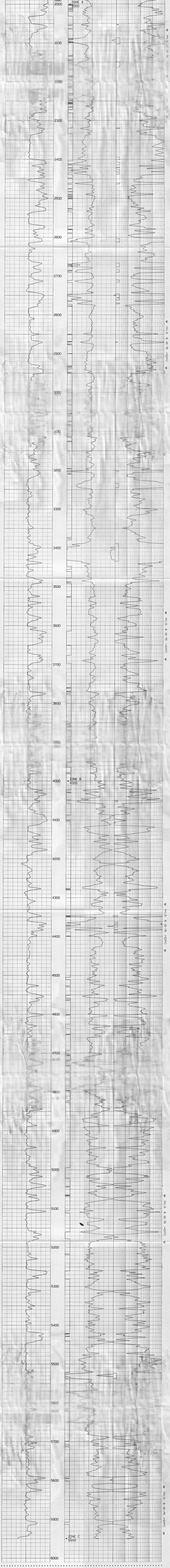
WELL C.B. JACKSON NO. 1
 FIELD HEBER
 COUNTY IMPERIAL
 STATE CALIFORNIA
 COUNTRY U.S.A.

WELL IDENTIFICATION
 COMPANY CHEVRON OIL COMPANY
 WELL C.B. JACKSON NO. 1
 FIELD HEBER
 COUNTY IMPERIAL
 STATE CALIFORNIA
 COUNTRY U.S.A.

API NO KB
 DATUM 16 FT
 ELEVTN 532 1165 R14E

PROJECT RECORD		INPUT DATA	
COMPANY CHEVRON OIL CO	CONTACT	CURVES	
PROJECT HEBER			
DATA PROCESSING RECORD		DCTNL	
PROJECT HC0217		DIPS	
WELL HC6271		MARKERS	
DATE JUNE 1971		CORE	
ANALYST JHM		PARAMS	
REMARKS			

GAMMA RAY D POROSITY PERMEABILITY
 150 E 50 % 0.1 10000
 (API UNITS) P PNP MD
 T
 H
 MARKERS



GAMMA RAY D POROSITY PERMEABILITY
 150 E 50 % 0.1 10000
 (API UNITS) P PNP MD
 T
 H
 MARKERS

INPUT PARAMETERS
 SHALLOW POROSITY-POR X .8065 .0487
 DEEP POROSITY-POR X 1.6747 .1132
 SHALLOW PERM-SPOR X 21.8933 .3.7962 (LOGK)
 DEEP PERM-DPOR X 13.6099 .0.9135 (LOGK)