

Schlumberger  
DUAL INDUCTION LATERLOG  
WITH LINEAR CORRELATION LOG

COMPANY **C. B. JACKSON OIL CO.**  
WELL **C. B. JACKSON #1**  
FIELD **HEBER**  
COUNTY **IMPERIAL STATE CALIFORNIA**

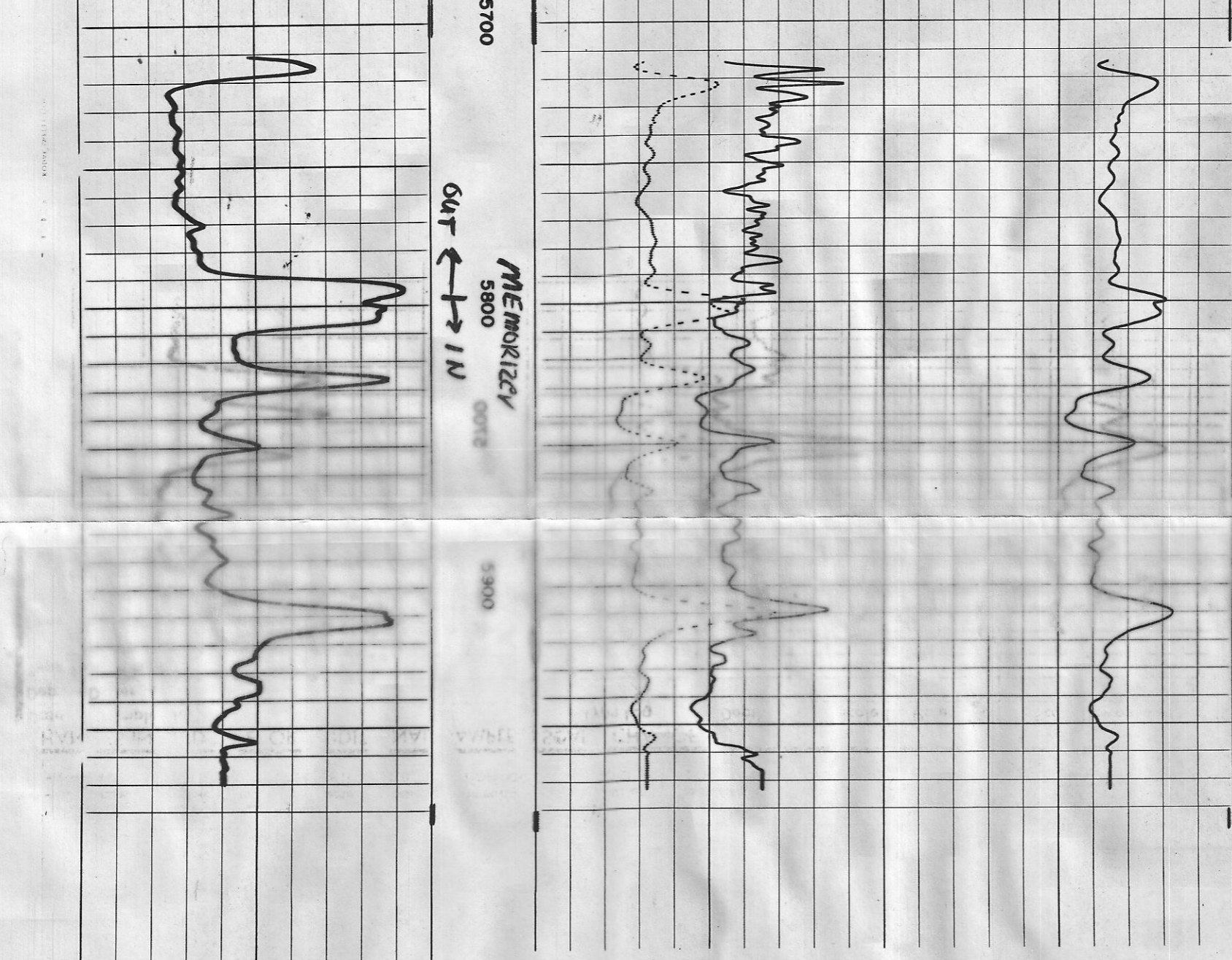
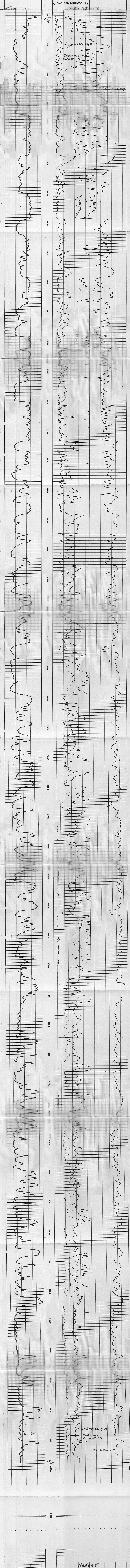
LOCATION **1101 S. Main Highway, Los Angeles, California**  
DATE **1/15/54**  
LOG NO. **101**  
WELL NO. **101**  
WELL DEPTH **165**  
LOG DEPTH **165**  
LOG TYPE **LOG**

DATE	1/15/54
WELL NO.	101
WELL DEPTH	165
LOG NO.	101
LOG DEPTH	165
LOG TYPE	LOG
LOGGING COMPANY	C. B. JACKSON OIL CO.
LOGGING ENGINEER	
LOGGING OPERATOR	
LOGGING ASSISTANT	
LOGGING SUPERVISOR	
LOGGING MANAGER	
LOGGING DIRECTOR	
LOGGING PRESIDENT	
LOGGING VICE PRESIDENT	
LOGGING SECRETARY	
LOGGING CLERK	
LOGGING LABORER	
LOGGING OPERATOR	
LOGGING ASSISTANT	
LOGGING SUPERVISOR	
LOGGING MANAGER	
LOGGING DIRECTOR	
LOGGING PRESIDENT	
LOGGING VICE PRESIDENT	
LOGGING SECRETARY	
LOGGING CLERK	
LOGGING LABORER	

Scale Changes: Type Log, Depth, Scale Up Hole, Scale Down Hole

REMARKS: Surface determined sands errors used for OFF40. OFF40 scale error corrected for. OFF40 zero set in hole at depth of.

SPONTANEOUS-POTENTIAL	MILLIVOLTS	CONDUCTIVITY	MILLIMHOES/M
		DEEP INDUCTION LOG	
		RESISTIVITY	
		DEEP INDUCTION LOG	
		AVERAGED LATERLOG - 8	
		AMP. AVE. LATERLOG - 8.2	



SPONTANEOUS-POTENTIAL MILLIVOLTS

CONDUCTIVITY MILLIMHOES/M

DEEP INDUCTION LOG

RESISTIVITY OHM-FT

All interpretations are opinions based on inferences from electrical or other measurements and we cannot, and do not, guarantee the accuracy or correctness of any interpretations, and we shall not be liable or responsible for any loss, costs, damages or expenses incurred or sustained by anyone resulting from any interpretation made by any of our officers, agents or employees. These interpretations are also subject to Clause 7 of our General Terms and Conditions as set out in our current Price Schedule.