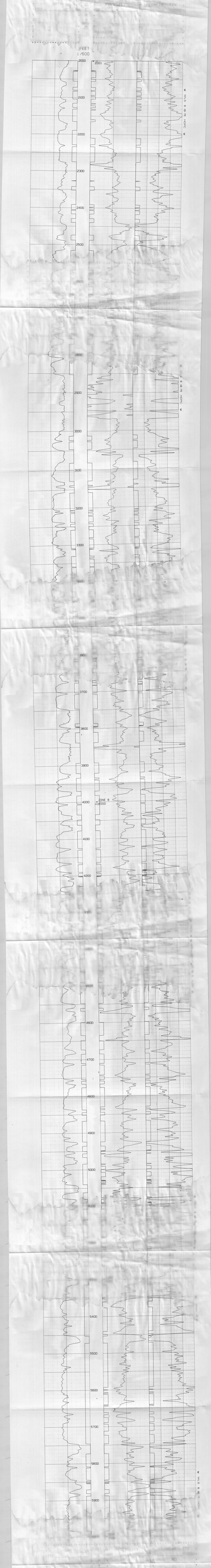
 <b>Chevron Oil Company</b> Geophysical Division Houston Data Processing Center Computer Processed Log Display	<b>POROSITY PERMEABILITY</b> <b>DISPLAY PLOT</b>		COMPANY CHEVRON OIL COMPANY FIELD HEBER COUNTY IMPERIAL STATE CALIFORNIA COUNTRY U.S.A.
	WELL IDENTIFICATION COMPANY CHEVRON OIL COMPANY WELL J.D. JACKSON NO.1 FIELD HEBER COUNTY IMPERIAL STATE CALIFORNIA COUNTRY U.S.A.	API. NO. DATUM KB ELEVATN 16 FT LOCATN S33 T16S R14E	
PROJECT RECORD COMPANY CHEVRON OIL CO PROJECT HEBER CONTACT DATA PROCESSING RECORD PROJECT HC0217 WELL HC0270 DATE JUNE 1975 ANALYST JHM		INPUT DATA CURVES DRCTNL DIPS MARKERS CORE PARAMS	REMARKS



MARKERS

PERMEABILITY - GEN POR X 1.3333

PERMEABILITY - GEN POR X 1.3333

PERMEABILITY - GEN POR X 1.3333