

Schlumberger

INDUCTION ELECTRICAL LOG

COMPANY: CHEVRON OIL COMPANY
 WELL: CHEVRON-NARCO MAGMA J.D. JACKSON NO. 1
 FIELD: HEBER
 COUNTY: IMPERIAL STATE: CALIFORNIA

LOCATION: SEL MEMBERS
 Sec. 33 Twp. 16 S. Rpt. 14 E.
 Elev. 775
 Other Services:

COUNT: 1
 FIELD OF VIEW: HEBER
 LOCATION: CHEVRON-NARCO MAGMA J.D. JACKSON NO. 1
 WEL: CHEVRON-NARCO MAGMA J.D. JACKSON NO. 1
 COMPANY: CHEVRON OIL COMPANY

Form Number: 111-28
 Date: 11/1/66
 Run No.: 101
 Log Measured From: 2000
 Log Measured To: 2077

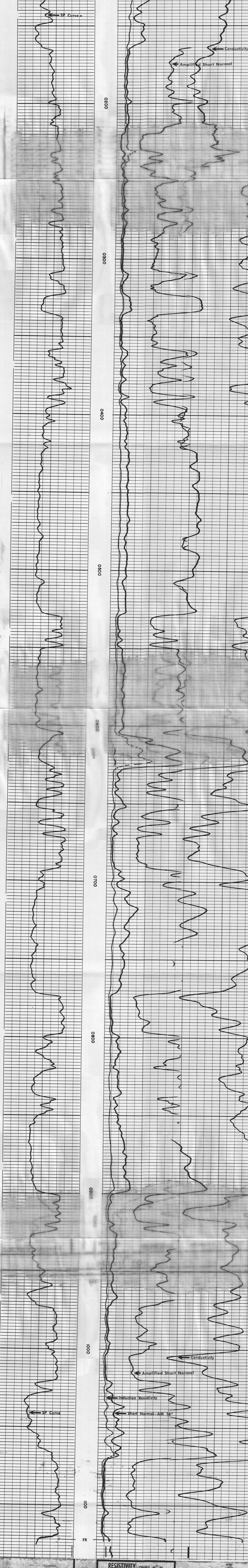
REMARKS: The well name, location and borehole reference data were furnished by the customer.

Changes in Mud Type or Additional Samples: Scale Change: Scale Up/Down Hole, Scale Down Hole.

Other Remarks: Date: 11/1/66; Well: HEBER; Log No. 101; Equipment Used: Induction Log; Log Type: Induction Log.

Equip. PANEL No.: N-1560
 Used: CART No.: S-1404
 SONDE No.: M-1184
 I&P No.: S-5370
 S.B.R.

Check logs, filling in blanks where applicable:
 (X) Surface determined; () Sonde error; () Induction error; () 6 FF40 error; () 6 FF40 error; () Induction error; () 6 FF40 error.

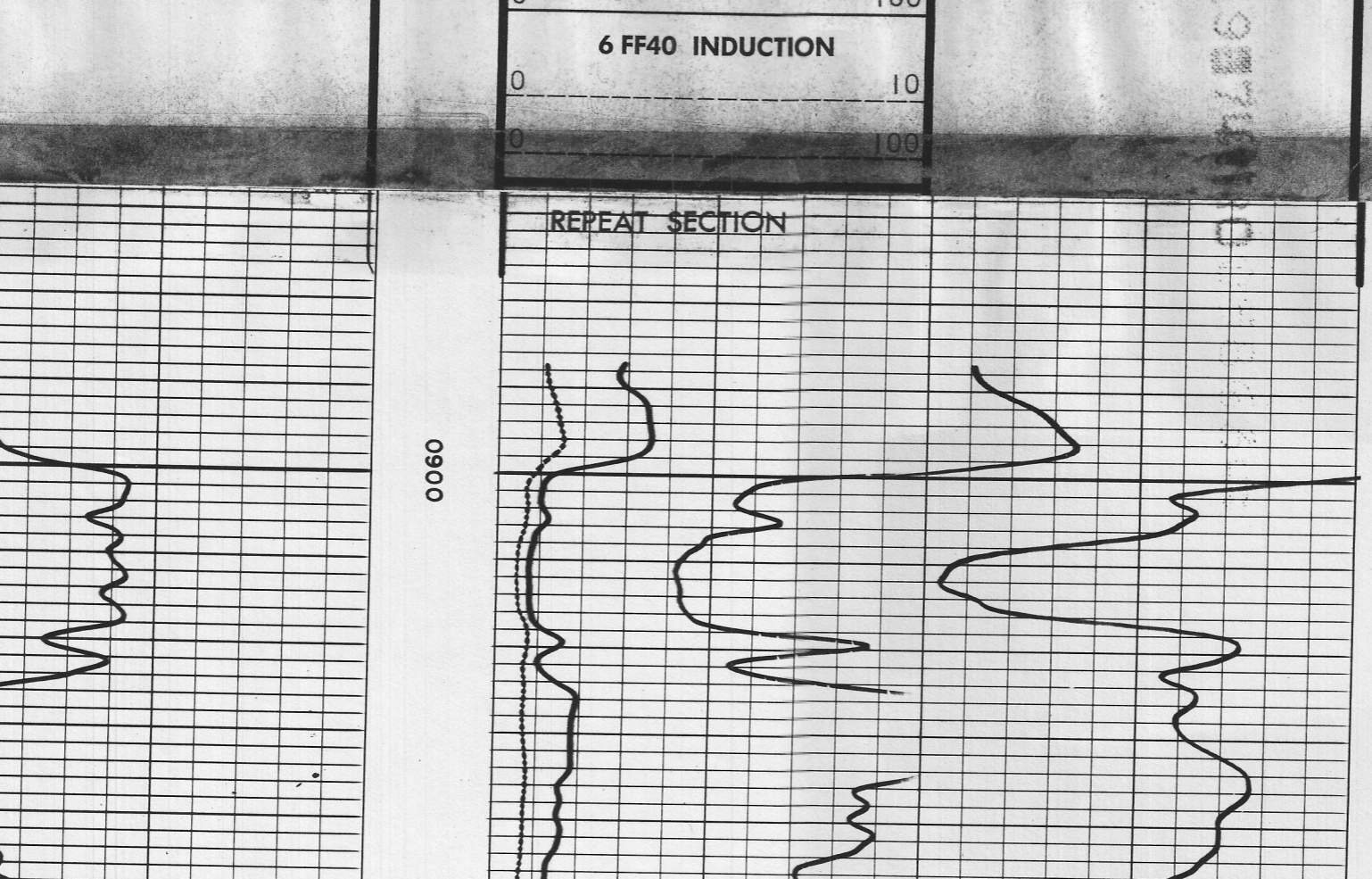


SPONTANEOUS-POTENTIAL	MILLIVOLTS
RESISTIVITY	OHMS, M/FT
A-16" M SHORT NORMAL	
AMP. SHORT NORMAL	
6 FF40 INDUCTION	
CONDUCTIVITY	
MILLIMHOS, M/FT	
6 FF40 INDUCTION	

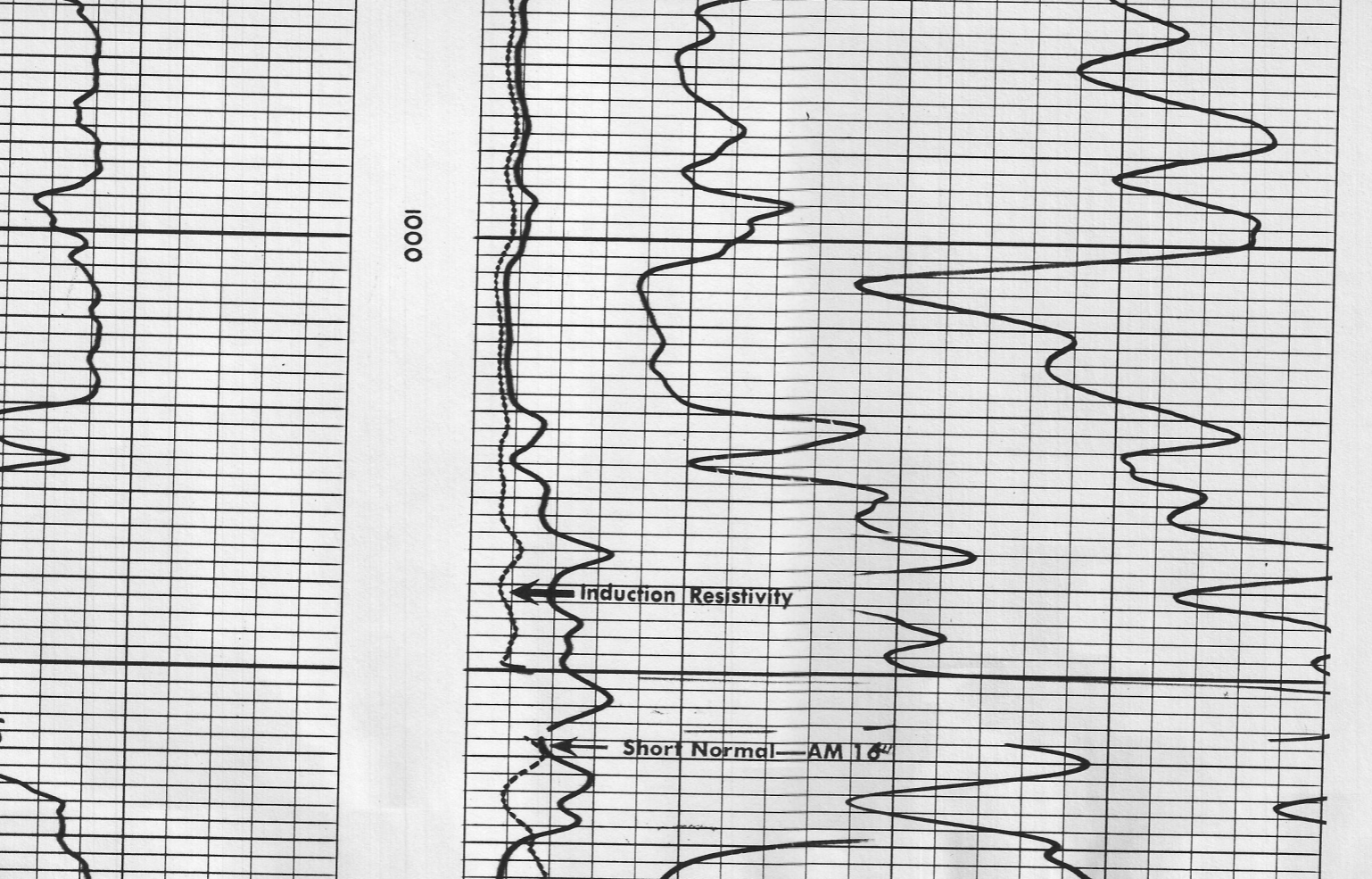
COMPANY: CHEVRON OIL COMPANY
 WELL: CHEVRON-NARCO MAGMA J.D. JACKSON NO. 1
 FIELD: HEBER
 COUNTY: IMPERIAL STATE: CALIFORNIA

SCHL. FR: 1122
 SCHL. TD: 1128
 DRIL. TD: 1130
 Elev.: 775
 KB: 7
 DF: 5
 OL: -9

DETAIL LOG



REPEAT SECTION



SPONTANEOUS-POTENTIAL	MILLIVOLTS
RESISTIVITY	OHMS, M/FT
A-16" M SHORT NORMAL	
AMP. SHORT NORMAL	
6 FF40 INDUCTION	
CONDUCTIVITY	
MILLIMHOS, M/FT	
6 FF40 INDUCTION	

COMPANY: CHEVRON OIL COMPANY
 WELL: CHEVRON-NARCO MAGMA J.D. JACKSON NO. 1
 FIELD: HEBER
 COUNTY: IMPERIAL STATE: CALIFORNIA

SCHL. FR: 1122
 SCHL. TD: 1128
 DRIL. TD: 1130
 Elev.: 775
 KB: 7
 DF: 5
 OL: -9

CALIBRATION RECORD

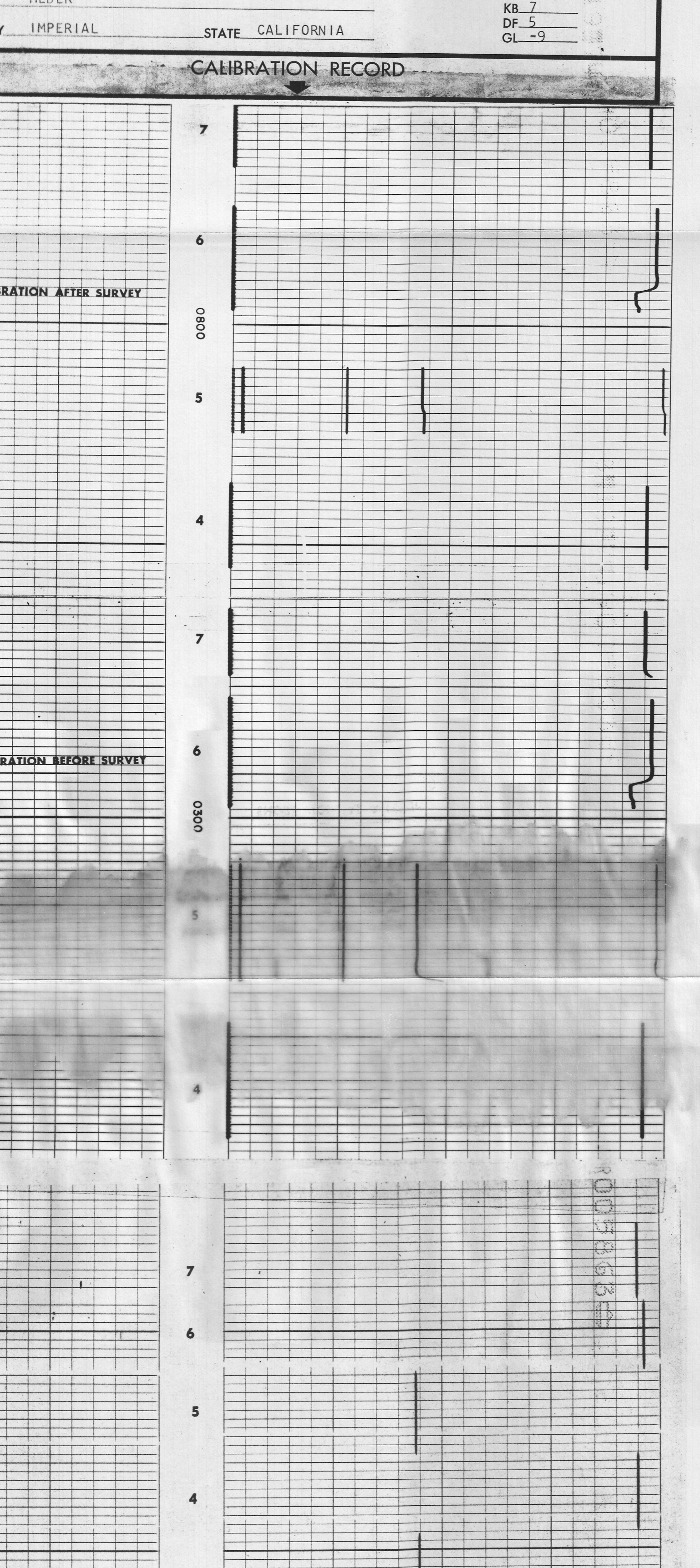
INDUCTION-ELECTRICAL SURVEY CALIBRATION CODING

- 1. MECHANICAL ZERO
- 2. ELECTRICAL ZERO
- 3. TEST COIL - 500 ohms
- 4. MECHANICAL ZERO
- 5. INTERNAL CALIBRATION - 1000 ohms
- 6. SONDE ERROR
- 7. SURFACE CALIBRATION

CALIBRATION RECORD

COMPANY: CHEVRON OIL COMPANY
 WELL: CHEVRON-NARCO MAGMA J.D. JACKSON NO. 1
 FIELD: HEBER
 COUNTY: IMPERIAL STATE: CALIFORNIA

SCHL. FR: 1122
 SCHL. TD: 1128
 DRIL. TD: 1130
 Elev.: 775
 KB: 7
 DF: 5
 OL: -9



INDUCTION-ELECTRICAL SURVEY CALIBRATION CODING

- 1. MECHANICAL ZERO
- 2. ELECTRICAL ZERO
- 3. TEST COIL - 500 ohms
- 4. MECHANICAL ZERO
- 5. INTERNAL CALIBRATION - 1000 ohms
- 6. SONDE ERROR
- 7. SURFACE CALIBRATION

CALIBRATION RECORD

COMPANY: CHEVRON OIL COMPANY
 WELL: CHEVRON-NARCO MAGMA J.D. JACKSON NO. 1
 FIELD: HEBER
 COUNTY: IMPERIAL STATE: CALIFORNIA

SCHL. FR: 1122
 SCHL. TD: 1128
 DRIL. TD: 1130
 Elev.: 775
 KB: 7
 DF: 5
 OL: -9