

# NEXEL

## MICRO-SEISMOGRAM<sup>®</sup> LOG-CASED HOLE

COMPANY CHEVRON OIL COMPANY

WELL J. D. JACKSON ST. 112

FIELD HEBER

COUNTY TRIMBLE STATE CALIFORNIA

Location N19 Other Services: None

Sec. 1 Twp. 12N Rge. 3E

COM. 61 Elev. K.B. 2182

WELL 61 Elev. K.B. 2182

FIELD 61 Elev. K.B. 2182

County 61 Elev. K.B. 2182

Log Measured from 61 Elev. K.B. 2182

Drilling Measured from 61 Elev. K.B. 2182

Run No. 514

Date & Time Survey 8-2-24 @ 10:28

Date & Time Cementing 8-2-24 @ 21:28

Days Cementing Operation 18 1/2

Depth, Wells 1837

Logged Interval 1837 to 953

Casting Driller 826 to 883

Best Cement - 2116

Amount & Type Admix SEE REMARKS

Type Fluid in Hole WATER

Fluid Level 1837

Approx. Logged Cement Top 1837

Approx. Logged Cement Bottom 953

Calculated Cement Top 1837

Max. Hole Temperature 244.1

Log No. 4

Equipment - location 808 STZ

Recorded by K.B. Fitzgerald

Witnessed by M.R. B. Galloway

BORE HOLE RECORD		CASING RECORD	
Bit Size	From To	From To	Centralized Interval

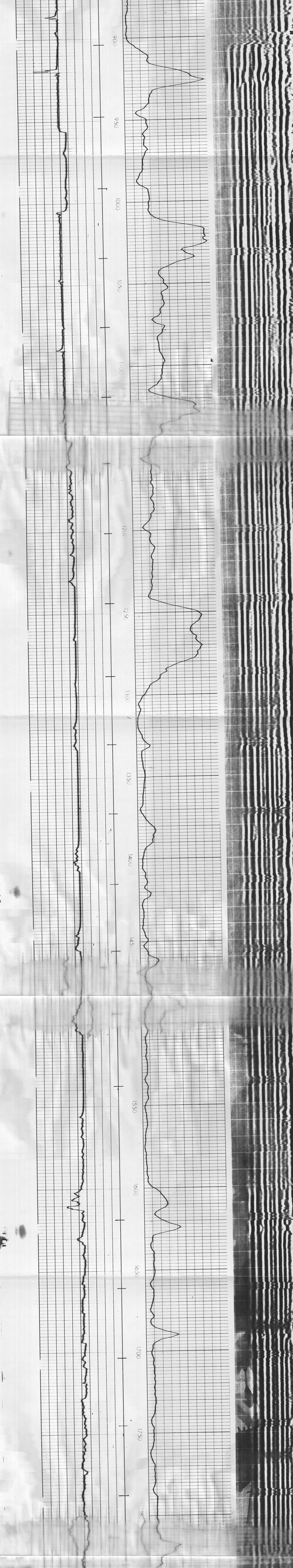
Welex does not guarantee the accuracy of any interpretation of log data, conversion of log data to physical rock parameters, or recommendations which may be given by Welex personnel or which may appear on the log or in any other form. Any user of such data, interpretations, conversions or recommendations agrees that Welex is not responsible, except where due to gross negligence or willful misconduct, for any loss, damage, or expenses resulting from the use thereof.

### COLLAR LOG

AMPLITUDE 200 MICRO/SECS. 1200

CEMENT BOND INCREASES

MICRO-SEISMOGRAM<sup>®</sup> LOG



free pipe @ 720 after log