

Schlumberger
SIMULTANEOUS
**COMPENSATED NEUTRON-
FORMATION DENSITY**

COUNTY IMPERIAL
 WELLS LAST MESA
 WELL NO. 55-19
 COMPANY REPUBLIC GEOTHERMAL, INC.
 FIELD EAST MESA
 COUNTY IMPERIAL STATE CALIFORNIA
 LOCATION 1.5 mi. N. of East Mesa, 5.1 mi. E. of Imperial
 DISTRICT 17 E
 SECTION 17 E
 TOWNSHIP 31 S
 RANGE 17 E
 ELEV. 628.5
 DATE 5-27-79
 DRAWING NO. 55-19-17E-31S-17E-17E
 DRAWING MEASURED FROM 150'

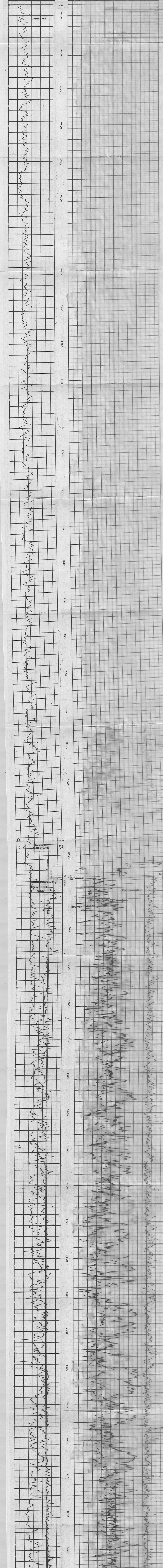
The well name, location and borehole reference data were furnished by the customer.

| DEPTH | Bottom | Parosity Scale | Matrix | Auto Corr. or Hole Size Setting | Parosity Scale | Grain Density | Liquid Density | Hole Fluid | Sens. Logged | 1. G | Sp. G |
|-------|--------|----------------|--------|---------------------------------|----------------|---------------|----------------|------------|--------------|------|-------|
| 2452 | 4476 | 60/TK | OH-55 | AUTO | 60/TK | 2.35 | 1.00 | LIQUID | 1.55 | 2 | 1.60 |

LOGGING DATA

| DEPTH | Bottom | Parosity Scale | Matrix | Auto Corr. or Hole Size Setting | Parosity Scale | Grain Density | Liquid Density | Hole Fluid | Sens. Logged | 1. G | Sp. G |
|-------|--------|----------------|--------|---------------------------------|----------------|---------------|----------------|------------|--------------|------|-------|
| 2452 | 4476 | 60/TK | OH-55 | AUTO | 60/TK | 2.35 | 1.00 | LIQUID | 1.55 | 2 | 1.60 |

All interpretations are opinions based on inference from electrical or other measurements and calculations. Schlumberger does not guarantee the accuracy or consistency of any interpretation, and we shall not accept the case of grain or matrix porosity for any part of the well or responsible for any loss, damage or expense incurred or sustained by anyone resulting from any interpretation made by any of our officers, agents or employees. These interpretations are also subject to Chapter 4 of our General Terms and Conditions as set out in our current Price Schedule.



COMPANY REPUBLIC GEOTHERMAL, INC.
 WELL NO. 55-19
 FIELD EAST MESA
 COUNTY IMPERIAL STATE CALIFORNIA

SCHL FR 4476
 SCHL TD 2452
 CUR TD 2452
 Elev. 628.5
 KB 55-19
 GI 17E-31S-17E-17E