

R. F. SMITH CORP.

GEOTHERMAL DATA LOG

COMPANY Republic Geothermal

WELL No. 56-10

FIELD East Mesa COUNTY Imperial

LOCATION SEC 10 T 35 S R 17 E

STATE California COUNTRY U.S.A.

LOGGING GEOLOGISTS Dale A. Robinson

PRESSURE INST. TYPE 16" to 2169'

DEPTH LOGGED DATE LOGGED FROM 0' TO 1000'

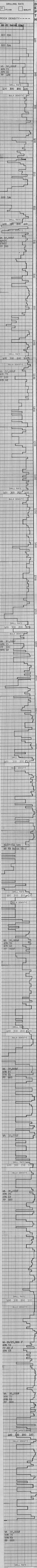
TEMP. TYPE - Thermocouple

DEPTH LOGGED DATE LOGGED FROM 0' TO 1000'

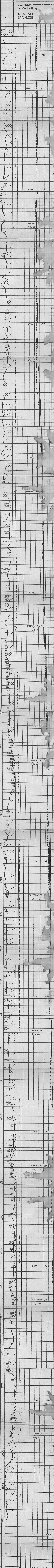
LITHOLOGY

- Sandstone
- Siltstone
- Graywacke Type #1
- Graywacke Type #2
- Graywacke Type #3
- Graywacke Type #4
- Chert
- Limestone
- MELANGE
- Solution Deposit
- Basalt or Greenstone
- Other Volcanic
- Tuff or Tuff Breccia
- Peridotite
- Igneous Rock
- Granitic Rock
- Schist
- Quartzite
- Serpentine

ENGINEERING DATA



AIR AND MUD DRILLING DATA



REMARKS

DESCRIPTION

CORE RESULTS

SURVEYS

FORMATION TESTS

MUD ELECTRIC

RESISTIVITY

METHANE ppm

ETHANE ppm

Pressure (PSIG) IN --- OUT ---

Pressure (PSIG) OUT --- IN ---

Methane (ppm) IN --- OUT ---

Ethane (ppm) IN --- OUT ---

Remarks section contains detailed geological observations and test results. Key observations include: 'Sandstone, white, fine to medium grained, well sorted, locally grading to siltstone', 'Siltstone, gray, fine to medium grained, locally grading to claystone', and 'Claystone, gray, fine to medium grained, locally grading to siltstone'. Test results for mud electric resistivity and methane/ethane content are also recorded.