

FILE NO. _____
 COMPANY GEO OPERATOR CORPORATION
 WELL PRATT #5
 FIELD GEYSERS
 COUNTY SONOMA STATE CALIFORNIA
 LOCATION 1259' N. & 104' E. OF S. E. OTHER SERVICES TRAMP
 SEC 35 TWP 12N RGE 9W
 Permanent Datum: CG 25 Elev. 2575' Elev. 2600'
 Log Measured from: KB 25 Ft. Above Permanent Datum of 2575'
 Logging Measured from: KB
 Date: 1-8-86
 Run No: 018
 Operator: 90
 Depth-Other: 2400'
 Depth-Logger: 2391'
 Bottom Logged Interval: 2389'
 Top Logged Interval: 280'
 Core-Other: 280' @ 280' @
 Core-Other: 280' @ 280' @
 Bit Size: 1 1/2"
 Type Fluid in Hole: LOWTENS
 Density and Viscosity: 6.5
 pH and Fluid Loss: 10 @ 1.1N cc
 Fract @ Mass Temp: 2.10 @ 100F
 Fract @ Mass Temp: 3.70 @ 75F
 Fract @ Mass Temp: 3.90 @ 75F
 Source of Fluid and Hinc: M 5.3 @ M
 Run Time: 1:52 @ 1:57
 Time on Core: 1:35
 Max. Inc. Temp. Day: 1:35
 Eulid. No. and Location: 6406 S.A.C.
 Recorded By: HINDS
 Witnessed By: MR. STERNBERG

FOLD HERE

In making interpretations of logs our employees will give Customer the benefit of their best judgment, but since all interpretations are opinions based on inferences from electrical or other measurements, we cannot and we do not guarantee the accuracy or the correctness of any interpretation. We shall not be liable or responsible for any loss, cost, damages, or expenses whatsoever incurred or sustained by the Customer resulting from any interpretation made by any of our employees.

Remarks

EQUIPMENT DATA

RUN NO. 1	RUN NO. 2	RUN NO. 3
CDL	CNLog	GR
2212	1309	
60580	72553	

CURVE DELAYS

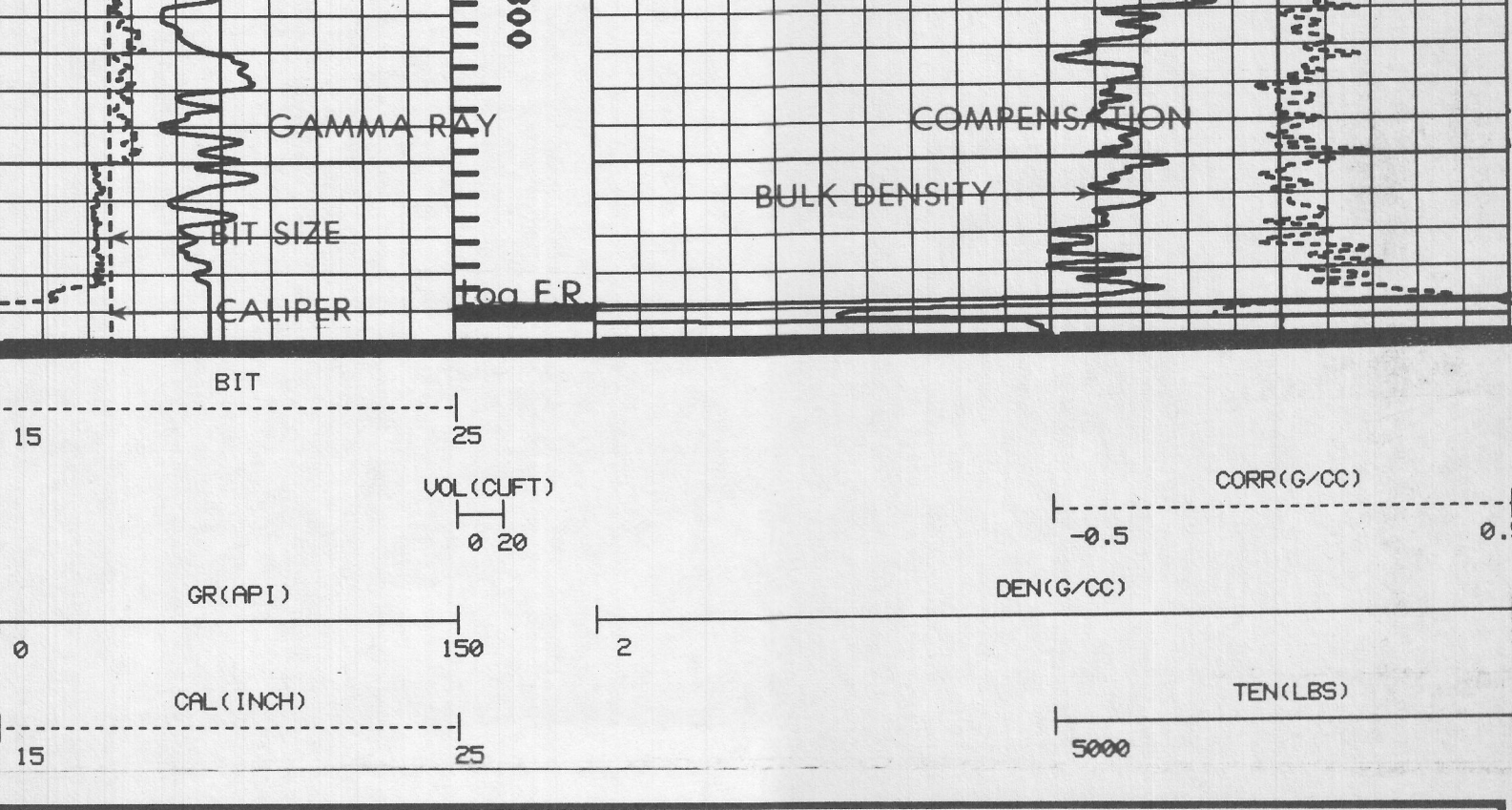
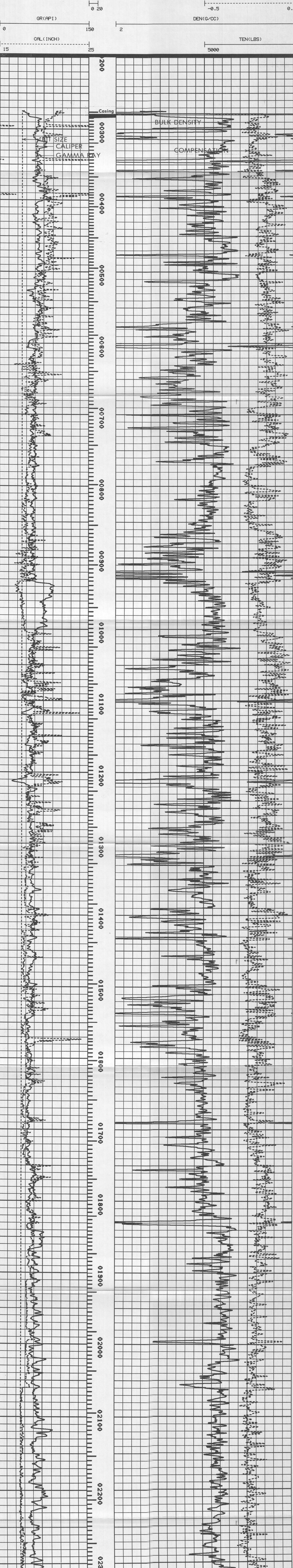
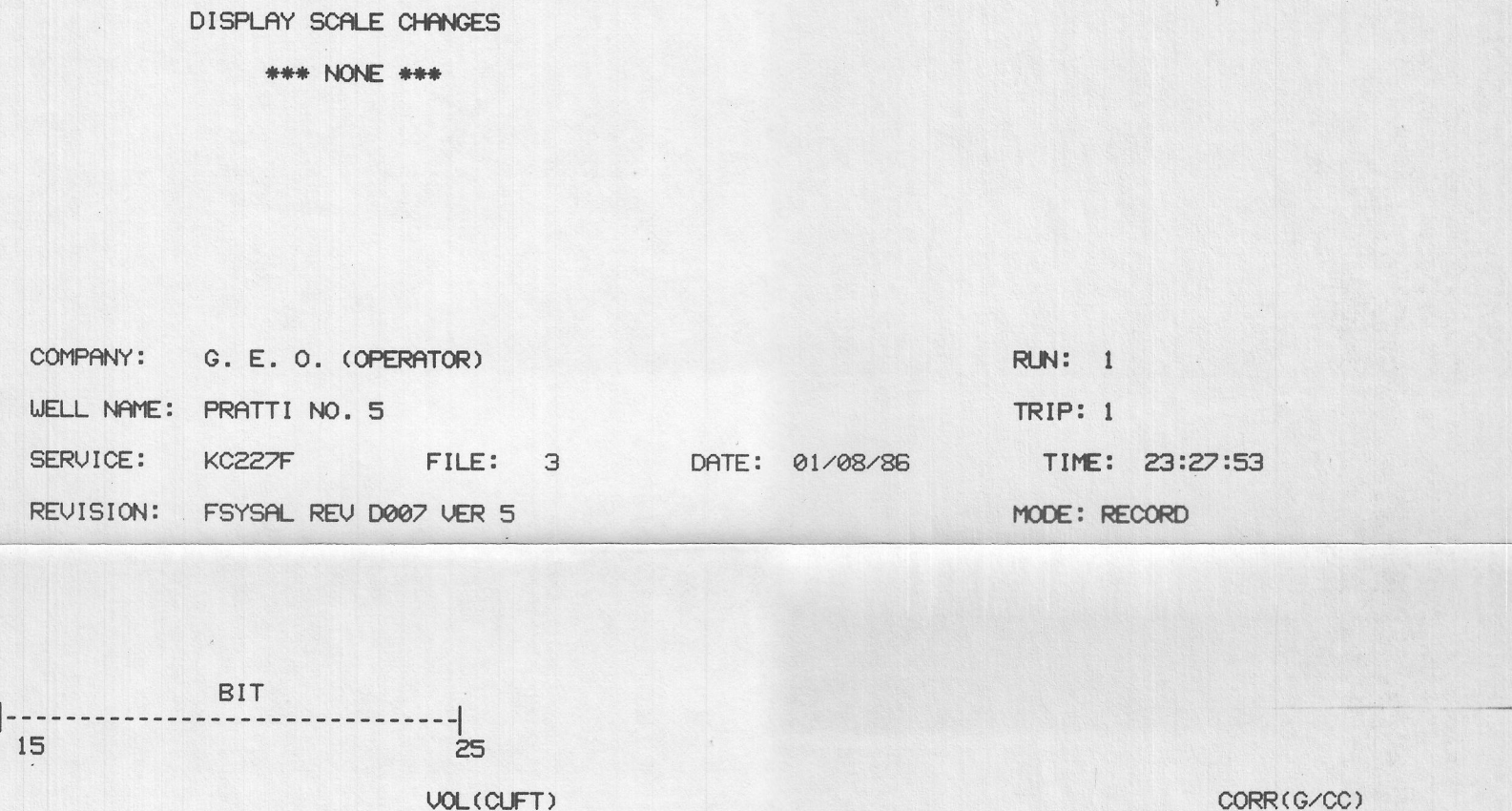
CURVE	DELAY	UNITS
SSD	0.3	FT, IN
LSD	0	FT, IN
CDL	0.0	FT, IN
SSN	5.5	FT, IN
LSN	10.0	FT, IN
GR	10.0	FT, IN
TEN	0.0	FT, IN
SPO	0.0	FT, IN

PARAMETERS

NAME	DEPTH INTERVAL	VALUE	UNITS
MATRIX	2388 TO 275	SANDSTONE	
O.D.	2388 TO 275	0.000	INCH
RHO F	2388 TO 275	0.980	G/CC
RHO M	2388 TO 275	2.650	G/CC

DISPLAY SCALE CHANGES
*** NONE ***

COMPANY: G. E. O. (OPERATOR) RUN: 1
 WELL NAME: PRATT NO. 5 TRIP: 1
 SERVICE: K0227F FILE: 3 DATE: 01/08/86 TIME: 23:27:53
 REVISION: FSYSPAL REV D007 VER 5 MODE: RECORD



Company	GEO OPERATOR CORPORATION	Drillers T.D.	2400'
Well	PRATT #5	Log F.R.	2389'
Field	GEYSERS	Log T.D.	2391'
County	SONOMA	Elevations:	
State	CALIFORNIA	K.B.	2600'
		D.F.	
		G.L.	2575'

