



GEOTHERMAL SPINNER FLOGS

COMPANY GEO OPERATOR CORPORATION
WELL PRATI #25
FIELD GEYSERS
COUNTY SONOMA
STATE CALIFORNIA

FILE NO. 5" = 100'
WELL PRATI #25
FIELD GEYSERS
COUNTY SONOMA
STATE CALIFORNIA
LOCATION: 2208' N. & 2707' W. OF THE S.E. CORNER OF:
TEMP SERVICES
CER
CR

Permanant Datum: G.L. 27' Elev. 2347'
Log Measured from: KB 2362'
Drilling Measured from: KB 2362'
OF: 2347'
Date: 5/29/86
Source Code: OPE
Depth - Diller: 12234.1
Depth - Logger: 8966.1
Bottom Logged Interval: 6992.2'
Bottom Logged Interval: 6992.2'
Casing - Diller: 11374' / 5750'
Casing - Logger: 5750'Bit Size: 2.0 5/8"

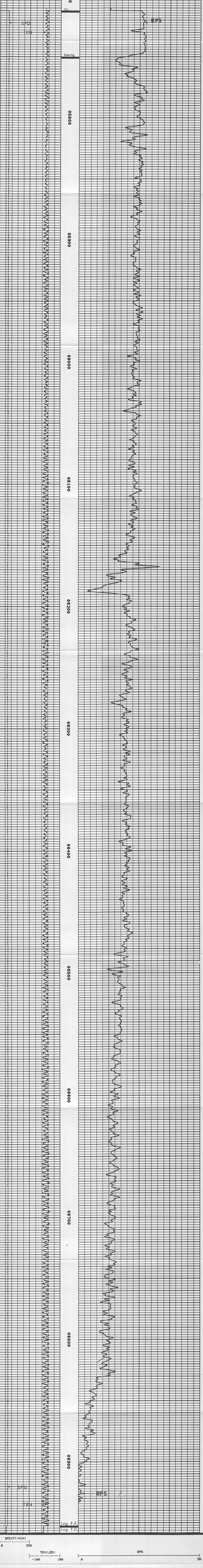
TYPE Fluid in hole	SIEMENS	cc	cc	cc
pH and Fluid loss				
Source of Sample				
Temp @ Mouth				
Temp @ 100'				
Temp @ 200'				
Temp @ 300'				
Temp @ 400'				
Temp @ 500'				
Temp @ 600'				
Temp @ 700'				
Temp @ 800'				
Temp @ 900'				
Temp @ 1000'				
Time Since Circ. Dam. F.	556.2	100'	100'	100'
Time Since Circ. Dam. F.	656.2	200'	200'	200'
Time Since Circ. Dam. F.	756.2	300'	300'	300'
Time Since Circ. Dam. F.	856.2	400'	400'	400'
Time Since Circ. Dam. F.	956.2	500'	500'	500'
Time Since Circ. Dam. F.	1056.2	600'	600'	600'
Time Since Circ. Dam. F.	1156.2	700'	700'	700'
Time Since Circ. Dam. F.	1256.2	800'	800'	800'
Time Since Circ. Dam. F.	1356.2	900'	900'	900'
Time Since Circ. Dam. F.	1456.2	1000'	1000'	1000'

IN MAKING INTERPRETATIONS OF LOGS OUR EMPLOYEES WILL GIVE THE CUSTOMER THE SAME WEIGHT TO ALL INFORMATION RECEIVED. ALL INTERPRETATIONS ARE OPINIONS BASED ON INFORMATION FROM ELECTRIC OR OTHER MEASUREMENTS. WE CANNOT AND WE DO NOT WARRANT THE ACCURACY OR PRECISION OF OUR LOGS. WE WILL NOT BE HELD LIABLE OR RESPONSIBLE FOR ANY LOSS, COST, DAMAGES, OR EXPENSES WHATSOEVER INCURRED OR SUSTAINED BY THE CUSTOMER RESULTING FROM ANY INTERPRETATION MADE BY ANY OF OUR EMPLOYEES.

REMARKS RUN (1)
TOOL FAILURE BELOW 6992
FOUR ADDITION ATTEMPTS MADE TO ACHIEVE LOG BELOW 6992

EQUIPMENT DATA			
RUN	TRIP	TOOL	POSITION
		SERIAL NO.	SERIES NO.
1	1	2143XR	75351
1	1	2143XR	75351

COMPANY: G.E.O. RUN: 1
WELL NAME: PRATI NO.25 TRIP: 1
SERVICE: KC428A FILE: 4 DATE: 5/29/86 TIME: 19:48:7
REVISION: FSYSL REV D007 VER 5 MODE: PLAYBACK



SPD (FT/MIN) 0 250
TEN (LBS) -100 100
RPS 0 50
Log F.R.
Log T.D.

