

Dresser Atlas
COMPENSATED
DENSITY LOG
GM-R

WELL: PRAT1 #25
 COMPANY: G.E.O. OPERATOR CORP.
 FIELD: GEYSERS
 COUNTY: SONOMA
 STATE: CALIFORNIA
 LOCATION: TRIP 2
 DATE: 05/06/86
 TIME: 08:15:43

IN ORDER TO INTERPRET LOGS OF THIS TYPE, THE USER MUST BE FAMILIAR WITH THE OPERATING PRINCIPLES OF THIS TYPE OF LOGGING. THE USER SHOULD BE ADVISED THAT THE LOGS ARE NOT TO BE USED FOR ANY PURPOSES OTHER THAN THAT FOR WHICH THEY WERE DESIGNED. THE USER SHOULD BE ADVISED THAT THE LOGS ARE NOT TO BE USED FOR ANY PURPOSES OTHER THAN THAT FOR WHICH THEY WERE DESIGNED.

REMARKS RUN (2)

EQUIPMENT DATA

RUN	TRIP	TOOL	SERIAL NO.	SERIES NO.	POSITION
1	1	CDL	6257B	2212	DE-CENT
2	2	CDL	6257B	2212	DE-CENT
3	3	CDL	6257B	2212	DE-CENT
4	4	CDL	6257B	2212	DE-CENT

CURVE DELAYS

CURVE	DELAY	UNITS
SSD	0.3	FT. IN
SD	0.0	FT. IN
CDL	0.0	FT. IN
SDI	0.0	FT. IN
SDN	0.0	FT. IN
SDO	0.0	FT. IN
TEN	0.0	FT. IN
SPD	0.0	FT. IN

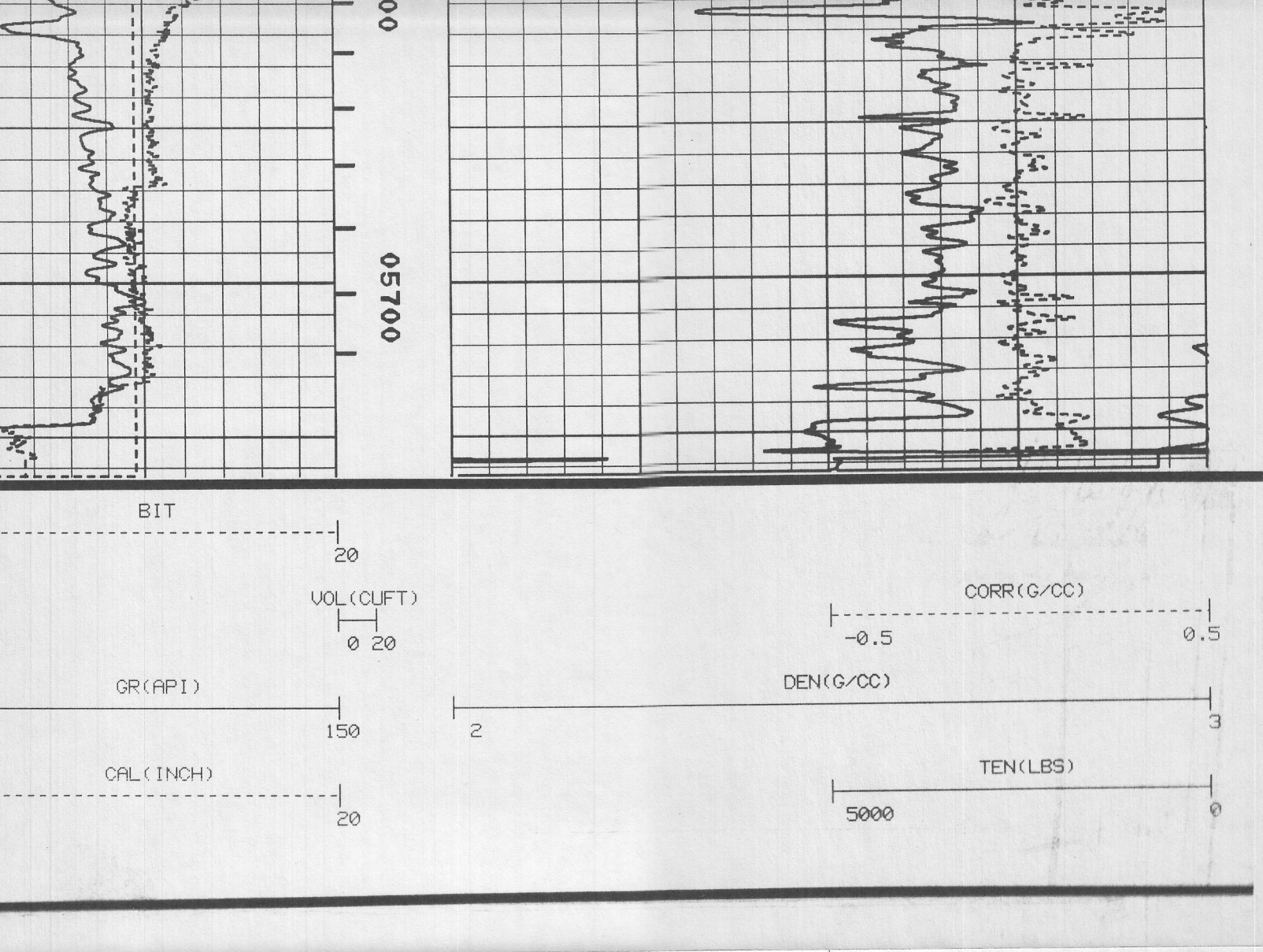
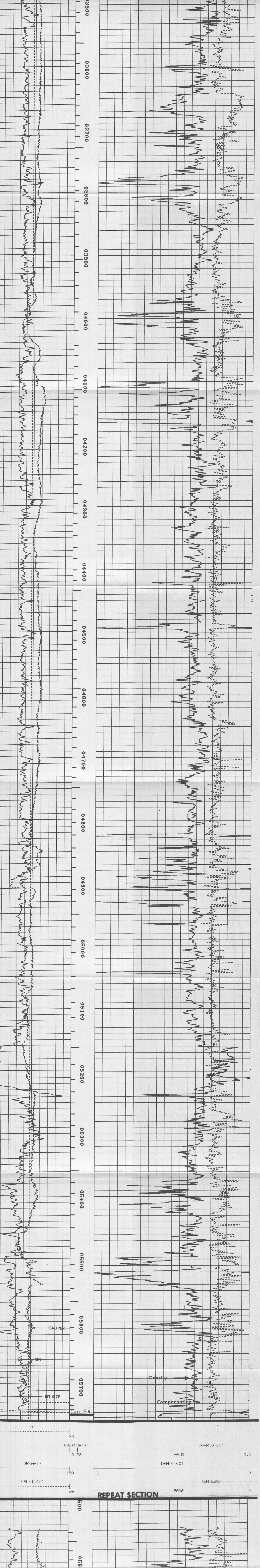
PARAMETERS

NAME	DEPTH	INTERVAL	VALUE	UNITS
MATRIX	2834	2370	LIMESTONE	
O.D.	2834	2370	11.375	INCH
RHO F	2834	2370	0.000	G/CC
RHO M	2834	2370	0.000	G/CC

DISPLAY SCALE CHANGES
 *** NONE ***

COMPANY: G.E.O. OPERATOR CORP.
 WELL NAME: PRAT1 NO.25
 SERVICE: K2227F
 REVISION: FSYSL REV D007 VER 5

RUN: 2
 TRIP: 2
 DATE: 05/06/86
 TIME: 08:06:59
 MODE: RECORD



CALIBRATION/VERIFICATION SUPPLIES

DATE 05/03/86 CALIBRATION TIME 08:15:43

CURVE	COUNTS/SEC. BLOCK	SCALING FACTORS	RATIO	ENG. VALUE	UNITS
LSD	NS	388.0		2.200	G/CC
SD	NS	251.7		0.000	G/CC
DEN	AL	182.6	1.0000	3.0015	G/CC
SDI	AL	235.3	1.0000	1.0000	G/CC
DEN	NSRV	282.7		2.800	G/CC
SD	NSRV	376.6		0.000	G/CC
DEN	NSRV			2.480	G/CC
CORR	NSRV			0.233	G/CC

DATE 05/03/86 PRIMARY VERIFICATION TIME 08:34:41

CURVE	LOW	HIGH	SCALING FACTORS	ENGINEERING VALUES	UNITS
LSD	AL	98.6	0.000	1.0000	G/CC
SD	AL	237.5	0.000	1.0000	G/CC
DEN	AL	98.6	0.000	1.0000	G/CC
CORR	AL	235.4	0.000	2.847	G/CC

DATE 05/05/86 BEFORE LOG VERIFICATION TIME 20:14:37

CURVE	LOW	HIGH	SCALING FACTORS	ENGINEERING VALUES	UNITS
LSD	AL	98.6	0.000	1.0000	G/CC
SD	AL	235.4	0.000	1.0000	G/CC
DEN	AL	98.6	0.000	1.0000	G/CC
CORR	AL	235.6	0.000	2.852	G/CC

DATE 05/06/86 AFTER LOG VERIFICATION TIME 08:12:49

CURVE	LOW	HIGH	SCALING FACTORS	ENGINEERING VALUES	UNITS
LSD	AL	98.6	0.000	1.0000	G/CC
SD	AL	235.6	0.000	1.0000	G/CC
DEN	AL	98.6	0.000	1.0000	G/CC
CORR	AL	235.6	0.000	2.852	G/CC

LOG NAME: GR ASSET NO. 60578 UNIT NO. 6406
 CALIBRATION ENTERED ON 05/06/86 AT 19:43:08

DATE 04/09/86 CALIBRATION TIME 13:45:25

CURVE	LOW	HIGH	SCALING FACTORS	ENGINEERING VALUES	UNITS
GR	1221.7	2291.2	0.0465	6.500	13.000 INCH

DATE 05/05/86 BEFORE LOG VERIFICATION TIME 20:10:37

CURVE	LOW	HIGH	SCALING FACTORS	ENGINEERING VALUES	UNITS
GR	E	2295.1	0.0465	E	12.963 INCH

DATE 05/06/86 AFTER LOG VERIFICATION TIME 08:15:49

CURVE	LOW	HIGH	SCALING FACTORS	ENGINEERING VALUES	UNITS
GR	E	2307.5	0.0465	E	12.798 INCH

LOG NAME: GR ASSET NO. 72964D UNIT NO. 6406
 CALIBRATION ENTERED ON 05/06/86 AT 19:58:19

DATE 05/05/86 CALIBRATION TIME 19:58:13

CURVE	LOW	HIGH	SCALING FACTORS	ENGINEERING VALUES	UNITS
GR	485.6	4231.9	0.000	0.0977	150.000 API

DATE 01-31-86 PRIMARY VERIFICATION TIME 15:50:17

CURVE	LOW	HIGH	SCALING FACTORS	ENGINEERING VALUES	UNITS
GR	1821.6	4322.3	0.000	0.1093	44.329 187.954 API

DATE 05-05-86 BEFORE LOG VERIFICATION TIME 20:09:21

CURVE	LOW	HIGH	SCALING FACTORS	ENGINEERING VALUES	UNITS
GR	509.5	3732.8	0.000	0.0977	20.482 151.888 API

DATE 05/06/86 AFTER LOG VERIFICATION TIME 08:15:29

CURVE	LOW	HIGH	SCALING FACTORS	ENGINEERING VALUES	UNITS
GR	481.6	3889.9	0.000	0.0977	19.293 155.753 API

