

Well information form including fields for COMPANY, WELL, FIELD, COUNTY, STATE, LOCATION, and well parameters like SERVO, WEL, and DEN.

IN READING INTERPRETATIONS OF LOGS OUR... IN THE INTERESTS OF THE COMPANY... THE RECORD OF CORRECTNESS...

REMARKS RUN ( 2 )
VOLUME COMPUTED FOR OPENHOLE... TOOL ON BOTTOM AT 5256 HRS.

EQUIPMENT DATA table with columns: RUN, TRIP, TOOL, SERIAL NO., SERIES NO., POSITION.

CURVE DELAYS table with columns: CURVE, DELAY, UNITS.

PARAMETERS table with columns: NAME, DEPTH, INTERVAL, VALUE, UNITS.

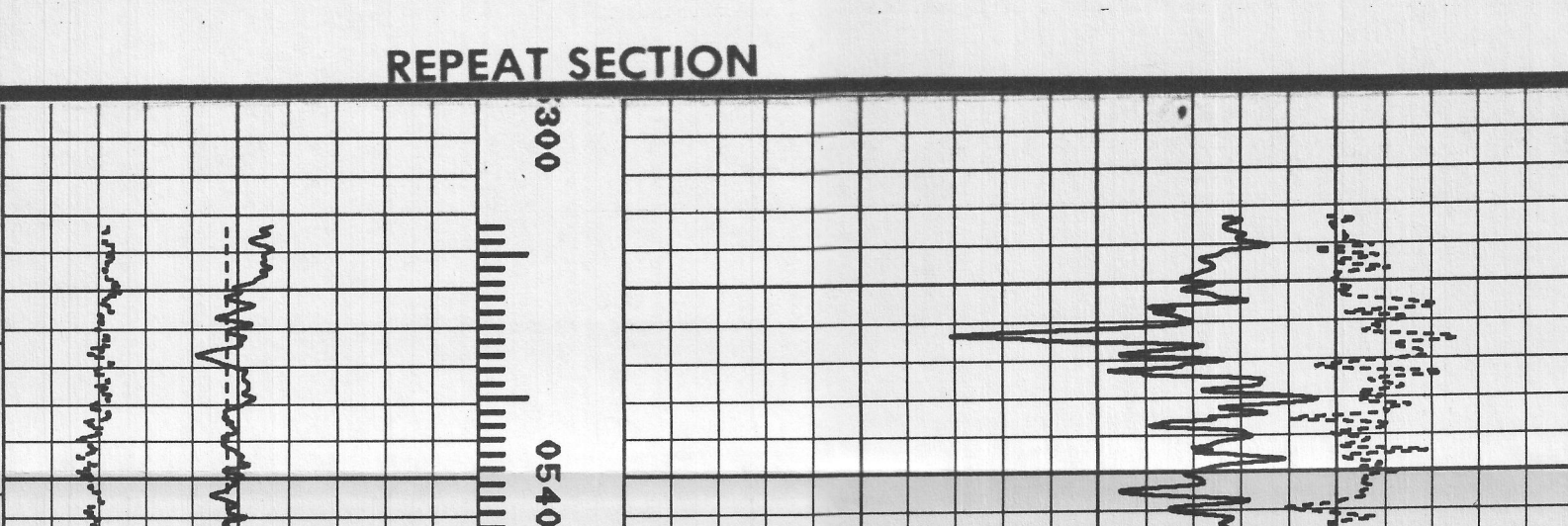
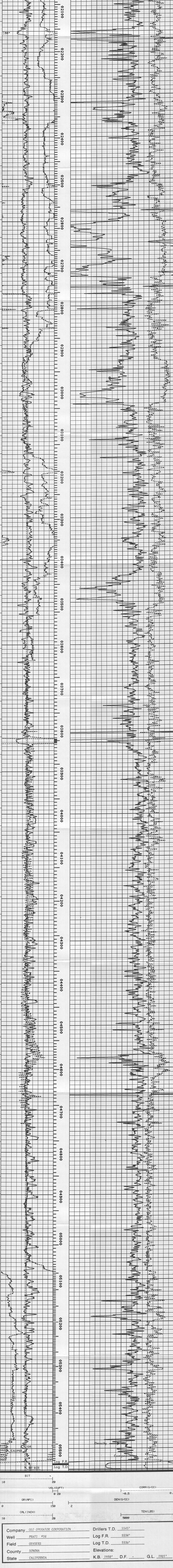
DISPLAY SCALE CHANGES: \*\*\* NONE \*\*\*

COMPANY: G. E. O., OPERATOR CORP. RUN: 2

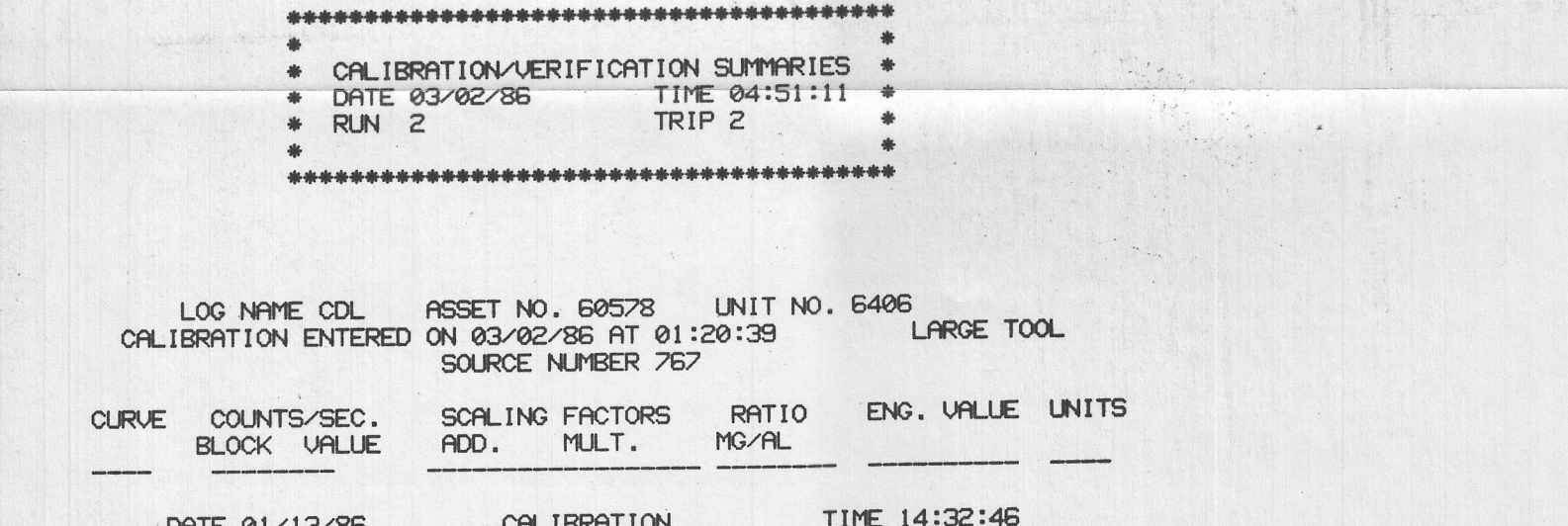
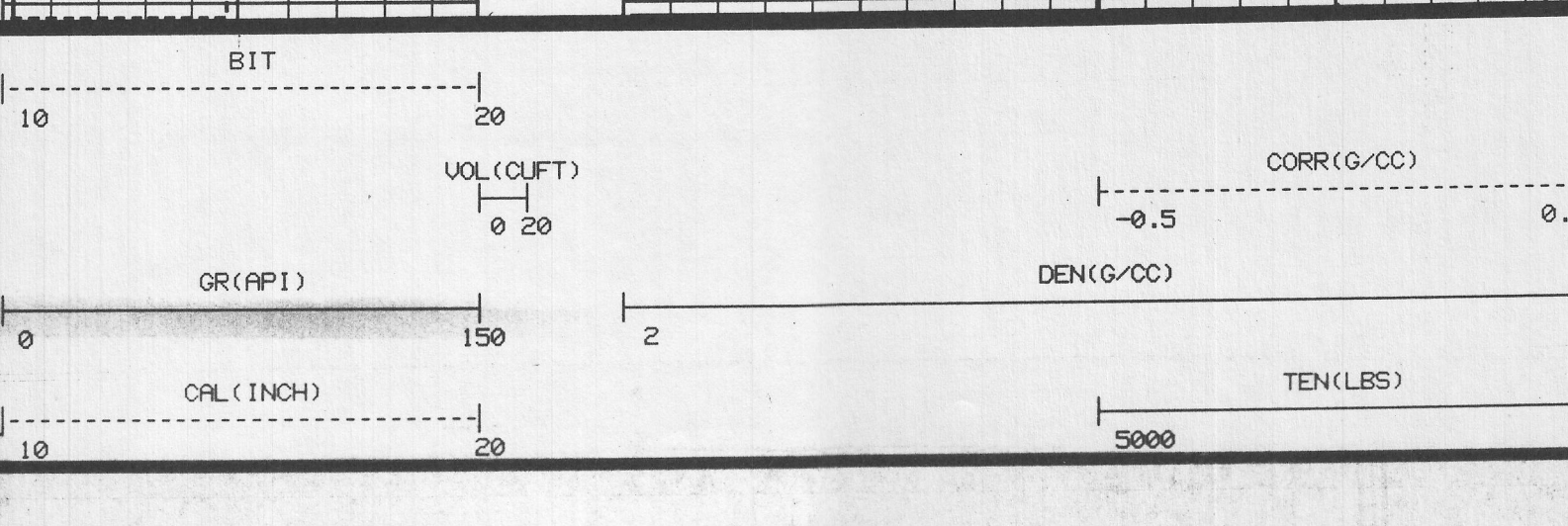
WELL NAME: PRATI #58 TRIP: 2

SERVICE: KC227 FILE: 3 DATE: 03-02-86 TIME: 02:53:49

REVISION: FVSYSL REV 0007 VER 5 MODE: RECORD



Summary table with fields: Company, Well, Field, County, State, Drillers T.D., Log F.R., Elevations.



Calibration and Verification Summary table with columns: LOG NAME, COL, ASSET NO., UNIT NO., DATE, CURVE, COUNTS/SEC, SCALING FACTORS, etc.

