



FILE NO. _____ COMPANY G.E.O.
 WELL R10 IN NO.1
 FIELD GEVERS
 COUNTY SANORA STATE CALIF.
 LOCATION: 415 S. SOUTH AVE 932.0 WEST OF MARSHES OPEN TAP LIN RGE 34
 PERMIT ORDN. G.L. _____ ELEV. 1251
 DRILLING MEASURED FROM K.B. 22 FT. ABOVE P.O. OF 1281
 DATE 2-1-62
 OTHER SERVICES CR

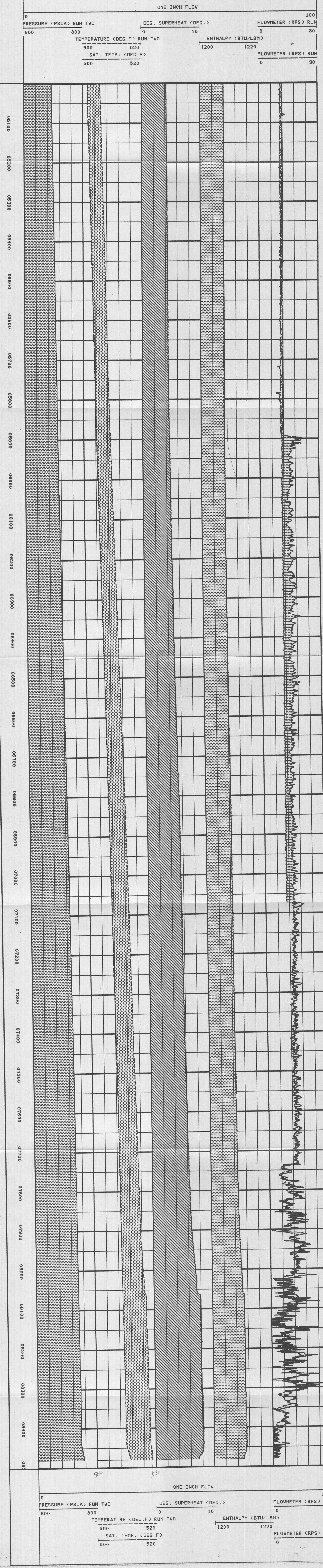
DATE 1/15/67
 RUN 1
 SERVICE ORDER 12774
 DEPTH-DRILLER 8429
 BOTTOM-LOCKER 8490
 TOP-LOCKER INTERVAL 2500
 TYPE FLUID IN HOLE STEAM
 STAINITY PPM O.
 DENSITY LB/FT³ 818
 LOG REC TEMP. DEG. F 818
 COR. REC TIME
 EQUIP. NO. / LOC. 532 / BRK
 LENDOR
 RECORDED BY RR. JEFFERS
 HINNED BY
 NO. BIT FROM 10

IN MAKING INTERPRETATIONS OF LOGS OUR EMPLOYEES WILL GIVE CUSTOMER THE BENEFIT OF THEIR BEST JUDGMENT, BUT SINCE ALL INTERPRETATIONS ARE OPINIONS BASED ON MEASUREMENTS, WE CANNOT, AND WE DO NOT GUARANTEE THE ACCURACY OR SURENESS OF ANY INTERPRETATION. WE SHALL NOT BE LIABLE FOR DAMAGES, OR EXPENSES, WHATSOEVER, INCURRED OR SUFFERED BY THE CUSTOMER RESULTING FROM ANY INTERPRETATION MADE BY ANY OF OUR EMPLOYEES.

FOLD HERE	SIZE	WGT	FROM	TO	OSING RECORD
	7 5/8	389	1312	774	
	13 3/8	84	1364	1364	

REMARKS RUN (1) MAX. THERMS = 518

RUN	TRIP	TOOL	SERIAL NO.	SERIES NO.	POSITION
1	1	TEMP	94147	2175XA	CENT
1	1	PRES	94149	2173XA	CENT



DEPTH FT	PRES PSIA	TEMP. DEG. F	T SAT. DEG. F	DEG. SUP. DEG. F	ENTH. BTU/LB	DENS. LB/FT ³
5000.00	693.81	505.97	501.70	4.27	1208.00	1.4947
5100.00	695.75	506.29	502.02	4.27	1207.99	1.4991
5200.00	697.13	506.64	502.25	4.39	1208.05	1.5019
5300.00	699.06	506.94	502.55	4.39	1207.97	1.5061
5400.00	701.25	507.25	502.90	4.39	1207.95	1.5112
5500.00	703.96	507.57	503.19	4.39	1207.94	1.5152
5600.00	706.31	507.88	503.54	4.33	1207.85	1.5204
5700.00	706.94	508.21	503.80	4.41	1207.82	1.5238
5800.00	706.69	508.53	504.06	4.51	1207.91	1.5274
5900.00	710.59	509.00	504.38	4.63	1208.03	1.5312
6000.00	712.90	509.35	504.68	4.67	1208.00	1.5340
6100.00	714.62	509.74	505.02	4.72	1207.99	1.5400
6200.00	716.56	510.07	505.30	4.75	1207.95	1.5442
6300.00	718.06	510.44	505.56	4.88	1208.07	1.5471
6400.00	719.82	510.83	505.80	5.03	1208.23	1.5500
6500.00	721.81	511.21	506.14	5.06	1208.24	1.5548
6600.00	723.44	511.56	506.40	5.16	1208.26	1.5581
6700.00	725.19	511.92	506.67	5.25	1208.36	1.5617
6800.00	726.75	512.31	506.91	5.40	1208.45	1.5646
6900.00	727.94	512.65	507.10	5.55	1208.63	1.5667
7000.00	729.88	512.92	507.40	5.52	1208.55	1.5712
7100.00	730.81	513.18	507.54	5.63	1208.63	1.5752
7200.00	732.38	513.48	507.73	5.69	1208.71	1.5782
7300.00	733.81	513.79	508.01	5.78	1208.76	1.5790
7400.00	735.31	514.07	508.24	5.83	1208.79	1.5822
7500.00	736.87	514.40	508.48	5.92	1208.87	1.5854
7600.00	737.75	514.75	508.61	6.13	1209.06	1.5885
7700.00	739.13	515.00	508.83	6.23	1209.11	1.5892
7800.00	740.19	515.37	508.89	6.38	1209.26	1.5909
7900.00	741.06	515.70	509.12	6.57	1209.43	1.5921
8000.00	741.56	516.38	509.26	7.18	1210.12	1.5907
8100.00	743.06	517.39	509.43	7.96	1210.91	1.5908
8200.00	744.44	517.60	509.64	7.96	1210.91	1.5939
8300.00	745.69	517.78	509.83	7.95	1210.91	1.5967
8400.00	746.44	518.19	509.94	8.24	1211.21	1.5972

