

GEO THERMAL DATA LOG

GL0436

Company **GEO THERMAL ENERGY PARTNERS LTD.**

Well Name **AIDLIN #6 SIDETRACK**

Field **GEYSERS**

County **SONOMA** State **CALIFORNIA**

Location **SEC 4, T14N, R9M**
SEC 4, T14N, R9M

Elevation **1258' ± 29" to RM**

Contractor/Log. NCPA #
SPUD Date **1/24/89** TO Date **3/29/93**

TD **11,345'** True Vertical Depth **10,711'**

Bottom Hole Location **999.30'S, 2102.12'W**

Well Status **Producing**

Company Representative **DON QUINN**

LOGGED INTERVAL

Date Logged **3/9/93** to **3/29/93**

Depth Logged **7,860'** to **11,345'**

Mud Drilling **7,860'** to **7,966'**

Air Drilling **7,966'** to **11,345'**

Temperature Instrument Type **T TYPE THERMOCOUPLE**

Log Scale **1:600** Unit Number **317**

Log Prepared By **LES DRAKE**
DOUG GOODWIN

HOLE SIZE	CASING
26" to 603' 13" at 598'	
17.5" to 498' 20" at 4788'	
12.25" to 7860' 9.63" at 7860'	
8.50" to 11345' at	

LITHOLOGY SYMBOLS		
Clay	Argillite	Siltstone
Graywacke Type 1	Chert	Schist
Graywacke Type 2	Serpentine	Feilstone
Graywacke Type 3	Quartzite	Quartzite
		Quartzite

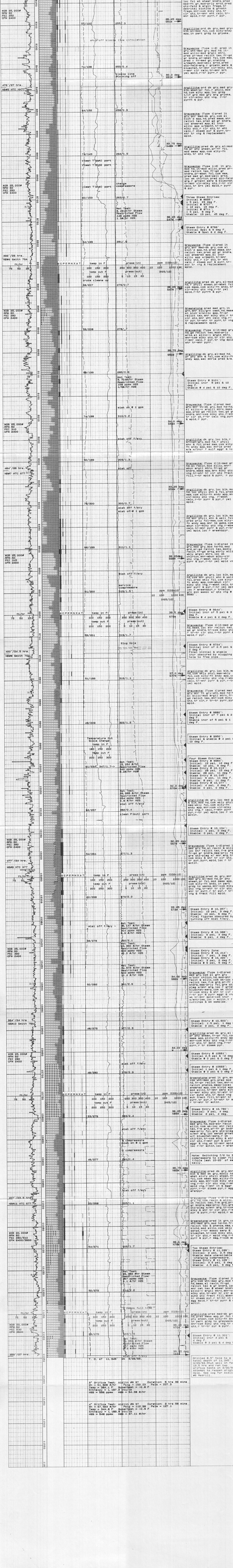
REMARKS: 7849' Losing 200+ bbls/hr

ABBREVIATIONS: NB New Bit, RB Re-Run Bit, CB Core Bit, MW Weight On Bit, SPM Strokes/Minute

SECONDARY MINERALS: Q = Quartz, C = Calcite, P = Pyrite, E = Epidote, X = Pyrrhotite, A = Actinolite, T = Tourmaline

LOG SYMBOLS: Wireline Log, Casing Shoe, Steam/Water Entry, Deviation Survey, Core Interval

LOGGING DATA: RATE OF PENETRATION (ft/hr), TEMPERATURE OUT (deg F), TEMPERATURE IN (deg F), TOTAL PIT VOLUME (bbl), METHANE (ppm), CARBON DIOXIDE (x100)



3" Drifac Test: AIDLIN #6 ST Duration: 5 hrs 36 mins
Temp = 364.8 F Pressure = -0.8 F
Enthalpy = 4.587 HSE = 34.38 #/hr

4" Drifac Test: AIDLIN #6 ST Duration: 2 hrs 56 mins
Temp = 344.8 F Pressure = -0.8 F
Enthalpy = 1.089 HSE = 37.51 #/hr