

FILE NO. **2979**
 WELL **MISSION POWER**
 FIELD **CLAYTON**
 COUNTY **SWAMI**
 STATE **DEL.**

LOCATION: **194' NORTH AND 294' WEST OF SOUTHWEST CORNER SECTION 32**
 SEC: **32** TWP: **12N** R: **06E**
 ELEVATIONS: **192** FT. ABOVE P.D. **2** 1975

DRILLING MEMORANDUM FROM **K.B. 29** TO **FT. BOONE P.D. 2** 1975
 DATE **12/22/88**
 SERVICE ORDER **1**
 DEPTH **1000**
 BOTTOM LOGGED INTERVAL **10675**
 TYPE FLUID IN HOLE **STEM**
 SHALINITY **FM O.I.**
 LENGTH **1000**
 HMR. REC. TEMP. DEG. F **553**
 OPR. RIG TIME **7** HRS.
 EQUIP. NO. / LOG. **6535**
 RECORDED BY **LENNIE**
 INTERSECTED BY **NR. OPENHOLE RECORD**
 NO. **7**
 ONE **8 1/2"** **8939** **10** **10818**

FINAL PRINT
LAC ANALYSIS

IN MAKING INTERPRETATIONS OF LOGS OUR EMPLOYEES WILL GIVE CREDIT THE BEST OF OUR KNOWLEDGE AND SKILL. IF THERE ARE ANY INTERFERENCES FROM ELECTRICAL OR OTHER INSTRUMENTS, WE CANNOT, AND WE DO NOT GUARANTEE THE ACCURACY OR CORRECTNESS OF THE LOGS. WE ARE NOT RESPONSIBLE FOR ANY LOSSES, COSTS, DAMAGES, OR EXPENSES WHATSOEVER INCURRED OR SUSTAINED BY THE CUSTOMER RESULTING FROM ANY INTERPRETATION MADE BY ANY OF OUR EMPLOYEES.



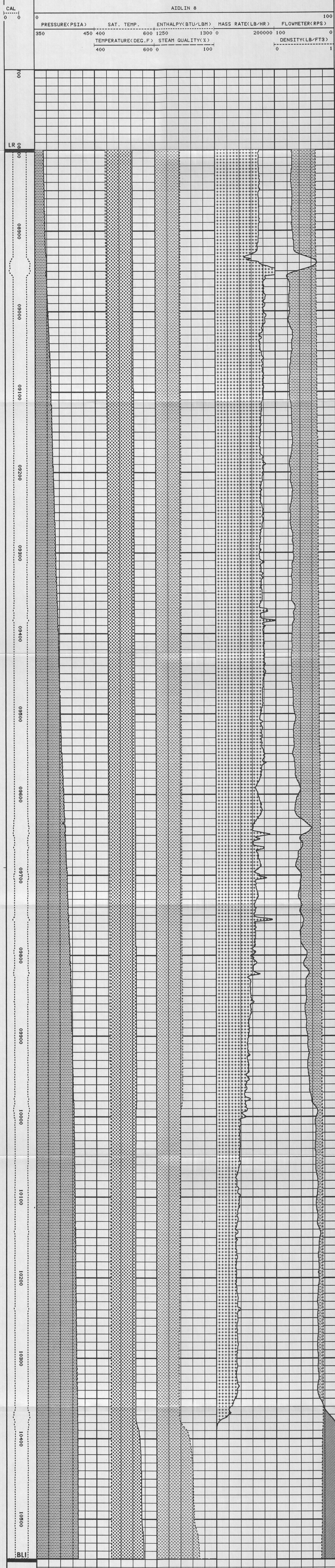
SIZE	WT	FRONT	TO
13 3/8	49.45	Q	4973
18 3/4	43	Q	8723
3 5/8	43	Q	8723

REMARKS RUN (1)
 SURFACE DAT TEMP. 40°F, PRESS. 139PSIG
 FLOW RATE 156.000 GPM
 FLOWMETER RESTRICTOR SET 1" BOTTOM, TOP 1/2"
 SPINNER 1, 1 1/2" DIA., 3" PITCH, 4 BLADES
 STARTED LOG @ 11:15, REACHED TO RT @ 6:30
 MAX. TEMPS 555°F, 554°F

EQUIPMENT DATA

RUN	TRIP	TOOL	SERIAL NO.	SERIES NO.	POSITION
1	1	TEMP	94149	2173XA	CENT
1	1	PRES	94147	2175XA	CENT

MISSION POWER
 AIDLIN NO.8
 070-0700
 09040



BLI:

DEP	GRC	TEMP	TSAT	ETD1	DEN1	DIAM	FSFN	MFL0
10550.00	419.00	557.21	448.76	1285.86	0.75	8.40	0.00	540.06
10500.00	418.45	549.57	448.63	1281.39	0.76	8.05	0.00	531.88
10450.00	418.72	548.32	448.69	1280.39	0.76	8.00	0.00	525.24
10400.00	418.46	543.43	448.63	1277.34	0.76	8.00	0.00	525.10
10350.00	417.53	539.08	448.41	1268.88	0.78	8.00	36.84	61860.18
10300.00	417.07	530.04	448.30	1268.88	0.78	8.00	30.20	67828.06
10250.00	416.14	530.18	448.08	1269.07	0.77	8.00	31.54	69375.06
10200.00	415.12	530.64	447.94	1269.41	0.77	8.00	29.20	69207.42
10150.00	414.49	530.53	447.69	1269.48	0.77	8.00	27.76	61867.04
10100.00	413.92	530.54	447.56	1269.55	0.77	8.00	32.00	70062.94
10050.00	413.13	530.63	447.38	1269.68	0.77	8.00	34.90	76243.44
10000.00	412.45	530.96	447.21	1269.97	0.77	8.00	33.49	96111.44
9950.00	411.05	533.54	446.87	1271.79	0.76	8.00	45.91	99937.12
9900.00	409.58	533.17	446.58	1271.71	0.76	8.00	48.23	106729.63
9850.00	408.20	533.67	446.19	1271.72	0.75	8.00	50.32	113294.00
9800.00	406.20	532.18	445.71	1271.42	0.75	9.11	45.12	119186.69
9750.00	403.84	531.60	445.14	1271.30	0.75	8.00	58.14	125178.75
9700.00	401.76	531.11	444.63	1271.20	0.74	8.00	78.63	144380.69
9650.00	398.69	530.77	443.83	1271.30	0.74	10.63	55.47	173880.00
9600.00	396.21	530.41	443.27	1271.33	0.73	8.00	62.90	188226.69
9550.00	393.35	529.79	442.58	1271.23	0.73	8.00	73.30	161773.00
9500.00	391.66	529.38	442.15	1271.14	0.72	8.71	69.54	148800.31
9450.00	389.80	529.11	441.69	1271.17	0.72	8.67	74.38	164447.25
9400.00	388.69	529.33	441.26	1271.17	0.72	8.77	73.51	157362.53
9350.00	388.91	529.45	440.72	1271.15	0.71	8.67	73.69	153348.19
9300.00	384.26	528.07	440.30	1271.00	0.71	8.58	71.68	146031.62
9250.00	382.26	527.74	439.80	1271.00	0.71	8.64	76.23	156484.44
9200.00	380.37	527.40	439.32	1271.00	0.70	8.76	75.96	159262.90
9150.00	378.52	527.00	438.85	1271.00	0.70	8.67	73.10	149602.75
9100.00	376.82	526.69	438.42	1270.99	0.70	8.69	76.88	157476.81
9050.00	374.44	526.25	437.91	1270.95	0.69	8.79	72.68	151232.94
9000.00	373.93	525.80	437.16	1270.93	0.69	8.94	76.09	162671.19
8950.00	369.23	525.46	436.46	1271.00	0.68	13.94	60.42	312276.88
8900.00	367.16	525.00	435.96	1270.92	0.68	8.78	71.70	149023.69
8850.00	365.25	524.70	435.63	1270.93	0.68	8.69	72.10	150180.69
8800.00	364.52	524.42	435.23	1270.84	0.67	8.72	72.64	145873.75

** INTERNAL AVERAGES

0.00	397.20	531.17	443.45	1271.68	0.73	8.78	51.89	113535.00
------	--------	--------	--------	---------	------	------	-------	-----------

MISSION POWER
 AIDLIN NO.8
 070-0700
 09040

SERVICE TABLE ***GTHL *** FILE LABEL # 1
 TAPE LEVEL SPACING : 0.50 TAPE STARTING DEPTH : 10550.00
 PRINT LEVEL SPACING : 0.00 TAPE ENDING DEPTH : 8800.00

** UNITS OF MEASURE **
 DEPTH DEPTH FT
 CALIPER CALIPER IN/FT
 TENSION TENSION LBS
 TEMPERATURE TEMPERATURE F
 PRESSURE PRESSURE PSI
 VOLUME VOLUME FT3

*** END OF LIST ***