

GEOHERMAL DATA LOG

LITHOLOGY SYMBOLS

- Clay
- Graywacke Type 1
- Graywacke Type 2
- Graywacke Type 3
- Argillite
- Chert
- Greenstone
- Serpentine
- Siltstone
- Schist
- Feisite
- Quartz
- when >10X

LOG SYMBOLS

- Wireline Log
- Steam/Water Entry
- Deviation Survey
- Casing Shoe
- Orifice/Flow Test
- Cored Interval
- Recovery

SECONDARY MINERALS

- Q = Quartz
- C = Calcite
- P = Pyrite
- E = Epidote
- Py = Pyrrhotite
- A = Actinolite
- X = Xantholite

ABBREVIATIONS

- NB New Bit
- RB Re-Run Bit
- CB Core Bit
- WOB Weight On Bit
- SPM Strokes/Minute
- RHT Bottom Hole Temp
- CBT Carbide Test
- NR No Returns
- LAT Logged After Trip
- CFM Cubic Feet/Minute

Company **GEOHERMAL ENERGY PARTNERS LTD.**

Well Name **AIDLIN #9 SIDETRACK #1**

Field **GEYSERS**

County **SONOMA** State **CALIFORNIA**

Location **SEC 4, T14N, R9W**

Elevation **1256' +29' to KB**

Contractor/Rig **NCPA #1**

Spud Date **5/4/92** TO Date **10/17/92**

TD **10,348'** True Vertical Depth **9,845'**

Bottom Hole Location **682.7'N, 1643.4'E**

Well Status **Temporarily Plugged**

Company Representative **DON QUINN**

LOGGED INTERVAL

Date Logged **9/25/92** to **10/18/92**

Depth Logged **7,549'** to **10,348'**

Mud Drilling **7,549'** to **7,739'**

Air Drilling **7,739'** to **10,348'**

Temperature Instrument Type **T TYPE THERMOCOUPLE**

Log Scale **1:600** Unit Number **317**

Log Prepared By **LES DRAKE**
WAYNE MONGER

HOLE SIZE CASING

26" to 579'	20" at 579'
17.5" to 4814'	13.38" at 4814'
12.25" to 7764'	9.63" at 7550'
8.50" to 10348'	at

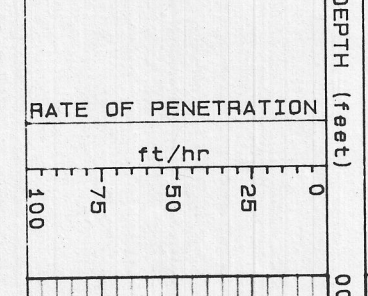
STEAM ENTRIES

8656' 34. 18°F	9114' 214. 2°F
8689' 39. 7°F	9419' 164. 8°F
8824' 14. 7°F	9422' 124. 7°F
8897' 15. 2°F	9438' 134. 5°F
8909' 34. 1°F	9468' 24. 1°F
8920' 124. 2°F	9633' 74. 0°F
8933' 154. 0°F	9819' 44. 3°F
8983' 54. 3°F	

LOST CIRCULATION ZONES

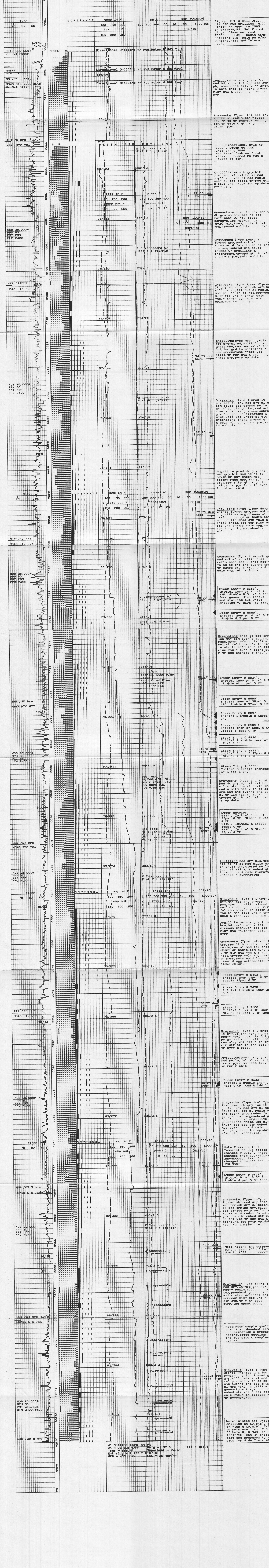
REMARKS

Baker plug set at 7400' for
AidlIn #9 Sidetrack #2



GEOHERMAL DATA LOG

Geothermal Energy Partners/GeothermEx AIDLIN #9 ST#1
Scale 1:600



4" Orifice Test: SC #1
In = 76.385 g/hr
Out = 383.77 g/hr
Enthalpy = 4.132.5 Btu/lb
H2S = 455 ppm

SC #2
In = 137.0
Out = 24.6F
H2S = 36.454/hr

Pressure = 131.1