

# GEO THERMAL DATA LOG

On Map A-49 ST 3  
 Company GEOTHERMAL ENERGY PARTNERS LTD.  
 Well Name AIDLIN #9 SIDETRACK #1, Redr111  
 Field GEYSERS  
 County SONOMA State CALIFORNIA  
 Location 3850' N, 4697' E of SE CORNER  
 SEC 4, T11N, R9W  
 Elevation 1256' ±29' to KB  
 Contractor/Rig NCPA #1  
 Spud Date 5/4/92 TO Date 12/7/92  
 TD 10,820' True Vertical Depth 10,877'  
 Bottom Hole Location 1,303.97' N, 1678.37' E  
 Well Status Producing  
 Company Representative DON GUINN

| HOLE SIZE       | CASING          |
|-----------------|-----------------|
| 26" to 579'     | 20" at 579'     |
| 17.5" to 4814'  | 13.36" at 4814' |
| 12.25" to 7750' | 9.63" at 7750'  |
| 8.50" to 10820' | at              |
|                 | to              |
|                 | at              |

### LITHOLOGY SYMBOLS

|                  |            |           |
|------------------|------------|-----------|
| Clay             | Argillite  | Siltstone |
| Graywacke Type 1 | Chert      | Schist    |
| Graywacke Type 2 | Greenstone | Felsite   |
| Graywacke Type 3 | Quartz     | when >10% |

### LOG SYMBOLS

Wireline Log  
 Steam/Water Entry  
 Deviation Survey  
 Casing Shoe  
 Drift/Flow  
 Cased Interval  
 No Recovery

### SECONDARY MINERALS

G = Quartz  
 C = Calcite  
 P = Pyrite  
 E = Epidote  
 H = Pyrrhotite  
 X = Actinolite  
 A = Actinolite  
 T = Tourmaline

### ABBREVIATIONS

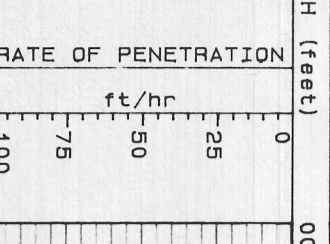
NB New Bit  
 RB Re-Run  
 CB Core Bit  
 WOB Weight On Bit  
 RPM Revolutions/Minute  
 BH Bottom Hole Temp  
 NHT No Returns  
 LAT Logged After  
 SPM Stroke/Minute

### LOGGED INTERVAL

Date Logged 11/18/92 to 12/7/92  
 Depth Logged 7,550' to 10,820'  
 Mud Drilling 7,550' to 7,733'  
 Air Drilling 7,733' to 10,820'  
 Temperature Instrument Type T TYPE THERMOCOUPLE  
 Log Scale 1:600 Unit Number 317  
 Log Prepared by LES DRAKE  
 WAYNE MONER  
 KURT LEINHAUPEL

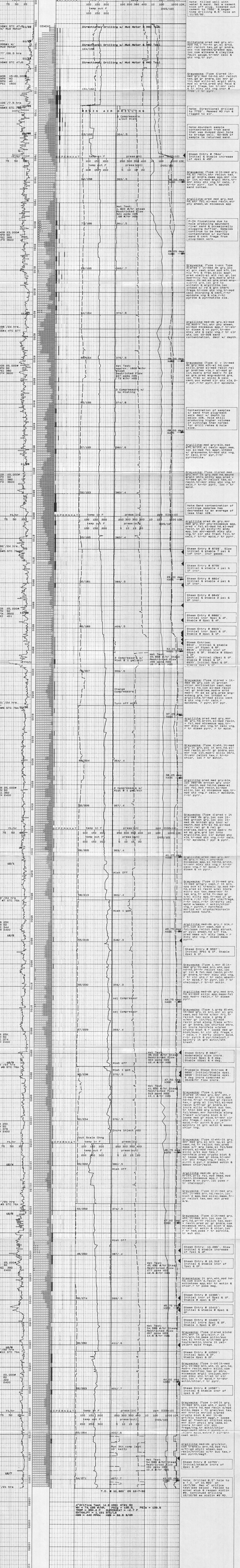
### REMARKS

8849' 26, 2'F 9847' 10.4, 4'F  
 8882' 26, 4'F 10395' 10.4, 1'F  
 8909' 26, 4'F 10410' 6.6, 2'F  
 8912' 21.6, 6'F 10422' 1.5, 2'F  
 8916' 22.8, 2'F 10500' 2.0, 0'F  
 8925' 10.6, 1'F 10587' 1.0, 1'F  
 8933' 0.8, 0'F 10753' 1.5, 0'F



## GEO THERMAL DATA LOG

Geothermal Energy Partners/GeothermEx AIDLIN #9 ST#1 Redr111  
 Scale 1 : 600



300' / 21.5 hrs  
 NB #10 STC 76A

4" Orifice Test (4.6 HRS) STE#1 RD  
 WH = 74.388 W/HR PHS = 128.5 PHS = 139.8  
 THER = 360.2 F SURVEY = 23.7 F  
 ENTHALPY = 1.485 BTU/LB  
 H2S = 440 PPM H2 = 32.4 3/HR

Note: Drilled 8.5" hole to a depth of 10,820' on 12/7/92. Then an orifice test (see below). Failed to enter steam & reopen AIDLIN #9. Continued drilling 12/12/92 as indicated on #9 SD.