

610131-2

BOREHOLE COMPENSATED SONIC LOG

Schlumberger

COMPANY UNION OIL COMPANY OF CALIFORNIA

WELL D. X. STATE 4586 NO. 19

FIELD GEYSERS

COUNTY SONOMA STATE CALIFORNIA

LOCATION 1 1/2 MILES S. 2700' NORTH FROM THE SOUTHWEST CORNER OF

81450 EAST 5. 2700' NORTH FROM THE SOUTHWEST CORNER OF

1150 EAST 5. 2700' NORTH FROM THE SOUTHWEST CORNER OF

1150 EAST 5. 2700' NORTH FROM THE SOUTHWEST CORNER OF

1150 EAST 5. 2700' NORTH FROM THE SOUTHWEST CORNER OF

1150 EAST 5. 2700' NORTH FROM THE SOUTHWEST CORNER OF

1150 EAST 5. 2700' NORTH FROM THE SOUTHWEST CORNER OF

1150 EAST 5. 2700' NORTH FROM THE SOUTHWEST CORNER OF

1150 EAST 5. 2700' NORTH FROM THE SOUTHWEST CORNER OF

1150 EAST 5. 2700' NORTH FROM THE SOUTHWEST CORNER OF

1150 EAST 5. 2700' NORTH FROM THE SOUTHWEST CORNER OF

1150 EAST 5. 2700' NORTH FROM THE SOUTHWEST CORNER OF

1150 EAST 5. 2700' NORTH FROM THE SOUTHWEST CORNER OF

1150 EAST 5. 2700' NORTH FROM THE SOUTHWEST CORNER OF

1150 EAST 5. 2700' NORTH FROM THE SOUTHWEST CORNER OF

1150 EAST 5. 2700' NORTH FROM THE SOUTHWEST CORNER OF

1150 EAST 5. 2700' NORTH FROM THE SOUTHWEST CORNER OF

1150 EAST 5. 2700' NORTH FROM THE SOUTHWEST CORNER OF

1150 EAST 5. 2700' NORTH FROM THE SOUTHWEST CORNER OF

1150 EAST 5. 2700' NORTH FROM THE SOUTHWEST CORNER OF

1150 EAST 5. 2700' NORTH FROM THE SOUTHWEST CORNER OF

1150 EAST 5. 2700' NORTH FROM THE SOUTHWEST CORNER OF

1150 EAST 5. 2700' NORTH FROM THE SOUTHWEST CORNER OF

SCALE CHANGES		
Type Log	Depth	Scale Up Hole
		Scale Down Hole

LOGGING DATA			
Porosity Selectors		Depth	
Δt _m	Δt _f	From	To

REMARKS
GR RECORDED 10' DEEP.
CALIPER SPRING ARM BROKEN.

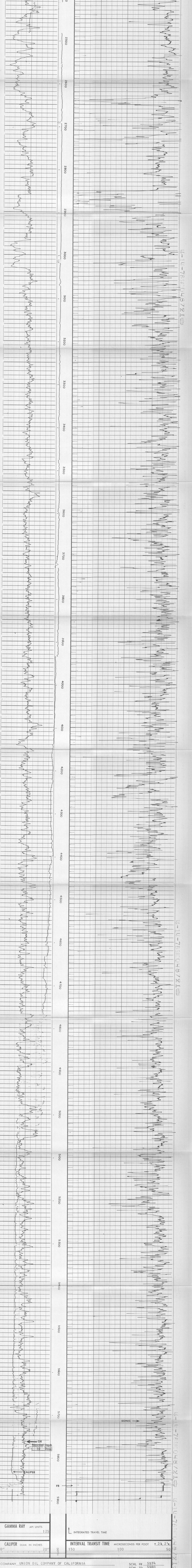
Velocity (ft/sec) = $\frac{1000.000}{\text{Interval Transit Time (microseconds per foot)}}$

Run No.	ONE
Service Order No.	48721
Fluid Level	FULL

EQUIPMENT DATA	
Sonic Panel No.	JH-388
Sonic Cart No.	FA-502
Sonic Sonda No.	QA1339
Mem. Panel No.	CA-524
G.R. Cart No.	JAA466
G.R. Panel No.	CA-524
Caliper No.	DA-290
TTR No.	
Centralizers No.	1
Centralizers Type	CHE-Z
Standoffs No.	2
Type	4 FIN RUBBER
Time Const.-Sec.	AUTO
Speed - F.P.M.	40

CALIBRATION DATA	
BK CFS	40
GR	300
Tc Sec	6

All interpretations are opinions based on inference from electrical or other measurements and we cannot, and do not guarantee the accuracy or correctness of any interpretation, and we shall not, except in the case of gross or willful negligence on our part, be liable or responsible for any loss, cost, damages or expenses incurred or sustained by anyone resulting from any interpretation made by any of our officers, agents or employees. These interpretations are also subject to Clause 4 of our General Terms and Conditions as set out in our current Price Schedule.



GAMMA RAY	API UNITS	0	125
CALIPER	DIAM. IN INCHES	10"	20"
INTERVAL TRANSIT TIME	MICROSECONDS PER FOOT	150	50

COMPANY	UNION OIL COMPANY OF CALIFORNIA	SCHL. FR.	5974
WELL	D. X. STATE 4586 NO. 19	SCHL. ID.	5980
FIELD	GEYSERS	DLR. TD.	5900
COUNTY	SONOMA	STATE	CALIFORNIA
		Elev.	N/A
		DB	N/A
		GL	N/A