

# DIRECTIONAL LOG

COMPILED

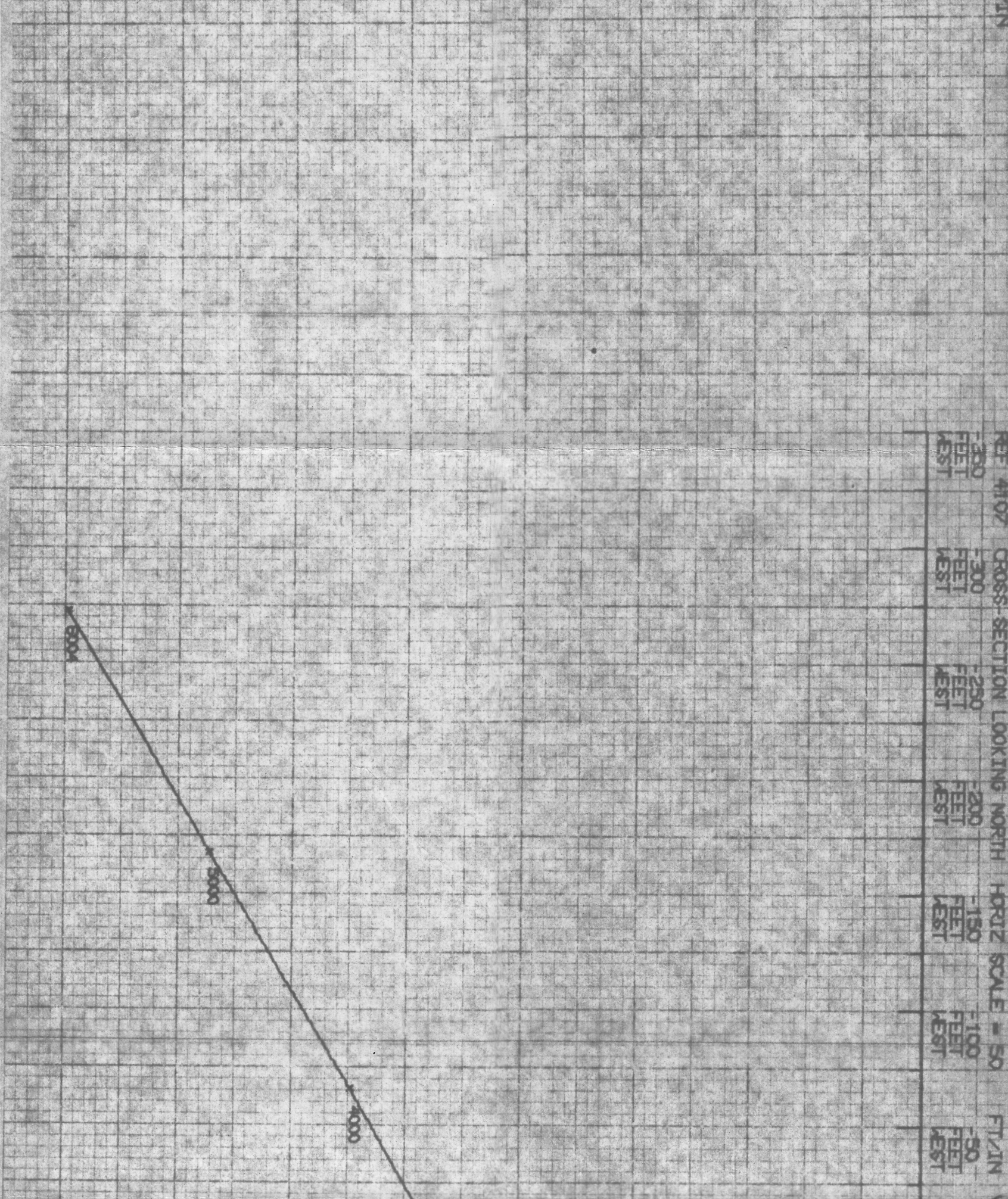
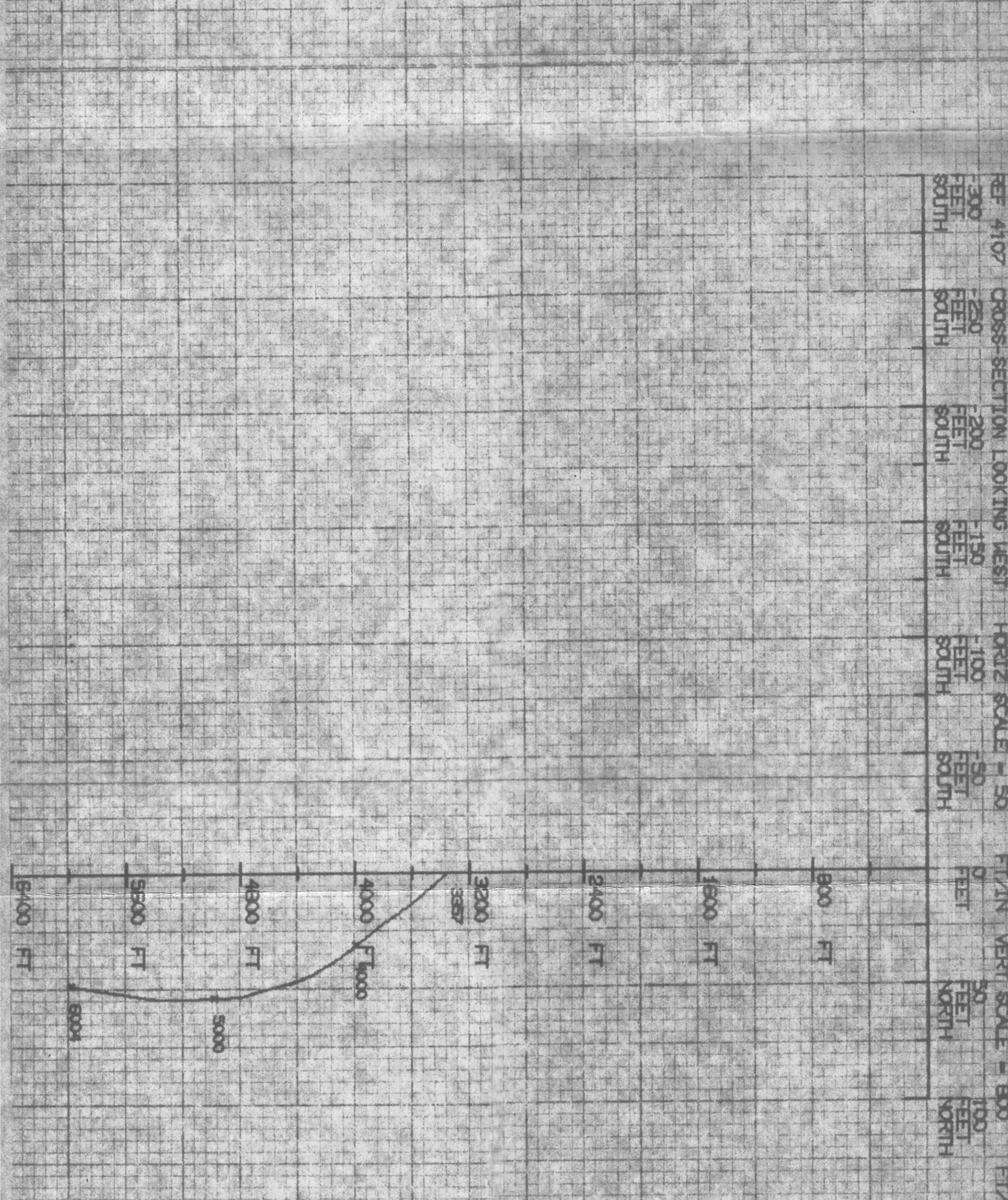
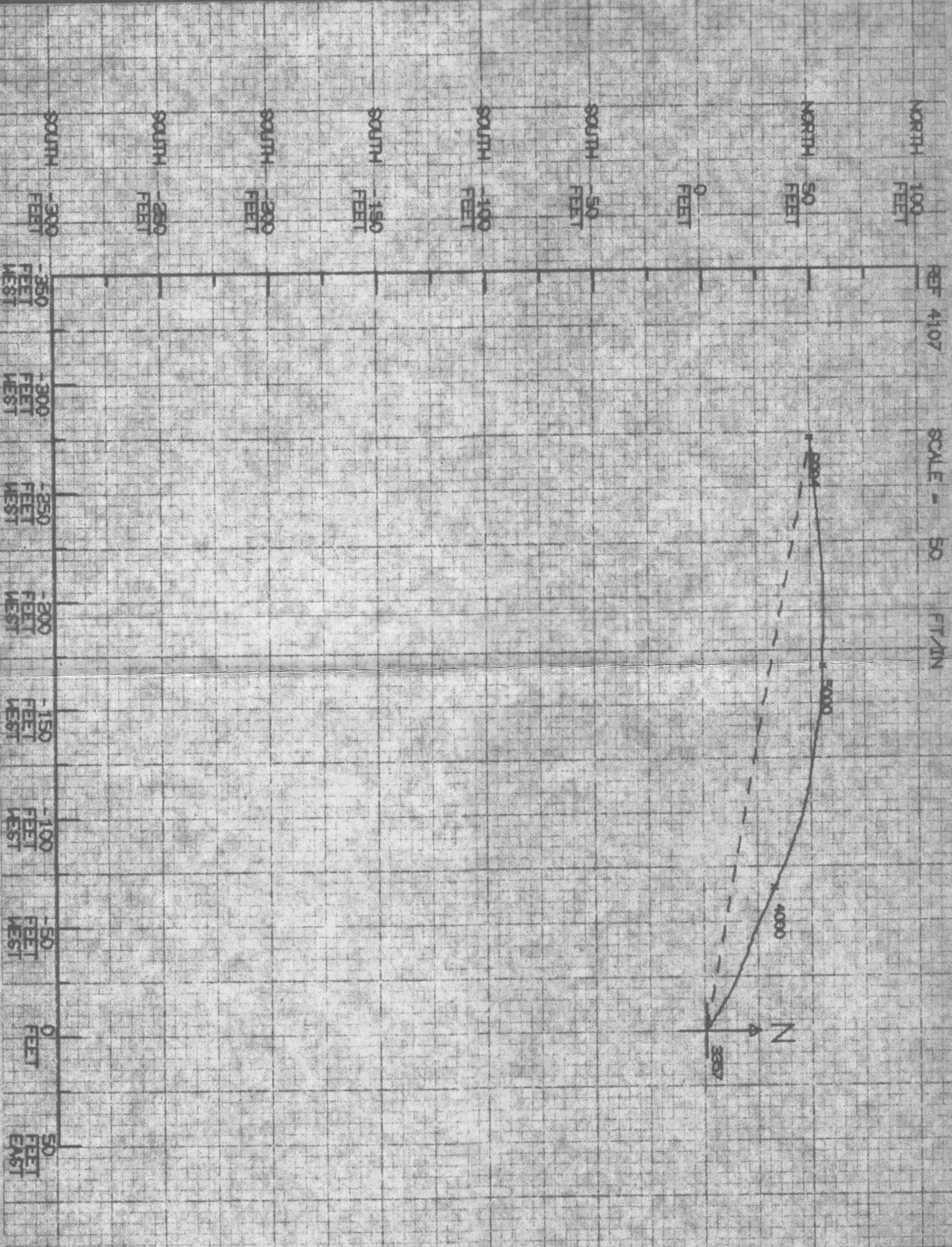
Schlumberger

COUNTY BEAVER  
 FIELD WILDCAT  
 LOCATION SE 1/4, NE 1/4, HW 1/4  
 WELL CFS 42-7  
 COMPANY UNION OIL COMPANY OF CALIFORNIA  
 COMPANY UNION OIL COMPANY OF CALIFORNIA  
 WELL CFS 42-7  
 FIELD WILDCAT  
 COUNTY BEAVER STATE UTAH  
 LOCATION SE 1/4, NE 1/4, HW 1/4  
 Sec 7 Twp. 26S Rge. 6W  
 Other Services  
 8HC 7P  
 FTO/CMI -JP

Perm. No. CI  
 Log Measured From KB Elev. 6422  
 Drilling Measured From KB Elev. 6422  
 Date 3-1-78  
 Run No. ONE  
 Depth-Driller 7705  
 Btm. Log-Logger 6003  
 Top Log Interval 6003  
 Depth Interval 100'  
 Depth Interval Due to Heat  
 Depth Interval between 300'  
 Casing-Driller 9-5/8" 357  
 Casing-Logger @  
 Bit Size 8-3/4  
 Flow Fluid in Hole FOLIATION WATER  
 Dens. ml  
 Visc. ml  
 Fluid Loss ml  
 Source of Sample ml  
 Amt. @ Meas. Temp. ml  
 Amt. @ BHT ml  
 Time Since Circ ml  
 Max. Rec. Temp. ml  
 Engine Location ml  
 Recorded by FAH/ENR/UC/EN/EA/T  
 Witnessed by KA/ONE

The well name, location and borehole reference data were furnished by the customer. Schlumberger and we cannot, and do not, guarantee the accuracy or correctness of any interpretations, and we shall not, except to the extent of error without negligence on our part, be liable or responsible for any loss, both, damages or expenses incurred or sustained by anyone resulting from any interpretation made by one of our officers, agents or employees. These interpretations are also subject to Clause 7 of our General Terms and Conditions as set out in our current Price Schedule.

REMARKS:



MEASURED DEPTH	TRUE VERTICAL DEPTH	DISTANCE NORTH	DISTANCE WEST
6004.0 FEET	5988.8 FEET	48.4 FEET	271.9 FEET

COMPANY	UNION OIL COMPANY OF CALIFORNIA	SCHL. FR	6003
WELL	CFS 42-7	SCHL. TD	6004
FIELD	WILDCAT	DRLR. TD	7705
COUNTY	BEAVER	STATE	UTAH
		Elev:	KB 6442
		DF	6422
		GL	6422