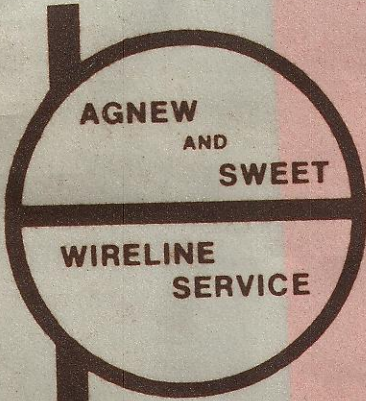


# AGNEW and SWEET

24 HOUR PHONE 805-327-2267  
3914 GILMORE AVENUE  
BAKERSFIELD, CALIFORNIA  
93308

GL04389-2



## SUBSURFACE SURVEY

OWNER CHEVRON RESOURCES COMPANY  
CASING: 13-3/8" @ 1006'  
LINER DESCRIPTION: 9-5/8" @ 2937', Top @ 794'  
PERFORATIONS:  
TUBING DETAIL:

FIELD BEOWAWE  
ELEV. 5,500'

WELL NAME 85 - 18  
DATE: April 21, 1980  
ZERO POINT D.F.  
MPP  
DEPTH 3260' T.D.ZONE

WELL STATUS Static  
SURVEYED TUB. ☐ ANN ☐ Casing (X)  
PICK UP @ none made  
ELEMENT RANGE \*80-624, 127-686  
PURPOSE STATIC TEMPERATURE TRAVERSE SURVEY  
REMARKS: Traverse @ 20' per minute from 1500' to 2935'.

PUMP SHOE  
SHUT IN  
ENGAGE STYLUS 6:30 pm  
TIME ON BOTTOM 8:07 pm  
SERIAL NO. \*10287, 10030

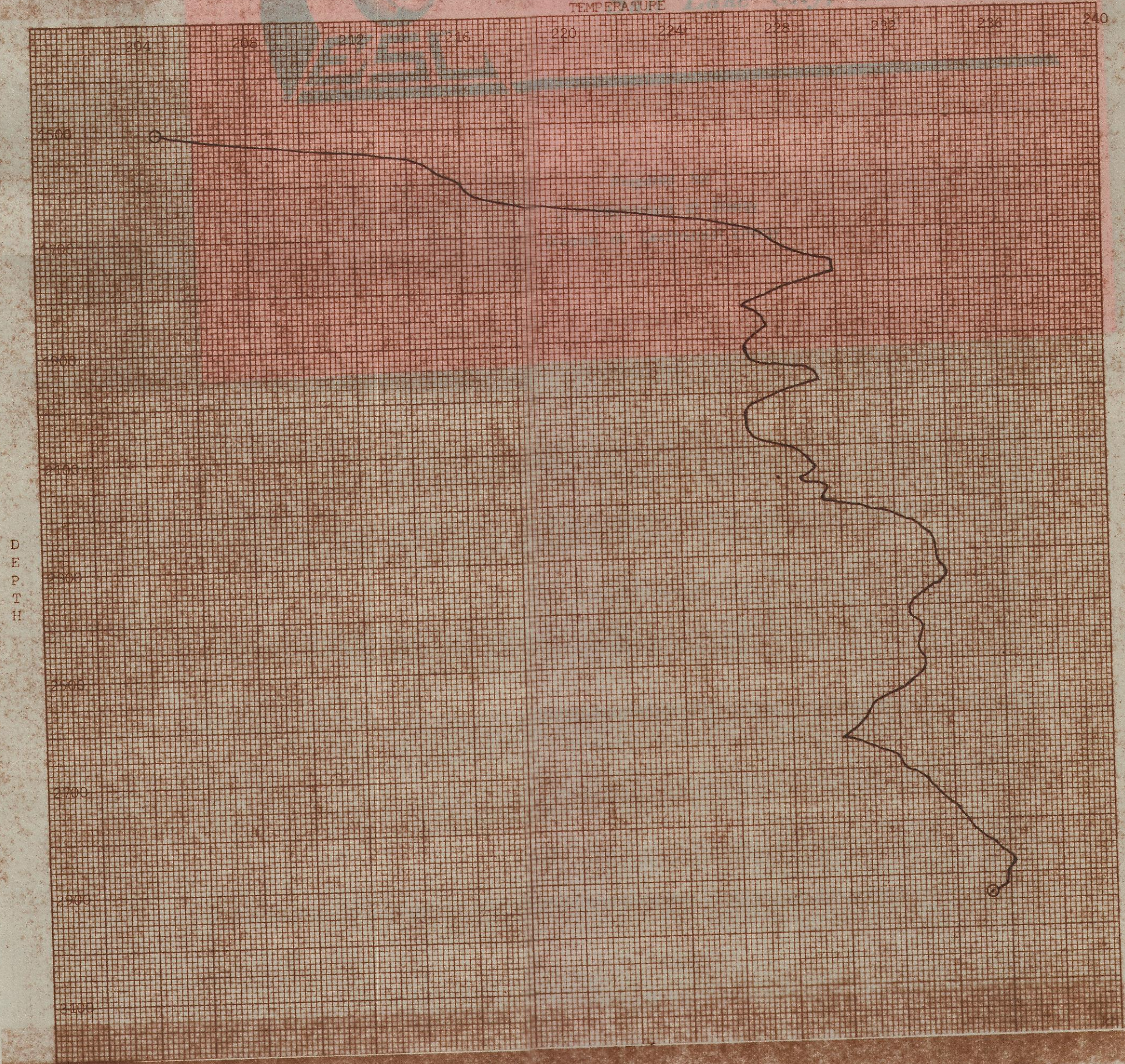
ON PRODUCTION  
DISENGAGE STYLUS 8:37 pm  
TIME OFF BOTTOM 8:17 pm  
CLOCK 3 hr. TURN 15  
MAX. °F 236.2 @ 2880'

Max. Rec. Thermometer - 235°

RUN #3

STABILIZATION PERIOD		
PRESSURES:	START	FINISH
DATE		
CASING PSI OBS		
CASING PSI COR		
TUBING PSI OBS		
TUBING PSI COR		
PRESS STATUS		
INSTRUMENT HUNG @		

EARTH SCIENCE LABORATORY  
University of Utah Research Institute  
Salt Lake City, Utah  
BY: SUNDBERG /kh



DEPTH	TEMP.	DEPTH	TEMP.	DEPTH	TEMP.	DEPTH	TEMP.
1500	204.6	1860	227.1	2220	231.0	2580	231.0
1520	206.6	1880	227.4	2240	232.8	2600	230.8
1540	211.4	1900	226.8	2260	233.3	2620	230.5
1560	214.3	1920	226.5	2280	233.6	2640	229.9
1580	215.1	1940	226.8	2300	233.6	2660	231.0
1600	216.0	1960	229.1	2320	233.6	2680	231.9
1620	216.3	1980	229.3	2340	233.9	2700	232.2
1640	218.2	2000	227.9	2360	233.6	2720	233.0
1660	221.1	2020	226.8	2380	233.0	2740	233.3
1680	224.8	2040	226.5	2400	232.5	2760	233.6
1700	226.8	2060	226.5	2420	232.5	2780	234.2
1720	227.6	2080	226.8	2440	233.0	2800	234.5
1740	228.2	2100	228.2	2460	232.8	2820	234.7
1760	229.9	2120	228.8	2480	232.8	2840	235.3
1780	229.9	2140	229.1	2500	233.0	2860	235.9
1800	228.5	2160	228.5	2520	233.0	2880	236.2
1820	227.4	2180	229.6	2540	232.5	2900	235.9
1840	226.5	2200	229.3	2560	231.9	2920	235.9
						2935	235.3