

Schlumberger
BOREHOLE COMPENSATED SONIC LOG

COMPANY: CHEVRON USA INC.
WELL: BEOWAVE NO. 85-18
FIELD: BEOWAVE GEYSERS
COUNTY: LANDER STATE: NEVADA
LOG MEASURED FROM: KL 15 ft Above From Datum
LOG MEASURED TO: KL 5620
DATE: 10/09/59
LOG MEASURED FROM: KL 5620
LOG MEASURED TO: KL 5620

Run No.	ONE	TWO	THREE
Service Order No.	122012	122004	122000
Fluid Level	FULL	FULL	FULL

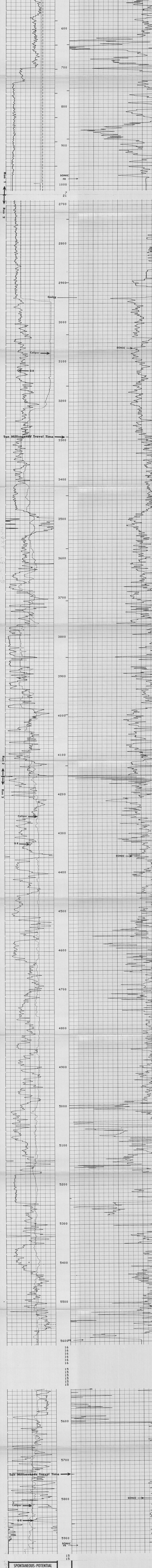
EQUIPMENT DATA	
Sonic Panel No.	0A-383
Sonic Cart No.	380
Sonic Sonda No.	1239
W.M. Panel No.	2087
G.R. Cart No.	443
G.R. Panel No.	290
TR No.	---
Centrifizers: No.	ONE
Type	CME-2
Standoffs: No.	ONE
Type	4FTN
Time Const. Sec.	2
Speed - F.P.M.	30

CALIBRATION DATA	
IMC CFS	29
Source CPS	194
Tc Sec	11.26
	12.26
	17.26
	18.26

LOGGING DATA	
Parosity Selectors	---
From	100
To	5915

REMARKS: RUN 1 - START TIME DOWN LOG TIME OUT OF HOLE 0200. RUN-2 BHT=250-250-250. RUN-3-CALIPER DOESN'T CALIBRATE PROPERLY-NOT READING CORRECTLY. OVERLAP 3500' DUE TO CYCLE SKIPS.

Run 1	100	200
Run 2	2700	3300
Run 3	4200	5600



SPONTANEOUS-POTENTIAL	MILLIVOLTS
GAMMA RAY	API UNITS
CALIPER	DIAM. IN INCHES

COMPANY: CHEVRON USA INC.
WELL: BEOWAVE NO. 85-18
FIELD: BEOWAVE GEYSERS
COUNTY: LANDER STATE: NEVADA

SCHL FR: 3315
SCHL TD: 3330
DLR TD: 3927
Elev: KB: 4935
DF: 4920
GL: 4920