

**Schumberger**  
**COMPENSATED NEUTRON-FORMATION DENSITY**

COMPANY: CHEVRON USA, INC.  
 WELL: BEOWAVE NO. 85-18  
 FIELD: BEOWAVE GEYSERS  
 COUNTY: LANDER STATE: NEVADA  
 LOCATION: 6.801 SOUTH 6.801 WEST FROM THE CORNER SOUTHWEST 1/4 OF SECTION 36 T18N R18E  
 DATE: 5-11-80  
 TIME: 10:00  
 LOG MEASURED FROM: 15.5 FT. ABOVE PERM. DEPTH  
 DRILLING MEASURED FROM: 0 FT. (4920)  
 PERMITS: 4920, 4935, 4927, 4926

THE WELL NAME, LOCATION AND BOREHOLE REFERENCE DATA WERE FURNISHED BY THE CUSTOMER.

|                   |        |        |          |    |       |      |       |       |
|-------------------|--------|--------|----------|----|-------|------|-------|-------|
| RUN NO.           | ONE    | TWO    | Type Log | GR | Depth | 4100 | 0-200 | 0-150 |
| Service Order No. | 123994 | 123980 | GR       |    |       |      |       |       |
| Fluid Level       | FULL   | FULL   |          |    |       |      |       |       |
| Solinity, PPM CL  | 30     | 30     |          |    |       |      |       |       |
| Speed, F.P.M.     | 30     | 30     |          |    |       |      |       |       |

|                       |                |
|-----------------------|----------------|
| <b>EQUIPMENT DATA</b> |                |
| Dens. Panel           | CSU 456        |
| Dens. Cart            | 213 213        |
| Dens. Skid            | 253 300        |
| Dens. Sande           | E-426 472      |
| Dens. Source          | 5139 5146      |
| Dens. Calibrator      | 1241 1105      |
| Neut. Panel           | CSU 456        |
| Neut. Cart            | 1208 1420      |
| Neut. Source          | 508 1146       |
| Neut. Calibrator      | 1192 466       |
| GR Cart               | CSU            |
| Memorizer Panel       | CSU            |
| Tape Recorder (TR)    |                |
| Depth Encoder (DRE)   |                |
| Pressure Wheel (PW)   |                |
| Centrifizers          | Type ECC S.O.  |
| Enter Spring          | No. --         |
| Standoffs             | Inches S.O. -- |
| In-line, or None      |                |

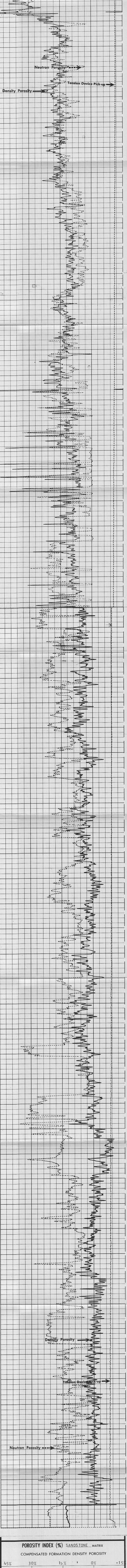
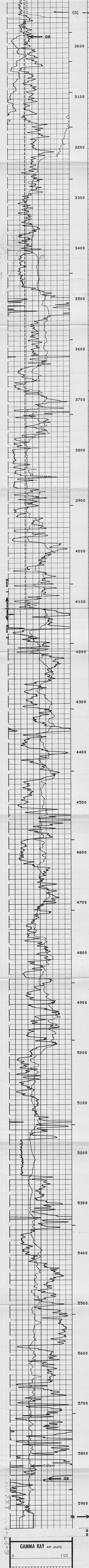
|                            |             |
|----------------------------|-------------|
| <b>CALIBRATION DATA</b>    |             |
| BKG. CTS                   | 59          |
| Source CPS                 | 214         |
| Sens. Cal                  | REG 165     |
| T.C. Cal                   | CSU         |
| Short Spacing - Before Log | RATIO= 2584 |
| Long Spacing - Before Log  | 1136        |
| Short Spacing - After Log  | RATIO= 2586 |
| Long Spacing - After Log   | 1199        |
| P1 - Before Log            | 464 723     |
| P1 - After Log             | 849 430     |
| P2 - Before Log            | 462 722     |
| P2 - After Log             | 815 452     |

|                     |        |                |                                 |
|---------------------|--------|----------------|---------------------------------|
| <b>LOGGING DATA</b> |        |                |                                 |
| DEPTH               | CNP    | FDC            | GR                              |
| Top                 | Bottom | Porosity Scale | Auto Corr. or Hole Size Setting |
| 2900                | 4520   | 45 -15         | AUTO                            |
| 4100                | 5300   | 45 -15         | CSU                             |

All interpretations are opinions based on inferences from electrical or other measurements and we cannot and do not guarantee the accuracy or correctness of any interpretations, and we shall not accept in the case of gas or water migration on our part, be liable or responsible for any loss, cost, damages or expenses incurred or sustained by anyone resulting from any interpretation made by any of our officers, agents or employees. These interpretations are also subject to Clause 4 of our General Terms and Conditions as set out in our current Price Schedule.

|                  |                 |
|------------------|-----------------|
| <b>CALIPER</b>   | DIAM. IN INCHES |
| 6"               | 16"             |
| <b>GAMMA RAY</b> | API UNITS       |
| 0                | 200             |

|  |             |
|--|-------------|
| <b>POROSITY INDEX % SANDSTONE - MATRIX</b> |             |
| COMPENSATED FORMATION DENSITY POROSITY     |             |
| 45   | 30 15 0 -15 |
| COMPENSATED NEUTRON POROSITY               |             |
| 45   | 30 15 0 -15 |



|                  |                 |
|------------------|-----------------|
| <b>GAMMA RAY</b> | API UNITS       |
| 0                | 150             |
| <b>CALIPER</b>   | DIAM. IN INCHES |
| 6"               | 16"             |

|  |                 |
|--|-----------------|
| <b>POROSITY INDEX (%) SANDSTONE - MATRIX</b> |                 |
| COMPENSATED FORMATION DENSITY POROSITY       |                 |
| 45%  | 30% 15% 0% -15% |
| COMPENSATED NEUTRON POROSITY                 |                 |
| 45%  | 30% 15% 0% -15% |

COMPANY: CHEVRON U.S.A., INC. SCHL FR: 5926  
 WELL: BEOWAVE NO. 85-18 SCHL TD: 5927  
 FIELD: BEOWAVE GEYSERS DRLR TD: 5927  
 COUNTY: LANDER STATE: NEVADA Elev: KB: 4935  
 DF: --  
 GL: 4920